



N. E. Weekly Shell Egg Report

Tuesday, Apr. 19
Report supplied by USDA
Prices paid per dozen Grade "A" Brown eggs in cartons delivered to retail stores:

	Ex. Large	Large	Medium	Small
MASS.X	87-89	87-89	73-75	56-58
Mostly	87	87	73	56
N. HAMP.	75-79	72-76	58-62	48-52
Mostly	79	74	60	50
R.I.	75-83	74-81	59-66	50-56
Mostly	75-78	74-76	59-62	50-54
VERMONT	89-98	85-95	70-79	-
Mostly	92	90	77	-
MAINE	84-85	81-83	67-68	57-59

X Includes Central and Western Sections only.

Nest Run Eggs

Prices are from Egg Clearinghouse, Inc., (ECI) Durham, N.H. and reflect trading prices for gradable nest run eggs (GNR) on ECI, a nationwide trading center for producers, packers and marketers. GNR eggs are classified by weight in 30-dozen cases, and traded in lots of either 30 or 750 cases. Prices are FOB buyers dock, and are computed Tuesday and Thursday of each week. This week's prices for each classification were:

Classification	Per Case	Tuesday	Thursday
Class 1 - Large	48 lbs.	49½	51
Class 2 - Large	45 lbs.	46	49
Class 3 - Medium	42 lbs.	45	47
Class 4 - Small	39 lbs.	41	41
Breaking Stock	48 lbs.	43	44
Checks	48 lbs.	38½	39½

Eastern Pa. & N.J. Poultry

Thursday, April 21
Report supplied by USDA
MARKET COMMENT: Prices unchanged. Processing plants are running full this week and bookings for next week are coming in quite satisfactorily. Offerings of live are at least adequate. Canner pack movement is only fair.
Prices Paid at Farm: Light Type Hens: 6-7½, mostly 7.
F.O.B. Plant: 9-9½.

New York Multiple Drop Broiler Report

Thursday, April 21
Report supplied by USDA
Current broiler/fryer negotiated prices for immediate delivery includes mostly multiple-drop shipments to New York City from Delmarva.
RANGE: U.S. Grade A 43-45; 1275 boxes. Premium (X) U.S. Grade A 44-46; 15125 boxes.
WTD. AVG.: U.S. Grade A 44.14; Premium (X) 45.75.

Heinsey's Poultry Market

Root's, East Petersburg
Tuesday, April 19
Report supplied by auction
MUSCOVY DUCKS, DRAKES: range 1.32-1.52 per lb.
MUSCOVY DUCKS, HENS: range 1.22-1.50 per lb.
PEKIN DUCKS: range .70-.96 per lb.
PULLETS: 6-9 lbs. range .36-.50 per lb.
RED FOWL: 4-5 lbs. range .20-.32 per lb.
RED FOWL: 5-6 lbs. range .26-.52 per lb.
CROSSBRED FOWL: 5-9 lbs. range .25-.38 per lb.
CROSSBRED ROOSTERS: 4-6 lbs. range .40-.82 per lb.
CROSSBRED ROOSTERS: 7-12 lbs. range .22-.62 per lb.
GUINEA FOWL: range 1.07-1.22 per lb.
BANTY ROOSTERS: range 2.00-3.85 ea.
BANTY HENS: range .75-1.50 ea.
GEESE: 7-12 lbs. range .40-.62 per lb.
LEGHORN HENS: range .06-.15 per lb.
BROILERS: 4-6 lbs. range .32-.56 per lb.
PIGEONS: range 1.30-1.50 ea.
WHITE PIGEONS: range 2.50-3.25 ea.
RABBITS: 4-6 lbs. range .80-1.04 per lb.
RABBITS: 7-11 lbs. range .66-.84 per lb.
BUNNIES: range 1.00-3.50 per lb.
GUINEA PIGS: range .50-2.75 ea.
GOATS: range 22.00-51.00 ea.
KID GOATS: range 20.00-42.00
TOTAL AMOUNT COOPS: 921.

Weekly New York Egg Market

	From Friday, Apr. 15 to Apr. 22				
	Fri.	Mon.	Tues.	Wed.	Thurs.
WHITE/					
Jumbo	75	75	75	75	75
Ex Large	71	71	71	71	71
Large	67	67	67	67	67
Mediums	63	63	63	63	63
Pullets	53	53	53	53	53
BROWN					
Jumbo	-	-	-	-	-
Ex Large	83	83	83	83	83
Large	78	78	78	78	78
Mediums	63	63	64	64	65
Pullets				54	
Peewees					55
Off Grade					
Checks	34	34	35	36	37

Breaking Stock: Friday 11.40-12.00, Monday & Tuesday 12.60-13.20, Wednesday 12.90-13.50, Thursday 13.20-13.60.

Philadelphia Eggs

Thursday, April 21
Report supplied by USDA
MARKET COMMENT: Prices lower compared to a week ago. Most dealers have a few small retail features running and note fairly good orders, but regular business is light. So the combination of the two results is no better than fair movement overall. Extra large are in balance to occasionally fully adequate. Large, are ample for needs with surplus stocks noted in most quarters. The excess large are difficult to move, especially at normal relationships. Mediums are slightly more available, but are no more than adequate overall. Small remain tight and while the inquiry is still unfilled, it is not as widespread as before.
Prices to retailers: Sales to volume buyers, consumer grades white eggs in cartons delivered store door:
A Extra Large 65-72; A Large 64-67; A Medium 59-61½.

Delmarva Poultry

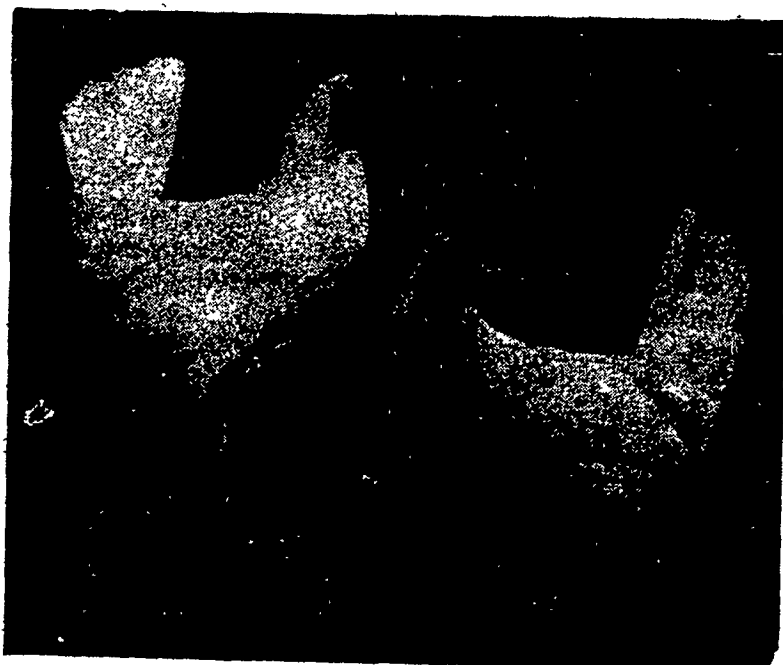
Thursday, April 21
Report supplied by USDA
MARKET COMMENT: Ready to cook movement has improved in most quarters and is noted as fair to occasionally good. Parts are strong as current production is readily clearing under an active call. While the discounting of heavy weight production has stopped, there are still some plants which carry product today. The overall slaughter is moderately heavy. Live supplies are fully adequate to ample. Weights are desirable to occasionally heavier than desired. Undertone is firm.
Today's L.T.L. asking prices are unchanged on U.S. Grade A at 43-46 cents.
Estimated slaughter of broiler fryers in Delmarva (000).
Estimated April 22 1886; Actual April 14 1822; Actual April 19 1682; Average Weights April 19 4.32, April 4.31.

Beat
the
Heat
with
Eggs



Two Ways To Improve
Your Profit Picture
XL & DK

Two layers with distinctly different characteristics... From two separate research programs.
You don't have to buy from two different companies to get the two top layers on the market.
The XL shows excellent production under many management conditions. The DK responds best to finely tuned, close management.
DEKALB Layers are bred to possess the economic traits most applicable to your operation. You do have a choice... The high productivity XL or the high efficiency DK.



Mayer's CHICKS, INC.

DEKALB
BROWN & WHITE
EGG LAYERS

Quakertown, PA 18951
(215) 536-3155

HUBBARD
WHITE MT.
BROILERS

Copyright 1983 by Lancaster Farming
P.O. Box 366 - Lititz, PA 17543
Office: 22 E. Main St., Lititz, PA 17543
Record-Express Office Building
Phone: Lancaster 717-394-3047
or Lititz 717-626-1164

Robert G. Campbell, Publisher
Dick Anglestein, Editor
Debra L. Koontz, Home Editor
Trish Williams, Staff Writer
Sylvia Cooper, Staff Writer

NEWS CORRESPONDENTS

Donna M. Tommelleo, Adams County
Littletown 717-632-1731

Patty Gross, Bedford, Blair, Huntingdon counties
Martinsburg 814-793-4256

Robin Phillips, Berks County
Mohrsville 215-926-1261

Jane Bresee, Bradford County
Ulster 717-358-3346

Beth Hemminger, Cumberland, Franklin
and Perry counties
Newville 717-486-5322

Sally B. Bair, Lancaster County
Columbia

Joyce Bupp, York County
Seven Valleys

Subscription Price:
\$7.50 per year; \$13.00 - 2 years
\$14.00 per year outside of
PA, NJ, MD, DE, NY, VA & WV

Established November 4, 1955
Published every Saturday
by Lancaster Farming, Lititz, PA
Second Class Postage paid at
22 E. Main St.
Lititz, PA 17543 ISSN0023-7485

For address change form or new
subscription see Mailbox Markets.

Members of Newspaper Farm Editors Assn.,
Pa. Newspaper Publishers Association,
and National Newspaper Association.



ATTENTION FARMERS

EVERY MONDAY
HATFIELD PACKING CO. and
BAUMS MEAT PACKING
Will Receive Your
Hogs and Cattle at the
DANVILLE LIVESTOCK MARKET
RD4, Danville, PA

- We will receive your hogs from 8 AM to 12 Noon every Monday. Your hogs will be weighed and paid for immediately.
 - We will also accept your sows & boars.
 - Your cattle will be received from 12 Noon to 4 PM. We will either pay for your cattle immediately or you may sell them dressed weight.
 - There will not be a commission or yardage fee deducted from your check.
 - You may call our office Monday morning and we will be able to tell you the base price for hogs for the day.
 - Please come and give us a chance to continue doing business with you through this method
- FOR INFORMATION CALL
717-275-2880