

# Livestock market and auction news

## Carlisle Auction

Carlisle, Pa.

Tuesday, April 19

Report supplied by auction

**CATTLE:** Steers were 1.00 lower; Heifers were 2.00 higher; Cows were 2.00 lower and Bulls were 1.00 higher. Steers-Good 59.00-61.75; Standard 51.00-58.75; Utility 50.00 down. Heifers-Good 56.00-58.00; Standard 52.00-56.00; Utility 51.50 down. Cows- Earlybird pen 2.00 higher; Utility & Commercial 44.75-46.85; Cutter 40.35-45.00; Canner & Low Cutter 37.50-42.75; Shells 37.00 down. Bulls- Yield Grade #1 50.75-54.75; Yield Grade #2 48.75-49.75.

**FEEDER CATTLE:** Steers were steady, Heifers were 1.00 higher and Bulls were 2.00 lower. Steers-Good 370-595 lbs. 62.00-70.00; Medium 400-455 lbs. 59.00-61.00; Good 490-550 lbs. 62.00-66.00; Medium 485-525 lbs. 50.00-58.00; Utility 595-715 lbs. 47.00-48.00. Heifers- Choice 170-235 lbs. 66.00-

78.00; Medium 410-530 lbs. 52.00-55.00; Utility 675-760 lbs. 43.00-46.00. Bulls- Choice 235-380 lbs. 70.00-86.00; Medium 365-565 lbs. 50.50-54.00; Good 475 lbs. 60.00-Medium 505-675 lbs. 49.00-54.00.

**CALVES:** Vealers were steady; Back to the farm calves were 1.00 lower for Hol. Bulls and 14.00 higher for Hol. Heifers. Vealers-Choice 80.00-95.00; Good 65.00-80.00; Standard 55.00-70.00; Standard & Light 55.00 down. Farm Calves- Hol. Bulls 89.00-95.00; Hol. Heifers 90.00-113.00.

**HOGS:** Steady prices; US No. 1 & 2 46.00-48.60; US No. 1 & 3 42.25-46.00; US No. 2 & 3's 40.50-42.00. Sows- 3.00 lower. US 1 & 2 42.00-45.50; No. 2 & 3 39.50-42.00.

**FEEDER PIGS:** Steady to 1.00 lower; US No. 1-3 22-30 lbs. 28.00-30.00 head; No. 1-3 37-45 lbs. 37.00-47.00 head; No. 2-3 55 lbs. 47 head.

**SHEEP:** Lambs- Choice 83.00-95.00; Medium 59.00. Goats- 27.00-50.00.

## Bellefonte Auction

Bellefonte, Pa.

Wednesday, April 20

Report supplied by PDA

**CATTLE 113:** Compared with last Wednesday's market, slaughter cows steady to 1.00 higher. Few Standard slaughter steers 50.50-57.35. One Good slaughter heifer at 56.85, one Standard at 52.75. Utility & Commercial slaughter cows 40.00-44.85, couple 45.85, Cutters 39.50-43.00, Canner & Low Cutter 36.00-40.00, Shells down to 33.50. One Yield Grade #1 1390 lbs. slaughter bull at 52.85.

**CALVES 138:** Few Choice vealers 84.00-99.00, few Good 70.00-76.00, Standard & Good 70-100 lbs. 52.00-61.00, few Utility 50-80 lbs. 40.00-45.00. Farm calves, holstein bulls 90-130 lbs. 61.00-111.00, mostly 80.00-108.00; holstein heifers 90-130 lbs. 71.00-100.00.

**HOGS 163:** Barrows & gilts .75

higher. US No. 1-2 210-240 lbs. barrows & gilts 48.75-49.85, few lots No. 1-3 240-255 lbs. 47.25-47.75, few lots No. 2-3 250-280 lbs. 44.00-45.25. US No. 1-3 350-575 lbs. sows 40.00-44.25. Boars 32.00-42.50.

**FEEDER PIGS 174:** US No. 1-3 20-35 lbs. feeder pigs 23.50-35.00 per head, No. 1-3 40-60 lbs. 40.00-49.50, one lot No. 1-3 75 lbs. 53.00 per head.

**SHEEP 17:** Few Choice 55-75 lbs. spring slaughter lambs 78.00-88.00. Slaughter ewes 14.50-24.00.

**GOATS 21:** Large Goats 27.00-102.50, few kids 10.00-21.00 per head.

**HOLSTIEN DAIRY COWS** 700.00-1100.00, one 1210.00 per head.

& Large #2 440-765 lbs. 37.50-45.00. Few Medium & Large Frame #1 360-500 lbs. feeder bulls 55.50-64.00, Medium & Large #2 400-600 lbs. 40.00-52.50.

**CALVES 76:** Vealers mostly steady. Few Choice vealers 85.00-100.00, Couple Prime 100.00 & 104.00, few Good 75.00-85.00, few Standard 62.00-70.00, Standard & Good 85-110 lbs. 58.00-63.00, 60-85 lbs. (few) 49.00-55.00. Farm Calves: Holstein Bulls 95-130 lbs. 65.00-85.00; Beef cross bulls and heifers 70-125 lbs. 60.00-97.50.

**HOGS 219:** Barrows and gilts mostly 1.00 higher. US No. 1-2 220-240 lbs. barrows and gilts 48.85-49.25, couple lots 51.00 & 52.00, No. 1-3 200-250 lbs. 47.80-49.00, No. 2-3 220-270 lbs. 43.50-48.00, few No. 1-3 170-190 lbs. 46.00-47.50. Sows about steady. US No. 1-3 260-535 lbs. sows 42.50-51.50.

**FEEDER PIGS 24:** US No. 1-3 35-40 lbs. feeder pigs 35.00-42.00 per head.

**SHEEP 13:** One Lot Choice 106 lbs. spring slaughter lambs at 68.00, one lot Good 80 lbs. woolled lambs at 40.00. Few Slaughter ewes 14.50-16.00.

## Belknap Auction

Dayton, PA

Wednesday, April 20

Report supplied by PDA

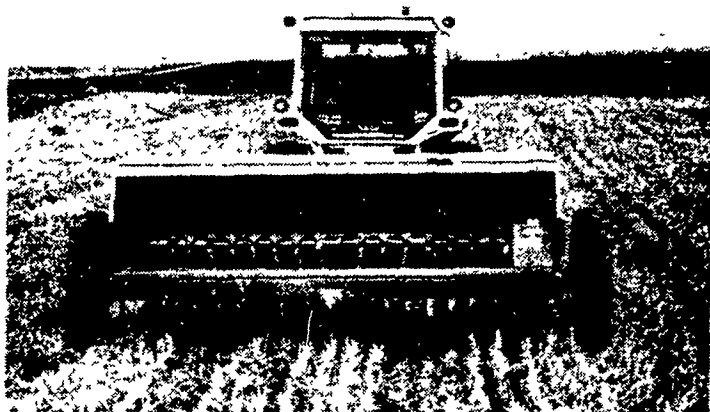
**CATTLE 133:** Compared with last Wednesday's market, slaughter cows 1.50-2.00 lower. Choice slaughter steers 63.00-65.00, one 67.00, few Good 62.00-62.75, few Standard 50.00-52.00, few Utility 44.00-48.50. Individual Good slaughter heifer at 55.00, few Standard 45.00-48.00. Utility & Commercial slaughter cows 42.00-45.25, one 46.75, Commercial 4-5 38.00-42.00, Cutters 38.50-42.00, Canner & Low Cutters 32.00-38.50. Few Yield Grade #1 1145-1845 lbs. slaughter bulls 50.00-58.50, few #2 910-1215 lbs. 45.25-50.00. Few Medium Frame #1 735-825 lbs. feeder steers 52.00-53.75. Medium & Large Frame #1 450-740 lbs. feeder heifers 45.00-53.50, Medium



**BREAKING MILK RECORDS!**  
Lancaster Farming Carries  
DHIA Reports Each Month!

PENNSYLVANIA  
MARKETS

## Lilliston 9680 NO-TILL GRAIN DRILL

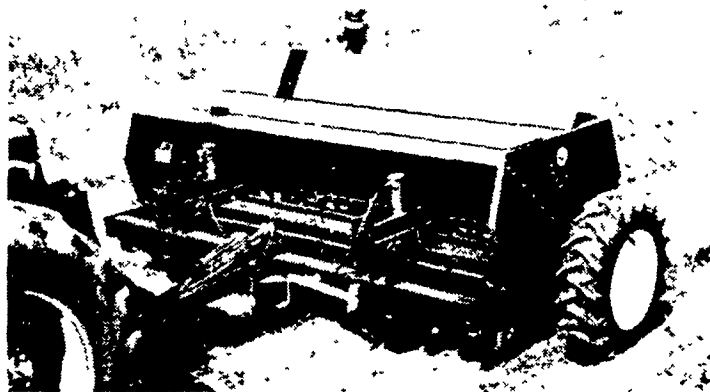


### For Heavy Stubble and Hard Soils

The new Lilliston 9680 No-Till Grain Drill will operate in maximum severe conditions, where uniform penetration of heavy stubble and hard soils is required. Unlike some of the so-called "no-till" drills available today, which are actually conventional drills with front coulters added, the Lilliston is designed, from the ground up, for one purpose: No-till seeding.

### Some Special Features

- Maximum empty weight of 7,160 lbs. transfers 390 lbs. of down pressure to each of the 18 openers on 7 inch spacings.
- Heavy duty 14 inch cutting coulters and double disc openers, spring-loaded scrapers and center rib gauge wheels.
- Three hydraulic cylinders regulate pressure on openers for precision depth control.
- Patented double-chambered feed cups which maintain even seed flow to the feed wheels.
- Cluster gear boxes for easy selection of 27 application speeds of seed and fertilizer.



SEE THE NEW LILLISTON 9680 NOW AT:

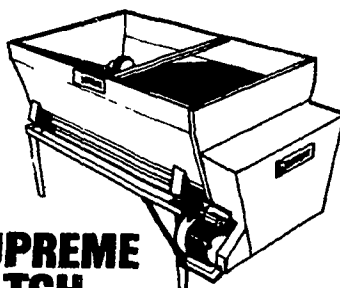
# KELLER BROS.

1921 TRACTOR CO. 1983  
717-949-6501

Rt. 419 Between Schaefferstown & Cornwall, Lebanon County

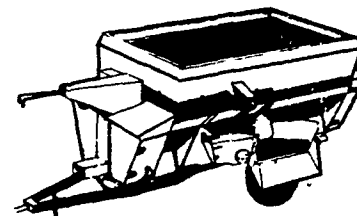
## FEEDING FOR MORE PROFIT

A total mixed ration (TMR) can help increase milk production—and profits—without adding a single cow to your herd. Agway can help you put a TMR to work on your farm with system components like these.



### SUPREME BATCH MIXER AND WEIGHER

- accurately meters and mixes feed and supplements
- ideal for freestall or stanchion operations
- 60 bu cap



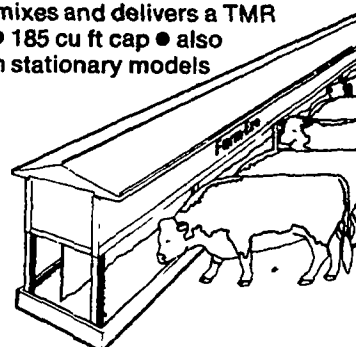
### SCHWARTZ FEEDER WAGON Model 780

- weighs, mixes and delivers a TMR to bunks
- 185 cu ft cap
- also available in stationary models

**NO NEED TO BUY, LEASE IT!**  
No big initial investment when you lease through Telmark Agri-Lease Check Agway for details.  
Agri-Lease TELMARK  
INSTALLED AND SERVICED BY AGWAY  
All Agway Installation and Service people are well trained, well equipped, and backed by complete parts inventories for fast repairs.

### FARM-EZE BUNK FEEDER SYSTEM

- safe, efficient and simple to operate
- conveyor belt moves and distributes a TMR to the bunk



FOR DETAILS, CONTACT YOUR AGWAY FARM SYSTEMS SALESPERSON OR FARM MECHANICAL POINT.

Oxford 215/932-9361	Eighty Four 412/222-0600	Winfield 717/523-1204	Temple 215/929-5264	Lebanon 717/273-2621	Lancaster 717/394-0541
Blairsville 412/459-7830	Somerset 814/445-4184	Pleasant Gap 814/359-2722	Dublin 215/249-3556	Carlisle 717/243-4312	Butler 412/482-2195
Wysox 717/265-9131	New Milford 717/465-3139	Chapman 215/395-3381	York 717/792-2674	Chambersburg 717/263-4197	

# AGWAY

answers your needs

