

Livestock market and auction news



Virginia Auction Summary

April 7-13
 Report supplied by VDA
 Total of Va. Weekly Feeder Cattle Auction Receipts: 8843.
TREND: Steady.

Southwest, Va. Auction Summary
April 7-13
STEERS: 300-500 lbs. Medium 1 64.50-70.75; Large 1 85.00-77.00; Small 1 61.00-73.00. 500-700 lbs. Medium 1 61.00-72.25; Large 1 65.00-75.00; Small 1 50.00-62.00. 700-1000 lbs. Medium 1 52.00-61.00; Large 1 54.50.
HEIFERS: 300-500 lbs. Medium 1 50.00-63.00; Large 1 54.00-65.90; Small 1 49.00-59.00. 500-700 lbs. Medium 1 48.50-59.50; Large 1 51.50-58.75; Small 1 40.00-52.50. 700-900 lbs. Large 1 44.00-52.50; Large 1 50.50.

Northern Va. Auction Summary
April 7-13
STEERS: 300-500 lbs. Medium 1 66.50-76.50; Large 1 64.00-76.00;

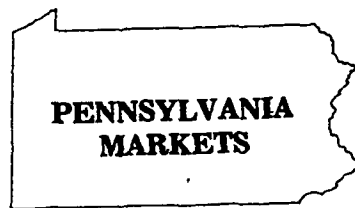
Small 1 60.00-70.00. 500-700 lbs. Medium 1 59.00-70.00; Large 1 65.50-73.00; Small 1 53.75-66.00. 700-1000 lbs. Medium 1 52.00-65.50; Large 1 56.75-64.00; Small 1 54.50-61.85.
HEIFERS: 300-500 lbs. 53.00-61.00; Large 1 54.50-63.00; Small 1 48.00-58.00. 500-700 lbs. Medium 1 49.50-60.00; Large 1 52.00-60.00; Small 1 50.00-56.50. 700-900 lbs. Medium 1 57.00; Large 1 54.50.

Southeast Va. Auction Summary
April 7-13
STEERS: 300-500 lbs. Medium 1 55.00-68.00; Large 1 67.00-68.50; Small 1 49.00-55.00. 500-700 lbs. Medium 1 59.75-68.00. 700-1000 lbs. Medium 1 43.00-54.00.
HEIFERS: 300-500 lbs. Medium 1 50.00-59.00; Large 1 56.60; 500-700 lbs. Medium 1 45.00-55.00; Large 1 54.50-59.50. 700-900 lbs. Medium 1 54.50.

Shenandoah Valley Livestock

Harrisonburg, Va.
 Monday, April 4
 Report supplied by auction
FEEDER CATTLE: Trend -

Feeder Steer 300-500 lbs. 3.00-4.00 higher, 500-1000 steady, Feeder Hfr steady, Feeder Bulls steady.
Steers: M&L-1 300-500 lbs. 66.00-75.00; 500-700 lbs. 63.00-70.00; 700-1000 lbs. 54.50-62.00; Holstein 300-1000 49.00-60.50. S-1&M&L-2 300-500 lbs. 51.50-62.00; 500-700 lbs. 56.00-66.00; 700-1000 lbs. 51.50-55.50.
Feeder Bulls: M&L-1 300-500 lbs. 56.50-69.50; 500-700 lbs. 52.50-58.00; 700-1000 lbs. 50.00-52.50. S-1&M&L-2 500-700 lbs. 44.00-46.75; 700-1000 lbs. 42.75-44.50. Heifers: M&L-1 300-500 lbs. 53.00-59.00. S-1&M&L-2 300-500 lbs. 48.00-51.00. Stock Cows: Beef 340.00-500.00; Baby Calves 40.00-125.00.
SLAUGHTER COWS: Trend - Steady to 1.00 lower. Utility & Commercial 2-4 38.00-45.00; Canner & Cutters 1-3 29.00-39.00.
SLAUGHTER BULLS 1 & 2 45.00-57.25.
LAMBS: Trend - Wool Lambs steady - no spring lambs last week. High Choice & Prime 63.25; Spring 70.25; Slaughter Ewes 5.00-11.00; Head Ewes & Lambs 35.00-57.00.
HOGS: US 1-3 200-240 lbs. 47.00; Sows 1-3 37.00-48.50; Boars 35.00.
VEAL: Good & Prime 69.00-86.00; Good 61.00-72.00.
SLAUGHTER CALVES: Good & Choice 65.00-75.00.



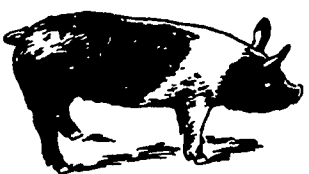
Lebanon Valley Auction

Fredericksburg, Pa.
 Tuesday, April 12
 Report supplied by PDA
CATTLE 241: Compared with last Tuesday's market, slaughter steers mostly steady on a comparable grade. Slaughter cows unevenly steady. Few High Choice & Prime No. 3-5 1265-1525 lbs. slaughter steers 66.75-68.60, Choice No. 24 1100-1350 lbs. 63.10-67.50, Good 58.00-64.00, Good & Choice holsteins 55.50-60.85, Standard 52.00-55.85, two Utility 45.00 and 50.50. Choice No. 2-4 900-1285 lbs. slaughter heifers 58.85-63.60, few down to 56.75, two High Choice & Prime No. 5 62.85-63.85, few Standard & Good 52.25-59.10, few Utility & Low Standard 45.00-49.75. Utility & Commercial slaughter cows 43.85-45.85, few to 50.10, Low Dressing Utility 38.10-42.85, Cutters 41.75-43.75, Canner & Low Cutter 37.00-40.85, few to 42.10, few Shells down to 31.00. One Good slaughter bullock at 53.50, few Standard 49.75-52.00. Few Yield Grade #1 1285-1595 lbs. slaughter bulls 50.50-56.10.
CALVES 218: Vealers grading Standard & Good 1.00-3.00 higher. Few Choice vealers at 90.00, few good 68.00-81.00, Standard & Good 90-110 lbs. 58.00-64.00, 65-90 lbs. 50.00-60.00, few Utility 55-80 lbs. 44.00-49.00. Farm calves, holstein bulls 90-125 lbs. 62.00-96.00; Holstein heifers 85-120 lbs. 100.00-119.00, few down to 65.00; few beef cross bulls & heifers 85-100 lbs. 62.00-85.00.
HOGS 180: Barrows & gilts .50-1.00 lower. US No. 1-2 220-250 lbs. barrows & gilts 47.10-47.60, lot

48.00, No. 1-3 200-260 lbs. 46.50-47.25, few No. 1-3 170-197 lbs. 40.50-44.50. US No. 1-3 290-600 lbs. sows 40.50-43.00, few to 47.00. Boars 37.00-41.00.
FEEDER PIGS 0: No sales on offer.
SHEEP 12: Choice 10-25 lbs. spring slaughter lambs 86.00-99.00, one at 106.00, lot Choice 65 lbs. at 74.00.

G & M Auction

Duncansville, Pa.
 Monday, April 11
 Report By Auction
Dairy Cows: \$65.00 to \$96.00 per head.
Slaughter Cattle: Steers choice 66.00 to 69.35, good 60.00 to 66.00, standard 54.00 to 60.00, utility 50.00 to 54.00; heifers choice 60.00 to 65.50, good 54.00 to 60.00, standard 48.00 to 54.00, utility 42.00 to 48.00; cows choice 48.00 to 50.00, good 44.00 to 48.00, standard 42.00 to 44.00, couple 52.50 to 54.00, utility 40.00 to 42.00, cutters 38.00 to 40.00, canners down to 34.00; bulls 1100-201b lbs. 52.00 to 64.60, 900-1100 lbs. 48.00 to 56.00.
Feeder Cattle: Steers choice 300-600 lbs. 54.00 to 68.00, heifers choice 300-600 lbs. 48.00-58.00 medium and good.
Calves: Vealers prime and high choice 90.00-106.00, good and choice 70.00-90.00, standard 50.00-70.00, utility down to 35.00; farm calves, Holstein bulls 90-120 lbs. 70.00 to 92.00, heifers 90-120 lbs. 90.00 to 138.00.
Hogs: Barrows and gilts 200-240 lbs. 47.00 to 49.00; couple 51.50, 170-300 lbs. 43 to 47.00; sows 42.00-48.75, boars 38.00-42.00.
Feeder Pigs: 25-35 lbs. 25.00 to 38.00 per head; 35-50 lbs. 38.00-54.00.
Sheep: Slaughter lambs 70-90 lbs. 60 to 74.00; ewes 15.00-25.00.
Goats 15.00 to 40.00.



EMERY'S BUYING STATION

OPEN TO RECEIVE YOUR MARKET HOGS

AT THE GREEN DRAGON MARKET RD 4, EPHRATA, PA 17522 1 MILE NORTH OF EPHRATA ON NORTH STATE STREET.

HOURS MONDAY, TUESDAY, and WEDNESDAY 6:00 A.M. to 11:30 A.M.

215-458-5677 Residence 717-733-9648 Office

YOU ARE PAID FOR YOUR HOGS IMMEDIATELY

Ken & Lois Emery, Proprietors

Green Dragon Livestock Sales

1 Mile North of Ephrata, PA



COWS COWS COWS

BUYERS FROM 3 STATES

Regular consignments from Bob Kennedy & Ed Stover plus 15 other local consignors. Lots of good Northern Feeders and Stockers.

SALE EVERY FRIDAY

Bulls, Steers, Slaughter Cows, Lambs and Veal Calves
 11:00 A.M. - Beef Sale Stockers & Feeders 200 to 250 each week.
 12:30 P.M. - Dairy Cows
 7:00 P.M. - Small Animal Sale

For Special Sales and Herd Dispersals on the farm or at our barn or other market information call: Office 717-733-2444.

WALTER H. RISSER, Proprietor

ATTENTION PORK PRODUCERS

McCoy Cattle Co.
 Lancaster Stockyards

is proud to announce

LARRY MULLEN JR.
 has joined our hog staff.



Larry has been involved in farrowing and raising hogs on the family farm.

He joins Ed Prosser and Mel Weaver to better meet your hog marketing needs.

Give us a call to discuss our marketing services

Hog Division phone 717-291-8912 Mon., Tues., Wed., Sat. A.M.
 Main Office - 717-397-1411
 Ed Prosser home - 717-367-2368
 Larry Mullen home - 717-367-3202
 Mel Weaver home - 717-626-5659



Be Wise... Check our prices before you buy!!

SPRAY MATERIALS

- * ATRAZINE
- * AATREX 90
- * DUAL 8E
- * BICEP
- * LASSO
- * LASSO-ATRAZINE
- * SUTAN +
- * BLADEX
- * PRINCEP
- * FURADAN
- * COUNTER
- * DYFONATE ETC.

MELVIN R. WEAVER

2213 Leabrook Road, Lancaster, PA 17601
 Ph: 717-898-8354 or 569-6576