

## Tobacco data is outlined

LANCASTER — Lancaster County tobacco growers should be paying attention to a couple of things:

-First, there had better be Ridomil in those seedbeds.

-Second, growing management of this year's crop is going to be more important than ever.

John Yocum, manager of the Penn State Southeast Research Farm, reports that the Blue Mold Alert has discovered the disease in both Florida and Georgia. In

Florida, it's found in both the beds and fields. In Georgia, it's only in the beds.

Thus, if weather conditions permit — mostly cool and wet — and the winds from the south are right, the air-borne spore could be carried into Lancaster County.

The use of Ridomil in the seedbeds as well as fields, which is followed by most growers, is now doubly important. In addition to the protection against Blue Mold, Ridomil also controls one of the

"dampening off" organisms, which are prevalent during these cool, wet times.

The weather will also put bed development a bit behind schedule, just as it may be affecting other field work.

Yocum plans to issue his first tobacco newsletter the beginning of May in time for transplanting. Growers interested in getting the periodic newsletter should get their names and addresses to him or to the Lancaster County Ex-

ension Office.

And why will management be all the more important this year?

Well, it's expected that tobacco growing this year will be at least split 50-50 between Pennsylvania chewing tobacco and the smoking leaf.

And, the auctions in Maryland this spring have been reflecting lower prices — about 25 cents or so below last year. There's a big crop, too.

So, good growing management

of this year's smoking leaf in Lancaster County will be vital, according to Yocum.

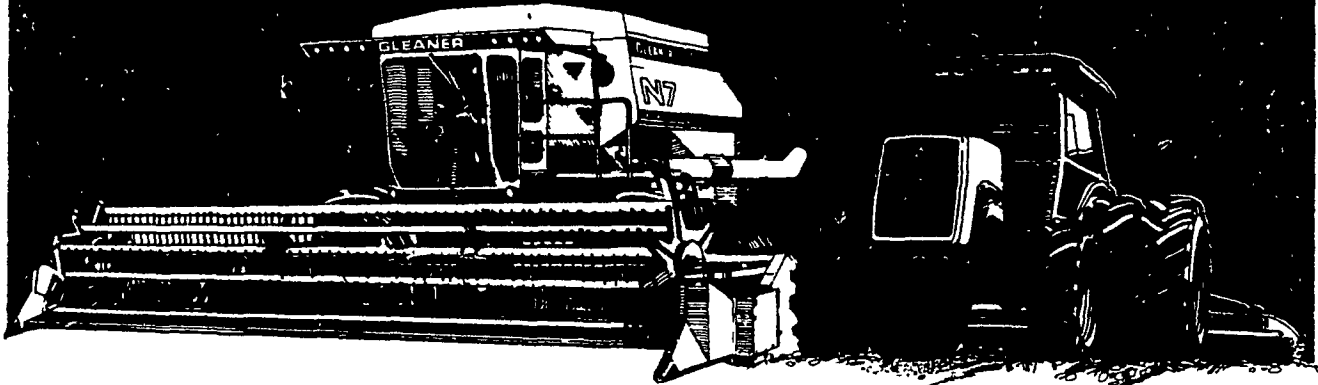
Buyers are going to be looking for good, quality leaf, he explained. And that means growing it the way smoking leaf should be, as opposed to chewing leaf, and doing things like grading it.

But those things are still a bit off in the future, but not that far. And growers better keep on top of them this year, it was advised.

# 6.9%

## 5-YEAR FARM FINANCE LEASE\*

With guaranteed purchase option.



Once again Allis-Chalmers leads the way in making farm equipment more affordable...with the 6.9% 5-Year Farm Finance Lease.

It's a plan that permits you to own new Allis-Chalmers farm equipment—tractors, Gleaner combines, and implements—while it gives you all the financial advantages of leasing, too. What's more, this plan can be tailored to your own special cash flow or income cycles, to make it fit your farming operation.

New Allis-Chalmers farm equipment is now even more affordable than ever, with the new 6.9% 5-Year Farm Finance Lease. It's the best deal around these days. See your nearby Allis-Chalmers dealer for full details.

### See how the Farm Finance Lease compares with a Standard Retail Finance plan:

	Standard 16% APR Retail Finance	VS.	6.9% Farm Finance Lease
Equipment Cost	\$50,000		\$50,000
Down Payment	11,500		11,500
Amount Financed	38,500		—
Annual Finance Payment	11,758		8,904
Total Finance Payments	58,790		47,116
Purchase Option	—		11,550
Total Cost to Own	\$70,290		\$58,666
			\$11,624 Savings over Retail Plan

Other options: • 8-3/4% A.P.R. 4-year financing • 10% A.P.R. 5-year financing • waiver of finance charges until Feb. 1, 1984, or • cash discounts.

**MARSHALL MACHINERY**  
Honesdale, Pa.  
717-729-7117

**PETERMAN FARM EQUIP.**  
Carlisle, Pa.  
717-249-5338

**B.H.M. FARM EQUIP., INC.**  
Annville, Pa.  
717-867-2211

**JOHN W. SAUMS & SONS INC.**  
Flemington, N.J.  
201-782-4242

**CANYON IMPLEMENTS INC.**  
Marfield, Pa.  
717-724-2731

**AGRONOMICS, INC.**  
Factoryville, Pa.  
717-945-3933

**NICHOLS FARM EQUIP.**  
Bloomsburg, Pa.  
717-784-7731

**ROY H. BUCH, INC.**  
Ephrata, Pa.  
717-859-2441

**C.J. WONSIDLER BROS.**  
Quakertown, Pa.  
215-536-7523

**JACK SHEARER EQUIP.**  
Johnstown, Pa.  
814-266-9721

**B. EQUIPMENT, INC.**  
Waynesboro, Pa.  
717-762-3193

**AG-IND. ED., INC.**  
Rising Sun, Md.  
301-398-6132

**GRUMELLI FARM SERVICE**  
Quarryville, Pa.  
717-786-7318

**C.J. WONSIDLER BROS.**  
Oley, Pa.  
215-987-6257

**POWER PRO EQUIP. CO.**  
Milroy, Pa.  
717-667-6504

**B & R FARM EQ.**  
Beavertown, PA  
717-658-7024

**COCHRAN FARM EQUIPMENT**  
Somerset, Pa.  
814-445-4189

**SHARTLESVILLE FARM SERV.**  
Hamburg, Pa.  
215-488-1025

**L.H. BRUBAKER, INC.**  
Lancaster, Pa.  
717-397-5179

**HUGHES BROS. INC.**  
Westminster, Md.  
301-848-6313

**DOTTERER & KOLESAR, INC.**  
Mill Hall, Pa.  
717-726-3471

**Better by Design**  
**ALLIS-CHALMERS**

\*Rental payments include a money cost equivalent to a 6.9% A.P.R. Allis-Chalmers reserves the right to alter or withdraw programs at its option. Equipment must be financed through Allis-Chalmers Credit Corporation. Gleaner is an Allis-Chalmers trademark.

**VERNON E. STUP CO.**  
Frederick, Md.  
301-663-3185

**WERTZ GARAGE, INC.**  
Lineboro, Md.  
301-374-2672

## SANDBLASTING REPOINTING WATERPROOFING

From repairing drafty, leaking walls to complete stucco removal and repointing, exterior restoration or farmhouses is our specialty!

### REASONABLE RATES JAMES H. DOSTER

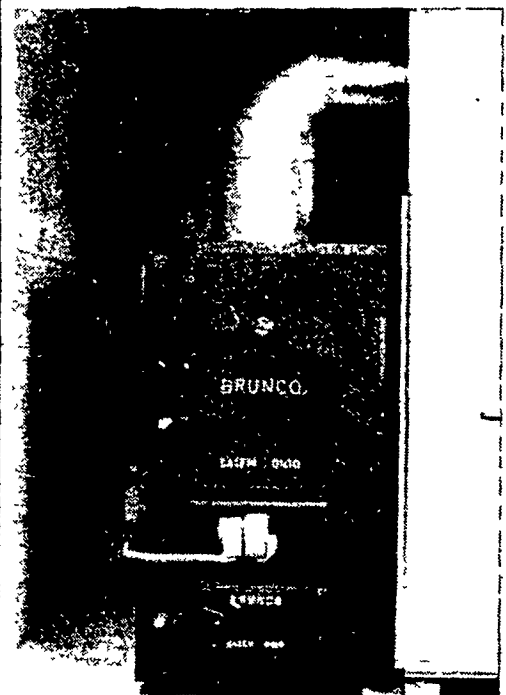
507 South Spruce Street  
Lititz, Pennsylvania 17543

For information or a free estimate, return coupon below.

Name \_\_\_\_\_  
Address \_\_\_\_\_  
City \_\_\_\_\_ State \_\_\_\_\_ Zip \_\_\_\_\_  
Phone: Area \_\_\_\_\_  
Directions to your home: \_\_\_\_\_

## BRUNCO

Supplemental or Independent  
Warm Air Furnace  
Burns Wood or Coal



Includes the following for easy installation: wall thermostat, 24 volt relay, fan limit control, draft fan and distribution fan.

### Bowman's Stove Shop, Inc.

R.D. 3, Napierville Road  
Ephrata, PA 17522  
Follow the signs from  
the Light at Hinkletown

Tues., Wed. 9-5;  
Thurs., Fri. 9-9; Sat. 9-4;  
Closed Monday



717-733-4973

