

Livestock market and auction news

Pa. Grain

Monday, April 4

Report supplied by auction
Compared with last Monday's market for Southeastern, Central and South Central Pa. Corn 5 cents to 30 cents higher, instances 40 cents higher. Wheat & Barley steady to strong. Oats mostly steady. Ear Corn steady to 10.00 higher.

Prices paid delivered to dealers dock - (All prices per bushel, except Ear Corn per ton.)

Southeastern Pa.

Corn No. 2-y range 2.99-3.43, average 3.22, New Crop 2.95-3.10; Wheat No. 2 range 3.28-3.60, few reported 3.70, average 3.48, New Crop 3.30-3.65; Barley No. 3 range 2.15-2.35, average 2.24, New Crop 1.70-2.20; Oats No. 2 1.78-1.90; average 1.82; Soybeans No. 1 range 5.80-6.40, average 6.06, New Crop 6.10-6.40; Grain Sorghum #2 range 2.40, average 2.40; Ear Corn range 76.00-90.00, average 82.62.

Central Pa.

Corn No. 2-y range 3.10-3.30, average 3.18; Wheat No. 2 range 3.20-3.40, average 3.29; Barley No. 3 range 1.85-2.00, average 1.86;

Oats No. 2 range 1.60-1.80, average 1.67; Grain Sorghum #2 range 2.95, average 2.95; Ear Corn 70.00-85.00, average 75.91.

South Central Pa.

Corn No. 2-y range 2.75-3.00, few reported 3.15, average 2.89; Wheat No. 2 range 2.85-3.30, few reported 3.60; average 3.09; Barley No. 3 range 1.80-1.90; average 1.83; Oats No. 2 range 1.65-1.95, average 1.77; Ear Corn range 73.00-85.00, average 77.75.

Southeastern Central & South Central Summary

Corn No. 2-y range 2.90-3.42, average 3.08; Wheat No. 2 range 3.20-3.60, average 3.34; Barley No. 3 range 1.80-2.30, average 2.00; Oats No. 2 range 1.60-1.90, average 1.74; Ear Corn range 73.00-86.00; average 79.09.

Western Pa.

Corn No. 2-y range 2.75-3.05, average 2.88; Wheat No. 2 range 3.00-3.10, average 3.03; Barley No. 3 range 1.85, average 1.85; Oats No. 2 range 1.55-1.70, average 1.62; Ear Corn range 70.00-77.00, average 72.75.

Keisters Auction

Middleburg, Pa.
Tuesday, April 5

Report Supplied By PDA

CATTLE 367. Compared with last Tuesday's market, slaughter steers mostly 75 cents to \$1.25 higher. Slaughter cows about steady. High Choice & Prime 1300-1570 lbs. No. 4-5 slaughter steers 66.35-65.35, one at 70.75, Choice 1000-1300 lbs. No. 2-4 62.75-67.10, Good 58.00-61.50, Good holsteins 56.00-59.00, couple to 60.25, Standard 50.50-56.00. Choice slaughter heifers 59.25-64.60, one at 68.50, few Good 52.00-58.00. Utility & Commercial slaughter cows 42.00-45.85, couple to 49.00, Cutters 40.50-42.75, Canner & Low Cutter 37.00-40.50, Shells down to 36.25. Few Choice slaughter bullocks 59.85-60.50. Yield Grade #1 1100-2045 lbs. slaughter bulls 48.00-53.50. Few Medium Frame #1 450-600 lbs. feeder steers & bulls 58.00-68.00.

CALVES 182. Choice vealers

86.00-112.00, Good 68.00-88.00, Standard & Good 70-100 lbs. 48.00-58.00, few Utility 50-80 lbs. 40.00-45.00. Farm calves, holstein bulls 90-125 lbs. 64.00-96.00, mostly 75.00-90.00; holstein heifers 90-150 lbs. 70.00-107.00.

HOGS 574. (Monday, April 4, 1983). Barrows & gilts steady to \$1 lower. US No. 1-2 210-235 lbs. barrows & gilts 49.10-51.10, few to 52.00, No. 1-3 190-250 lbs. 48.10-49.10, No. 2-3 190-270 lbs. 47.10-48.10. US No. 1-3 450-690 lbs. sows 46.75-47.75, No. 2-3 300-500 lbs. 42.25-44.00. Few Boars 38.50-40.00.

TUESDAY 55. Lot US No. 1-2 49.25, few lots US No. 1-3 46.60-47.50, lot No. 2-3 at 44.35.

FEEDER PIGS 209. US No. 1-3 20-35 lbs. feeder pigs 39.00-46.00 per head, No. 1-3 35-45 lbs. 45.00-56.50 per head.

SHEEP 10. Couple Choice 20 and 25 lbs. spring slaughter lambs 125.00 & 135.00, few Good 45-100 lbs. 72.00-86.00. Few Slaughter ewes 16.00-26.00.

Penns Valley Livestock

Centre Hall, Pa.
Tuesday, April 5

Report supplied by auction

Beef Cows: Utility and Commercial 41.65-45.00; Cutters 38.75-41.00; Canners 35.75-38.50; Shells 31.50.

Heifers: Commercial 45.25-50.00. Steers: Standard 47.50-53.10. Bulls: Good 51.25-53.25; Standard 48.00-50.50.

Feeder Cattle: 300-500 lbs. large frame 55.00-80.00; 300-500 lbs. small frame 51.00-64.00; 500-700 lbs. large frame 47.00-55.00; 500-700 lbs. small frame 44.00-56.00.

Veal Calves: Prime 94.50-107.00; Choice 81.00-94.00; Good 68.00-79.00; Standard 53.00-65.00; Utility 45.00-52.00.

Farm Calves: Bulls 75.00-95.00; Heifers 80.00-105.00.

Hogs: 42.75-44.50. Sows: 44.25-45.00. Boars: 38.50-42.00.

Shoats: 25-30 lbs. per head 26.00-32.00; 30-35 lbs. per head 33.00-44.00; 35-50 lbs. per head 46.00-73.00.

Green Dragon Livestock Sales

1 Mile North of Ephrata, PA



COWS COWS COWS
BUYERS FROM 3 STATES

Regular consignments from Bob Kennedy & Ed Stover plus 15 other local consignors. Lots of good Northern Feeders and Stockers.

SALE EVERY FRIDAY

Bulls, Steers, Slaughter Cows, Lambs and Veal Calves

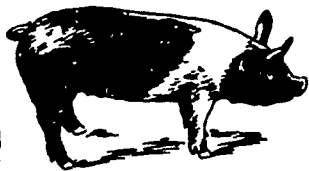
11:00 A.M. - Beef Sale Stockers & Feeders 200 to 250 each week.

12:30 P.M. - Dairy Cows

7:00 P.M. - Small Animal Sale

For Special Sales and Herd Dispersals on the farm or at our barn or other market information call: Office 717-733-2444.

WALTER H. RISSER, Proprietor



EMERY'S BUYING STATION

OPEN TO RECEIVE YOUR MARKET HOGS

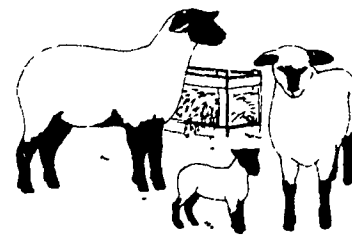
**AT THE GREEN DRAGON MARKET
RD 4, EPHRATA, PA 17522
1 MILE NORTH OF EPHRATA
ON NORTH STATE STREET.**

**HOURS
MONDAY, TUESDAY, and
WEDNESDAY
6:00 A.M. to 11:30 A.M.**

**215-458-5677 Residence
717-733-9648 Office**

**YOU ARE PAID FOR YOUR
HOGS IMMEDIATELY**

Ken & Lois Emery, Proprietors



EWES FOR SALE

Replace with High Quality Yearling Western Ewes

that will:

- Improve Prolificacy
- Provide Greater Hardiness
- Develop Faster Growing Lambs

Delivered ready for dispersal at \$90/hd. Ewes will be gate cut, weighing 90-110 lbs.

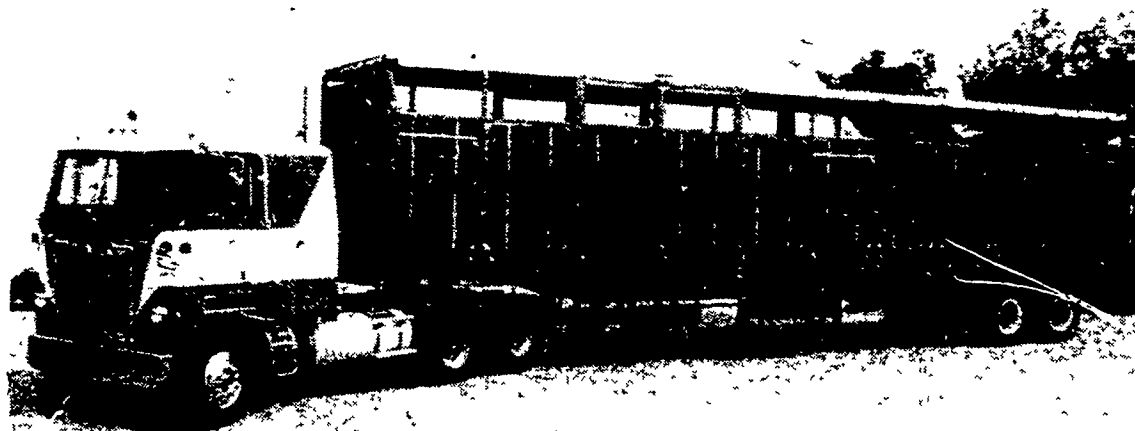
Terms: **CASH** — Deliveries Guaranteed

Serious Inquiries Only: 717-569-7857 Evenings
703-886-9379 Evenings

For quotations of next week's prices
call collect 215-488-7617
PA WATTS NUMBER
800-342-2249

LESS LABOR

VERY
SANITARY



LESS DOA'S

LESS COND.

Buyers of Leghorn Fowl
SECHLER'S POULTRY, INC.
Box G, Strausstown, PA 19559

SCOTT SECHLER

RICHARD SECHLER

NELSON LEGG

BEEFALO FOR SALE

-Semen in stock
-1/2, 3/4, 7/8 animals

BEEFALO N & J

4270
Quakerbridge Rd.
Princeton, NJ 08540
609-896-0336

CATTLE HAULING

- * Straight Truck and
 - * Tractor Trailer Available
- Call
717-665-7953