

Poultry Markets

N. E. Weekly Shell Egg Report

Tuesday, Apr. 5
Report supplied by USDA
Prices paid per dozen Grade "A" Brown eggs in cartons delivered to retail stores:

	Ex. Large	Large	Medium	Small
MASS.X	87-89	87-89	73-75	56-58
Mostly	87	87	73	56
N. HAMP.	76-80	76-80	61-65	48-52
Mostly	78	78	63	50
R.I.	78-85	77-83	63-70	52-55
Mostly	78-80	77-80	63-68	52-53
VERMONT	89-98	85-95	73-79	-
Mostly	98	95	77	-
MAINE	84-86	84-86	70-71	57-58

X Includes Central and Western Sections only.

Nest Run Eggs

Prices are from Egg Clearinghouse, Inc., (ECI) Durham, N.H. and reflect trading prices for gradable nest run eggs (GNR) on ECI, a nationwide trading center for producers, packers and marketers. GNR eggs are classified by weight in 30-dozen cases, and traded in lots of either 300 or 750 cases. Prices are FOB buyers dock, and are computed Tuesday and Thursday of each week. This week's prices for each classification were:

Classification	Per Case	Tuesday	Thursday
Class 1 - Large	48 lbs.	52	53
Class 2 - Large	45 lbs.	50	50
Class 3 - Medium	42 lbs.	47½	47½
Class 4 - Small	39 lbs.	41	41
Breaking Stock	48 lbs.	39	39
Checks	48 lbs.	34½	34½

New York Multiple Drop Broiler Report

Thursday, April 7
Report supplied by USDA
Current broiler/fryer negotiated prices for immediate delivery includes mostly multiple-drop shipments to New York City from Delmarva.
RANGE: U.S. Grade A 41-44; Branded U.S. Grade A 44-46.
WTD. AVG.: U.S. Grade A 43.10; boxes 1810; Branded Wtd. Avg. 45.66; 12,655 boxes.

Eastern Pa. & N.J. Poultry

Thursday, April 7
Report supplied by USDA
MARKET COMMENT: Prices are generally lower for next weeks deliveries. Offerings of live birds are fully adequate, too ample for plant needs. Canner pack movement is no better than fair.
Light Type Hens: mostly 7; Prices Paid at Farm: 6½ - 8.
F.O.B. Plant: 9-10, mostly 9.

Heinsey's Poultry Market

Roof's, East Petersburg
Tuesday, April 5
Report supplied by auction
MUSCOVY DUCKS, DRAKES: range .90-1.08 per lb.
MUSCOVY DUCKS, HENS: range .70-.88 per lb.
PEKIN DUCKS: range .60-.76 per lb.
PULLETS: 6-8 lbs. range .46-.58 per lb.
RED FOWL: 4-5 lbs. range .20-.26 per lb.
RED FOWL: 5-6 lbs. range .26-.38 per lb.
CROSSBRED FOWL: 6-9 lbs. range .11-.34 per lb.
CROSSBRED ROOSTERS: 4-6 lbs. range .40-.82 per lb.
CROSSBRED ROOSTERS: 7-11 lbs. range .14-.68 per lb.
GUINEA FOWL: range 1.10-1.26 per lb.
BANTY ROOSTERS: range 1.50-3.35 ea.
BANTY HENS: range 1.00-1.50 ea.
GEESE: 8-12 lbs. range .30-.68 per lb.
LEGHORN HENS: range .08-.22 per lb.
BROILERS: 4-6 lbs. range .32-.40 per lb.
PIGEONS: range 1.10-1.45 ea.
WHITE PIGEONS: range 1.50-2.50 ea.
RABBITS: 4-6 lbs. range .80-1.10 per lb.
RABBITS: 7-11 lbs. range .52-.90 per lb.
BUNNIES: range 1.00-4.25.
GUINEA PIGS: range .50-3.00 ea.
GOATS: range 16.00-51.00 ea.
KID GOATS: range 15.00-29.00
TOTAL AMOUNT COOPS: 652.

Weekly New York Egg Market

		Fri.	Mon.	Tues.	Wed.	Thurs.
From Friday, Apr. 1 to Apr. 8						
WHITE						
Jumbo	H	80	80	80	77	
Ex Large		76	76	76	73	
Large		72	72	72	69	
Mediums	O	65	65	65	64	
Pullets		53	53	53	53	
BROWN	L					
Jumbo		-	-	-	-	
Ex Large	I	83	83	83	83	
Large		78	78	78	78	
Mediums		65	65	65	64	
Pullets	D					
Peewees	Unquoted					
Off Grade	A					
Large		62	62	62	62	
Checks	Y	33	32	32	31	

Breaking Stock: Friday 11.40-12.00

Philadelphia Eggs

Thursday, April 7
Report supplied by USDA
MARKET COMMENT: Prices unchanged, carton egg movement has slowed in most quarters and orders for the past two days are noted as light and unaggressive. While inventories have increased this week, they are at manageable levels in most quarters, however, dealers are nervous as they anticipated further buildups if movement continues at present levels. Floor stocks of the major sizes are fully adequate for current demand. Offerings are spotty but available product is generally not being forced. Undertone unsettled and ranges from steady to mostly weak.

Prices to retailers: Sales to volume buyers, consumer grades white eggs in cartons delivered store door:
A Extra Large 70-76; A Large 69-71; A Medium 61-63.

Delmarva Poultry

Thursday, April 7
Report supplied by USDA
MARKET COMMENT: Ready to cook movement on whole birds has improved today and is noted as fair to occasionally fair. Discounting on parts remains fairly widespread but has diminished on whole birds with only the heavier weight sizes noted below premium. Advance interest is only fair with pricing for retail promotions generally taking place at levels unchanged from a week ago. The overall slaughter is heavy. Large supplies fully adequate. Weights irregular but at least desirable. Undertone weak.
Today's L.T.L. asking prices unchanged on U.S. Grade A at 43-46 cents.
Estimated slaughter of broiler fryers in Delmarva (000).
Estimated 1897; Actual 3/31 1825; Actual 4/5 18.87; Average Weights 4/5 4.31; 3/29 4.43.

AGRICULTURE

IT'S YOUR HEARTBEAT, AMERICA



COME ON YOU GUYS... MOVE OVER!

NEED MORE ROOM?
Read The Real Estate Ads
In Lancaster Farming's Classified Section



ATTENTION FARMERS

EVERY MONDAY
HATFIELD PACKING CO. and
BAUMS MEAT PACKING
Will Receive Your
Hogs and Cattle at the
DANVILLE LIVESTOCK MARKET
RD4, Danville, PA

- We will receive your hogs from 8 AM to 12 Noon every Monday. Your hogs will be weighed and paid for immediately.
- We will also accept your sows & boars.
- Your cattle will be received from 12 Noon to 4 PM. We will either pay for your cattle immediately or you may sell them dressed weight.
- There will not be a commission or yardage fee deducted from your check.
- You may call our office Monday morning and we will be able to tell you the base price for hogs for the day.
- Please come and give us a chance to continue doing business with you through this method.

FOR INFORMATION CALL
717-275-2880

Copyright 1983 by Lancaster Farming
P.O. Box 366 - Lititz, PA 17543
Office: 22 E. Main St., Lititz, PA 17543
Record-Express Office Building
Phone: Lancaster 717-394-3047
or Lititz 717-626-1164

Robert G. Campbell, Publisher
Dick Angenstein, Editor
Debra L. Koontz, Home Editor
Trish Williams, Staff Writer
Sylvia Cooper, Staff Writer

NEWS CORRESPONDENTS

Donna M. Tommelleo, Adams County
Littletown 717-632-1731
Patty Gross, Bedford, Blair, Huntingdon counties
Martinsburg 814-793-4256
Robin Phillips, Berks County
Mohrsville 215-926-1261
Jane Bresee, Bradford County
Ulster 717-358-3346
Beth Hemminger, Cumberland, Franklin
and Perry counties
Newville 717-486-5322
Sally B. Bair, Lancaster County
Columbia
Joyce Bupp, York County
Seven Valleys

Subscription Price:
\$7.50 per year; \$13.00 - 2 years
\$14.00 per year outside of:
PA, NJ, MD, DE, NY, VA & WV

Established November 4, 1955
Published every Saturday
by Lancaster Farming, Lititz, PA
Second Class Postage paid at
22 E. Main St.

Lititz, PA 17543 ISSN0023-7485
For address change form or new
subscription see Mailbox Markets.
Members of Newspaper Farm Editors Assn.,
Pa. Newspaper Publishers Association,
and National Newspaper Association.



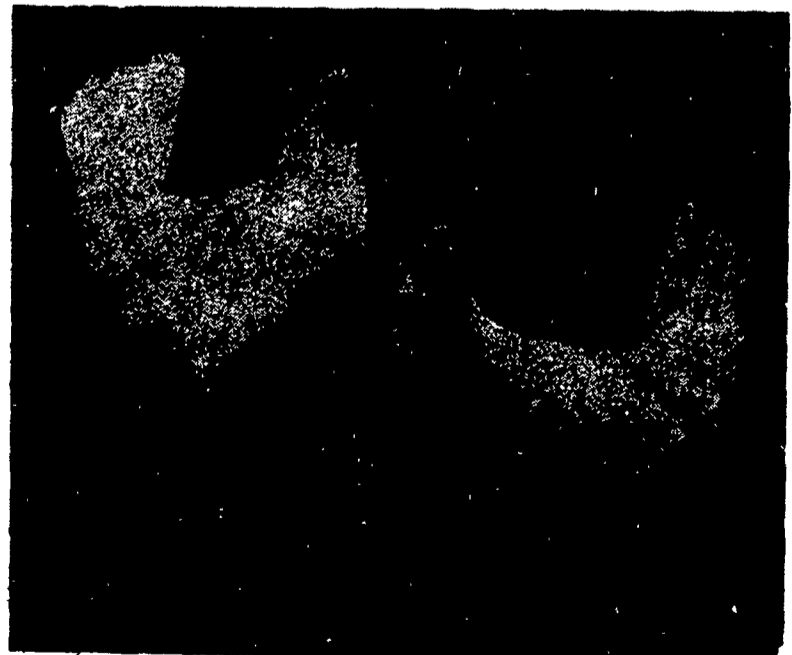
Two Ways To Improve Your Profit Picture XL & DK

Two layers with distinctly different characteristics... From two separate research programs.

You don't have to buy from two different companies to get the two top layers on the market.

The XL shows excellent production under many management conditions. The DK responds best to finely tuned, close management.

DEKALB Layers are bred to possess the economic traits most applicable to your operation. You do have a choice... The high productivity XL or the high efficiency DK.



Moyer's CHICKS, INC.

DEKALB Quakertown, PA 18951
BROWN & WHITE (215) 536-3155
EGG LAYERS

HUBBARD
WHITE MT.
BROILERS