



Chester County DHIA Monthly Report

February 1983

The cow with high fat was owned by John S. Stoltzfus. The cow with high milk was owned by Melwood Farm.

OWNER NAME OR NO.	BREED	NO. COWS	% DAYS IN MILK	LIBS. MILK	% FAT	LIBS. FAT
John S. Stoltzfus						
Rosita	3	4-9	305	24,006	4.5	1078
Kathy	3	7-6	305	24,351	4.2	1019
Patsy	3	3-7	305	19,654	4.6	909
Rono	3	4-3	294	22,524	4.0	906
Alma	3	3-5	305	18,915	3.8	727
George P. Lamborn						
Aster	3	4-4	305	26,730	3.9	1044
Ardrossan Farms						
Snoquen	1	3-7	305	23,179	4.3	1001
Sulrose	1	4-4	305	20,304	4.0	818
Jnotory	1	2-7	305	17,495	4.6	800
Rosroyl	1	3-7	294	18,269	3.9	716
Hikjade	1	3-4	305	17,971	3.9	706
Dunwood Farm						
Mabel	3	4-0	305	23,795	4.2	991
Robert E. Pepple						
26	3	8-1	305	25,911	3.7	971

Melwood Farm						
Roleen	3	4-6	305	27,462	3.5	967
Harold J. Ranck						
Neil	3	6-2	305	24,977	3.8	950
H & R Mason						
5-1	3	3-7	305	21,306	4.4	936
12-G	3	3-8	305	24,918	3.2	798
59-G	3	2-6	305	18,200	4.0	722
Paul King						
Beautis	3	6-1	305	19,616	4.7	930
Willowland Farm						
Toni	3	4-4	305	23,165	4.0	924
Andrea	3	5-7	305	24,563	3.7	912
Liz	3	7-6	305	23,638	3.7	865
E. Robert Peifer						
14	3	6-2	305	19,374	4.7	909
10	3	3-6	305	22,691	3.6	827
David K. Stoltzfus						
25	3	3-5	305	23,705	3.7	884
J. Elmer Lapp						
Iris	3	6-8	305	20,955	4.2	872
Vernon Guest & Son						
Clara	3	3-9	305	20,471	4.2	870
Effie	3	3-7	305	17,628	4.2	734
Lester Eby						
Syl	3	6-6	305	21,298	4.0	858
Nancy	3	3-5	305	17,669	4.3	762
Walmoore 1						
330	3	3-3	305	22,122	3.9	853
258	3	4-9	305	17,220	4.4	757
Maplesway Farm						
Sarah	3	4-4	305	21,052	4.0	844
Star	3	4-2	305	21,416	3.5	759
Jane	3	5-7	305	21,333	3.5	747
Kupl Bros.						
Kenny	3	9-9	305	23,037	3.6	839
Herman Stoltzfus						
Bell 5	3	3-6	305	22,822	3.6	831
Bonni 11	3	4-7	305	19,267	4.1	789
Leon D. Kurtz						
Emma	3	5-10	295	21,351	3.8	822
Olive	3	7-2	305	21,238	3.7	789

Lancaster Farming, Saturday, April 9, 1983-D19

Cora	3	5-10	305	20,339	3.7	761
Sadie	3	3-11	305	22,102	3.4	756
David Darlington						
Artms 51	3	7-11	305	17,540	4.7	816
Samuel B. Acker						
648	3	2-11	305	23,675	3.4	815
B102	3	3-4	305	16,588	4.7	775
576	3	4-8	305	18,437	4.0	742
B110	3	3-0	305	17,318	4.1	705
J. Raymond Harnish						
Holly 40	3	4-8	305	21,811	3.7	803
Kenneth Umble						
Ruby	3	3-11	305	21,515	3.7	803
Roxanne	3	4-4	305	20,730	3.6	754
Freckle	3	3-5	305	21,373	3.4	726
David L. Weaver						
49	3	4-7	305	21,846	3.7	798
12	3	5-1	300	20,277	3.8	766
14	3	3-6	305	18,861	3.8	718
Wilmer L. Hostetter						
Susy	3	6-8	305	21,084	3.8	791
Martha	3	7-3	305	20,861	3.4	704
Mrs. John B. Hannum						
235	3	3-4	305	20,495	3.9	791

(Turn to Page D21)

Perry Co. DHIA

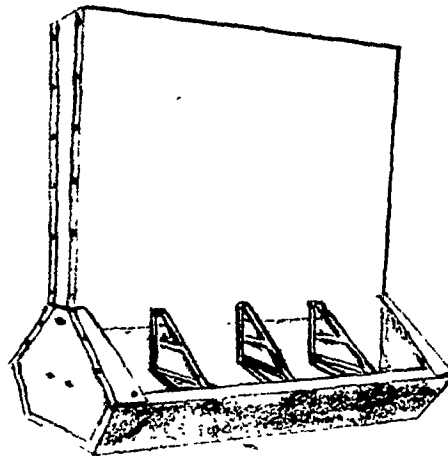
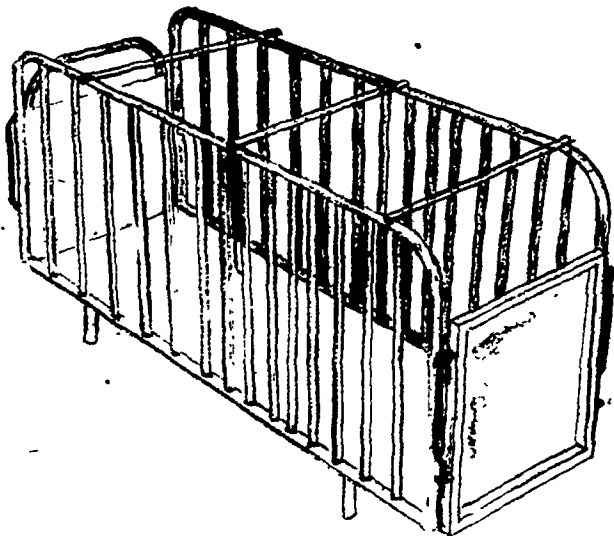
(Continued from Page D18)

Cedar Lane Farm						
55	6-6	305		19,203	3.6	698
J. Ted Troutman Sons						
12	3-2	305		19,208	3.6	682
Howard & Paul Barkley						
Rena	5-11	305		15,273	4.3	655
J.W. & C.L. Achenbach						
Noel	4-3	305		18,882	3.6	685
M.W. Smith Farms						
Andy	5-1	305		17,883	3.7	666
Ingrid	3-2	305		19,694	3.5	695

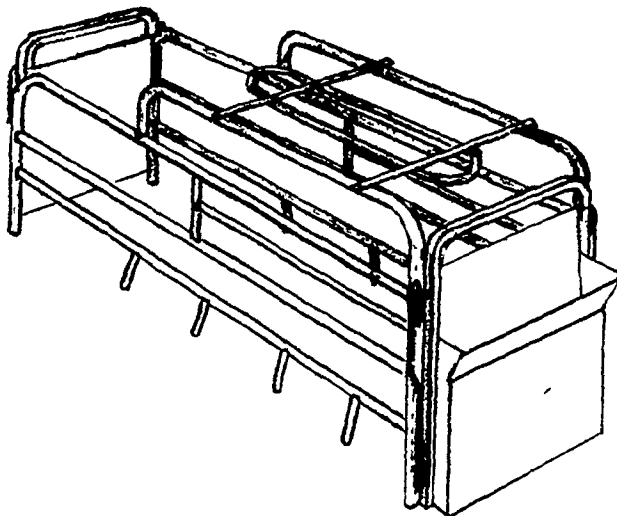
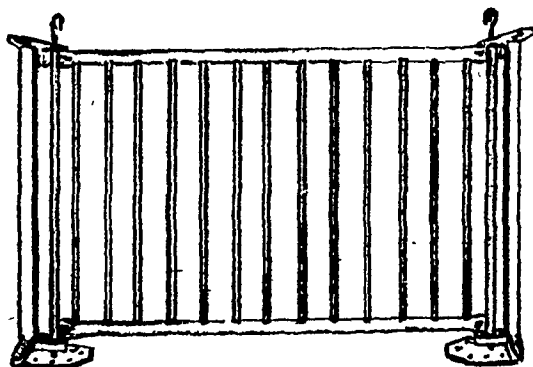
The Systems Approach of Hershey Equipment lets you put it all together

Today's profit minded poultry, swine, and grain producers must think in terms of an automatic system.

"System thinking" can help you plan away problems before you begin, or it can help you automate away problems you now have. Hershey Equipment Co. is geared to provide all components of the system including equipment, plumbing, electrical and building. This will assure that the pieces will fit together to form a profitable system.



H HERSHEY Hog Systems
Hot Dip Galvanized



H HERSHEY EQUIPMENT COMPANY, INC.

SYCAMORE HIG PARK
235 PLANE TREE DRIVE
LANCASTER, PA 17603
(717) 393-5807

Route 30 West at the
Centerville Exit.

Designers of Quality Systems for Poultry, Swine and Cattle Handling

Patz

★ Barn Cleaners, Manure Pumps, Manure Stackers, Silo Unloaders, Bank Feeders, Feed Conveyors

MARVIN J. HORST

DAIRY EQUIPMENT

1950 S. 5th Avenue, Lebanon, Pa. 17042
Phone: 717-272-0871

CONTACT US

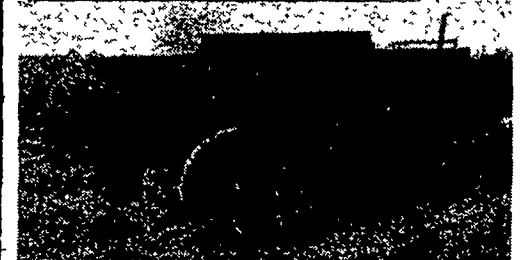
For
MANURE HANDLING EQUIPMENT

Semi- and Liquid Spreaders -
Ground Driven - Easy Running
Priced Reasonably

PIT ELEVATORS

ALLIS CHALMERS AND WISCONSIN POWER UNITS

COMPACT ROTO BEATERS



Equipped with rubber mounted axle shocks

HYD. POWERED BARN YARD SCRAPERS - EXCELLENT FOR GRADING - SNOW REMOVAL

PLATE SHEARING & PRESS BRAKE WORK

SMUCKER

WELDING & MANUFACTURING

2110 Rockvale Road
Lanc., PA 17602
PH: (717) 687-9198