

For Sale - Used Supreme batch feed mixer, needs about \$300-\$500 in repairs. \$1000. 717-564-587.

For Sale - Used Supreme batch feed mixer, needs about \$300-\$500 in repairs. \$1000. 717-564-587.

For Sale - MF 2745, 1979 model, low hrs., 8 speed, factory duals, best offer, phone evs., 717-568-7271.

For Sale - JD 8350 grain and bean drill 16-10 DD openers, three years old, like new cond., \$4150, 717-322-6526, Lyc. Co.

JD 720 diesel, w/e, 3 pt. 814-793-4293.

JD 530, 3 pt. and fenders, exc. 814-793-4293.

4 ton Stoitzius fertilizer spreader, w/27' boom. 717-837-3132.

JD 7000 corn planter, six 30" rows, liquid fertilizer, squeeze pump, insecticide boxes, and liquid herbicide spray attachments, cast steel press wheels, \$10,000. Will accept IHC 6 row 400 Cyclo planter on trade. 215-967-1744.

New 8' extra heavy duty scraper blade, (York rakes) sells new for \$1150. Will sell for \$650. 717-965-3488.

Wanted - Caterpillar blade and hydraulic setup for 7UD4. 814-793-4293.

JD 1240 plateless corn planter for sale, \$1500. Lebanon County. 717-949-3637.

JD 2510, gas, w/e, very good condition, \$4500 firm. 717-784-7459.

For Sale - IH 56 four row planter, dry fertilizer w/separate placement and insecticide, good condition, priced to sell, make offer. Fiberglass dry fertilizer box for IH 56, excellent, \$100. 717-286-2345 or 286-1375.

For Sale - Vicon Hay rakes, Vicon disc cut mower 8'. KBA Disc 20x20, Mc 2 way plows steel bottom, #9 Mc silage cutters very good, Mc #9 recondition grass mower, Electric welder w/Wis. 60 P. engine. Priced to sell, \$700. Gideon L. Fisher, 61 B Old Leacock Rd., Ronks, PA 17572.

1981 Haybuster no-till drill, innovated w/1/4" fluted colter, spring tension over double disc openers, in perfect condition, excellent for planting soybeans and no-till barley and wheat, \$6500 firm. 301-795-4160 after 6 PM.

JD 4240 diesel, cab, air, FM stereo, quad range trans., dual 18.4x38 wheels, exc. condition. 717-745-3233.

IHC 400 Cyclo no-till 4 row wide Corn Planter, excellent cond.; Hawk Bilt #205 left hand delivery tank spreader \$1500. 717-536-3383.

NH 456 trailer mower, has double guards, 1 year old, like new. 717-354-0266.

Wanted - Farmall A for parts. 717-354-5867.

Oliver Model 129 haybine, excell. cond. \$1650

DENNIS M. MILLER Rt. 22 Grantville, PA 717-838-1888 anytime 717-469-0937 daily

7'x16' wagon bed. 717-397-1710.

460 IH tractor, JD baler, Ford hay rake, NI corn picker, Transport elevator, Hay and grain wagons, Circular corn crib, Tag-along trailer. 717-629-1816.

JD 2440 Diesel tractor 1200 hrs., 145 loader, JD 336 baler with kicker, 3 Lamco 18' bale wagons, good cond., 717-225-1855 before 9 p.m., York Co.

JD 730 diesel, elec. start, 3 pt. hitch, 814-793-4293.

Int. 806 diesel, narrow front with fast hitch, very good condition, 717-532-7054.

JD 3010 diesel. 814-793-4293.

NH 34 field chopper for sale. 717-532-9234.

For Sale - JD 2510 and IH 86 hydro., excell. cond., call evs., 215-593-2689.

AC 600 no-till planter w/monitor and dry fertilizer, \$4200 firm. 717-784-7459.

IH 464 gas w/2250 loader, 700 hours, like new, \$7000. 301-833-9091.

1080 MF w/cab. 814-793-4293.

RAKE SPECIAL  
NI 402 Excellent... \$1200  
JD 851 Good... \$500  
NH 256 Excellent... \$1500  
NH 256 Very Good... \$1350  
NH 256 Good... \$1250  
NH 56 Good... \$700  
WENTZ FARM SUPPLY  
Palm, PA 215-679-7164

JD 4020 Diesel, 1968 model with wide front, dual hyd., diff. lock, 18.4x38" tires, very nice. 717-532-7054.

Int. 56 2 row cornplanter, excellent, \$1050. Miller's Repair 717-656-6109.

NH 357 grinder-mixer with 120 bu. tank, H.D. drive, 3 screens, 20' auger, 4 years old, good cond., approx. 40 tons alfalfa-oats haylage, high moisture ear corn, 301-452-5657, 836-1910.



FOR SALE  
Farmall Super M w/live hyd., good cond., \$1690.

MM G900 diesel, 1967 \$3700.

Case 970, 12 spd., power shift, new 20.8 x 34 tires, good cond., \$9,900

Kuhn hay tedder, 10' NEW, \$1495

Dion 60" forage blower, good cond. \$1385

N.I. forage blower, model 820, 54" fan, good cond. \$875.

NH model 469 mow-conditioner, \$2,560 good cond.

NI #323 1 row picker, like new, 90 acres, \$4,300

Pittsburg 12' 3 pt. spring tooth harrow, NEW, \$700

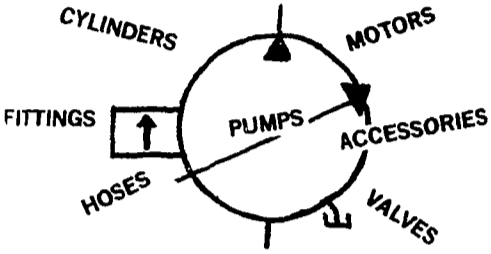
JD KBA transport disk harrow, 28 blades, good cond. \$950

IH 5100 16x7 soybean special grain drill with adj. depth press wheels, new cond., 50 acres, \$5,200

HEISEY FARM EQUIPMENT, INC.  
RD 1 Jonestown, PA 717-865-4526

## HYDRAULICS

New & Used



(New) Sunstrand Piston Motors - 3600 RPM @ 15 GPM Max PSI 5000 up to 30 HP  
List \$517.00 ..... Our Price **\*200.00**  
(New) Webster Pressure Compensated Piston Pumps (Closed Center) 18 GPM @ 1800 RPM, List \$925.00 ..... Our Price **\*350.00**  
6x24 Heavy Duty Cylinders, Good Used Cond. .... **\*100.00 ea.**

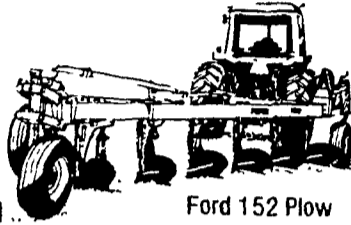
Wholesale and Retail  
SALES - SERVICE - INSTALLATIONS

### Beiler Hydra-Matics

Hydraulic & Air Supplies  
Box 587 RD #3 New Holland, Pa.  
UPS Service (717-656-2846)

## BIG SAVINGS ON FORD 152 DEMO PLOW

6 - 18" G.P. Bottoms, auto re-set beams Cat II Hitch with side hill cylinder. All hydraulic cylinders and hoses,



Ford 152 Plow

Gauge wheel 6-20" Cushioned shank disc coulters. All assembled ready to go, New warranty!  
New List **OUR PRICE**  
\$10,462.00 **\*5999.00**

With Financing Available!  
Only (1) at this price Hurry!

TRENTON FORD TRACTOR, INC.  
2836 Brunswick Pike  
Trenton, N.J. 08638  
(609) 883-7360  
(215) 752-0867



## USED EQUIPMENT

	List	SALE
JD 4640, 900 hrs., w/cab	\$32,500	<b>*29,500</b>
JD 4440, 385 hrs., w/cab	38,000	<b>32,000</b>
JD 4010 diesel tractor	10,500	<b>8,800</b>
JD 2520 diesel, PS	9,000	<b>7,800</b>
JD 2510 diesel, WF	7,800	<b>6,200</b>
JD 950 roller harrow, 10'	3,800	<b>3,200</b>
JD 640 rake	1,175	<b>975</b>
JD 1209 mower conditioner	3,200	<b>2,500</b>
JD 6620 sidehill combine, (used 1 year)	62,500	<b>55,000</b>
JD 643 corn head	11,900	<b>10,000</b>
Kools 1000 RPM blower	1,275	<b>750</b>

**717-463-2394 after 5 PM**  
**717-463-3511 7:30 - 5:00**

# GUNTHER HEUSSMAN INC.

SO. 5TH ST., EMMAUS, PA. 18049

215-965-5203

Call John Bolton or Gunther

## QUALITY LATE MODEL FARM EQUIPMENT

### TRACTORS

1975 JD 4420 Dsl. Cab & Air, Very Nice  
JD 4320 Dsl. w/Cab, Very Nice  
JD 4020 D WF Synchro Range  
JD 4020 Dsl. side console, power shift, very nice  
JD 4000 Dsl., WF, 2400 hrs., 18x38 rubber  
JD 4010 Gas, Very Good  
JD 3020 Dsl. Power Shift  
JD 2540 900 hrs. Like New  
JD 2840 540 hrs., Very Nice  
JD 2640 Dsl. Fully Equipped  
JD 2520 Gas, very good  
JD 1530 Dsl. w/Loader  
JD 1520 Hi-Lo Ind. PTO  
IH 1456 Dsl., WF, Very Nice  
IH 1066 Dsl., Cab and Air, 200 hrs. since engine overhaul, new TA. and clutch  
IH 886 Dsl. w/cab and air  
IH 756 Dsl., WF, 3 pt. very nice  
IH 1086D Cab and Air, 1500 hrs., 20x38 Tires, Very Nice  
Oliver 1850 Dsl. WF 3 Spd  
White 4-150 4 whl. drive w/dual cab, air, 3 pt. 1650 hrs. \$12,850  
White 2-105 w/Cab  
AC 180D, WFE  
MF Super 90 WFE

### DISCS

JD RW 8' very good  
JD 11' RWA Transport  
JD BWF 16' wing Rock-Flex  
JD BWF 12'6" Rock Flex  
IH 470 Fold 17'6"  
IH 370 12'

### HEAVY DUTY DISCS

JD 1630 12' very good cond.  
JD 4000 Double Offset 12' 8"

### PLOWS -SEMI-MOUNTED

JD 1450 5x16  
JD F145 4 & 5x16  
IH 530 3x16, Very Good  
IH 642 4B Roll Over  
IH 710 5x16

### PLOWS -AUTOMATIC

IH 710 6x16 Spr. Reset  
IH 710 5x16 Spr. Reset  
Ford 3x16 Semi Mounted Spr. Reset  
Oliver 4x18 Hydraulic Reset  
JD 2500 6x18 SP Reset  
JD 2500 5x18 on Land Hitch  
IH 710 7x18 on Land Hitch SP Reset  
IH 700 4x18 Sp. Reset

### SPRING SPECIALS

JD 7000 6 Row 30" Conserv. Planter Dry Fert., Monitor & Insect. **\*6800**  
Case 730 Tractor WFE **\*2250**  
Oliver 4x18 Hyd. Reset Plow **\*1150**  
Lely Rotterra **\*1250**

### CORN PLANTERS

JD 7000 Conserv. 6R dry fert., auger fill, insect., pop. mon.  
JD 1250 6R plateless, insect., w/dry fert.  
JD 1240 Plateless, dry fert., insect.  
JD 1240 Plate and Plateless, liq. fert. & insect.

### CHISEL PLOWS

PULL TYPE  
IH 10'  
IH 13' Consortil w/rake  
Glenco 12' MOUNTED  
Brady 9'

### COMBINES

1980 JD 6620 Dsl., Cab, Air, Reverse Feeder House, 500 hrs. excellent  
1979 Gleaner KII w/Cab, 900 hrs., like new  
1979 JD 4400 Diesel, cab and air, 700 hrs., like new  
1976 JD 6600 Dsl. w/cab, very nice, choice of heads  
1978 IH 715 German Dsl., cab & air, 580 hrs., like new  
JD 3300 Gas w/cab, choice of heads, very nice  
MF 510 Dsl. w/cab, Very Good, Choice of Heads  
**GOOD SELECTION OF GRAIN PLATFORMS AND CORN HEADS TO FIT MOST COMBINES**

### BALERS

NH 273 Twine w/bale chute  
NH 278 w/cab, Like New  
IH 241 Round Baler  
JD 336 Wire  
JD 336 Twine w/thrower

### CORN HEADS

MF 24, 33, 43, 44  
AC F430  
AC KF330, A330  
JD 243, 244, 343, 443, 444, 643  
IHC 843

### MISCELLANEOUS EQUIPMENT

JD 1209 Mower Cond., very nice, late model  
JD late model 17x7 DD Grain Drill, grass and fert.  
NI 324 Picker w/12 roll husking bed  
IH 4R Cultivator  
Century 300 gal. pull type sprayer, very nice \$975  
JD 3 pt. 20' Folding Field Cultivator w/rake  
NH 479 Haybines  
IH 18x34, 18x38 & 20x38 Rr. Axle Duals  
JD 300 Husker w/2 or 3R Head, Very Good  
NI 319 2 Row Mtd. w/12 Roll Husking Bed, Very Good  
NI Picker Sheller 2 Row Wide and Narrow  
JD RM & RG 4 & 6 R Cultivators  
Grim Hay Tedder traction driven  
NI 323 1 Row corn picker very nice.  
NH 770 Harvester w/2R Corn Head & Wide Pickup  
JD 47 Loader, fits 1520-2020 Tractor