

REAL ESTATE

TURN BACK THE CLOCK. Low down payment buys old-fashioned 220-acre N.Y. stock farm 58 acres tillable, large spring-fed pond, yr rd stream, 8-rm farmhouse needs TLC, 2 barns Can't last at \$69,000. \$14,000 down, owner financing, 10 1/2% annual percentage rate. Call or write for free catalog. UNITED FARM AGENCY, INC., 612-RLF West 47th St., Kansas City, Mo. 64112 Ph. Toll-Free: 1-800-821-2599.

**DIAL FOR DEIBERT**  
717-425-3313  
LYKENS VALLEY FARM

33 Acres Nice Land in High State of Cultivation, 3 Bedroom Dwelling, Heat & Bath - PRICE REDUCED

**11 ACRES WOODED MT. LAND**  
523' Frontage on Hardtop Road South Side Mahantongo Mt. \$7,000  
**GEORGE N. DEIBERT**  
Realtor  
717-425-3313  
Lanny Lupold, Associate  
717-682-9494

**FOR SALE**

52 acre farm with road frontage and a stream of water, West of Chambersburg.

145 acre farm in Amberson Valley, stone and frame house.

35 acres of limestone land, no improvements.

110 acres of limestone land, no improvements.

Large hog farm in Path Valley.

**Robert F. Crider, Realtor**  
14 N. Main St.  
Chambersburg, PA 17201  
717-264-8528

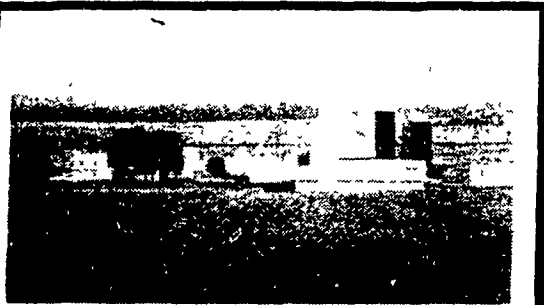
REAL ESTATE

**GETTYSBURG AREA FARMS**

**STONE FARMHOSUE**, 51.76 acres, 44x70 Bank Barn, Excellent Spring House, Large Implement Shed, Chicken House, and 2 Car Garage. Home recently modernized and full of appliances. Gettysburg School District. \$154,500 (8323)

**IDEALLY SITUATED** - Magnificent Pre Civil war stone home in lovely setting on 89 acres. 4 bedrooms, den, family room, game room, 2 1/2 baths, 3 fireplaces. Barn, 3 car garage with workshop. Outbuildings. \$375,000 (#8214)

Call **ERA Marshall L. Miller, Inc.**  
Real Estate  
717-334-6283 or outside of Adams Co.  
1-800-443-2781, Ext. C-53



**FOR SALE**

**Beautiful Centre County Farm Birth-place of "Rosanna of the Amish"**

**FOR SALE:** Outstanding Centre County Dairy Farm. 122 Acres of very fertile, level and gentle-sloping tillable land. 20 Acres excellent permanent pasture, balance woodland for a total of 184 acres.

**BUILDINGS:** Master Dwelling (Excellent in everyway). 20x40 in-ground swimming pool.

Good Tenant House. (Where Rosanna was born)

Farm Buildings consist of a complete excellent set of all buildings necessary to house and operate a modern Dairy Operation of 110 milk cows, free-stall housing, complete housing for young cattle of all ages. Includes 2 large Harvestores, (1 20x60, and 1 20x70) and 2 concrete silos. (20x60)

This is truly a rare opportunity for a farm of this quality to be offered for sale!

Call or Write:  
**Edith F. Reese**  
R.D. 1, Box 91, Warriors Mark, PA 16877  
Telephone: 814-692-8307

REAL ESTATE

REAL ESTATE

REAL ESTATE



**FARMS FOR SALE**

Dairy, Horse, Beef & Crop (Bedford & Blair Counties)

Blair County

160 acre farm, 73 tillable, \$120,000  
175 acre farm 145 A. tillable Menn. area \$175,000  
84 A. Dairy 18x65 w/new unloader 40' bunk, large house & bldgs. \$199,000

Bedford County

85 acre farm, mostly tillable, \$66,900  
125 acres, 74 prime tillable, new 80x160 clear-span bldg with 25x96 clear-span area designed for horse stalls and 32x45 attached equip. shed. 50x75 bank barn and 32x48 stall barn w/tack room. Beautiful remodeled colonial house. Spring & well. Adjacent 85 acres mostly wooded with house & barn available with above farm or separate.

174 acres bottom land, 30x60 silo, large house needs repairs, stream & well.

135 acres bottom land, large stall barn, brick colonial house. Ex. for horses or beef.

188 acre A-1 dairy farm with parlor, Harvestore, stream pond, more land available.

Huntingdon County

219 acre farm with 40x150 bank barn, remodeled 3 BR house stream Ex beef, sheep or horse farm. 5 miles turnpike.

96 acre dairy farm, 46 stanchion barn, 18x65 silo, stream.



**Zane Helsel Real Estate Inc.**

407 Logan Blvd. Lakemont  
Altoona, PA 16602  
814-946-1215

JERRY RITCHEY, farm agent  
814-224-4464

Independently Owned

**FARMS FOR SALE**

West Hempfield Twp. - beef, hog & veal operation, bunk feeder, Star Silo, room to feed more than 150 steers, room for over 300 hogs, 180 hd. veal barn, brick house built in 1880, exc. cond., 105 acres, 70 acres tillable. Priced to sell at \$435,000.

Chester Co. Farmette - unique country property and excell. business oppor., beautiful buildings, a lovely ranch house, w/a new quality kitchen, included also is a barn, swimming pool, a cottage, that could be an apartment, office or shop. Presently is a goat operation, but has many other possibilities. Call Kingsway Realty for more details.

Just reduced \$30,000, 10 acres and stone farmhouse, beautifully remodeled w/back-up wood boiler, for low heat cost. Southern York Co. priced at \$79,900.

Southern York Co. - 135 acres general farm. 120 A tillable, approx. 140 bu. per acre corn yields. Stone farmhouse, 2/3 remodeled, lots of road frontage, priced at \$298,900.

York Co., stone farm house, good cond., 135 acres, 120 good tillable acres, priced at \$324,900. Leads of road frontage.

Cumberland Co. working dairy farm, in the Newville area. 27 tie stalls, great set-up for a family farm. 85 tillable acres, 126 total acres. Large implement shed, pond, priced to sell at \$198,000.

Price Reduced-Starter dairy farm in a fertile valley, near Mennonite schools and churches, 2 unit home, great beginning farm, Snyder-Juniata Co. area, \$75,500

Montgomery Co. dairy farm - stone home, 5,000' road frontage, sewer, price \$250,000.

Produce farm off of Route 11 and 15. Brick home, large bank barn, pond & lovely setting. 100 acres, Juniata Co., price reduced to \$130,000.

Farmette Snyder Co. 10 acres, w/frame home, plus barn, priced to sell at only \$45,000

Danville area, 108 acres of land, 70 tillable, frame home, good soil, owner says sell, priced at only \$97,000. Would make a terrific Christmas tree farm.

**KINGSWAY REALTY**  
REALTORS  
1770 Oregon Pike  
Lancaster  
Phone: 717-569-8701  
or Ephrata 717-733-3344

**FARM & LAND SALE**

Steuben Cty

1) **240 ACRE FARM:** Suitable for beef, horses or sheep - 50% wooded and 50% pasture (additional pasture land also available) two story farmhouse and two barns. Very private area conveniently located near town. \$105,000. M-443

2) **105 ACRE FARM:** Ideal for beef, horses or cash crop. Good productive soil, 20 acres hardwoods, three bedroom ranch home, barns and outbuildings. \$82,500-owner terms. 641Z

3.) **383 ACRES & RANCH:** Suitable for sheep, rolling hills 50% wooded, stream and 5 acre pond (plenty of water) plus the 4 bedroom home all for less than \$300 per acre. 48S

4) **97 ACRES FARMLAND:** Excellent area, some woods, farm house and two barns. Only \$65,000 - Seller financing available with 20% downpayment. 41S

Weekend Appointments Available

Land Specialists

**CENTURY 21**

**THE LANE AGENCY**

607-776-7682

**SELLING YOUR FARM?**



**SANFORD G. LEAMAN**  
ASSOC. BROKER  
and  
AUCTIONEER

**AUCTION OR BROKERAGE?**

It is your option when you call us. We will explain both plans and then you choose. No obligation.

**NEW LISTINGS**

**LANCASTER COUNTY**

98 acre modern dairy, 60 comfort stalls, 2 Harvestores - 1-20x70, 1-20x35 plus 18x65 stave silo w/unloader and bunk feeder, barn cleaner, pipeline milker, 1000 gal. bulk tank, 40x100 freestall for young stock. Double stone and frame home w/6 bedrooms 85 acres tillable, in high state of cultivation. May 1st possession. Priced under \$4300 per acre.

**SNYDER COUNTY**

118 acre modern dairy w/36 comfort stalls, barn cleaner, pipeline milker, 600 gal. bulk tank. Modern 4 bedroom frame home. Some woodland and adjoining a creek. Immediate possession possible

**MONTGOMERY COUNTY**

50 acres prime development land with modern 1 1/2 story, 5 bedroom stone home. Close to industry, shopping and within 5 mi of two country clubs

**LEBANON COUNTY**

107 acre dairy and hog or could be a steer set-up - your choice on a very productive farm. You have the opportunity of restoring an early log home or modernize it. The location is ideal and there is great potential. Call for price and financing details

**PERRY COUNTY**

Steer operation at present but could easily be a beautiful dairy farm. There is a 14x60 silo, milk house and large brick dwelling. 60 acres woodland, 35 pasture and the balance of the 200 acres in a high state of cultivation with good soil and excell. production record. We're asking only \$1,375 per acre

**CUMBERLAND COUNTY**

75 acre modern dairy with silo and unloader, barn cleaner, pipeline and implement shed, lg. modern dwelling, limestone soil in high state of cultivation. Buy this one and get a 3 yr. rental with first right of refusal on another farm that would give you a total of 135+ acres. Call today.

**YORK COUNTY**

12 acre farmette with modern steel barn and modern ranch home. An excellent buy and ready for you to be a gentleman farmer in the Dover area. A great place to retire! Open to offers.

**NORTHUMBERLAND COUNTY**

Excellent grain, beef, dairy, and chicken farm. Develop it to your liking or desire. 3 bedroom, modern brick dwelling. 100 acres tillable with 100+ bu per acre corn production. Price reduced and help in financing!

If you are thinking of buying or selling a farm or farmland call Sandy today. He will be glad to serve you in any county.



**HIGH REALTY CORP.**

1837 William Penn Way  
Lancaster, Pa. 17601  
(717) 393-5661 Home 656-6834  
A High Industries, Inc. Company

**COMPLETE HOG OPERATION FOR SALE**

Used 1 1/2 years, must be moved in 60 days. Equipment and building in excellent cond.

**INCLUDES:**

28x240 Nebraska type building. Concrete slats with Ley scraper Harvester Slurry System. Automatic curtains, gates, S.S. feeders. Automated feed system, Harvester Rollermill, 3 bins 54 ton capacity.

Much more - 201-948-6594