

# Hay Markets

## Regional Hay

Friday, March 25  
Report supplied by PDA  
Hay slow, steady to 5.00 slower, straw steady.  
Alfalfa 85.00-115.00; Mixed hay 70.00-80.00; Timothy hay 60.00-80.00; Straw 50.00-55.00, few to 70.00; Mulch 25.00-45.00.

## Green Dragon Hay

Ephrata, Pa.  
Friday, March 25  
Report supplied by PDA  
139 loads hay and 51 loads straw.  
Alfalfa 76.00-156.00, mostly 90.00-129.00; Mixed hay 41.00-125.00, mostly 66.00-110.00; Timothy hay, 69.00-97.00, few down to 47.00; Orchard Grass 2 loads 47.00 and 71.00; Straw 71.00-100.00; Ear Corn 8 loads 83.00-91.00, 1 load 76.00; Corn Fodder 5 loads 42.00-62.00.

## Belleville Hay

Belleville, Pa.  
Wednesday, March 23  
Report supplied by PDA  
49 loads hay & 5 loads straw.  
Alfalfa 80.00-132.50, few down to 67.00; Mixed hay 46.00-125.00, mostly 61.00-87.50; Timothy hay 1 load 110.00; Clover one load 100.00; Straw 57.00-66.00.

## Dewart Hay

Dewart, Pa.  
Monday, March 21  
Report supplied by PDA  
5 loads hay and 2 loads straw.  
Mixed hay 80.00-90.00, one load 60.00; Straw 58.00 and 64.00.

## Pa. Grain

Monday, March 28  
Report supplied by auction  
Compared with last Monday's market for Southeastern, Central and South Central Pa. Corn, strong to 20 cents higher. Wheat steady to strong, instances 20 cents higher, Barley steady to strong. Oats steady to 10 cents higher. Ear Corn steady to 7.00 higher.  
Prices paid delivered to dealers dock - (All prices per bushel, except Ear Corn per ton.)

**Southeastern Pa.**  
Corn No. 2-y range 2.92-3.30, average 3.12, New Crop 2.85-3.07; Wheat No. 2 range 3.28-3.70, average 3.45, New Crop 3.20-3.60; Barley No. 3 range 2.10-2.35, average 2.20, New Crop 1.60-2.00; Oats No. 2 1.80-1.90; average 1.82; Soybeans No. 1 range 5.65-6.03, average 5.87, New Crop 6.10-6.30; Grain Sorghum #2 range 2.40, average 2.40; Ear Corn range 75.00-85.00, average 80.33.

**Central Pa.**  
Corn No. 2-y range 2.85-3.20, average 2.97; Wheat No. 2 range 3.20-3.40, average 3.26; Barley No. 3 range 1.85-2.00, average 1.87; Oats No. 2 range 1.60-1.80, average 1.66; Grain Sorghum #2 range 2.60, average 2.60; Ear Corn 70.00-80.00, average 72.55.

**South Central Pa.**  
Corn No. 2-y range 2.65-3.00, average 2.81; Wheat No. 2 range 2.85-3.25, few reported 3.60, average 3.07; Barley No. 3 range 1.80-1.95, few reported 1.65; average 1.81; Oats No. 2 range 1.65-1.95, average 1.80; Ear Corn range 74.00-85.00, average 76.13.

**Southeastern Central & South Central Summary**  
Corn No. 2-y range 2.80-3.30, average 3.01; Wheat No. 2 range 3.20-3.65, average 3.31; Barley No. 3 range 1.80-2.24, average 1.98; Oats No. 2 range 1.60-1.90, average 1.74; Ear Corn range 70.00-85.00; average 76.48.

## Western Pa.

Corn No. 2-y range 2.65-3.00, average 2.81; Wheat No. 2 range 3.00-3.20, average 3.08; Barley No. 3 range few reported 1.85, average 1.85; Oats No. 2 range 1.55-1.65, average 1.61; Ear Corn range 69.00-71.00, average 70.00.

## Kiester's Hay

Middleburg, Pa.  
Tuesday, March 29  
Report supplied by auction  
43 loads.  
Alfalfa 89.00-132.00; Mixed 51.00-92.50; Timothy 59.00-69.00; 10 loads straw 57.00-67.00; 1 load ear corn 85.00; 1 load shell corn 2.75 per bushel; 2 loads oats 1.65-1.70.

## Leinbach's Hay

Shippensburg, Pa.  
Tuesday, March 29  
Report supplied by auction  
61 loads.  
Alfalfa 70.00-145.00; Mixed 51.00-121.00; Timothy 64.00-85.00; Clover 71.00-79.00; Straw 42.00-75.00; 1 load corn 89.00; 1 load firewood 34.00.

## Hagerstown Hay

Wednesday, March 23  
Report supplied by auction  
23 loads.  
Alfalfa 118.00-146.00; Alfalfa & Grass 86.00-115.00; Clover & Timothy 77.50-101.00; Timothy 85.00-106.00; Straw 65.00.

## Westminster Livestock Auction

Westminster, Md.  
Wednesday, March 22  
Report supplied by auction  
BUTCHER COWS: Steady to 50 cents higher! High Yield 47.00-48.50; Standard & Utility 42.00-46.75; Canners 39.00-42.00; Shelly 39.00 Down. BULLS: One Good 1140 lbs. at 54.25; Light Weights 46.00-50.00. STEERS: Choice 60.00-61.75; High Good Low Choice 56.00-60.00; Good 54.00-56.00. HEIFERS:

## Good-Low Choice 54.00-57.25.

BUTCHER HOGS: Steady prices. US #1&2 215-240 lbs. 49.00-50.00; US 1&3 215-240 lbs. 48.00-49.00; US 2&3 250 lbs. 45.00-46.00; 170-180 lbs. 41.00-43.50. SOWS: 500-640 lbs. 45.00-48.25; 350-465 lbs. 40.00-43.50. BOARS: 400-600 lbs. 39.00-39.50.

VEAL CALVES: No Big Calves offered. Killers 80-100 lbs. 50.00-60.00.

CALVES RETURNED TO FARM: Good demand. Holstein Heifers few 95 lbs. 84.00; Holstein Bulls 100-125 lbs. 75.00-99.50; 90-100 lbs. 65.00-85.00.

LAMBS: 100 Hd. offered. Choice Spring 25-40 lbs. 85.00-100.00; 40-50 lbs. 75.00-91.00; 50-75 lbs. 70.00-85.00; 75-105 lbs. 60.00-63.50; Sheep 17.00-30.00; Some 8.00-16.00.

STOCK CATTLE: Fair run - Good demand. STEERS: 200-300 lbs. 57.00-72.00; 300-500 lbs. 65.00-71.00; 500-750 lbs. 60.00-66.00. HEIFERS: 300-600 lbs. Choice 58.00-65.00; Good 52.00-58.00; Holsteins 200-300 lbs. 59.00-65.00. BULLS: Few 300-500 lbs. 51.00-52.00.

PIGS AND SHOATS: Smaller run. By the Head 15-30 lbs. 22.00-36.00, 30-60 lbs. 39.00-42.00. By the Lb. Stock Boars 190-235 lbs. 39.00-44.00, one to 69.00.

HAY: Timothy & Mixed 76.00-102.00 per ton; Clover \$2.10 per bale; Straw! \$70.00 per ton; 1 load \$1.20 per bale.

## Penns Valley Livestock

Centre Hall, Pa.  
Tuesday, March 29  
Report supplied by auction  
Beef Cows: Utility and Commercial 42.35-47.50; Cutters 40.10-41.75; Canners 36.75-39.85; Shells 33.35.  
Heifers: Good 53.50-55.50; Standard 48.00-51.60; Commercial 44.00-46.75.  
Steers: Good 50.75-53.75; Standard 48.75-49.50.

Bulls: Good 52.00-56.25.  
Feeder Cattle: 300-500 lbs. large frame 54.00-64.00; 300-500 lbs. small frame 42.00-50.00; 500-700 lbs. large frame 50.00-59.00; 500-700 lbs. small frame 48.00-54.00.

Veal Calves: Prime 99.00-107.00; Choice 82.50-96.00; Good 69.25-80.25; Standard 55.00-68.25; Utility 48.50-54.50.

Farm Calves: Bulls 85.00-105.00; Heifers 70.00-82.00.

Hogs: 46.75-48.00.  
Sows: 40.50-43.75.  
Boars: 38.50-44.25.

Shoats: 25-30 lbs. per head 29.00-34.00; 30-35 lbs. per head 36.00-41.00; 35-50 lbs. per head 40.00-44.00.

## Greencastle Livestock

Greencastle, Pa.  
Monday, March 28  
Report supplied by auction  
CATTLE: Butcher Steers - Choice up to 63.75; Medium - Good 53.00-61.50. Butcher Heifers - Choice 60.00-61.00; Medium - Good 45.00-58.00. Butcher Cows - Utility - Good 44.00-49.00; Canners and Cutters 40.00-46.00; Shells down to 32.50. Butcher Bulls - Medium - Good 47.75-55.00. Stock Steers - Medium - Good up to 68.00. Stock Heifers - Medium - Good up to 56.50. CALVES: Medium - Good Calves - 160-220 lbs. 80.00-100.00; 125-160 lbs. 70.00-85.00; 100-120 lbs. 55.00-75.00; 80-100 lbs. 50.00-65.00. Holstein Bull Calves up to 92.00. Holstein Heifer Calves up to 126.00. Light and Green Calves down to 40.00.

HOGS: Good - Choice Butcher Hogs - 190-225 lbs. 47.00-49.00; 225-250 lbs. 48.00-49.00. Good - Choice Butcher Sows - 400 lbs. down, up to 46.00; 400 lbs. up, up to 46.50. Heavy Boars up to 36.50. Pigs per head 15.00-34.00.

Sale Every Monday 6:30 P.M.

# NEW HOLLAND SALES STABLES, INC. - THE ACTION AUCTION

**MONDAY**

**8:00 AM**



**EARLY BIRD HOG SALE**  
For Your Protection Your Hogs Must Be Identified

**10:00 AM**



**11:00 AM**



**HAY  
STRAW  
GRAIN**

**1:30 PM**

**BEEF SALE  
CALF, SHEEP,  
GOATS**



**WEDNESDAY**

**12:00 NOON**



**HEIFERS, BULLS**

**NEW HOLLAND SALES STABLES, Inc.**

12 Miles East of Lancaster  
on Route 23, New Holland, Penna

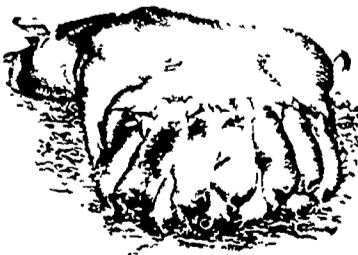
**The Action Auction  
717-354-4341**

Mgr. - Abe Diffenbach - 717-393-4464  
Norman Kolb - 717-397-5538

Field Representatives  
Alan Diffenbach 717-656-9806  
Luke Eberly 215-267-6608 - 738-1865

**WEDNESDAY**

**FEEDER PIG SALE  
1:30 P.M.**



We endeavor to keep our  
barns cleaner than yours.  
State graded until 12 Noon

**THURSDAY**

**11:00 AM**



**STEERS -  
BEEF COWS**

**3:30 P.M.**

**CALVES**



**SHEEP  
GOATS**



Market your livestock thru New Holland Sales, your neighbor does  
Pick-up your check before you leave