



# Farm Women Societies

## Lancaster Co. Society 31

Lancaster Farm Women 31 met at the home of Nancy Wenger, recently, to view slides of the south Pacific islands as shown by the Rev. Earl Ziegler.

Members voted to contribute to the following organizations: the Terry Beard Fund, \$400; the Reber Testerman Fund, \$100; and Teen Challenge, \$100.

Society 31 will be entertained by Society 5 at the Farm and Home Center on April 30; and will attend the annual Chester County Farm Women Convention, April 12 at the Oxford Methodist Church.

The next meeting will be held at the Mechanic Grove Brethren Church to entertain Society 24.

## Berks Co. Society 8

Berks Society 8 met recently at the home of Viola Yost. Before the business meeting, members visited the ceramic shop of Debbie Adam.

Members made plans for the following events: ham on roll sale,

April 9; Berks Heim Team, May 11; and Berks Heim Bingo, April 7.

Final plans were made for the 15th anniversary celebration scheduled for April 26 at the Shartlesville Grange Hall.

## York Co. Society 26

York Society 26 met at the Newberrytown Plaza recently to discuss future plans.

Six members of the society signed up to work at the York

Hospital Fete on May 20 and 21; and plans were finalized for a trip to Chambersburg.

The April meeting of Society 26 will be held at the home of Catharine Dorwart.

## Kutztown Grange

The Kutztown Grange plans an open house on April 7, 7:30 p.m. at the Grange Hall. Prizes will be awarded for 25-, 50- and 60-year memberships, granger of the year, community citizenship, and youth booster.

Entertainment will include a German Folk Dancing Band, a skit and several games.

The public is invited to this gayla event. For more information contact Debbie Berger at (215) 683-7500.



### Saturday, April 2

Lancaster Society 27 meets for a luncheon at the Farm and Home Center

### Tuesday, April 5

Lancaster Society 5 meets to sew at the Lancaster General Hospital

Berks Society 5 meets to visit a solar home

### Thursday, April 7

Lancaster Society 20 meets to entertain Society 13 and 15 and the county officers

Lancaster Society 17 meets for a miscellaneous auction

### Friday, April 8

Lancaster Society 13 to be entertained by Society 20

### Saturday, April 9

Lancaster Society 6 meets at the home of Martha Eshleman to hear the Lancaster County dairy princess

Lancaster Society 26 meets at the Farm and Home Center for slides of Israel

Lancaster Society 2 meets with hostess Ruth Waltz

Lancaster Society 19 meets to entertain Society 12 and the county officers at the Hempfield Church of the Brethren

(Turn to Page B30)

### UNITED STATES DEPARTMENT OF AGRICULTURE Agricultural Stabilization and Conservation Service NOTICE OF SALE

The Columbia County ASCS Office, acting as agent for the Commodity Credit Corporation (CCC) and located at 1129 Old Berwick Road, Bloomsburg, Pa. 17815, hereby announces the contemplated sale of the following described property by sealed bid, subject to the terms and conditions of this invitation to bid. Bids will be opened on April 15, 1983, 10:00 A.M. Bids will not be considered unless received prior to such opening time.

DESCRIPTION OF PROPERTY: 1 27-7 M.F.S. Grain Storage Bin (10,175 bu capacity) with auger, sweep, fan, motors, grain spreader, ladders, 48' PTO transport auger, hoppers and down spout

LOCATION OF PROPERTY: Harris Farm located 1 mile off Ravenscreek road, 3 miles Northeast of Stillwater, Pa. 17878.

#### TERMS AND CONDITIONS:

- (1) All bids must be in writing and signed by the bidder.
- (2) Alternative or tie-in bids will not be accepted.
- (3) CCC reserves the right to reject any or all bids.
- (4) The property will be sold on an as-is, where-is basis.
- (5) Payment shall be by postal money order, certified check, or draft guaranteed by the banking institution on which drawn. Payment may be by uncertified personal or firm check only if approved by the County Executive Director.
- (6) Payment in full must be made prior to commencing removal of the property.
- (7) The purchaser shall remove the property from the premises within 10 days after notification that the bid has been accepted.
- (8) Title to the property shall vest in the purchaser when payment is made. After passage of title, risk of loss or destruction from any cause shall be borne by the purchaser

March 25, 1983  
Fronie C. Greenly  
County Executive Director  
Telephone: 717-784-4722



RD 1 Germansville  
PA 18053  
**PAT-RIC'S HENRY**  
Grand Champion  
Angus Bull

1983 - National Western Stock Show Bull Sale

1982 - Keystone International Livestock Expo.  
New York State Fair  
West VA State Fair  
PA Farm Show

1981 - Eastern National Lvstk. Expo  
Keystone International Lvstk. Expo.

### SEMEN

\$50 per unit or \$10 per straw  
\$50 certificates when needed

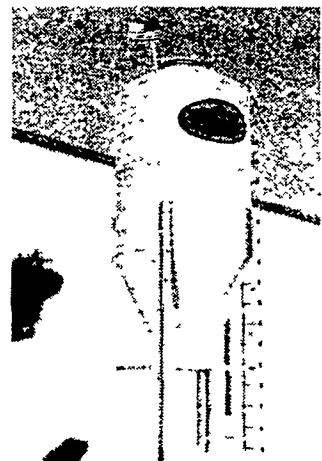
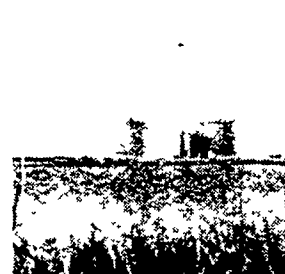
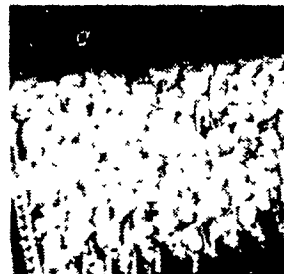
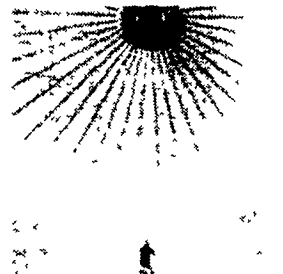
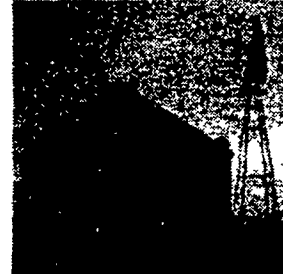
### FOR SALE

2 yr. old bulls & yearling bulls

Weekdays: 215-398-0424  
Nights: 215-767-1260

ISN'T IT TIME TO GO.... **GSE**

LET E. M. HERR EQUIPMENT ASSIST YOU ON YOUR NEED FOR  
**GRAIN STORAGE — FROM FEEDING SYSTEMS,  
ON FARM STORAGE, TO COMMERCIAL —**  
Grain Bins From 673 to 500,000 Bushel Capacity - Feed Bins From  
3 ton to 58 ton



- FEED BINS • GRAIN BINS
- WET HOLDING TANKS
- UTILITY, FLEX, TRANSPORT, INCLINE, VERTICAL AND BIN UNLOADING AUGERS
- BUCKET ELEVATORS
- DRYING AND AERATION FANS
- AERATION FLOORS
- GRAIN CLEANERS

\* FULL LINE PARTS DEPARTMENT \* WE SELL, SERVICE & INSTALL

**E. M. HERR EQUIPMENT, INC.**

RD 1, Rt. 272 S., Herrville Rd.,  
Willow Street, PA 17584

Serving The Industry For  
Over 20 Years

**SALES - PARTS -  
- ERECTION -  
SERVICE**