

Holstein quilt sells for \$1300

To kick off the Maryland State Holstein Sale in Grantsville, Garrett County, a beautiful handmade black and white Holstein quilt was auctioned off. Charles Iager of Fulton, Md., paid \$1300 for the lovely.

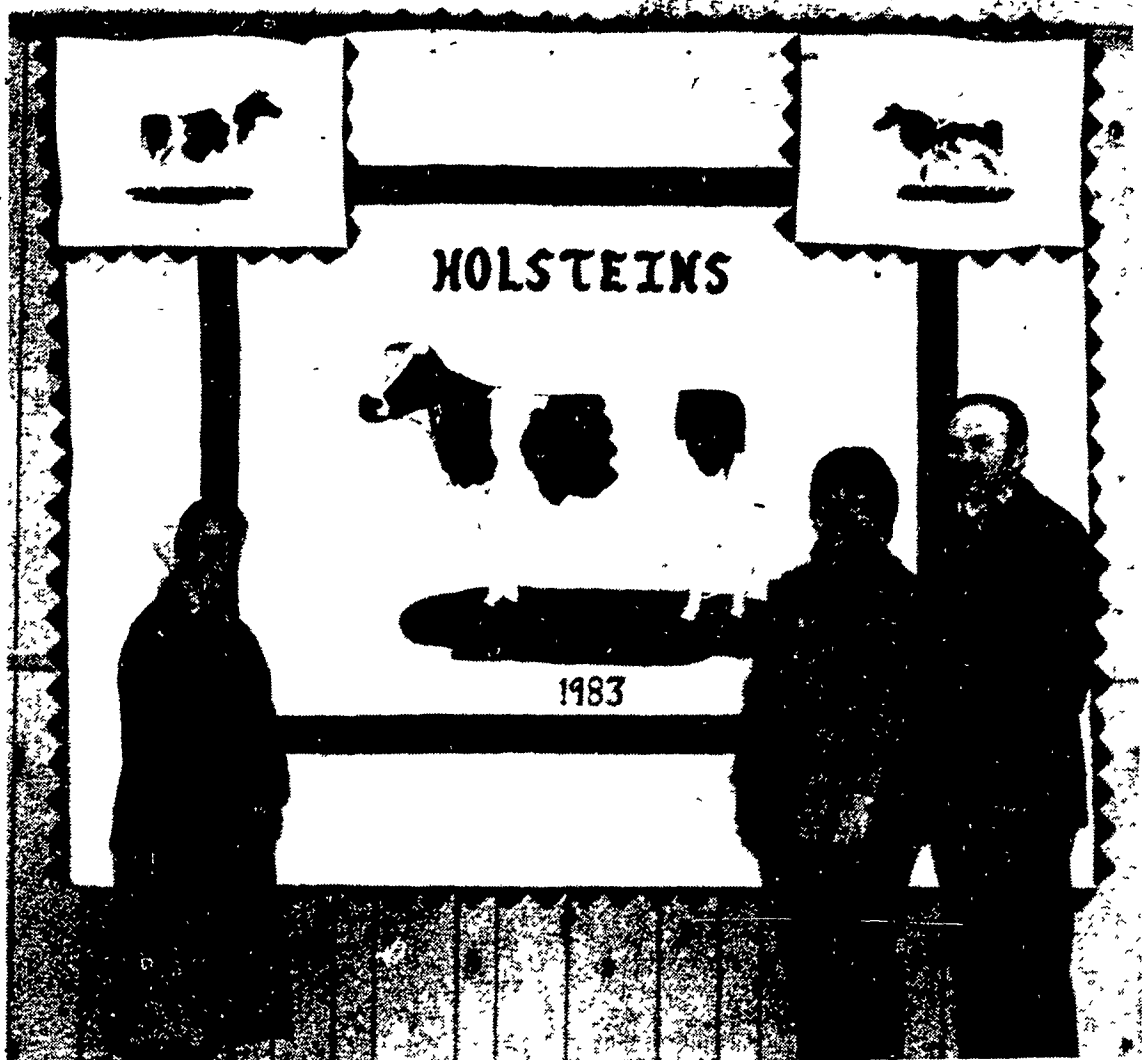
The quilt's maker, Mrs. Naomi Yoder of Cherrie Kreek Holstein Farm, Oakland, Md., will add Iager's farm prefix "Md-Maple

Lawn" to the quilt before she ships it down to the Iager family.

Charles and wife Judy were chairmen of last year's State Convention and Sake held in their native Howard County. Judy is a Maryland editor of Southeastern Holstein News, and she helped to cover this year's convention and sale.




© 1511 MAR'78



Naomi Yoder, left, designed and made this lovely quilt, that sold for \$1300 to Judy and Charles Iager at the Maryland Holstein Sale, last week.



WORLD'S FINEST SPREADER FOR FERTILIZER, SEED AND GRANULAR CHEMICALS



- Wheel driven spreading mechanism
- Wheels drive independently for uniform application, even on turns

- Can be operated behind tractor, truck or any vehicle with hitch at speeds from 3 to 10 mph.
- Spreading mechanism can be disengaged for towing at highway speeds
- Has all the performance features of the Lely HR

IN STOCK

GRUMELLI FARM SERVICE
RD 2, QUARRYVILLE, PA 17566
PH: 717-786-7318




MODEL "OH"



MODEL "MHL"

- Mueller-Matic® Automatic Washing System (Standard equipment on Model "OH" and optional on Model "MHL").

APRIL SPECIAL
Used 1000 Gal. Milkkeeper w/4 H.P. compressor and tank washer
\$3200

300 Gal. Mojonic **SOLD**
300 Gal. Girton

CAMERON'S REFRIGERATION and FARM SERVICE
RD 2, Port Royal, Pa. 17082
PH: 717-527-4795

AVAILABLE TODAY

USED EQUIPMENT:

JD 4430 Power Shift Tractor, Sound Guard Body, 20.8x38 Rear w/Weights	\$22,500.00
JD 5020 Tractor, Turbo Inter-cooler, New Engine	\$13,750.00
JD 4230 Tractor, 4 Post Roll-Guard, Quad Range	\$14,750.00
JD 2640 Tractor w/148 Loader	\$14,900.00
JD 2040 Diesel Tractor, 400 Hrs.	\$7,950.00
JD 2010 Tractor, R.C.	\$4,850.00
IH 1586 Tractor w/Cab, Air, 540-1000 RPM's, PTO	\$21,700.00
IH 656 Diesel Wide Front, Three Point	\$5,950.00
IH 460 Gas Tractor, New Tires, RX.C.	\$1,950.00
IH 240 Diesel Tractor, Fast Hitch	\$1,850.00
IH H w/Hydraulics	\$850.00
Steiger Cougar Model 251	\$49,850.00
IH #710, 5-16" Semi-Mount Auto Reset Hlow	\$2,850.00
New Holland 352 Grinder Mixer	\$2,650.00
New Holland 469 Haybine	\$2,650.00
New Holland 479 Haybine	\$2,750.00
JD 640 Rake w/Front Wheel	\$1,050.00

THE ABOVE IS A PARTIAL LIST OF OUR USED EQUIPMENT. PLEASE GIVE US A CALL IF WHAT YOU ARE LOOKING FOR IS NOT ON THIS LIST.

USED TILLAGE EQUIPMENT

John Deere KBA 28 Blade	\$375.00
Ford Flex Hitch 12'	\$650.00
IH 9' Wheel Carrier	\$650.00
Oliver Wheel Carrier 10'	\$850.00
Wilbeck 7 Shank Digger Disk (NEW)	\$5,950.00
Wilbeck 11 Shank Digger Disk w/Midwest Buster Bar	\$7,250.00
Taylor Way 20' Wing Fold w/Cushion Gang & Dual Wheels	\$7,250.00

USED PLANTERS:


John Deere 7000 Six Row 30" w/Dry Fertilizer, Monitor, Insecticide	\$8,750
Severall 1240 Plateless 4 Row	\$1,750 to \$2,550
AC 4 Row No-Till Air w/Dry Fertilizer, Insecticide, Monitor	\$4,850
JD 1250 6 Row 30" w/Dry Fert., Insect., DD Openers	\$3,250
JD 494A w/Dry Fert., Insect., DD Openers	\$850
JD 1250 6 Row 30" w/Insect., DD Openers	\$2,150
Ford 4 Row 3 pt.	\$650

EVERGREEN TRACTOR CO., INC.
30 Evergreen Rd., Lebanon, Pa. 17042
717-272-4641
STORE HOURS: Mon. Thru Fri. 7:30 AM-5 PM, Sat. 8 AM to 12 Noon
WE SERVICE WHAT WE SELL WITH FACTORY TRAINED MECHANICS


FFA competes in sports

LEBANON — The Cedar Crest FFA along with four other chapters, participated in a county FFA basketball tournament held March 1 at the Elco Middle School. Cedar Crest was defeated in the third game by Annville-Cleona who later went on to win the first place trophy.

The Cedar Crest Young Farmers won a five-game volleyball series over the Cedar Crest FFA on March 3. The Young Farmers took the series three to two with the fourth game deciding the title.



... its like Money in the Bank!



- COOLING PLATE:** Stainless steel patented Mueller Temp-Plate® Heat Transfer Surface.
- REFRIGERANT LINES:** Precharged stainless steel piping between inner and outer cooler walls.
- REFRIGERATION CONTROL SYSTEM:** HiPerForm, electronic -with many new features.
- PRE-START CONTROL:** Allows cooling and agitation before adding fresh warm milk into milk already cooled.
- ALARM CIRCUIT:** Five-inch red light with three warning modes.
- MANUAL BYPASS SWITCH:** For emergency cooling operations.
- DIGITAL DISPLAY:** Accurately indicates milk or wash water temperature.
- AGITATOR TIMER:** For agitating milk the required time before butterfat sample is taken.
- INTERVAL TIMER:** Automatic agitation at preset time interval.
- AUTOMATIC WASHING SYSTEM:** Efficient jet-tube cleaning with the Mueller Matic® Automatic Washing System.
- LEG SUPPORT BEAM:** Constructed with no metal-to-metal contact between inner liner and exterior.

Used Tanks Available
24 HOUR SERVICE
GEORGE M. PRIEST, JR. & SONS
RD 8, Box 142, Hagerstown, MD 21740
301-797-3921 or 301-733-6661