

DAIRY CATTLE SALE

All Weights and Breeds
Started Calves to Springers
Also Service Bulls

WEDS. APR. 6th 7:00 P.M.

"Your consignments are appreciated"
Let us know one week in advance, so we can advertise your cattle "free" on our Market Report Card.

Four States Livestock Sales Inc.

Just off I-70 or 81 Hagerstown, Md.
For information or a dependable trucker
Call 301-733-8120

**N.Y. STATE
CONVENTION SALE
60 REGISTERED GUERNSEYS
SATURDAY, APRIL 9, 1983
2 P.M.**

At Cobleskill Fair Grounds
Cobleskill, N.Y.

**New York State
Spring Classic
36 Head**

**New York State
Calf Sale
24 Calves**

A Truly Outstanding Group of Consignments for the New York Convention Sales at the Cobleskill Fairgrounds, Just Off I-88.

A Junior All-American Nominee, CRUM ELBOW LWD SNOW CRYSTAL, a Deacon daughter, Junior Champion, NYSF Junior Show; First Junior yearling, NY State Fair; 2nd NJS Harrisburg; 5th NGS Harrisburg From two generations of VG dams. Dam is HM Junior AA Three-Year-Old in '82. Julia Gilbert, Red Hook, NY.

ALSO FEATURING...

A Nobleman daughter scored 83 points @ 2Y with 16,898M in 326D, proj. 2Y 19,200M. Due in July to Skytop. Ripley Farm, Cortland, NY.

A Top Hornet bred heifer, a paternal sister to Smithfield Hornet Lavanna 1980 NYSF Grand Champion, due in May to Premier. Coon Brothers, Amenia, NY.

Three good consignments, including full sisters by Choice and a Deacon daughter. Nedrow Farms, Clifton Springs, NY.

Two bred heifers from Dick Church, Freeville, NY.

A promising Cyclone Daughter from Dennet Withington, Schoharie, NY.

Just fresh and selling is a Choice Two-Year-Old. Richard Hansen, Cherry Valley, NY.

Three bred heifers sired by Fayvor, Cyclone and Maverick Titus Brothers, Wyoming, NY.

Six consignments, including five cows and a bred heifer by Maverick, Choice and other sires. G. Harold Peck, Schuylerville, NY.

Bred heifers by Top Command and Billy that are due in June. Robert Holcomb, Greene, NY.

The Grand Champion of the State Fair in Rutland, VT sired by Superstar and a Choice daughter. Richard Tooley, Granville, NY.

New York State Calf Sale

Featuring calves by popular sires, such as Admiral, Big Tex and King Henry!

Two Telesar senior calves from Nedrow Farms, Clifton Springs, NY.

A Fortress daughter is consigned by Dennet Withington, Schoharie, NY.

Two heifers sired by Jupiter and Choice are sent by Stewart Parnell, Piffard, NY.

Two Admiral calves and a Fayvor daughter from Titus Brothers, Wyoming, NY.

Daughters by Choice are consigned by both Richard Hansen, Cherry Valley and Phil Jones, Arkport, NY.

Five heifers by King Henry, Big Tex, Jupiter, Telesar and Trailblazer. Lawrence Hooker, South Dayton, NY.

Heifers sired by Prince and Deacon Louie will sell. Robert Holcomb, Greene, NY.

A senior calf for 1983 sells from the Coon brothers, Amenia, NY by Jupiter.

A Fortress daughter from Richard Tooley, Granville, NY.

For sale catalogs contact:
Ed Townsend
4429 Sunset Drive
Syracuse, NY 13215
(315) 492-2578

Sponsored By
**THE NEW YORK STATE
GUERNSEY BREEDERS'
COOPERATIVE, INC.**

**2ND ANNUAL
PUBLIC CONSIGNMENT SALE**

**SATURDAY, APRIL 9, 1983
10:00 A.M. Sharp!**

Location: White Pine U.M. Church - From Williamsport take Rt. 15N to the top of Steam Valley Mountain, at Fry's Turkey Ranch take Rt. 184 to White Pine, Pa. Lycoming County.

TRACTORS AND FARM MACHINERY

I.H. Farmall H Tractor, I.H. Farmall A Tractor, International Heavy Duty Front End Loader, Oliver 3 Bottom Plows, C.I. Butchering Kettle & Ring, Lard Press, Locust Fence Posts, Wooden Butter Tub, Stanchion Yokes, "Truck Load of Tools", Pickup Load of Fire Wood, Timothy Hay, Honey, Plus Things Being Consigned Every Day!

The Nut & Bolt Man will be there with a big load of Nuts, Bolts, Screws and Nails.

Anyone with things to consign should call: Pete Vollman (717) 634-3161, Clyde Campbell (717) 634-2526 or Jack Quimby (717) 634-2394.

Lunch Stand By The Women of The White Pine U.M. Church

Auctioneers:

Perry L. Reed (717) 584-5254

David A. Yoas (717) 435-0448

"Commission Will Go To The White Pine U.M. Church Building Fund."

Church and Auctioneers Not Responsible For Accidents or Injury

LATE CONSIGNMENTS: 1975 Ford Mustang, 1975 Chevrolet Nova, 1974 Ford F350 12' stake body, New Holland 10' Fertilizer Spreader, Misc. Handles & Tools.

**PUBLIC
BANKRUPTCY
AUCTION**

**VALUABLE FARM &
FARM EQUIPMENT & GRAIN
STORAGE & HANDLING FACILITY**

Located along Martindale Road one mile from traffic light at Hinkletown and Rt. 322, Lanc. County, Pa. Real Estate to be offered at 10:00 A.M.

**MONDAY, APRIL 11, 1983
10:00 A.M.**

Real Estate consists of 57 acres M/L located in Ephrata Township, Lanc. County, Pa. Thereon erected a double farm house with seven rooms and bath in each section, also large bank barn suitable for app. 170 head feeder cattle, also grain storage and handling equipment including metal storage bins for 100,000 bushel, Matthew 900E grain dryer 400 Bu. per hr. capacity, 2-13 H.P. in bin dryers, 3-Ph. elec. service to most equipment, sheller and cob grinding facility.

Farm Equipment consists of the following items Case 4 row corn planter, Case 5 bottom plow, 430 Case tractor "needs repair", mix-mill hammer mill, New Holland 354 mixer, Massey Ferguson 720 Disc harrow, 8" transport auger 50' sprocket packer, 20' Melrath grain auger, 2 Hydraulic forage wagons, Hydraulic trailer, 3 hog feeders, corn stacker, 200 amp. Lincoln welder, acetylene welding unit, 3 office desks, office chairs, file cabinet, adding machine, electric typewriter, also various items not listed.

Sale by order of
BARRY A. SOLODKY,
Esq. Trustee in
Bankruptcy Case #82-04769
RE: John J. Snyder & Minnie Snyder
and T/D/B/A
Conestoga Valley Grain Company

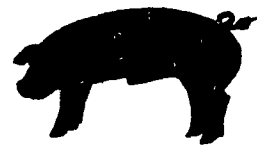
E.M. Murry Associates

287 Lime Rock Road
Lititz, PA 17543
Elmer Murry 626-5244 - 626-2636
Richard Murry 626-8175 - 949-2280
Ken Miller 665-2073
Professional Auctioneers
Appraisers and Advisors
Since 1953

Opportunities '83



**Club
Pig
Sale**



LOCATION: At the Winebark Farm - 8 miles South of Punxsutawney, Pa., 4 miles East of Rt. 119. Follow sale signs off Rt. 236 and Rt. 119, Indiana Co.

SATURDAY, APRIL 16, 1983

7:00 P.M.

**PUREBRED
BERKSHIRES**

**100
CROSSBREDS**

**PUREBRED
DUROCS**

PRIZE WINNING PROSPECTS
These bloodlines produced:

1979 - Farm Show Grand Champion Market Hog - Bob Bishop

1981 - Farm Show Grand Champion Market Hog - Michelle Bankert

County Fair Champions:

- Lancaster Co.
- Lawrence Co.
- Tioga Co.
- Somerset Co.
- Lebanon Co.

- Indiana Co.
- Fayette Co.
- Westmoreland Co.
- Cecil Co., Maryland
- Howard Co., Maryland

Farm Show Champions - the majority of the Berkshire and Duroc Bred Gilts have come from these herds!

Pseudorabies Free - Validated Herds

Clayton Winebark
RD 1, Rochester Mills, Pa.
Phone (412) 286-9806

Clyde McConaughy, Jr.
RD 1, Smicksburg, Pa.
Phone (412) 286-9671

No Pigs Sold Prior To Sale

PUBLIC SALE

**TWO IMPROVED AND ONE UNIMPROVED TRACT
OF VALUABLE REAL ESTATE**

Latimore Township Farms and Woodland

The Chester B. Worley Estate

THURSDAY, APRIL 14, 1983

At 1:00 P.M. Prompt

Sale will be held at the site located 2 miles North of York Springs along Business Route #15 formerly known as Worleys Fruit Tree Nursery in Latimore Township, Adams County, PA the following:

TRACT NO. 1

Containing 117 Acres, more or less, improved with a 1½ story and 1 story weatherboarded labor dwelling with all conveniences, except central heat; A large frame bank barn. First floor or barn maintained to grade and store nursery trees for shipment along with a fresh fruit cold storage room. Farm consists of 45 acres of cultivating ground, 8 acres of spotted bearing apple trees, 52 acres of pasture with creek running through and 14 acres of woodland with about half sawmill trees. Acreage has approx. 1½ mi. road frontage along two sides of business route #15 and 1 mile road frontage along 2 sides of New route #15. Erected thereon is a nice fresh fruit roadside market. Also has ½ mile road access frontage running crosswise of the above mentioned routes. Acreage & measurements mentioned are approximate.

TRACT NO. 2

Contains 116 acres, more or less, improved with a spacious 2½ story brick dwelling with a frame addition, having all modern conveniences except central heat. Outbuildings include a large frame bank barn newly built in recent years. First floor of barn maintained for winter tree storage. Other outbuildings include a frame utility shed along with other buildings. 99 acres of cultivating ground, 17 acres of woodland and approx. ½ mile of road frontage are a descriptive feature of this tract. Acreage & measurements are approximate.

TRACT NO. 3

Contains 26 acres, more or less, of unimproved land with 13 acres of cultivating area and 13 acres in large oak growing trees along with approx. ½ mile of road frontage. Acreage & measurements are approximate.

NOTE: All the above tracts listed are adjoining having improved road frontage. The tracts will be offered for sale separately. If looking for real good farming ground with unlimited potential do not pass up this opportunity.

INSPECTION - Phone: 717-334-2151, The Gettysburg National Bank, Trust Department, #10 York St., Gettysburg, PA 17325.

TERMS - ALL TRACTS - 10% when stricken down with final settlement in 30 days. Other terms will be announced at time of sale.

GETTYSBURG NATIONAL BANK

Administrator DBN, CTA of
The Estate of Chester B. Worley

CLAIR R. SLAYBAUGH, Auctioneer
Idaville, PA Phone: 717-677-7479
JOHN W. BEACH, Attorney
34 W. Middle St., Gettysburg, PA