

Livestock market and auction news

Carlisle Auction

Carlisle, Pa.
Tuesday, March 29
Report supplied by auction

CATTLE: Steers were 2.00 higher; Heifers were 2.00 higher; Cows were 3.00 lower and Bulls were 3.00 higher. Steers- Individual at 64.75; Good 57.75-61.00; Standard 50.00-55.00; Utility 48.50 down. Heifers- Individual 57.25; Good 53.00-55.25; Standard 50.75-53.75; Utility 49.00 down. Cows- Utility & Commercial 42.25-45.00; Cutter 39.75-43.00; Canner & Low Cutter 37.25-39.00; Shells 37.00 down. Bullocks- 49.00-54.00. Bulls- Yield Grade #2 52.00-53.00.

FEEDER CATTLE: Good run. Steers were 10.00 to 13.00 higher. Heifers were steady to 1.00 higher; Bulls were 9.00 higher. Steers- Choice 285-398 lbs. 70.00-72.00; Choice 300-555 lbs. 63.00-69.00; Medium 485-530 lbs. 55.00-60.00; Good 610-650 lbs. 60.00-63.00; Medium 685-735 lbs. 54.00-56.00; Medium 785-880 lbs. 51.00-53.50. Heifers- Choice 175 lbs. 85.00; Good 250-275 lbs. 57.00-60.00; -Medium 330-392 lbs. 51.00-52.00; Good 435-560 lbs. 55.00-56.00; Medium 410-490 lbs. 45.50-49.00; Good 495-575 lbs. 52.00-56.00; Medium 555-650 lbs. 47.00-48.50. Bulls- Choice 365 lbs. 67.00; Medium 400-460 lbs. 52.00-58.00; Medium 640 lbs. 53.00.

CALVES: Vealers- large run, Prime 128.00 to 135.00; Choice 90.00-118.00; Good 80.00-95.00; Standard & Good 60.00-80.00; Standard and Light 65.00 down. Farm Calves- Hol. Bulls 99.00-110.00. Hol. Heifers- 110.00-134.00.

HOGS: Large run; US No. 1-2 46.75-48.85; No. 1-3 44.25-47.00; No. 2-3 42.00-44.50. Sows- US No. 1-3 38.50-47.00; No. 2-3 38.50-40.00. Boars- Heavy 34.00-37.25.

FEEDER PIGS: US No. 1-3 30-31 lbs. 29.00-40.00 head; No. 1-3 34-37 lbs. 30.00-36.00 head; No. 1-3 38-40 lbs. 42.00-46.00 head; No. 1-3 41-45 lbs. 43.00-49.00.

SHEEP: Lambs- Choice to 68.00; Good 54.00-57.00. Goats- Family 62.00 head 27.00-41.00 head.

Westminster Livestock Auction

Westminster, Md.
Wednesday, March 29
Report supplied by auction

BUTCHER COWS: Steady prices. High Yield 46.25-49.00; Standard & Utility 42.00-46.00; Canners 39.00-42.00; Shelly 39.00 down. **BULLS:** Good to 56.25; Medium 48.50-50.75. **STEERS:** Good - Low Choice 55.00-59.00; Standard - Good 47.00-52.00. **HEIFERS:** Couple low Choice 55.00-57.25; Good 52.00-55.00. **BUTCHER HOGS:** US #1&2 215-

240 lbs. few to 49.00; US 1&3 220-260 lbs. 44.50-47.00, 1 lot US 1&3 276 lb. to 44.50; 1 lot US #3 285 lb. to 40.75. **SOWS:** Over 500 lb. few to 46.00; 350-450 lb. 38.50-43.50.

VEAL CALVES: Killers 80-100 lbs. 50.00-58.00; Weak & Rough 50.00 down.

CALVES RETURNED TO FARM: Holstein Heifers few 90-95 lb. 77.00-80.00. Holstein Bulls 95-120 lb. 70.00-88.00.

SPRING LAMBS: 20-40 lb. Choice 100.00-110.00; Good 80.00-100.00; 40-50 lb. Choice 87.00-95.00; Good 75.00-87.00; 60-90 lb. Choice 60.00-68.00; Good 55.00-60.00; 95-110 lb. Choice 65.00-68.00. Sheep- 15-35.00. Kid Goats- 20.00-38.00 per head.

STOCK CATTLE: STEERS: few good 65.00-70.00; Medium 60.00-65.00. **HEIFERS:** Good 52.00-56.00; Medium 47.00-52.00. **BULLS:** Good 55.00-60.00; Medium 50.00-55.00.

PIGS AND SHOATS: Steady prices. By the Head 15-30 lbs. 26.00-37.00, 30-60 lbs. 35.00-52.00. By the Lb. Stock Boars 225-280 lbs. 38.00-37.00.

Leesport Auction

Leesport, Pa.
Wednesday, March 30
Report supplied by PDA

CATTLE 246: Supply included 57 feeder cattle. Compared with last

Wednesday's market, slaughter steers steady to strong. Slaughter steady to strong. Individual Prime slaughter steer at 67.85, Choice 1000-1350 lbs. 64.10-66.85, individual yield grade #1 74.10; Choice 1230-1400 lbs. holsteins 57.00-57.60, Good 59.50-64.00, few 65.85, Standard 51.00-58.00, few Utility & Low Standard 46.00-50.00. Few Choice slaughter heifers 58.75-59.50, one Prime 65.50, few Good 52.00-57.35, few Standard 47.25-50.25. Utility & Commercial slaughter cows 43.50-46.25, few 49.10, Cutters 42.25-44.75, Canner & Low Cutters 39.00-42.50, Shells down to 31.50. Individual Choice slaughter bullock at 62.75, few Good 55.00-61.25, one 63.25, few standard 48.50-55.00. Yield grade #1 1285-1700 lbs. slaughter bulls 54.00-57.75, few #2 980-1145 lbs. 45.00-51.00. Few Medium Frame #1 390-435 lbs. feeder steers 71.50-72.50, lot #2 435 lbs. at 61.50, Large #2 325-625 lbs. 50.50-58.00. Few Medium Frame #1&2 370-685 lbs. feeder heifers 46.25-52.00.

CALVES 171: Few Choice vealers 103.00-111.00, one 120.00, Good 75.00-95.00, few Standard & Good 110-130 lbs. 62.00-76.00, 90-110 lbs. 55.00-59.00, 70-85 lbs. 48.00-57.50, few Utility 90-110 lbs. 50.00-55.00, few 65-85 lbs. 40.00-48.00. Farm Calves: Holstein Bulls 90-130 lbs. 60.00-91.00, mostly 75.00-86.00; Holstein Heifers 85-135 lbs. 87.50-

105.00. **HOGS 228:** Barrows and gilts steady. US No. 1-2 200-250 lbs. barrows and gilts 48.00-48.75, lot 49.25, No. 1-3 205-250 lbs. 47.00-48.25, No. 2-3 225 lbs. 45.00-45.50, few No. 1-3 135-195 lbs. 47.50-48.00. US No. 1-3 300-700 lbs. sows 43.00-46.75. Few Boars 41.00-43.00.

FEEDER PIGS 105: Few US No. 1-3 20-25 lbs. feeder pigs 135.00-140.00 per hundredweight, few No. 1-3 45-50 lbs. 118.00-129.00, lot No. 1-3 65 lbs. 100.00 Cwt.

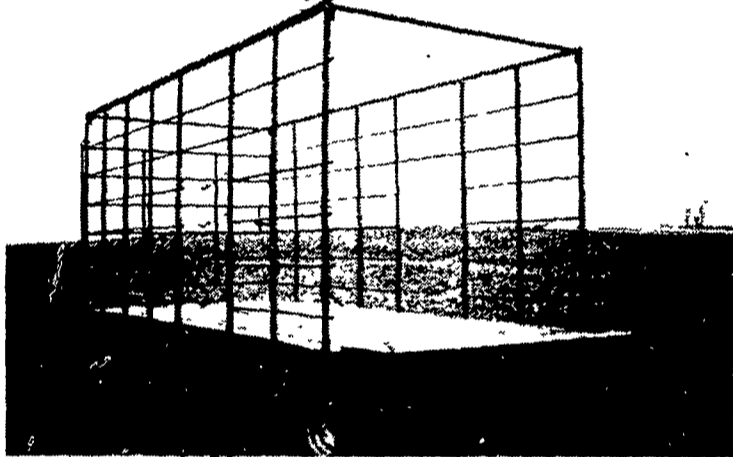
Sheep 404: Choice 20-40 lbs. spring slaughter lambs 95.00-136.00, 40-50 lbs. 75.00-92.00, 50-85 lbs. 72.00-89.00; Good 20-40 lbs. 79.00-90.00. Few Choice 60-100 lbs. woolled lambs 62.00-71.00, few Good 65-70 lbs. 46.00-59.00. Slaughter ewes 10.00-24.00.

GOATS 70: Large Adult 26.00-41.00 per head, one 57.50, Small Adult 18.00-29.00; Large Kids 29.00-48.00 per head, Small Kids 18.00-29.00 per head.



HAY WAGONS FOR SALE

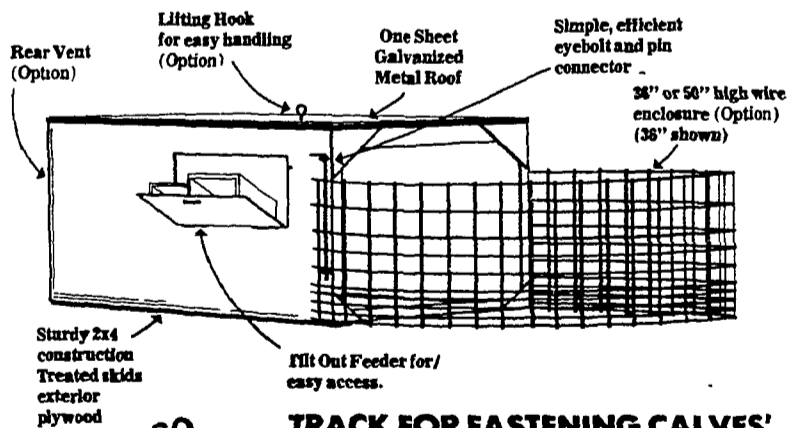
Wood or Steel



3 Sizes Available...16', 18', 20'
with or without running gear

• Also will fit sides onto your flat wagon

Compare the Stoltzfus Woodwork Calf Hutch



ALSO AVAILABLE:

TRACK FOR FASTENING CALVES' CHAIN TO CEILING OF HUTCH

Maryland:
LEROY HILDEBRAN
Woodsboro, Md.
301-845-8929

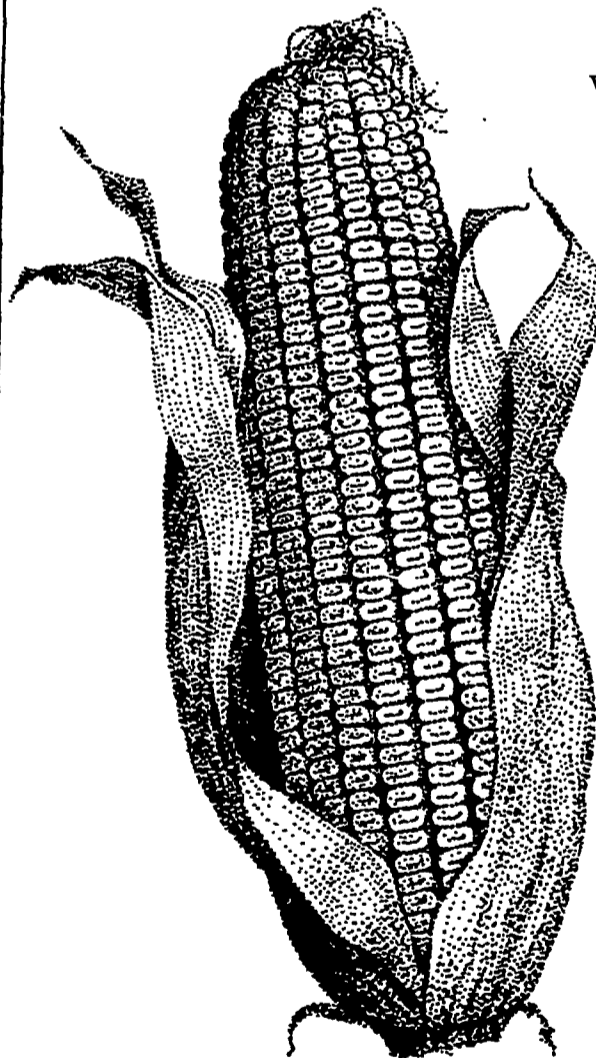
Lebanon County:
UMBERGER'S MILL
Rt. 322, RD#4 Lebanon, Pa.
717-867-5161

Berks County:
JOE RUTH
RD #4133 Fleetwood, Pa. 19522
215-944-7571

Lancaster County:
JOHN L. LANDIS
1801 Colebrook Rd.
Lancaster, Pa. 17601
717-898-7689

MFD. BY: **STOLTZFUS WOODWORK**
RD 2, Box 2280, Gap, PA 17527
717-442-8972

Good growing winners.



We're proud of the way these winners did in the National Corn Growers Association Yield Contest. Congratulations.

New Jersey Winners

1st place Class A: Rustin Farms
E. H. Tindall
Trenton, NJ
XL-71 209.0 b/acre

2nd place Class A: Thomas G. Kanach
Flemington, NJ
XL-71 195.7 b/acre

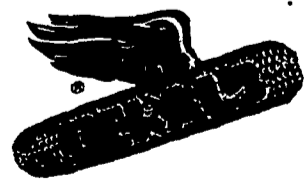
(In New Jersey, DEKALB brand hybrids took four of the top five places.)

Pennsylvania Winners

1st place Class A: Jeffrey Mitchell
Honey Brook, PA
XL-71 194.35 b/acre

1st place No-Till: Jeffrey Johnson
Orefield, PA
XL-57 171.85 b/acre

Plant a winning hybrid this year.



DEKALB-PFIZER GENETICS

PLEASE CONTACT YOUR LOCAL DEKALB-PFIZER GENETICS DEALER

"DEKALB" is a registered brand name. Numbers designate hybrids. As a condition of sale, please note statement of limited warranty and remedy on DEKALB-PFIZER GENETICS orders and tags.