



Berks County DHIA Monthly Report

February 1983

OWNER	BREED	NO. COWS	% DAYS IN MILK	LBS. MILK	LBS. FAT
Charles & Tim Kissling	3	68.7	86.4	21,122	832
Heinzel Farms Inc	3	28.6	87.7	19,856	797
Plushanski Farms Inc	3	111.2	87.7	21,058	773
Stephen J. Janos	3	32.4	89.7	20,087	749
Mertz Brothers	B3	46.4	84.9	20,190	734
Mark A. Wolfskill	3	94.5	83.6	19,413	697
Ken & Robin Wolfskill	B3	45.8	86.0	18,696	689
Junge Farms	3	61.3	86.2	18,482	689
Forrest C. Stricker	B3	59.3	85.7	18,312	682
Reu Hel Farms Inc	3	48.9	87.2	19,152	681
Zahncroft Farm	3	48.8	85.3	18,097	679
George S. Troutman Jr	B3	67.1	89.3	18,649	669
Donald B. Duncan	B3	103.2	85.0	16,884	668
Ralph & Ken Sanner	B3	70.7	86.9	18,399	662
Kenneth H. Wenger	B3	71.2	87.6	19,323	662
Good Bros	B3	63.0	87.3	18,746	661
Robert E. Kopfer	B3	45.3	90.2	18,420	656
David L. Schrack	B3	104.7	86.0	16,518	656
Irvin G. Weaver	G3	45.8	88.1	18,298	656
Mervin Brubaker	B3	68.2	86.6	18,506	654
George Schuler	3	53.1	86.2	18,000	653
Bendy Brook Farm	3	49.9	83.1	18,990	650
Ray E. Bicksler	3	46.9	88.7	16,896	649
Richard A. Bleiler	B3	56.6	88.0	19,453	646
Yost Brothers	B3	114.2	88.1	17,810	638
Heindel Farms Inc	1	24.2	84.2	15,183	636
Roger S. Buch	3	48.1	83.7	17,502	636
Clarence B. Kulp	3	67.6	85.8	17,339	635
Glenn R. Harnish	B3	84.7	87.0	17,915	635
Gary L. Kurtz	4	5.8	89.9	11,892	633
William G. Howerter	3	87.9	88.6	17,139	630
Leroy E. Howard	B3	138.5	89.6	17,494	630
George E. Moyer	3	93.3	85.4	16,463	629
Swatara Dairy Farm	3	82.0	83.0	15,605	623
Vista Grande Farm	3	82.1	87.4	17,254	623
Martin Moyer	B3	49.5	82.3	16,537	622

R. Bernell Burkholder	B3	41.2	86.2	16,541	622
Fred J. Walters	B3	68.4	85.5	16,944	621
Red Fever Farm	B3	62.1	87.0	16,591	620
Lynnacres	3	140.4	88.7	16,872	618
R. R. Troutman & Sons	B3	112.8	85.8	17,645	617
Tulpa Canal Farm	B3	32.9	89.1	17,010	616
Scattered Acres Inc	B3	138.2	82.2	17,085	616
F. M. Browns Sons Inc	B3	93.1	87.5	18,377	616
Show Top Farms	3	147.9	88.9	16,714	613
Mat Mar Farms Inc	3	85.6	87.7	16,792	613
Harold Fenstermaker	3	34.5	88.4	15,626	612
Barry L. Burkholder	B3	48.9	82.8	17,549	612
Arlan Krick	B3	67.0	90.1	16,169	611
Frank G. Gromlich	3	58.3	86.6	16,235	610
Ernest O. Miller	B3	193.5	85.2	16,988	610
William C. Adams	3	92.8	88.2	15,460	610
Daveview Farm	3	59.0	85.0	16,572	609
Wilmer Dreibelbis	3	54.5	87.4	16,808	609
E. Daniel Leatherman	B3	65.9	87.6	17,417	605
Larry L. Mertz	B3	90.0	89.7	16,596	604
Retland Farm	3	48.0	88.6	16,757	604
Harvey C. Krill Jr	B3	50.3	89.1	16,153	603
Ontelynn Acres	B3	113.0	85.6	15,915	602
Linden Loch Holstein	3	57.3	86.3	16,256	602
Andrew D. Stoltzfus	B3	150.0	83.9	16,675	600
Kenneth Zook	B3	43.1	87.2	18,633	599
Richard W. Hoppes	3	58.0	86.5	15,942	598
Ray W. Seidel	B3	34.5	88.2	15,774	597
Ker Min Farms	3	77.4	88.7	16,250	596
Don Aloan	B3	44.4	82.7	15,851	595
Ridge Crest Farms	B3	38.9	87.1	16,365	595
Alton Rohrbach	B3	46.3	87.3	15,858	595
Harold Schuler	3	31.8	84.4	16,366	595
Marlin J. Stutzman	B3	59.4	91.7	15,425	594
Lawrence Kieffer	B3	70.6	86.1	18,249	594
Lynn E. Stoudt	B3	60.1	82.4	17,122	594
Robert L. Sattazahn	B3	100.2	87.1	16,510	593
Raymond A. Seidel	3	34.0	86.3	16,520	592
David J. Williams	B3	41.0	85.0	16,350	592
Robert T. Bowman	B3	44.8	84.0	16,677	591
Udder Valley Farm	B3	72.8	86.1	15,730	591
Wilmer Hurst	B3	49.1	83.5	14,824	591
Pinnacle View Dairy	B3	49.2	87.7	15,981	590
Raymond B. Nolt	B3	79.9	85.2	16,234	589
B & K Grimes	B3	104.4	88.3	14,958	589
Glenn B. Gockley	B3	40.0	87.8	16,243	589
Paul B. Martin	B3	55.5	83.8	17,574	589
Pine Brook Farm	3	101.6	85.8	15,564	588
Charles W. Lamm	B3	92.6	86.3	16,192	587
Way Har Farms	B3	111.2	86.1	16,787	586
Leonard G. Stoltzfus	3	43.5	92.3	18,719	582
Donald Burkholder	G3	89.7	86.8	15,813	581
Robert C. Dreisbach	4	76.9	84.1	12,937	581
Ronald L. Richard	3	45.6	84.3	16,791	580
Ernest C. Hoffman	3	54.4	88.8	16,006	580

Nathan Nolt	B3	52.3	84.9	15,833	577
Win Dale Farm	8	46.5	88.7	11,646	576
Floyd Kurtz	B3	43.8	85.3	16,723	576
Bruce D. Cammauf	B3	19.5	78.1	16,455	576
Roy Hoppes	B3	39.1	83.3	15,293	574
Blue Mtn Academy	B3	118.8	88.2	17,144	574
Carl E. Hollenbach	2	55.7	81.7	12,686	574
Herb Top Farms	B8	27.3	85.5	15,189	574
Meadow Spring Farm	B3	37.9	80.7	15,361	572
Lester Burkholder	B3	90.3	87.7	15,903	571
Wilson M. Balthaser	B3	70.1	85.1	15,494	569
Leon Sensenig	B3	55.1	85.9	16,089	568
Robert Yanos	G3	60.6	87.6	15,272	567
Merlin J. Grube	B3	38.5	87.9	14,750	566
Tom Wexley	B3	92.3	86.3	15,347	565
Charles W. Wagner	B3	44.8	88.4	15,733	565
William Mitchell	G3	31.3	88.0	15,560	565
Clyde Loump	B3	55.1	87.3	15,322	563
Daniel J. Harnish	B3	92.3	84.6	15,799	561
Mark & Debra Johns	3	42.6	89.0	15,415	560
Clarence C. Sattazahn	B3	92.8	89.3	16,046	559
Arthur D. Schlappich	B3	59.8	85.1	15,559	559
Harvy M. Weaver	G3	50.3	82.1	15,431	558
Tim Kleinsmith	B3	35.8	85.1	17,581	557
Charles D. Moyer	B3	116.5	81.5	15,413	557
Hylark Farm	3	81.6	87.4	14,792	557
Ken & Debra Dietrich	B3	40.0	83.6	15,859	553
David Y. Knauer	B3	53.0	83.3	15,217	553
Russell H. Haas	G3	52.1	87.3	15,717	552
Wilmer Dreibelbis Jr	B3	54.8	83.0	16,409	551



NEED SOMEONE WHO CAN FILL THE SHOES?

Try A Help Wanted Ad In Classified.

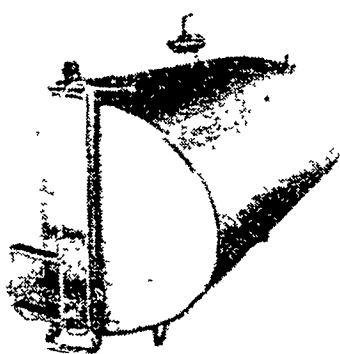
Phone: 717-394-3047 or 717-626-1164

De Laval Dairy Automation

COMPARE DE LAVAL®

New Century™

Series of Bulk Coolers For Performance, Quality, Value

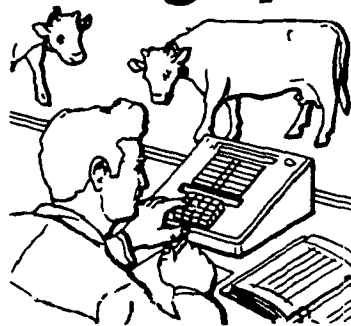


600 to 5,000 Gallon Capacity
The efficient cooling Bulk Tank
Backed by a Century of Service
to America's dairyman



Call for a Free Estimate

RationMaster™ Feeding System

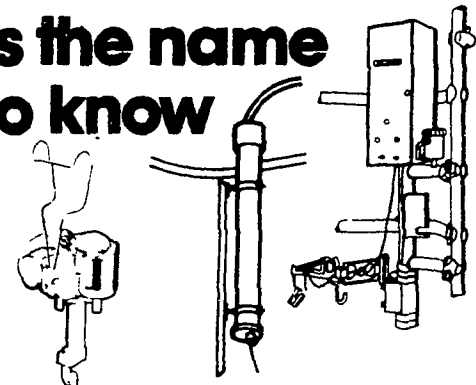


De Laval technology enables you to place the dairy herd's grain feeding program under computer control. With the RationMaster Feeding System, each cow gets only the concentrate needed for optimum milk production. Components include neck-worn transponders... single-stall feeding stations where grain is dispensed automatically... and a Computer Command Center where a micro-processor stores and retrieves data on individual animals.

Reduced labor, more milk, less wasted feed, healthier cows, and shortened calving intervals are typical benefits. Let us explain more about the RationMaster Feeding System — Module One of the advanced De Laval® HerdMaster™ Management System.



De Laval is the name to know



If you're thinking dairy automation there's just one name you need to know: De Laval. For over 100 years dairymen world-wide have depended on De Laval products to keep their dairies running smoothly and profitably. You can too. Check these De Laval® automation products, all designed to make your milking easier. Then check with us. We've got full details on these fine products and the whole line of De Laval dairying equipment & accessories.

- DV-300™ milker — rugged milker feature, automatic shifts of vacuum levels and pulsation rates
- A.R.M.™ devices — Automatic Removal Mechanism features parallel linkage support arm "Armless" model also available.
- Autocord™ removal device — the affordable way to automate milker removal.



SEE YOUR LOCAL DE LAVAL DEALER

PENNSYLVANIA

BURCHFIELDS, INC.

Railroad St., Martinsburg, PA
814-793-2194

ERB & HENRY EQUIP., INC.

New Berlinville, PA
215-367-2169

FRANKLIN D. HESS FARM EQUIPMENT

RD 2
Orangeville, PA
717-925-6939

I.G.'s AG SALES

Silverdale, PA
215-257-5136

PEOPLES SALES & SERVICE

Oakland Mills, PA
717-463-2735

R. E. SMELTZER EQUIPMENT CO.

R.D. 1 Box 253,
Centre Hall, PA
814-364-1419

WITMER IMPLEMENT SERVICE

RD 3
Shippensburg, PA
717-532-6139

J. B. ZIMMERMAN & SONS

West of Blue Ball, PA on Route 23
717-354-4955
815 E. Main St.
Annaville, PA
717-867-5143

NEW JERSEY

G. HIRAM BUCHMAN, INC.

Rte. 519 N. off Rte. 46
P.O. Box 185
Belvidere, NJ
201-475-2185

S. JOHNSON HURFF

RD 2 (Pole Tavern)
Monroeville, NJ
609-358-2565
609-769-2565

VAN AKEN DAIRY SUPPLIES

RD 2, Box 177, Heddy Rd.
Columbus, NJ
609-298-3344

DELAWARE

BENNETT MACHINE CO.

1601 South Dupont Blvd.
Millford, Del.
302-422-4837

MARYLAND

CECIL DAIRY SERVICE

RD 1 - Rt. 274
1/2 Mi. South Rising Sun, MD
301-658-6923

LEHMAN DAIRY SERVICE

RD 3, Box 150,
Downsville Pk.
Hagerstown, MD
301-582-1735