

Livestock market and auction news

Friday markets not available due to holiday

St. Louis Auction

Thursday, March 31
Report Supplied By USDA

Receipts This Week 4700
Week Ago 4700
Year Ago 5600

Compared to the previous week, slaughter steers and heifers mostly 2.00 higher. Cows 1.00 higher. Bulls fully steady. Slaughter supply mainly Choice and Choice and Prime slaughter steers, around 35% Heifers and 10% Cows.

SLAUGHTER STEERS: Mixed Choice and Prime 2-4 1050-1275 lbs. 65.00-66.00, Closing 65.50-66.00, Package 1095 lbs. Late 66.75. Choice 2-4 950-1300 lbs. 64.00-65.50, Closing Sales 64.50-65.50. Mixed Good and Choice 2-4 900-1225 lbs. 62.00-64.50. Good 2-3 900-1175 lbs. 60.00-62.50. Standard to Good 2-3 1050-1300 lb. Holsteins 50.00-58.00.

SLAUGHTER HEIFERS: Mixed Choice and Prime 2-4 875-1100 lbs. 63.00-64.00, closing 63.50-64.00. Choice 2-4 800-1050 lbs. 61.50-63.50, Closing Week Sales 62.00-63.50. Mixed Good and Choice 2-3 800-1000 lbs. 59.50-62.00. Good 2-3 750-1000 lbs. 57.50-60.00.

COWS (Closing Week Sales) Utility and Commercial 2-4 41.00-46.00. Boning Utility 1-2 46.00-47.00. High-Yielding Utility 1-2 47.00-48.00.

CUTTER: 1-2 40.00-45.00. Canner and Low Cutter 1-2 35.00-40.00.

BULLS: YG 1-2 1100-1900 lbs. 48.00-54.00. Few YG 55.00.

Wednesday weekly Sheep Auction. Receipts about 300 head. Compared last Wednesday, slaughter lambs weak to 2.00 lower. Light supply slaughter ewes 2.00-3.00 lower.

SPRING SLAUGHTER LAMBS: Small Choice and Prime 88 lbs. 74.50.

SHORN SLAUGHTER LAMBS: Few lots Choice and Prime 88-120 lbs. With No. 1-2 Pelts 64.50-65.00.

WOOLED SLAUGHTER LAMBS: Few lots Choice and Prime 100-110 lbs. 60.00.

SLAUGHTER EWES: Small lots and individual head Utility and

Good 13.00-19.00.
FEEDER LAMBS: Few lots Choice and Fancy 68-93 lbs. 47.00-54.00, Mostly 48.00-50.00.

ewe AND LAMBS PAIRS: Lot 6 head good solid-Mouth ewes with bay lambs at side 33.00 per ewe.

FEEDERS: (including around 1,600 at the regular Thursday Auction.) Feeder steers weak to 3.00 lower, mostly 1.00-2.00 lower. Feeder Heifers weak to 1.00 lower. Overall quality not as attractive as last week, due to an increased percentage of medium frame mixed 1-2 and small frame 1 fleshy offering. Large buyer attendance.

FEEDER STEERS: Medium Frame 1: 325-500 lbs. 70.00-77.00, mostly 70.75-74.75; 525-575 lbs. 66.25-69.25; 600-700 lbs. 65.00-66.50; 700-875 lbs. 61.50-64.00.

Medium Frame 1-2 and small frame 1: 350-725 lbs. 62.00-69.00; mostly 63.00-66.50.

LARGE FRAME 2 HOLSTEINS: scattered lots 475-675 lbs. 50.00-55.00, lot 757 lbs. 47.50.

FEEDER HEIFERS: Medium frame 1: couple lots 250-280 lbs. 64.50-66.00; 300-500 lbs. 59.00-64.25; couple lots thin reputation 460-490 lbs. 65.25-67.25; 500-700 lbs. 57.50-62.00.

Medium Frame 1-2 and small frame 1: 350-650 lbs. 53.50-59.75, mostly 55.00-58.00.

Dewart Auction

Dewart, Pa.

Monday, March 28

Report supplied by PDA

CATTLE 212. Compared with last Monday's market, slaughter steers steady. Slaughter cows \$1-\$2.50 higher. Choice 1050-1400 lbs. slaughter steers 61.00-63.85, one at 65.00, few Good holsteins 54.50-56.75, few Good 57.00-60.00, Standard 50.10-54.25. Few Choice slaughter heifers 60.25-63.60. Utility & Commercial slaughter

cows 42.50-47.25, Cutters 41.00-43, Canner & Low Cutters 38.50-41. Yield Grade #1, 950-1650 lbs. slaughter bulls 49.50-54.85, few down to 43.00. Large Frame #2, 430-700 lbs. feeder steers 56.00-59.50. Few Medium Frame #1 375-535 lbs. feeder heifers 52.00-56.00.

CALVES 244. Few Choice vealers 97.00-106.50, few Good 80.00-93, Standard and Good 70-105 lbs. 53.50-60.00. Farm Calves: Holstein Bulls 90-125 lbs. 66.00-96.00, mostly 75.00-92; few Holstein Heifers 85-130 lbs. 75.00-98.00.

HOGS 278. Barrows and gilts \$1.50-\$4 lower. US No. 1-2 2-230 lbs. barrows and gilts 49.50-50.80. No. 1-3 210-235 lbs. 45.00-48.10, No. 2-3 275-290 lbs. 42.90-44.75, one lot No. 1-3 175 lbs. at 46.00. US No. 1-3 300-700 lbs. sows 42.50-49, Medium 270-380 lbs. 39.00-42.00. Boars 37.50-40.00.

FEEDER PIGS 84. US No. 1-3 20-35 lbs. feeder pigs 35.00-41 per head, No. 1-3 (few) 45-55 lbs. 48.50-49.50 per head, lot No. 1-3 85 lbs. at 54.50; lot No. 1-3 90 lbs. at 58.00 per hundredweight.

SHEEP 58. Choice 18-46 lbs. spring slaughter lambs 85.00-100, few to 113.00, 80-85 lbs. 75.00-85.00. Slaughter ewes 11.00-20.00. **GOATS 40:** Large Goats 25.00-40 per head. Kids 12.00-32.00 per head.

Four States Livestock

Hagerstown, Md.

Wednesday, March 23

Report supplied by auction

SLAUGHTER: Fed Steers - \$1.00 lower. Choice 59.00-60.00; Good 55.00-58.00; Medium 54.00 Down. Heifers Choice 55.00-56.25; Good 50.00-54.00; Medium 49.00 Down. Cows \$1.00 under last week. High Yield 44.50-47.25; Average 41.00-44.00; Big Middle 38.00-40.00; Fatty Herf. 37.00-39.00; Shelly 38.00 down. Fat Bulls Individual at \$58.00. Good 52.00-55.00; Medium 48.00-51.00. Veal Calves \$2.00 higher. Choice 96.00-107.00; Good 85.00-95.00; Medium 75.00-84.00; Farm Hfrs. to 75.00; Farm Bulls to 97.00; Light & Weak \$50.00 down. Lambs Higher prices, few light weights, 80.00-92.50; Choice 64.00-66.00; Good 60.00-63.00; Medium 59.00 down.

STOCKER: Steers 300-550 lbs. Good run steady prices. Choice 69.00-73.00; Good 62.00-68.00; Medium 56.00-61.00; Culls 55.00 Down. Steers 600-850 lbs. Choice 64.00-68.00; Good 59.00-63.00; Medium 58.00 Down. Heifers (All weights) Choice 62.00-68.50; Good 52.00-61.00; Medium 51.00 Down. Bulls \$3 higher. Choice 65.00-74.00; Good 56.00-64.00; Medium 55.00 Down. Dairy Cows to 600.00. Springing Heifers to 685.00; Pigs, Hd. Steady to lower. 20-30 lbs. 23.00-41.00; 40-60 lbs. 42.00-50.00. Shoats by Lb. to 44.50. Slaughter Hogs \$3.00 under last week. 220-230 lbs. 46.50-47.75; 240-260 lbs. 46.25-47.50; 190-210 lbs. 44.25-46.50. Sows 350-575 lbs. 43.00-48.75.

East Coast Carlot

Wednesday, March 30

Report supplied by USDA

Compared to Tuesday's close: Prime special fed veal trading moderate, generally steady with last test. Good and Choice boning veal trade light, inshipped veal steady to 2.00 lower than last test. Lamb lightly tested, steady to weak undertone indicated. Boneless beef lightly tested, 85% chem lean 5.00 higher than last week.

VEAL CARCASS

Prime (Special Fed)

Hide On 215 Head

220-280 lbs. 195.00, generally steady with Mon.

Good & Choice

Boning Type

Hide On

Northeastern Suppliers no sales reported: 65-75 lbs. 88.00-90.00, all steady to 2.00 higher; 55-64 lbs. 86.00-88.00; 45-54 lbs. 84.00-86.00; 35-44 lbs. 82.00-84.00; 34 lbs. down 80.00-82.00.

Inshipped: 71-80 lbs. 90.00-92.00, all steady to 2.00 lower than Monday; 61-70 lbs. 88.00-90.00; 51-60 lbs. 86.00-88.00; 41-50 lbs. 84.00-86.00; 30-40 lbs. 82.00-84.00.

LAMB CARCASS

Choice & Prime 3-4

1/2 Load

60 lbs. down 142.00, part load. **BONELESS BEEF (US & Canadian Origin)**

2 Loads

85% Chem Lean Fresh 121.00, compared to last week 5.00 higher.

CURED AND PROCESSED MEATS

No sales reported.

Valley Livestock

Valley Stockyards

Athens, Pa.

Monday, March 21

Report supplied by auction

Total No. of head 556. Holstein Hfr. Calves to 112.50; Veal Calves to 107.50; Vealer Bull Calves 79.00-97.50; Slaughter Calves 47.00-62.50; Grassers & Feeders 42.00-60.50; Lambs 28.00-59.00; Easter lambs to 127.50; Sheep 9.00-18.00; Hogs, 200-250 lbs. 45.00-49.00; Sows 41.00-47.50; Boars 34.00-40.00; Pigs each 27.00-40.00; Heifers 39.00-50.00; Steers, feeder 40.00-54.50; Bulls 44.50-50.50; Cows, utility 41.50-48.00; Cows, fat 42.00-44.50; Cows, medium 38.00-42.00; Cows, poor or small 35.00-39.00; Cattle market stronger; Calf market very active & higher; Horses to 280.00; Goats per head 23.00-48.00; Hay to 85.00.

Carlisle Spring Lamb and Goat Sale

Carlisle Livestock Market

Carlisle, PA

Friday, March 25

Report supplied by auction

Total headage: 1419 head - Trend: very active bidding with strong demand for spring lambs and small goats.

SPRING LAMBS (807 head) 10-15 lbs. up to 210.00; 20-29 lbs. Choice 137.50-150.00, Good & Standard 135.00 Down; 30-39 lbs. Choice 130.00-145.00, Good & Standard 129.00 Down; 40-49 lbs. Choice 115.00-127.50, Good & Standard 125.00 down; 50-59 lbs. Choice 90-109.00, Good & Standard 87.50 down; 60-69 lbs. 75.00-80.00; 70-110 lbs. 70.00-120.00.

GOATS (533 head) All sizes; head price: 10.00-58.00.

WOOLED LAMBS (24 head) All weights; Choice 55.00-62.00, Good 54.00 down.

SHEEP (55 head) all weights; Choice 54.00-60.00, Good & Standard 54.00 down.



COME ON YOU GUYS... MOVE OVER!
NEED MORE ROOM?
Read The Real Estate Ads
In Lancaster Farming's
Classified Section

FRIDAY, APRIL 15 ON THE FARM MONTHLY BRED GILT SALE

Sale to Start Promptly at 1:00 Every 4 Weeks

Located 18 miles south of Lancaster, Pa., 6 miles south of Quarryville, take Rt. 272 to Little Britain, turn north, follow Little Britain Road to Jackson Road, 2nd farm, OR take Rt. 222, out of Quarryville to Cedar Hill Road to Little Britain Road to Jackson Road. Watch for sale arrows.

50 to 60 Head

Now selling our new hybrid gilts representing mostly York & Hampshire & Landrace cross. Bred for easier & less trouble over farrowing and better weight gains.

Validated Brucellosis Free Herd #169
Qualified Pseudorables Free Herd #55

Local Trucker Available
No Hogs Sold On Commission

CHRIST A. BEILER

R.D. 2, Quarryville, Pa

JOHN B. STOLTZFUS

R.D. 1, Kirkwood, Pa

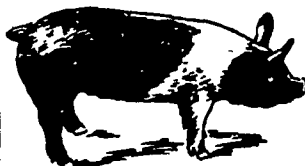
Abe Diffenbach, Auctioneer

NEXT SALE DATE MAY 13

ONE STEP TRANSIT
JOHN STAUFFER
RD3 Box 233 Elizabethtown, PA 17022
717-257-3875

Providing expert care and cleanliness for your cattle by gooseneck

LOCALLY or NATIONWIDE



EMERY'S BUYING STATION

OPEN TO RECEIVE YOUR MARKET HOGS

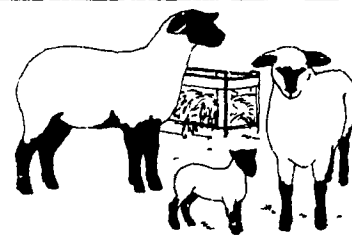
AT THE GREEN DRAGON MARKET
RD 4, EPHRATA, PA 17522
1 MILE NORTH OF EPHRATA
ON NORTH STATE STREET.

HOURS
MONDAY, TUESDAY, and WEDNESDAY
6:00 A.M. to 11:30 A.M.

215-458-5677 Residence
717-733-9648 Office

YOU ARE PAID FOR YOUR HOGS IMMEDIATELY

Ken & Lois Emery, Proprietors



EWES FOR SALE

Replace with High Quality Yearling Western Ewes

that will:

- Improve Prolificacy
- Provide Greater Hardiness
- Develop Faster Growing Lambs

Delivered ready for dispersal at \$90/hd. Ewes will be gate cut, weighing 90-110 lbs.

Terms: **CASH** — Deliveries Guaranteed

Serious Inquiries Only: 717-569-7857 Evenings
703-886-9379 Evenings