

PARSELLS FARMS POTATO AND GENERAL FARM MACHINERY AUCTION

TUESDAY, APRIL 5, 1983
10:00 A.M.

(blizzard date: Fri. Apr. 8)

WELLSBORO, (TIOGA CO.) PENNSYLVANIA

Auction to be held at the farm located on rte. 660, 5 miles southwest of Wellsboro, toward the Grand Canyon. Watch for auction arrows at the intersection of rtes. 6 and 660 in Wellsboro, or at intersection of rtes. 6 and 362 app. 15 miles east of Galetton, Pa.

Discontinuing farming to pursue other business interests, selling without reserve, the following full line of machinery and tools!

TRACTORS: 3 I.H. wide front diesels all with 38 in. rubber - 1256 with 3 pt. hitch; 826 with 2 point hitch; 706 with 2 point hitch; all gear driven! Also Farmall "M" with power pack, 4 valve live hydraulic, power steering and recent engine overhaul; Case LP unloader with bucket; Clark LP forklift with two stage, 4000 lb. cap. lift; Hough HA payloader, as is; J.D. 112 riding lawn tractor.

POTATO FARM AND WAREHOUSE EQUIPMENT: Dahlman model ST pull type harvester, p.t.o. driven, hydraulic vibrator, stone box, etc.; Seem Line 2 row windrower with steerable axle and steerable tongue; 2 Haines 16 ft. bulk bodies; Haines 14 ft. bulk body; J.D. 416 planter with dry fertilizer hoppers and Gandy applicator boxes; 2 J.D. 30 level bed diggers, 1 with boom type stone picker attachment; Haines bulk truck loader with conventional 40 ft. swing boom and 26 in. grader picking table; Haines 6 x 8 ft. bulk hopper; Haines 6 x 6 ft. bulk hopper; Haines 16 ft. scissor type hopper elevator with 16 in. wide belt; Haines 26 in. wide draper chain conveyor, 12 ft. long; Diltz-Wetzel spool type seed cutter; Haines barrel type seed treater; Haines 36 in. washer with 10 brushing rolls and 8 drying rolls; Haines 26 in. brusher; Haines 26 in. roller picking table; Haines 26 in. and 21 in. eliminators; 42 ft. long and 40 ft. long by 12 in. wide flat belt conveyors; Haines double and Haines single bagger; Haines 18 ft. scissors type bag elevator with pleated rubber belt; Haines 35 ft. trailer unloading elevator with dolly; 44 ft. unloading elevator with dolly; 20 ft. bulk seed loader; bin loader with 28 ft. boom; homemade packoff round table; Yale 3000 lb. cap. battery operated hand pallet jack; Syracuse platform scale with over-under head; Detecto portable over-under produce bagging scale; 2 bin fans; various salamander type heaters; quantity of new "Pennsylvania Growers" 50 lb. and 20 lb. paper bags; bulk body gasoline unloading motors; 1 new roll of J.D. 30 digger chain; etc.!

GENERAL EQUIPMENT AND IMPLEMENTS: 235 ton 12 ft. wet holding grain bins with tapered bottoms; Little Giant 55 ft. 8 in. model BD65 p.t.o. driven portable auger; GT-370 p.t.o. dryer; Friend 40 ft. hydraulic boom sprayer with 3 yrs. old 500 gal. stainless steel tank on 38 in. rubber; R.C. 90 model "Tilther" tractor rototiller; I.H. 45 19 ft. vibrashank with wings and midwest levelers; I.H. 560 6-16 semi-mount plow; 20 ft. van body with side door and roll up rear door; J.D. 4-row tool bar; Maine Style 4-row cultivator; 14 ft. gear driven bulk fertilizer body; 3 section spike tooth harrow; set of vine lifters; Holland 2-seat 1-row strawberry planter; I.H. 18 h.p. stationary power plant with hand clutch and gear reduction; Ford 3 pt. 2-row cultivator; 500 gal. steel water tank; 4 row 3 pt. weeder; 3 pt. clod buster; 2 hydraulic dump farm trailers; farm wagon with flat bed; 8 ft. Graham plow; I.H. 37 12 ft. transport disk; Woods 4 ft. rotary mower; Dunham Lehr hydraulic front tractor loader; I.H. 64 pull type combine with scour clean; homemade heavy duty dozer blade; 10 ft. 6 in. grain auger with hopper; qty. of I.H. front and rear tractor weights; app. 4 ton of bagged 0-0-60 Cramers York fertilizer; app. 12 ton of bulk 15-8-12 fertilizer; etc.!

TRUCKS: 1971 Mack F model, full twin screw, 237 engine, 5 sp. transmission, 10:00 x 20 rubber, sleeper cab, engine recently overhauled; 1967 Trailco 40 ft. insulated van trailer on 20 in. rubber; 1979 Ford F-150 pick-up, 4 x 4, 6 cyl., 4 sp. standard; 1967 Ford F-600 cab and chassis with aux. trans.; 1952 Reo Army truck, 6 x 6 single rear tires, standard trans., with aux. trans.; 1953 Ford F-750 flat bed.

SHOP TOOLS AND MISCELLANEOUS: Lincoln 130 amp portable welder-generator; Forney 180 amp. welder; 1 h.p. compressor; shop wood heat stove; acc. torch outfit; roll a round metal tool box; Buffalo drill press; 1 h.p. bench grinder; floor jack; hand and power tools; bolts index with qty. of new bolts; belt pulley for an "M" tractor; portable water pumps; qty. of truck and implement tires; 8 ft. pick-up cap; double compartment pick-up fuel tank; 275 gal. skid tank; qty. of telephone poles; GT grain moisture tester; platform scales; 2 4-drawer steel file cabinets; steel kneehole desk; Regency commercial FM 20 watt base station with 3 mobile units; many unlisted items!

250 ACRE FARM FOR SALE AT PRIVATE TREATY: Completely remodeled 8 room house with 1½ baths, full basement, 2 car attached garage, 20 ft. x 40 ft. inground pool, new kitchen, wall to wall carpet and many specials! Farm shop with office; 60 x 80 ft. clear span warehouse; 42 x 100 ft. warehouse; 48 x 80 ft. warehouse with 30 x 40 ft. packing shed; Additional acreage (500 plus) locally available for rental. Land stone picked and practically all suitable for potato harvester! Contact owners!

SALE ORDER: Shop tools first at 10:00 A.M. sharp!; General equipment at 11:30 followed by tractors and trucks; potato and warehouse equipment at app. 1:00! Lunch available at sale site! Loading dock on farm!

PRIVATE AIRCRAFT ACCOMMODATIONS: Grand Canyon Airport operated by the Commonwealth of Pennsylvania is adjacent to the farm!

Terms: Cash or good check day of auction! Proper identification required! Nothing to be removed until settled for in full!

Owned by
MR. AND MRS. STANLEY PARSELLS
717-724-5622 or 717-724-5672.

For machinery information phone 717-724-2876 or 717-724-5672 and ask for "Fay".

AUCTION CONDUCTED BY PIRRUNG AUCTIONEERS. Contact Jerry Pirrung at Ulysses, Pa. at 814-848-7421 or James Pirrung at Wayland, New York at 716-728-2520.

**PIRRUNG AUCTIONEERS ARE SPECIALISTS IN THE SALE
OF POTATO FARM MACHINERY!**

PUBLIC SALE

INVENTORY REDUCTION
TUESDAY, MARCH 29

10:30 A.M.
GUS FARM EQUIP.
(M.F. DEALER)
Seven Valleys, Pa. - York Co.
USED COMBINES

1 - 510 D. w/air, Cab & Grain; 1 - 510 D. w/Cab & Grain; 1 - 525 Oliver w/2 Row Corn Head 10 ft. G.; 1 - 45 John Deere w/Cab & Grain; 1 - 205 IHC w/2 Row & Grain.

USED PLANTERS
2 - 5400 White No-Till 4 Row; 1 - 1240 J.D. 4-38"; 1 - 400 IHC Cyclo No-Till; 2 - 494A J.D. 4 Row; 1 - 56 IHC 4 Row; 1 - 540 Oliver 4 Row; 1 - 5100 White Six Row w/Liq. Fert.

USED MISC.
1 - Papec Grinder Mixer; 2 - N. Holland 410 Lime Spreaders; 1 - 52' Cardinal Grain Elevator; 1 - J.D. 4 Row Cult.; 1 - BMB Rotary Mower; 1 - Coop Grain Drill; 1 - New 2 Row Mtg. Corn Picker w/Oliver Mtg.; 1 - Ford 2 Row Mtg. Picker w/IHC Mtg.; 1 - Oliver #4; 1 - IHC 2 Row Cult.; 1 - IHC 4 Row Cult.; 1 - J.D. 4 Row Cult.; 1 - Broy Hill Sprayer.

USED BALERS & HAYBINE
1 - IHC #46; 1 - M.F. #12; 1 - M.F. #81 Haybine; 1 - M5MM Diesel.

USED TILLAGE
1 - 560 IHC 6 Bottom Plow; 1 - IH 4 Bottom Pull Plow; 1 - J.D. 3 Bottom Pull Plow; 1 - Oliver 2 Bottom Pull Plow; 1 - M-M 3 Bottom Mounted; 1 - Oliver 5 Semi Mounted; 1 - J.D. 110 Transport Disc; 1 - IHC 300 23' Harrow w/hyd. & wings; 1 - IHC 10' Transport Disc; 1 - IHC 2 Bottom Plow; 1 - Oliver 271/25 Ft. Folding Disc 25 Ft.; 1 - J.D. 2 Bottom Pull Plow.

USED FORAGE
1 - Fox 2310 w/Corn Head; 1 - IHC 50 Forage Harvester; 1 - N.H. #8 Forage Box; 1 - N.H. #29 Blower; 1 - Kools Blower; 1 - Kools KB 2000 Grinder Blower; 1 - N.H. 841 1 Row Corn Head; 1 - Papec Blower w/pipe; 1 - New 200 M.F. Harvester & one Row Head; 2 - J.D. 125 Covered Chuck Wagons.

AUCTIONEER'S NOTE: Some items will be added & others deleted due to Daily Business - Commission items accepted prior to sale day.

TERMS: CASH OR GOOD CHECK.
Financing Available Subject to Credit Approval.

GUS FARM EQUIP.

Seven Valleys, Pa.
Ph. 717-428-1967

AUCTIONEER: Blaine N. Rentzel
Emigsville, Pa.
Daytime: 764-6412
Evening: 266-1671

PUBLIC SALE

OF FARM EQUIPMENT &
HOUSEHOLD GOODS
WEDNESDAY, MARCH 30
AT 10:00 A.M.

Located between Bowmansville and Fivepointville, just off Pleasant Valley Road. Watch for sale signs.

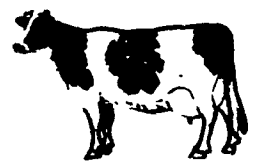
J.D. 4620 SR, W.F.E., Side Console, New 20-8x38 Tires; 52 Ford 8N Tractor; 10' Chisel Plow; 12' J.D. #110 Disc Harrow; 10' Cultipacker; J.D. 1440 4-row No Till Plateless Corn Planter, Fert. & Insecticide Hoppers; J.D. 60 PTO Silo Blower; NH Haybine; #50 IH Harvester; 2-row Corn Head & Pickup Attach; Oliver #13 Disc; Grain Drill; J.D. 12' Fert. Drill; Gravity Flow Grain Bin; Better Bilt Vac. Liquid Manure Spreader 3150 Gal., w/Soil Injectors; New Idea Manure Spreader; N.H. 24' Bale Elevator; Stauffer Forage Wagon on J.D. Running Gear; Sauder Manure Loader; PTO Generator on Trailer; Pony Cart; 3-pt. Lift, Hyd. Post Driver; 3-pt. Rotary Mower; Flail Chopper; 3 pt. Sprayer; 9" Silo Pipe, 14' Badger Silo Unloader; Hyd. Log Splitter on Wheels; 300 Gal. Skid Tank; 2 Wheel Cattle Lick Tank; 8 Hole Hog Feeder; Calf Stalls; Steel Gates; Surge Breaker Cups, Shells & Elec. Pulsators; 30 Milk Cans; Stainless Steel Surge Milk Bucket w/Lid; Sev. Hundred Tons Corn Silage; Pony & Horse Saddle; 1973 CHEVY CAPRICE, 4 dr.; 20' Bale Conveyor; 6"x6"x34' Log; Butcher Block; HOUSEHOLD GOODS: Hotpoint Elec. Stove; Hotpoint Refrig.; Chest Freezer; 3 Coal Stoves; 250 Glass & Plastic Gal. Jugs & Jars; Clay Pots; Ice Cream Freezer; Meat Grinders; Odds & Ends of Lumber; Some Inside Doors; Odds & Ends of Furniture; Other Items not Mentioned. ANTIQUES: Iron Kettle & Stove Combination; Sausage Stuffers; Marble Top Scales; Weight (all sizes); Indian Door; Window Panes; Claw Foot Piano Stool; Picture Frames; Door Knobs & Latches; 2 Gas Lamps; Carriage Lantern; Oil Lanterns; Green Glass Canning Jars; Bottles; Large Chest; 7' Dove Tailed 2 Compartment Chest; Flat Top Knee Hole Desk; 2 Shawls; Cream Separator; Milk Strainer; Other Items Not Mentioned.

TERMS BY:

**MONROE W. & MIRIAM M.
GOOD**
215-445-4272

Elton & Alvin Horning, Auctioneers
HORNING FARM AGENCY, INC.
Main St., Morgantown, Pa. 19543
LUNCH AVAILABLE

SHORT NOTICE DAIRY HERD AUCTION



30 HOLSTEINS — 400 GAL. BULK TANK
BARN EQUIPMENT
THURSDAY, MARCH 24, 1983
at 12 Noon

For Daniel Janosa, 3½ miles S.E. of Mt. Bethel, Pa. 9 mi. E. of Banger, Pa. From Pa. use Rt. 22-78 to Easton, PA. take 611 North to Martins Creek, Pa. then take Belvidere Martins Creek highway to Riverton, Pa. at Riverton Hotel, turn N. just before bridge continue to 1st. stop sign then make sharp right up hill and at next stop sign turn right continue to 2nd road on left (Belvidere Corner Rd.) take that Rd., 2nd farm on left. Arrows posted from Riverton Hotel. Farm is sold! 3½ miles N. of Belvidere, N.J.

12 Noon - 400 gal. Girton Bulk Tank (holds 430 gal.), Surge Alamo 6 unit pump 4 yr. old, 4 DeLaval milkers, 34 Jamesway stanchions and 17 water cups.
12:30 30 Hi Grade Holsteins - 9 hd. fresh recently, 12 hd. bred from 6 to 8 mos., many handling. Some bred for fall. 1 heifer bred 6½ mos. Mostly all home raised. A owner operated dairy. Many large bodied well developed cows that will produce a lot of milk. Many individuals with well attached udders. Individual Pa. health charts! For replacements or additions attend this sale! Not responsible for accidents.
Terms - Cash or Good Check with proper I.D. Full payment sale day! No Lunch counter! Blizzard Date Mar. 25.

Owner
DANIEL JANOSA
717-897-6660

Sale conducted by: Mel Manasse, Whitney Point, N.Y.
and Col. Fred R. Daniel apprentice, Neshanic Sta., N.J. 201-369-4784
TB & Blood Tested for Interstate Shipment
Pregnancy Examined
(Farm Sales are our Specialty)