

Quality & Special Prices

from **GVM**
INCORPORATED

Distributors of:

Blend Plants and
Conveyors
Polyethylene Tanks
Dry Spreaders and
Tenders

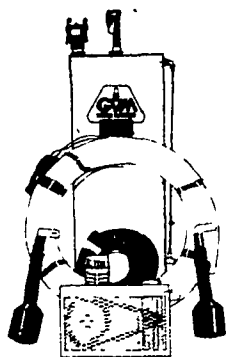
Sprayer Parts and
Accessories
Liquid Metering Systems
Hi-Boy Sprayers

Manufacturers of:

Pull-type Sprayers
Nozzle Alerts
GPA Meters - Total Gal
Meters

Foam Markers
Nozzle Check Valves
Electric Boom Pressure
Gauge

GVM "FOAM MARKER"



Features:

- Cab or tractor mounted control box
- Hose, fittings and blobbers included
- 12 volt motor and piston compressor
- 22 gallon horizontal or 30 gallon vertical tank (40 gallon extra)

Mark your swath with the dependable GVM FOAM MARKER. Ideal for use on sprayers, spreaders or no-till planters

SPECIAL PRICE \$1060

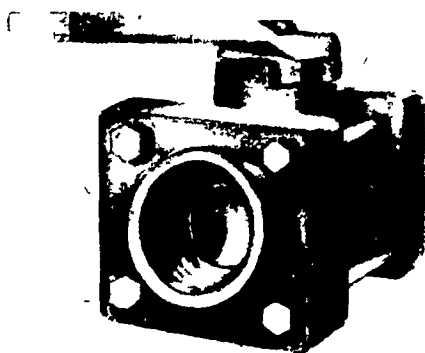


INCORPORATED

P.O. Box 358
Biglerville, PA
17307

(717) 677-6197

POLYPROPYLENE VALVES



SPECIAL PRICES

- 1 1/2" full port - \$22.00
- 2" full port - \$29.00

**Special Prices
in Effect
Mar. 12 thru
Mar. 26**

Weekly Summary

Friday, March 18

Report supplied by PDA

Markets: 16.

CATTLE: 6979. Compared with 6332 head last week, and 6504 head a year ago. Compared with last week's market: Slaughter steers strong to 1.00 higher; Sl. heifers steady to 1.00 higher; Sl. cows 1.00-2.50 higher; Sl. bullocks, small supply uneven; Sl. bulls unevenly steady to 1.00 higher. Sl. steers: High Choice & Prime No. 3-4, 66.00-69.50; Choice No. 2-4, 61.00-67.00; Good 58.00-62.00; Standard 49.00-57.50. Sl. heifers: Choice 57.50-62.85; Good 53.00-59.00; Standard 48.00-54.00. Sl. cows: Utility & Commercial 42.50-47.00, few to 49.00; Cutters 40.00-44.75, few 46.50; Canner & L. Cutter 36.50-41.00, few 44.00; Shells down to 25.00. Sl. bullocks; Choice 58.50-61.25; Good 54.00-59.75; (few) Standard 50.00-54.50. Sl. bulls: Yield Grade No. 1, 1000-2200 lbs. 49.00-58.75; Yield Grade No. 2, 900-1500 lbs. 46.00-53.50.

FEEDER CATTLE: Steers, (few) Medium Frame No. 1, 300-700 lbs. 53.00-69.00. Heifers, Large Frame No. 1, 400-700 lbs. 53.50-62.00; Large Frame No. 2 350-700 lbs. 50.00-57.50. Medium Frame No. 1, 300-700 lbs. 47.50-58.00, few to 65.50. Bulls few Med. Frame No.1, 400-600 lbs.

CALVES: 4043. Compared with 3902 head last week and 4052 head a year ago. Vealers strong to 5.00 higher. (few) Prime 114.00-135.00; Choice 95.00-118.00; Good 80.00-96.00, few to 100.00; 110-130 lbs. 65.00-85.00; 90-110 lbs. 54.00-62.00; 65-90 lbs. 45.00-56.00; Utility 50-110

lbs. 35.00-48.00; few down to 10.00.

FARM CALVES: active. Hol. Bulls 80-130 lbs. 50.00-104.00, mostly 60.00-90.00; Hol. Heifers 85-140 lbs. 57.00-130.00, mostly 70.00-96.00. Beef Cross Bulls & Heifers 70-110 lbs. 60.00-100.00.

HOGS: 8124. Compared with 7292 head last week and 8360 head a year ago. Barrows and gilts 1.00-1.50 lower. US No. 1-2 200-245 lbs. 51.00-52.50, few 54.00; No. 1-3 200-250 lbs. 50.00-51.50; No. 2-3 200-285 lbs. 48.00-51.00; No. 1-3 140-190 lbs. 45.00-49.00; Sows unevenly steady. US No. 1-3 300-600 lbs. 46.00-52.00, few to 52.75; No. 2-3 300-750 lbs. 40.00-47.50. Boars 39.00-45.00.

FEEDER PIGS: 831. Compared with 949 head last week and 632 a year ago. Mostly 2.00-5.00 higher. US No. 1-3 20-35 lbs. 28.00-45.00; No. 1-3 35-50 lbs. 45.00-55.00; No. 1-3 50-80 lbs. 55.00-63.00 per head.

SHEEP: 1240. Compared with 882 head last week and 757 head a year ago. Woolled sl. lambs uneven; Spring sl. lambs to the Easter trade mostly strong to 10.00 higher. Choice 20-40 lbs. spring lambs 100.00-141.00, 40-65 lbs. 75.00-99.00; 65-100 lbs. 70.00-86.00; Good 40-80 lbs. 61.00-80.00; Choice woolled lambs 70-120 lbs. 59.00-75.00; Good 60-105 lbs. 52.00-65.00. Sl. ewes: 14.00-29.00.

3 GRADED FEEDER PIG SALES: 1734. Compared with 2517 head last week, and 1507 head a year ago. All sales by CWT. Feeder Pigs highly uneven, extremes 12.00 higher to 12.00 lower. US No. 1-2 20-40 lbs. 136.00-166.00, few to 190.00, 40-50 lbs. 118.00-143.00, 50-60 lbs. 99.00-126.00, 60-70 lbs. 89.00-110.00; US No. 2-3 30-50 lbs. 112.00-140.00, few to 156.00.

(Turn to Page A34)



— A FULL LINE IN STOCK —

- * Storm-Proof Ridge Ventilators
- * Snuggers - Cam-Latch
- * GRID-15 Doors

TREATED TIMBERS &
T/G DECKING IN STOCK

Telephone: (717)866-6581



MANUFACTURERS of
LAMINATED RAFTERS
and WOOD ROOF TRUSSES

RD1, Box 189A, RICHLAND, PA 17087

**THIS IS OUR
25th ANNIVERSARY
1958 - 1983**

25 Years of Quality
Products & Service

**FABRAL
CORPORATION**

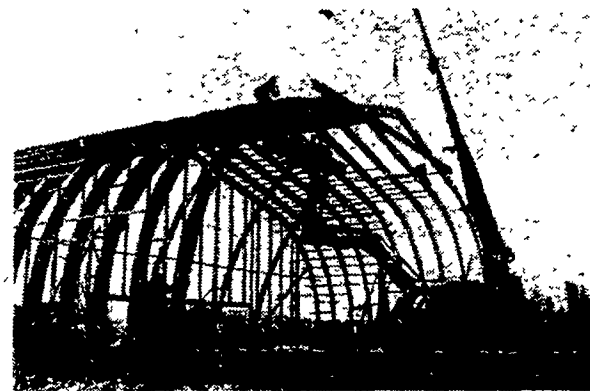
**ROOFING, SIDING & ACCES.
IN STOCK**



70' CLEAR SPAN HORSE BARN

Clear Span pole type bldg. trusses built to help utilize space by having post free interior.

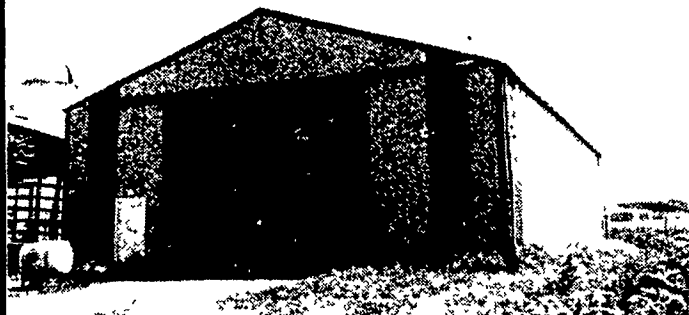
CRANE SERVICE



86' CLEAR SPAN HORSE BARN

Special design for high clearance on side walls.

This type of Laminated Arch allows for over-head storage & second floor storage. Laminated arch distributes forces to foundation also eliminates knee braces on interior walls.



46'x80'x16' Lancaster County
Equipment Storage & Shop

