

Livestock market and auction news

Oklahoma Cattle

Thursday, March 17

Report supplied by USDA

Estimated Receipts 1200
Same Day Last Week 1083

Limited sales Feeder Steers and Heifers steady to weak in clean up type of trade. Majority receipts Medium Frame 1 and Mixed 1-2 440-700 lb. Feeder Steers and 350-600 lb. Feeder Heifers. Actual auction receipts for Wednesday cattle auction 12,409 head.

FEEDER STEERS: Medium few Large Frame 1 255-400 lb. 76.75-82.00; 400-500 lb. 71.75-75.50; 500-600 lb. 70.25-74.30; 600-700 lb. 70.30-71.00; lot 747 lb. 69.80; 800-920 lb. 65.10-66.40. Small Frame 1 600-660 lb. 67.60-67.70. Medium and Large Frame Mixed 1-2 325-385 lb. 73.10-75.75; 400-475 lb. 70.90-75.00; 720-765 lb. 66.75-66.80; package 913 lb. 61.30. Medium and Large Frame 2 package 395 lb. 70.25; 420-475 lb. 63.10-65.20. Large frame 2

Holsteins small lot 433 lb. 60.20; 562 lb. 55.40; 654 lb. 54.10; 922 lb. 54.00.

FEEDER HEIFERS: Medium and Large Frame 1 265-285 lb. 66.75-67.00; 325-385 lb. 65.10-66.50; package 455 lb. 63.40; 575-600 lb. 61.10-63.30; package 683 64.00; 761 lb. 61.25. Small Frame 1 few 410-520 lb. 59.50-60.10. Medium and Large Frame Mixed 1-2 350-420 lb. 57.50-57.75; 515-775 lb. 55.80-56.60.

FOR THE WEEK: Compared to late last week Feeder Steers under 800 lb. .50 to 1.50 higher; over 800 lb. mostly 1.00 lower. Feeder Heifers under 500 lb. averaged about steady; over 500 lb. mostly 1.00-2.00 higher. Slaughter Cows closed 1.00-2.00 higher with mid- and late week sales Utility and Commercial 2-4 43.50-47.00, package high-dressing 50.00; Cutters 1-2 41.40-44.20. Slaughter Bulls closed weak to 1.00 lower. Salable receipts this week totaled around 24,200 head compared with

21,034 head last week and 36,132 head last year. The majority of receipts consisted of Feeder Steers and Heifers; Cows and Bulls made up six percent of salable supply.

Leesport Auction

Leesport, PA

Wednesday, March 16

Report supplied by PDA

CATTLE 274. Compared with last Wednesday's market, slaughter steers 75 cents to \$2 higher. Slaughter cows \$1 to \$2 higher. Few High Choice & Prime 1300-1450 lbs. slaughter steers 64.00-65.60, one at 67.00, Choice 1000-1200 lbs. 62.50-64.85, holsteins 1240-1500 lbs. 57.00-60.85, Good 58.75-63.00, Standard 54.85-57.00, few Utility & Low Standard 45.25-50.50. Few Choice slaughter heifers 58.00-58.75, few Good 55.00-57.25, few Standard 45.00-51.75. Utility & Commercial slaughter cows 43.00-46.50, few to

48.25, Cutters 41.00-43.85, few to 44.50, Canner & Low Cutter 38.00-41.25, Shells down to 33.00. Few Choice slaughter bullocks 59.00-62.75, one at 65.10, few Good 55.75-59.75, few Standard 53.00-56.25. Yield Grade #1 1200-1935 lbs. slaughter bulls 56.00-59.50; few yield grade #2 1000-1200 lbs. 51.75-54.75. One lot Large Frame #1 500 lbs. feeder steers at 70.50; few Large Frame #1 and #2 475-555 lbs. feeder heifers 53.50-56.00; few Large Frame #1 500-900 lbs. feeder bulls 52.25-58.00.

CALVES 123. Vealers strong to \$5 higher. Few Choice vealers 102.00-118.00, Good 82.00-100.00, few down to 70.00, few Standard & Good 110-125 lbs. 66.00-93.00, few 90-110 lbs. 53.50-61.00; 70-85 lbs. 48.00-55.00, few down to 45.00, few Utility 90-120 lbs. 48.00-53.00, 55-75 lbs. 30.00-41.00. Farm calves, holstein bulls 95-125 lbs. 75.00-89.00, some down to 65.00, few 80-95 lbs. 52.00-62.00; holstein heifers 95-125 lbs. 65.00-96.00; few beef cross bulls & heifers 80-105 lbs.

68.00-88.00.

HOGS 298. Barrows & gilts \$1.25 to \$1.75 lower. US No. 1-2 215-240 lbs. barrows & gilts 50.50-51.00, few to 52.10, No. 1-3 195-265 lbs. 49.00-50.50, few down to 48.00, few No. 2-3 250-290 lbs. at 48.00, one lot No. 1-3 150 lbs. at 45.25. Sows steady to strong. US No. 1-3 300-600 lbs. sows 45.75-50.25, few Medium 370-430 lbs. 44.50-45.50. Few Boars 41.00-43.00, few light weights 46.00-49.00.

FEEDER PIGS 76. One lot US No. 1-3 27 lbs. feeder pigs 132.00 cwt., one lot No. 1-3 47 lbs. 144.00, one lot 65 lbs. 101.00, one lot No. 1-3 123 lbs. 64.00 cwt.

SHEEP 189. Choice 25-40 lbs. spring slaughter lambs 110.00-123.00, 40-50 lbs. 49.00-106.00, 50-60 lbs. 84.00-98.00, few 70-75 lbs. 81.00-83.00, Good 20-30 lbs. 104.00-107.50; few Choice 95-100 lbs. wooled slaughter lambs 67.00-69.00. Slaughter sheep 14.00-29.00.

GOATS 24. Few Large Adult Goats 49.00-59.00, Large kids 30.00-44.00, small kids 15.00-27.00.

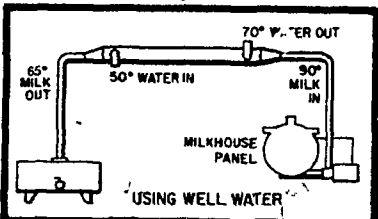
(Turn to Page A33)

SAVE ENERGY SAVE MONEY



Agway offers everything you need to cut cooling, milking and hot water costs to the bone!

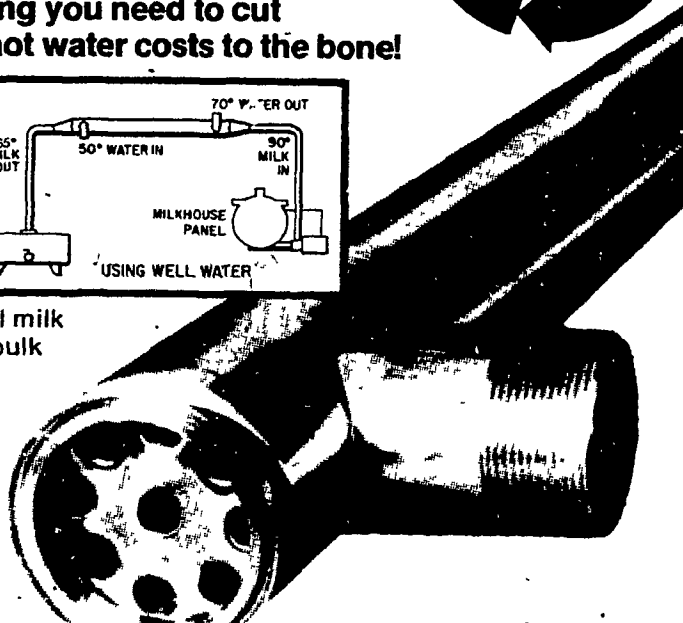
TOPLINE MILK PRE-COOLER



- uses well water to pre-cool milk 20° to 25° before it hits the bulk tank
- fits any pipeline system
- works with any bulk tank
- cleans in place
- 20' series PC-9 (47-2152)

Reg. \$1,689.00

\$1539⁰⁰

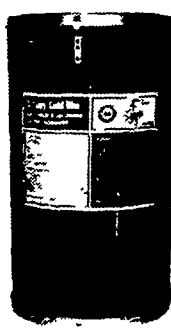


AGWAY SALVAGER™ HEAT RECLAIMER

- captures waste refrigerant heat to produce 120° to 145° water
- stores up to 119 gal of hot water
- for use with existing air or water cooled compressors (47-2163)

Reg. \$1255.00

\$1155⁰⁰



AGWAY COLD WAR™ PIPELINE CLEANSER

- new formulation cleanser permits use of water at starting temperature of only 120° F (as opposed to 160°)
- drastically cuts hot water costs when used in conjunction with Agway Salvager plus cold-water sanitizing and final rinse

Reg. \$135.50

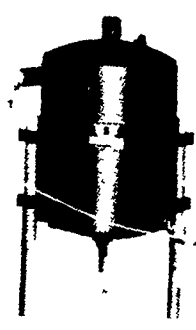
100 lb drum

OIL RECLAIMER

- saves oil and increases vacuum pump efficiency for longer life
- fits all big "U" 3, 5, 7½ and 10 hp pumps (47-1720)

Reg. \$335.00

\$299⁰⁰



Prices do not include installation and are good through:

NO NEED TO BUY, LEASE IT!

No big initial investment when you lease through Telmark Agri-Lease. Check Agway for details.



INSTALLED AND SERVICED BY AGWAY
All Agway Installation and Service people are well trained, well equipped, and backed by complete parts inventories for fast repairs.

Oxford 215/932-9361 Eighty Four 412/222-0600 Winfield 717/523-1204 Temple 215/929-5264 Lebanon 717/273-2621 Lancaster 717/394-0541

Blairsville 412/459-7830 Somerset 814/445-4184 Pleasant Gap 814/359-2722 Dublin 215/249-3556 Carlisle 717/243-4312

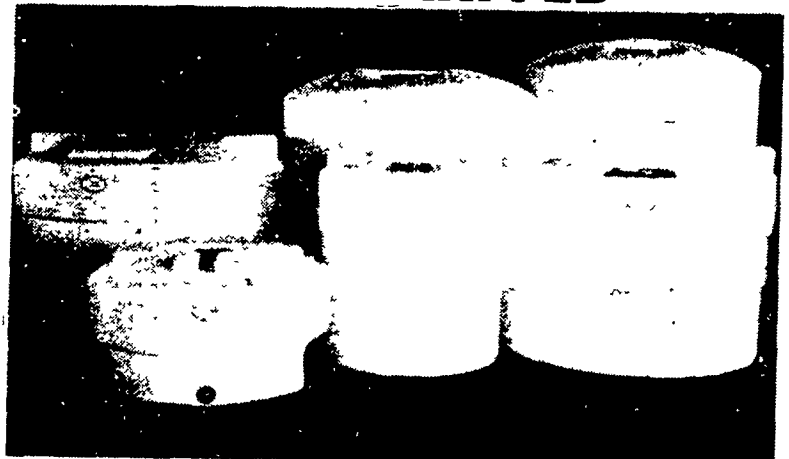
Wysox 717/265-9131 New Milford 717/465-3139 Chapman 215/395-3381 York 717/792-2674 Butler 412/482-2195
Chambersburg 717/263-4197

AGWAY answers your needs



PAUL B. Zimmerman INC.

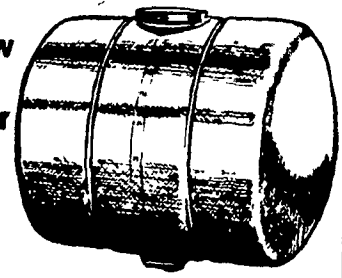
A Railroad Car of DURA-LIFE™ TOUGH POLYETHYLENE TANKS JUST ARRIVED



• SPRAYER TANKS - for new or replacement

• STATIONARY TANKS - for liquid fertilizer storage

ALL SIZES AVAILABLE FROM 25 GAL. to 2,000 GAL.



We also stock a complete line of:



Sprayer Nozzles & Accessories

Hyprow® Pumps & Accessories

Sprayer Hose

Ball Valves

Nylon Fittings

YOUR COMPLETE HEADQUARTERS FOR SPRAYERS & PARTS

PAUL B. ZIMMERMAN, INC.

Hardware • Farm Supplies
Custom Manufacturing
Crane Service

Box 128 R.D.#4, Lititz, PA 17543
Wood Corner Rd.
1 Mile West of Ephrata
Phone: 717-738-1121