

FARM EQUIPMENT

FARM EQUIPMENT

**Dismantling Combines for parts over 150 all makes and models. Call before you come.**

IH 64, 76, 80, 82, 125, 127, 141, 101, 151, 91, 93, 203, 303, 403, 205 & 815. JD 12 A, 25, 30, 40, 45, 55, 95, 105. AC 60, 66, Gleaner A, C, CII or L. MF Clippér, 26, 27, 70, 80, 90, 72, 82, 92, 35, 300, 410 & 510. Oliver 33, 35, 40, 430, 525 & 545. Ford SP & pull. 701 NI Uni tractor, NI Uni - 705D (ear corn unit), combine & shellers, Case 800 & 660, 600.

**TRACTORS**  
 NH Tank Spreader \$375  
 MF Super 90 D w/loader & hyd. bucket  
 AC G tractor w/plow & R cultivator  
 2 Farmall M's, \$975  
 Ford 9N, motor gone over, new paint, step-up transmission  
 Farmall 300 utility, fully equipped  
 Farmall c w/cult. and plow  
 Farmall H  
 Ford 8N w/rotary cutter, \$1500  
 AC D17 w/3 pt., \$1985  
 Farmall M, \$900

**TILLAGE**  
 IH 60 4 x 14 trip trailer plow  
 2-trailer type chisel plows  
 JD 8' wheel disk  
 MC 10' wheel disk  
**MISC.**  
 NH PTO spreader  
 IH 1300 3 pt. balanced head mower  
 MF Rotobar rake \$725  
 IH Rotobar rake \$425  
 Int. 455 4 row planter, double disc openers  
 Like new 6T wagon gear w/new 8 ply tires.

**DISMANTLING TRACTORS FOR PARTS**  
 Harvesters and Corn Heads for Parts  
 JD 2010, 70D, 4010, IH F 14, A, B, C, H, M, 300, 350, 460, 460 Lt., Supers C, H, & M. JD A, B, 50 & 60. AC WD, WC, D17. Oliver 70 & 77. Ford 8N, Ford 6000D. Case SC & V.A.C., DC. Massey 44D, 333, 30, MF 85D, IH 400, MTA, 240, F20, WD D2  
 Cat crawler. JD 70 G, Oliver crawler, 2 Oliver crawler loaders.

Dismantling 50 pickers for parts

**KEITER'S FARM MACHINERY**

R.D. #1 Halifax, PA 17032 Rt. 225 20 mi. from Hbg. Phone: 717-362-9574



**M.M. WEAVER & SONS, INC.**

Leola, PA 17540 (717) 656-2321  
 Located: 4 miles West of New Holland on Route 23, 1 1/2 miles Northeast of Leola on the North Groffdale Road, 1 mile on the right, opposite Groffdale Mennonite Church.

**USED TRACTORS**

MF 2675, 100 hp ..... 20,000.00  
 MF 1135, 120 hp., w/cab 12,500.00  
 MF 1130, engine overhauled ..... 7,500.00  
 MF 1130 ..... 6,000.00  
 IH 1456 ..... 9,500.00  
 MF 1155, 8 speed ..... 8,500.00  
 MF 33 wheel loader ..... 9,000.00  
 MF 811 skid steer, diesel . 5,500.00

**USED PLOWS & TILLAGE**

MF 57 3-16 two way plow . 2,000.00  
 MF 43 3-14 spring trip plow ..... 1,175.00  
 MF 82 4-16 spring trip plow ..... 1,200.00  
 Taylor Way pull type, 12 tooth chisel plow ..... 1,250.00  
 IH 31 tooth, 3 pt. Vibra shank cult. .... 1,200.00  
 IH 13 tooth field cultivator ..... 675.00  
 MF 129 Front Mtd. cultivator ..... 300.00  
 JD 3 pt. rotary hoe ..... 1,800.00  
 MF 428, 4 row cultivator . 1,700.00  
 AC 48 blade transport disc . 900.00  
 Lilliston rotary disc. .... 600.00  
 JD 10 blade offset disc. . 300.00  
 Oliver 10 ft. transport disc. 900.00  
 King 32 blade transport disc ..... 2,500.00  
 MF 730 offset plowing disc 4,750.00  
 JD 694 AN 6 Row Corn Planter w/Liquid Fert. & Monitor ..... 1,350.00

**HAY & MISC. EQUIPMENT**

MF 1560 round baler ..... 5,900.00  
 M-C 9E rotary sythe ..... 3,900.00  
 Gehl 99 Hi-throw blower . 800.00  
 Gehl S.P. 2 row harvester. 1,100.00  
 Badger forage wagon ..... 1,100.00  
 Badger forage wagon ..... 1,200.00  
 Danuser log splitter ..... 675.00  
 Danuser post driver ..... 1,300.00  
 Mott 5 ft. 3 pt. flail mower . 450.00  
 Big Bee 6 ft. rotary mower . 450.00  
 MF 37 hay rake, pull type. . 975.00  
 MF 200 harvester, 2 row corn head ..... 2,900.00  
 Schwartz Mixer-Feeder w/scales ..... 3,000.00  
 Meyer snow blade. .... 300.00  
 Brady 722 6 ft. flail cutter. 2,300.00  
 York 7 ft. scraper blade ..... 350.00  
 New Little Giant corn drag . 780.00  
 Demo Farmhand wheel rake 975.00  
 New Farmhand grinder mixer ..... 4,900.00  
 New Farmhand grinder blower ..... 4,500.00  
 conveyor for above ..... 950.00

**ANNUAL AUCTION MONDAY MARCH 21st**

**USED COMBINES**

1980 MF 760 V8, 15 ft. floating header, 1163 corn head ..... 62,000.00  
 1978 MF 760 V8 w/rear wheel drive & grain saver ..... 48,000.00  
 1976 MF 750 4 wheel drive w/6 row & 4 row corn head & 15 ft. floating grain table. . 39,000.00  
 1976 MF 750 hydro, 14 ft. grain head. .... 29,000.00  
 1976 MF 750 gear drive, 14 ft. grain head. .... 26,000.00  
 1975 MF 760 V8, 15 ft. grain head. .... 29,000.00  
 1975 MF 760 V8 hydro, 15 ft. grain head. .... 28,000.00  
 1975 MF 510 diesel, 13 ft. grain head. .... 19,000.00  
 1974 JD 6600 diesel, 13 ft. grain head. .... 24,000.00  
 1972 MF 300 gas, 10 ft. grain & 2 row corn head ..... 10,500.00  
 1971 MF 410 gas, 13 ft. grain & 44 corn head 11,000.00  
 1969 MF 510 diesel, 13 ft. grain head. .... 12,500.00  
 1968 MF 510 diesel, 13 ft. grain head. .... 13,500.00  
 1968 MF 510 diesel, 13 ft. grain head. .... 10,000.00  
 1968 MF 510 diesel, 13 ft. grain head. .... 15,000.00  
 1968 MF 510 diesel, 13 ft. grain head. .... 10,500.00  
 1968 Gleaner CII, 13 ft. grain & 4 row corn head ..... 8,500.00  
 IH 315 gas, 12 ft. grain head & 2 row corn head ..... 7,900.00  
 AC CII Gleaner w/grain head ..... 2,900.00  
 AC A Gleaner w/grain head ..... 2,000.00  
 IH 141 10 ft. grain head. .... 2,000.00  
 IH 303 10 ft. grain head. .... 2,000.00  
 JD 45 w/2 row corn head & 10 ft. grain head ..... 2,500.00  
 (3) 10 ft.; (4) 13 ft.; (6) 14 ft.; (8) 15 ft.; (5) 16 ft.; (1) 18 ft. grain heads  
 (9) 2 ro 38", (15) 4 row 38", (6) 4 row 30", (11) 6 row 30", (2) 8 row 30" corn heads

**NO FINANCE CHARGES ON USED COMBINES TIL JUNE 1, 1983**

**NEW 10'6" & 18' AMCO DISC HARROWS IN STOCK**

FARM EQUIPMENT

FARM EQUIPMENT

**BETTER FARMING FROM**



**FORAGE & GRAIN BLENDERS**

Available In 9 Models To Fit Your Feeding Requirements  
 For More Information Call **717-354-6235**  
 or Write **FARM MASTER**  
 RD #1, Box 444B  
 New Holland, PA 17557

**WENGERS INC.**

251 South Race Street  
 Myerstown, PA 17067

717-866-2135

Nights Phone: 717-866-7147 or 717-273-9089

**CORNPLANTER CLEARANCE SALE**

15 To Choose From

2X - 4X - 6X - Conventional, Air, No til

Reasonable Offers Accepted

\* AC 6X - Dry - No til ..... \$2950  
 IH 6X Air - Dry - No til ..... \$2500  
 \* White 5400 4X Air - Dry - Monitor ..... \$2500  
 \* AC 770 - 4X - Air - Monitor - Like New ..... \$2950  
 \* IH 56 - 4X - Dry - Like New ..... \$2750  
 \* JD 1240 Plateless - 4X - Dry - Nice ..... \$2750  
 \* Ford 4X - 3 pt. - Dry - Nice ..... \$1850  
 Ford 4X - Dry ..... \$1450  
 IH 449 - 4X - Dry ..... \$675  
 JD 1240 - 4X - Dry ..... Coming in  
 JD 246 - 2X - 3 pt. .... \$200  
 IH 2X - FH - Clean ..... \$600  
 MF 2X - 3 pt. .... \$795  
 Ford 2X - 3 pt. - Blue ..... \$695 & \$895  
 JD 290 - 2X - Pull ..... \$375  
 \* w/Herbicide & Insecticide

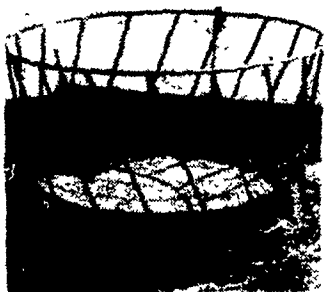
**PLOWS**

(2) IH 700 6x16" Reset ..... \$2900  
 IH 700 7x16" On Land ..... \$2450  
 IH 720 5x18" Reset. .... \$4350  
 IH 710 5x16 Reset ..... \$3450  
 IH 720 5x18 Toggle ..... \$2950  
 IH 710 5x16" ..... \$2450  
 IH 510 5x16" ..... \$1750  
 IH 540 4x16" ..... \$1350  
 IH 311 3x14" FH ..... \$395  
 JD 2500 6x18 Reset ..... \$3950  
 JD 2500 5x18 Reset ..... \$3550  
 JD 1450 6x16 ..... \$2350  
 JD F145A 5x16 ..... \$1450  
 JD 350 4x16 Reset ..... \$2450  
 JD F145 4x16" ..... \$1250  
 JD 3x16 3 pt. .... \$375 & \$775  
 JD 3x16 pull. .... \$375  
 JD 4x16 3 pt. .... \$775  
 MF 880 5x18 Reset ..... \$2950  
 MF 880 4x18 Reset ..... \$2650  
 MF 3x14" Rollover ..... \$795  
 MF 3x16" Rollover ..... \$995  
 MF 2x14" Rollover ..... \$795  
 Ford 140 4X Reset ..... \$2450  
 Ford 142 3X Reset ..... \$1950  
 Ford 4x14" 3 pt. .... \$795  
 Lots More on Stock

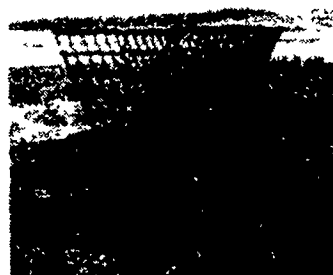
**CHISEL PLOWS**

Brady 10' Pull ..... \$1475  
 Kasco 11' 3 pt. .... \$1175  
 Kasco 13' 3 pt. .... \$1275  
 Mohawk 13' 3 pt. .... \$1775

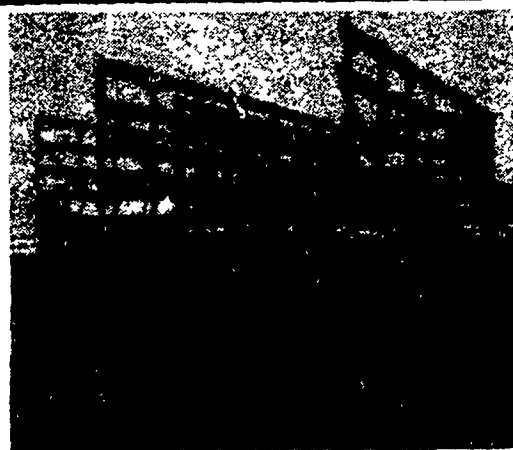
Free delivery to 25 miles



**Round Steel Hay Rack with bottom for 18 head for hay, grain, silage, round or square bales. \$220 and on stock. Bottom ring can be removed for shipping purposes & replacements.**



**Hay Rack and Feed Bunk Combination. Built on skids for easy towing. 8', 12', & 16' on stock. Also available trailer type.**



**Bale Thrower Wagon**

8 ton gear  
 Sides well braced  
 Side Holes - End Gate - Painted

We will also repair your wagon or build on your gear.

Dealers Welcome

**BELL ROAD WAGON SHOP**

RD 1 Box 280, Bell Rd.  
 Christiana, PA 17509

Directions - 1 miles south of Nine Points off 896 on Bell Rd. 8 mi. N. of Oxford

For delivery service call after 6 PM  
 717-529-2717  
 or Strasburg area - Lancaster 717-687-8217