

JD 1939 B open front, excell. cond., Chester Co., 7-529-2538 after 6

For Sale - Irrigation pump: IH 282 Diesel with new 50FB3 Hale pump with Murphy safety switches \$4800. Franklin Co. 717-532-6441.

Wanted - ROPS canopy to fit 350 J.D. crawler. Call Allegan Farms 814-228-3488.

#806 International diesel tractor, IH 5-bottom spring return plow, IH 16 disc grain drill, IH #815 gas combine, #744 4R corn head, 12' grain head, Ford 16' Vibra Shank, 1954 Ford dump truck 717-943-2601 after 4 PM.

IH 544 Diesel, very good cond., also 2250 loader with 2 buckets, like new, 215-562-8397.

White 5100 6 row liquid fertilizer, no till, air planter, new cond., \$8690. White-Oliver 880 tractor 65HP, 12 speed, excell. cond., \$4650. George White sprayer, 310 gallon, 35' self-leveling boom, new cond., \$1950. 215-767-7777.

9N Ford tractor, recond., rebuilt and repainted, snow plow and chains, \$2750. 215-286-5861.

1977 AC model 440 4WD, 250 horse Cummins, duals, AC, cab, 1400 hrs., sells with AC 24' disk, excell. cond., ready to go, 201-879-5851.

1978 Gleaner M2 corn soybean special, air, hydrostat shaft, monitor, hill side grain saver, auto header control, 13 ft. grain table, 4/30 corn head, mint condition. To be sold at farm sale April 9th. Call 215-593-2415 for more information.

Wanted - Engine Lathe 14" 20" swing 40" centers or longer. 814-784-5707. Wayne Smith, Artemas, Pa. 17211.

JD 730 diesel, elec. start, 3 pt. hitch, 814-793-4293. A 3 pt. hitch stabilizer for an IH 574 tractor, 814-623-2611.

White 5400 6 30" row no-till corn planter, liquid fertilizer, 72 amp. PTO alternator, four carrying wheels, SM3 monitor with seed counter, \$3800, Frederick Co., MD, 301-829-0407.

10' Miller disk, 3 bar with leveling cylinder. 814-355-3553.

For Sale - 856 Int. diesel tractor, 2800 hrs., exc. cond. 717-426-2655 after 6 PM.

JD 4010 w/new engine, 38" rubber, front exc., 814-793-4293.

For Sale - IH 10' disc, \$600; NH 818 harvester w/two row corn and pickup head, \$650. 717-458-4334.

Two row corn planter, \$100; 2 way plows, \$100, to fit AC model G tractor, 301-449-5463 after 6 PM.

JD 4010 diesel, good rubber, weights, ROPS, \$4850. 301-833-9091.

JD 1209 Haybine, \$3500 NH 479 Haybine, new rolls, \$2900

NI 402 Hay Rake, like new, \$1200 AC 340 Corn Head for G Combine, \$2500 Case 1737 Skid Loader, \$3800

WENTZ FARM SUPPLY Palm, PA 215-679-7164

JD RWA 14' transport disc harrow, \$795. NH 212 manure spreader, PTO, has new web, \$395. Oliver Radex 2 bottom 14" trailer plow, \$275. 717-354-0266.

JD 4010 turbo Diesel, great 1st or 2nd tractor, Athens rock flex disc, like new, Little Giant elevator, must sell all, Cumberland Co., 717-532-8905.

IH T4 crawler tractor with loader, Lanc. Co., 215-445-7468.

PTO 3 pt. hitch bale chopper w/blower for use in bedding cows and landscaping work, regular price \$1945, one only at \$1345. 301-398-2948.

MENNO BEILER, Nine Points, March Discount Sale, 10% up to \$100. 10% and 2 up to \$200. 10% and 3 up to \$300. NH Mc JD mower knives and parts, galv. and plastic pipes, fittings, plow shares, tools, shovels, etc. JD 3010 diesel. 814-793-4293.

WD AC w/NI loader, wide bucket, \$1000. 717-665-2695.

John Deere 3010, \$3200. Vermeer round baler, \$2475. Badger honey wagon, \$1500 and 2 ton Clark fork lift, \$1850. Berks County. Call 215-777-0052 or 775-0508.

Wanted - 6 or 7 16" bottom Int. plows. 301-334-4570.

For Sale - AC 80S mower, \$100; MH 44 engine w/hyd. pump starter and clutch housing, \$125; AC CA plow, \$150; will sell parts off AC WD CA and WC. Lebanon Co. 717-865-6860.

1080 MF w/cab. 814-793-4293.

For Sale - Brilliant grass seeder, like new, 10', \$2500; MC rotary scythe 9', \$2700; 4 row front mounted cultivator for Farmall M or newer tractors, \$350. Garrett Co. 301-334-4570.

Struck 8 HP mini-dozer, \$750

DENNIS M. MILLER Rt. 22 Grantville, PA 717-838-1888 anytime 717-469-0937 daily

For Sale - New model 2 bottom hydraulic reset plow, can be used as scraper or hydraulic cart to plant corn, etc. Elam B. Stoltzfus, RD1, Box 53, Gap, Pa. 17527.

JD 346 Baler w/#30 ejector, used less than 10,000 bales, like new. 301-592-7992 or 592-2982.

JD 4020 w/cab, 38" rubber, like new. 814-793-4293.

Allis G tractor with plow, cultivators, mower and snow blade. Phone 717-865-7048 after 4 PM or weekend.

John Deere 435 diesel, new paint, good tires, \$2500. Hardie Sprayer 50 gal. model 99 complete w/gun and hose, \$500. Parkland riding mower w/grass catcher - like new, \$500. 215-921-0453 after 6 PM Berks County.

IH 400 cyclo. planter, 30" no-till monitor, IH 350 Harvester corn grass head, very nice, 717-776-3389 Cumb. Co.

One way cylinder for AC tractor, \$20. 717-665-2695.

Oliver auto. reset 5-16 plow, like new. 814-793-4293.

1976 IH 1566, duals, air, very good, asking \$16000; Farmall M, hydraulics, \$1000. 215-966-5816.

MF 245 diesel tractor, 260 hours, excellent condition, MF 4 bottom semi mtd. plow. Harford Co. 301-457-4215

NOW AVAILABLE! FARM POWER, FARM INVENTIONS, and FARM ANIMALS IN THE MAKING OF AMERICA" 3-beautiful Collectors Volumes with over 600 rare engravings and photos of Steam Engines, GAS-OIL TRACTORS, Gas Engines, Threshing Machines, Hay Machines, PLOWS, HORSES, CATTLE, ect with complete descriptions and information. 392 pages. SPECIAL! all 3 volumes \$18.95 postpaid Diamond Farm Book - Publishers, Dept. LF Box 537, Alexandria Bay, NY 13607.

IH 2400 gas, w/2050 loader, ROPS, reverser, 1600 original hours, \$5,500/offer. 301-833-9091.

For Rent - a mechanical mulch planter, plants round or square peat pots, in plastic, \$15 per acre. Lancaster Co. 215-445-4090.

Case 200 baler w/bale launcher, good condition, \$850. 201-996-4484.

NH 275 baler super sweep pickup w/thrower, baler good, thrower needs some repair. Lanc. Co. 717-626-6765.

IH 784 diesel tractor, 714 hours, excellent condition, also 2250 quick-mount IH manure loader. 717-464-3492.

Oliver 565 semi-mtd. plow, 5 trip btms., to be sold at M.M. Weaver sale, March 21st.

Ford 8000 w/dual power, good rubber, good cond., 717-786-2839.

JD #F145 Plow 4x16 semi-mtd. hillside hitch; #17 NI spreader; IH suit case weights 100 lbs. each. 717-933-8134.

For Sale - 1968 JD 45 SB combine, 12' grain head, 234 corn head, shaded \$5000. Burlington Co. 608-267-5531 or 609-267-4621.

Hefty-F tractor, like new, 4 cyl. Continental gas engine, hyd. 3 pt. hitch, 3 forward speeds, high and low, \$2500. 201-751-3718, 201-667-0563.

JD 1240 4 row corn planter, insecticide attachments, very good cond. 717-687-7209.

IH Super C narrow front, new rubber, plows, cultivator, and snow plow, \$200. 717-587-5238.

IH #510 drill, NH 351-50 bu. grinder mixer, NH Super 717 field chopper, corn and grass head, IH 455 corn planter 4R, NI 1R corn picker, 2 self-unloading wagons, Dion and NH, 201-236-2376.

For Sale - Farmall 806-D, fast hitch, 18.4x34" rubber, partial cab, \$4000. JD 13-hoe grain drill w/ban seeder, good fertilizer boxes, \$800. JD 494A corn planter, w/insect. boxes, \$550. IH 56 corn planter w/D-D open fiberglass boxes and insect., IH 6' fast hitch, blade, \$200, 717-362-9096.

For Sale - Farmall 460G cab, WF, FH, L Pto \$2250; Super M live hyd. 600D \$1100; 8N Ford \$1800 3 pt. 2 row cult. new \$250. 301-452-8646.

35 Ferguson w/Davis loader. 814-793-4293.

For Sale - 2 Chsholm Ryder 504 hi-boy snap bean harvester with dump carts, reconditioned and ready to go. 315-364-8782.

Vicon rotary disc mower, 3 yrs. old, rebuilt last year, ready to go, sells new for \$13000, priced to sell at \$5000. 717-759-8129 after 7 PM.

For Sale - tractor IH 1466, cab, air, duals, plow IH 6-18 auto. reset, Chisel plow, 13 tooth, Disc Sunflower, heavy, offset fold, Combine TR70, 13 grain, 6-30 corn, wagon Grove silage 16' also 1 silage wagon for parts, balers IH 3430, 47 thrower, 301-666-0079 before 8AM.

JD 145 semi 3x14 plow in excellent condition asking \$800. Call 609-466-3334 evenings.

JD 2020 diesel, w/e, 3 pt. hitch. 814-793-4293.

Steel tubing farm gates, from 4-18' long; field sprayers and parts including service. Plastic mulch, 4'x2000' rolls, \$27.25 each. Discount on lg. orders. Abram K. Fisher, Old Leacock Rd., Ronks, PA 17572.

JD 3020, gas, low hours, good condition; JD 4010 w/4020 motor. 609-268-1602.

For Sale - John Blue 400 gal. stainless steel boom type sprayer with large pump and line, also 3 hay wagons. 717-382-4254.

JD 2630, low hrs., exc. cond. 814-793-4293.

2640 JD tractor with 146 loader, \$1200. 717-665-5739.

Badger 10' manure pump, used 1 yr., exc. cond. 301-592-7992, 592-2982.

4430 JD diesel, 4 post canopy, good tires. 301-865-3613.

NOW AVAILABLE! ANTIQUE GASOLINE ENGINE ADVERTISING BOOKS. Covers years 1881 to 1948. Hundreds different Gasoline Engine Companies. 1100 different Engines are pictured and described. Sections Covering Accessories, magnetos, Coils, Oilers and much more. A ready reference for collectors to identify old engines. Sold as a set of 8 collectors Volumes Total of 429 pages, quality soft covers \$42.60 value for \$38.95 Postpaid. Diamond Farm Book Publishers, Dept. LF Box 537, Alexandria Bay, NY 13607.

Int. 806 diesel, yr. round cab, w/e, 3 pt. 814-793-4293.

Harvestore 16" belt feeder, H.D. drive, 301-592-7992, 592-2982.

Wanted - Late model front mounted 4 row cultivator for JD, International or Oliver. Kent County, MD 301-928-3253.

Wanted - JD 10 or 20 series flat top fenders. 215-445-5834.

Gehl 1500 baler and International 3 bottom plow quick hitch. Also 200 gal. spray tank on frame. 716-554-6609.

NH 5' flail chopper, \$450. McCormick 13 disk grain drill, fertilizer attachment, \$300. 717-426-3570.

For Sale - JD plow, 3 bottom trip, 3 pt. hookup. 717-569-6641.

JD 7720 4WD combine with straw chopper, 643 CH and 215 flex, 400 hrs., like new. 301-592-7992, 592-2982.



COMING SOON OPEN HOUSE

Big discounts on new tractors, implements, combines, corn heads. Waivers on new and used tractors and combines, new hay tools and balers.

Buy a new MF combine and trade in an eligible JD, IH or AC combine and get an additional bounty. Program ends April 29.

NEW EQUIPMENT IN STOCK

- MF 540 diesel combine
- MF 860 diesel combine, hydro
- MF 1144 corn head
- MF 1163 corn head
- MF 13' table
- MF 15' table w/floating cutter bar
- MF 13' Ull reel
- MF 15' Ull reel
- MF 520 disk, 22" 12' scraper
- Glencoe soil saver
- Du-al 200 bu. manure spreader, upper beater, hydraulic liquid endgate front spill guard.
- Woods M5 5' 3 pt. hitch mower
- Vicon 4 and 5 wheel rakes
- MF 39 planter
- MF 640 planter, 4 row

USED EQUIPMENT

- MF 760 combine 16' Corn & grain head
- MF 510 diesel combine
- MF 300 gas combine w/2 row corn head & 13' grain head
- MF 24, 33, 43, 44 corn heads
- Farmall H tractor
- MF 50 tractor w/motor
- MF 2675 tractor
- Ford 9N gas tractor
- MF 165 diesel tractor
- Ford 900 tractor
- JD 4020 diesel tractor
- Vicon mower conditioner
- MC 7' rotary scythe
- NH 468 haybine
- NH 479 haybine
- Hesston PT 10 haybine
- MF 81 haybine
- MF 10 baler
- NH 275 baler w/thrower
- NH 275 baler
- NH 285 baler
- NH 800 storage harvester
- Ford 612 forage harvester w/2 row corn head & 2 row pickup head
- MF 468 planter
- Bobcat Melroe 700 skid steer loader
- NI front end loader w/dirt and manure buckets
- Heavy duty front end loader for a Ford or Ferguson, excellent condition.

Renting skid steer loaders.

Radio Dispatched Service On All Makes Of Equipment

Large Inventory of New & Used Equipment

ABRACZINSKAS Farm Equipment, Inc.

RD 1, Catawissa, PA. 717-356-2323 (south on Rt. 42)

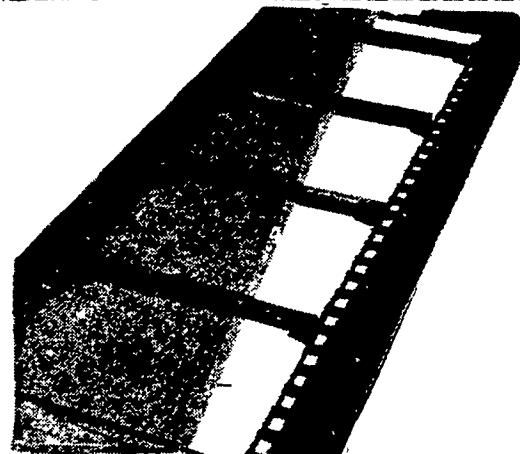
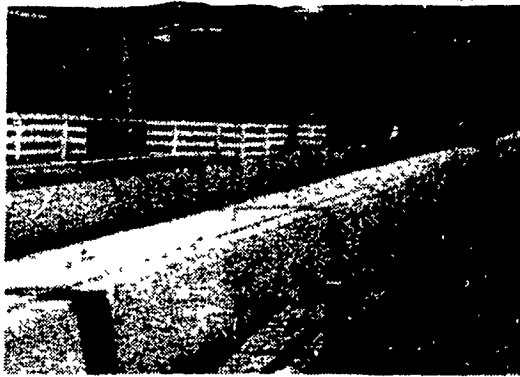
LANCASTER SILO CO., INC.

SUPREME "SS" TURBO-VANDALE MAGNUM-SILO UNLOADERS

2008 HORSESHOE ROAD LANCASTER, PA. 17601

"LANCASTER" CONVEYORS TAPER BOARD FEEDERS BELT FEEDERS

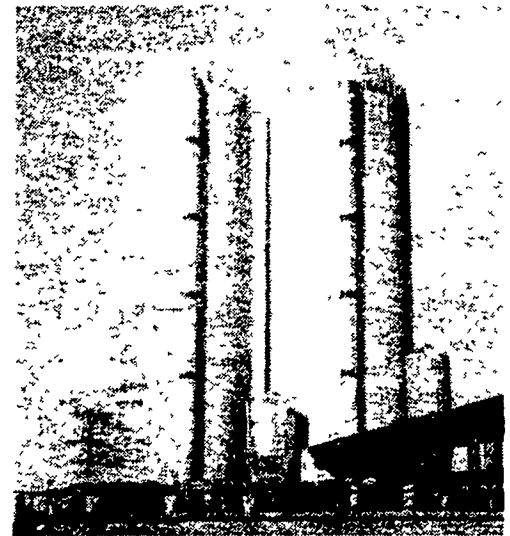
"LANCASTER" BELT FEEDER The Quiet, Economy Unit For No Separation Feeding DOES A BIG JOB FOR LITTLE MONEY



Livestock Feeding is Simple and Easy with a "Lancaster" Taper Board feeder. The conveyor principal of moving the feed is used by cutting a Taper in the bottom to correspond with the length of the feed trough. Feed is distributed evenly on the center of the trough and grain can be fed with Taper Board Feeders using very low horse power and a minimum of noise. Wood construction of these units assures long life and fewer repairs.

Convey your Haylage, Silage, or Grain with the "Lancaster" Double-Chain Conveyor. Built with long lasting wood construction. Available with #55 or #62 chain. Wood slats move material in great volume and will not rust or corrode. Drive Unit designed for low horsepower. Simple - Quiet - Low Maintenance makes this unit the design that is most asked for in the conveyor market today. Units in stock.

"LANCASTER" CONCRETE STAVE SILOS NO PRICE INCREASE FOR 1983 ORDERS. LARGEST SAVINGS EVER FOR EARLY DELIVERY & EARLY ORDER DISCOUNTS. ASK US FOR DETAILS ON LEASING OR DELAYED PAYMENT PROGRAM.



5 YEAR SILO DEPRECIATION

The Economic Tax Recovery Act of 1981 makes it more advantageous than ever to buy a new concrete tower silo this year! Now you can completely depreciate the structure in only 5 years! Not over 12 or 25 years as in the past. Faster depreciation means Uncle Sam takes less of your hard earned profit. And a lower tax bite means more money in your pocket. So to take advantage of the benefits of the new tax laws, call your accountant. And to take advantage of the benefits of a new concrete silo call us.

ASK OUR SALESMEN ABOUT HAVING A 20x60 LANCASTER SILO BUILT FOR YOU FOR ONLY \$280.00 PER MONTH PAYMENT W/OUR LEASING PROGRAM.

CALL 717-299-3721 LARRY HIESTAND - OFFICE WAYNE LLOYD - SALES