

PUBLIC SALE

OF GARDEN TRACTORS, ALL KINDS OF POWER, SHOP & HAND TOOLS, GUNS & MISC. HARDWARE, ANTIQUES, HOUSEHOLD GOODS SATURDAY, MARCH 19, 1983

At 10:00

Sale to be held in West Willow Fire House (Loc. along West Willow Road, Pequea Twp., Lanc. Co., Pa.) (Dir: take #272 South of Lancaster; at Willow Valley Rest., take #272 South to the third road, right to sale).

Mighty Mac. 5 H.P. roto-tiller, garden tractor w/cults., gardent ractor w/quick hitch, roto-mower, Scott's lawn seeder, Central tractor port. air compressor on wheels, Craftsman port. air compressor, Toro weed trimmer (H.D.), elec. hand trimmer, push cultiv., row maker, all kinds of POWER TOOLS, HAND TOOLS & GARDEN TOOLS, 22' wooden ext. & step ladders, metal wheelbarrow w/rubber tires, 1/4 & 1/2 H.P. motors, elec. pump, coal Heatrola.

GUNS: Rem. 30-06 Gamemaster model 760 w/3 to 9 Leupold scope, Winchester 22 model 250 level action, Stevens 22 model 86D, bolt action, Rem. 12 ga. Wingmaster model 870 pump, 20 ga. Topper model 158 single barrel, 410 Topper model M48 single barrel, 12 ga. Iver Johnson & Daisy CO-2 gas pistol, shells & cleaning equip., fishing equip., set of men's golf clubs & cart.

Lg., med. & sm. crocks, items in IRON & WOODEN, Hubley (min.) animals, marbles, blue oil lamp, Fiesta pitcher, glassware & china in depression, pr. glass, German, amber, c & c milk bottle, other glassware & china, pots & pans, wooden picnic table & benches, & other articles not listed.

NOT OUT OF STATE CHECKS ACCEPTED. Food served.

Sale by

MRS. HARRY J. DAVIS, JR.

HOWARD SHAUB, 464-3541 and Roy C. Probst, Auctioneers

Public Sales Register

Closing Date - Monday, 5:00 P.M. of each week's publication

PUBLIC AUCTION

FARM EQUIPMENT, CONSIGNMENT SALE, FLEA MARKET

Sponsored by the Rockingham County Fair Association Fairgrounds US Rt. 11 South, Harrisonburg, Va.

SATURDAY, MARCH 26

at 10:00 A.M.

Everything inside. Food Available 703-434-0005 Fairgrounds 703-833-6131 Chuck Ahrend 703-434-9779 Larry Garber, Auctioneer

PUBLIC SALE

Discontinuing farming we will sell on our premises at 3926 Diehl Road, off Angel Road & off Rt. #194, one mile North of Taneytown & 6 miles South of Littlestown, Pa., Carroll County, Maryland, on:

SATURDAY, MARCH 19, 1983

Starting at 10:00 A.M., the following:

FARM MACHINERY

A.C. 7010 Tractor w/Power Shift, less than one year old & only 200 hours; International 460 Diesel, Farmall-H tractor in good condition, N.H. #277 kicker baler, N.H. #353 grinder mixer, A.C. four row no till planter w/Dickey John & Fert. & Pect. boxes, Hamilton field sprayer, J.D. 12' transport disc, N.H. #461 haybine, International #700 5x16 Auto reset plows, International #311 3x14 plow, two J.D. #115 Chuck wagons, four wagons w/kicker baler sides, 6' wood scrapper blade, N.H. #717 field chopper w/one row corn head, 5' cutter bar for same, three gravity grain wagons, 12' lever harrow, 18' forage wagon, 10' Brillion cultipacker, N.I. #403 hay rake, Kingwise 28' hay or grain elevator, Fox P.T.O. blower w/60' pipe, Ontario 12 disc grain drill on steel, in like new condition; N.I. #319 two row mounted picker w/12 roll husking bed, two wheel R.T. trailer, cement mixer w/mtr., feed carts, two R.T. wheelbarrows, N.H. #518 manure spreader, water troughs, hog troughs, three fuel tanks, high pressure jet pump w/50' hose, barn fogger, cow clippers, milk can, Approx. 100 bu. OF OATS to be sold in bulk.

SHOP TOOLS

250 Electric fence stakes, bolt cutters, dirt shovels, log chains, fence stretchers, dehorners, extension cords, 8 ton jack, 2 ton floor jack, cow chains, cow numbers, steel traps, McCullough 610 chain saw, grease guns, electric fencers, hydraulic cylinders, 36' wood Ext. ladder, 24' Alum. Ext. ladder, many items not mentioned.

BUTCHERING EQUIPMENT

Toledo Electric Comm. meat grinder, 4 kettle & rings, meat table, sausage stuffer, 2 stirrers, flesh forks & dippers, hog scrapers, nose hooks, tripods, electric hand meat saw, beef gambrells.

FIVE HOLSTEIN HEIFERS

Two-three months old, one small white head steer. Milking herd sold privately.

HOUSEHOLD GOODS

Home Comfort white cook stove, two G.E. 30" ranges, one white & one green; G.E. Refg./freezer, 2 chest type freezer, metal cabinets, breakfast set & 6 chairs, two hand made hutches, stands, homemade gun cabinet, old slant front glass showcase, all glass floor showcase, two Zeiglers & one Perfection oil heaters, coffee table & end tables, 3Pc. bedroom suite, other beds and dressers, book shelves, Lge. desk, metal wardrobe, pool table, over 250 sets of Salt & Pepper shakers, some crystal & carnival glass, milk glass, two old oil lamps, water set, corn huskers, ice tongs, crocks, bowls, potted flowers & flower pots.

GUNS

12 Ga. pump Springfield Model #67H, 12 Ga. pump Springfield Model #67E, Remington 22 Rifle Model #41, 16 Ga. single shot Savage Model #220 A, many more items to numerous to mention.

TERMS - Cash or good check on day of sale. Nothing to be removed until settled for. Not responsible for any accidents on the premises.

MR. & MRS. JAMES L. FEW

PH: 756-2513

Austin Bohn, Auctioneer

PH: 775-7607

Sidney D. Lease, clerk

Lunch Rights Reserved

FRI. APRIL 8 - 9:00 A.M. Public Sale of Farm Equipment at New Holland Sales Stables, Inc., 12 miles east of Lancaster, Pa. at New Holland, Pa. For more information contact Norman Kolb or Abe Diffenbach 717-354-4341

FRI. APR. 8 - 10 AM Public Sale of Real Estate and Farm Machinery. Located taking Rt. 287 north, northwest of Williamsport toward Wellsboro, travel Rt. 287 north, 6 mi. north of village of Morris past Shoun Grocery and Gult Station, turn left onto 2nd road approx. 3 mi. to farm on right, Delmar Twp.,

Tioga Co., PA. Ivan M. and Lavina G. Weaver, Owners. Randal V. Kline and Lloyd Kreider and Roy Good, Jr., Auctioneers.

SAT. APR. 9 - 9:30 A.M. C.H. Wolgemuth & Sons Annual All Day Farm Equipment Sale. Located 4 mi. west of Manheim, along Valley Rd., just off Hosier Rd., Lancaster Co., PA. Tractors, Farm Equipment, Hardware - Anything sold on commission.

SAT. APR. 9 - 9:30 A.M. Sale of Real Estate of 60 acre farm, Farm Machinery, Guns, Antiques and Household Goods located in Perry

Co. 2 mi. west of Duncan on Rt. 274, turn east on Linton Hill Rd., first farm. Porter and Betty Hostetter, owners. Kling's Auction Service.

SAT. APR. 9 - PA Ayrshire Spring Calf and Heifer Sale. Located in Alexandria, PA, Huntingdon Co., turn east off Rt. 22 at Agway Store, go 2 1/2 mi. to farm. Cletus and Mary Rhodes Farm. Milt Brubaker, Mgr., 595 Snyder Hill Rd., Litzitz, PA 17543. 717-626-5788.

SAT. APR. 9 - Public Sale of Line Equipment, Trucks and Vehicles. Located at Camp Hill, PA, Harrisburg Area. Vilsmeier Auction Co., Inc.

SAT. APR. 9 - 9 A.M. 8th Annual Public Consignment Sale. Located at Nescopeck Twp. Vol. Fire Co., No. 1, Rts. 93 and 239, R.D. 1, Nescopeck, PA.

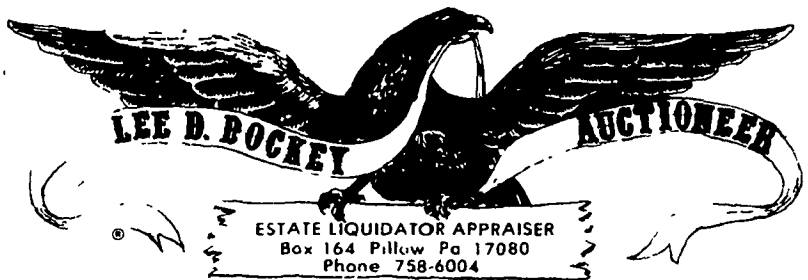
SAT. APR. 9 - 9 A.M. Public Sale of Machine Shop Equipment. Located in the village of Cambridge. George M. Reed, Owner. Sylvan B. Witmer, Auctioneer.

SPECIAL EASTER LAMB & GOAT SALE

WED., MARCH 23

AT 3:00 P.M.

AT THE BELLEVILLE LIVESTOCK MKT., BELLEVILLE, PA.



PUBLIC SALE

OF FARM EQUIPMENT, ANTIQUES & HOUSEHOLD ITEMS

SATURDAY, MARCH 26, 1983

9:00 A.M.

Located in Lykens Valley - 1 mile north of Berrysburg, Pennsylvania, Route 225 to Shippen Dam Road. Go west 1 mile to Sale site. Watch for Sale signs day of Sale.

FARM MACHINERY

A. C. Gleaner Model L with 6-row narrow corn head & 15' grain head with pub-reel diesel motor 158 h.p. hydro tractor drive 1200 hours (like new); Int. 1466 turbo with cab & air 3-pt. 1800 hours; Int. 1066 hydro with cab & heater 2-pt. 1400 hours; Farmall 350 gas with 2-pt. & narrow front; Farmall 340 utility with hydraulic loader & 2-pt. hitch; F20 Int. tractor; Int. 710-4x16 Automatic Reset Plow (3-Pt. or 2-Pt.); Int. 5 x 18 Semi-Mtd. Plow 2-Pt. Hitch; Oliver 6 x 18 Semi-Mtd. Plow 3-Pt. Hitch; Int. 6 x 16 Semi-Mtd. Plow 2-Pt.; 13 1/2' Int. 315 Cultimulcher; 12' Transport Disc; 13' Cultipacker; 656 Int. 6-Row Narrow Corn planter with Dry Fertilizer (Disc & Shoe Openers); Int. 8 x 16 Grain Drill with Grass Box & Fertilizer; Int. 4-Row Stalk Chopper; Ford 612 Harvester Corn & Cutter Bar Heads; Int. 2-Pt. Dyna Balance Head Mower #100; New Holland 404 Conditioner; Int. 45 PTO Baler; Int. 46 PTO Baler; (2) Int. Wagons with Grain Beds & Hoist; (2) Flat Wagons with Sides; (2) Hawk Bull Tank Spreaders; New Holland Tank Spreader; Badger Single Beater Spreader; Gehl Grinder Mixer; 235-Gal. Trailer Sprayer 12-Row with Polyester Tank; 2-Pt. Carryall; Arps Snow Blower; 41' Grain Auger with Transport (Hydraulic Driven); Suction Blower PTO with App. 50' Pipe; New Idea 4-Bar Hard Rubber Hay Rake; Single Chain Hay Elevator with Carriage; Wind Power PTO 82.5 AMP Generator; 11' x 17' Grain Auger; 4-Section Land Roller; Cornel Barn Cleaner with 200' + Chain (Counter Clockwise); Hydraulic Cylinders; Int. Suite Case Weights; 75' Endless Belt; Barn Fan; Woods Straw Chopper; Feed Carts; Rubber Tire Wheelbarrow; Surge Milkers & Pails; Double Stainless Sink; Westinghouse Water Heater; Lawn Sweeper; Platform Scales; 2-Hole Corn Sheller; Used Tractor & Truck Tires; Stewart Cow Clippers; Bench Grinder; Swab Wood Wagon Gear; 2 Sets Cattle Racks for Pick-Up and 12' Bed; Etc.

1973 DODGE 600 TRUCK WITH 16' GRAIN BED

WITH HOIST 26,000 G.V.W.

ANTIQUES & COLLECTIBLES

Jelly Cupboard with Original Graining; Blanket Chest with Original Red Paint, Black Feet, Tulip Strap Hinges; Oak C Roll Knee-Hole Desk; (6) Oak Pressed Back Chairs; Plank Bottom Rocker; Oak Stand; (2) Oak Rockers; Singer Drop-Head Sewing Machine; Round-Top Trunk; Wicker Wheelchair; Assorted Plank Bottom Chairs; (2) School Seats; Bench; Woodbox; Crib; Playpen; (2) Meat Benches; Butcher Kettle with 3-Foot; Copper Apple Butter Kettle; (2) Coffee Grinders; Assorted Picture Frames; Lanterns; Iron Mush Kettle; Jugs & Crocks; (3) Kerosene Lamps; Pressed Oak Mantel Clock; Bavarian Harp; (6) Quilts; Bennington-Type Pitcher; Ironstone Dishes; Goblets; Goufus Glass; Etc.

HOUSEHOLD ITEMS

Majestic Kitchen Coal Stove; 2-Pc. Living Room Suite; (2) End Tables; Coffee Table; Upholstered Chair; 12' x 15' Rug; Smith-Corona Electric Adding Machine; Misc. Pots & Pans; Stillard Scales; Enterprise Sausage Stuffer; Enterprise #32 Meat Grinder with Motor; Meat Barrel; Etc.

Terms: Cash. Personal checks accepted only from persons having an established account or approval prior to sale. Sale will begin with small items from wagons.

Owner

ELWOOD E. BOYER

Blaine N. Rentzel, Auctioneer (Phone: 764-6412)

Lee D. Dockey, Auctioneer (Phone: 758-6004)

Rentzel, Dockey, Dockey & Deppen, Auctioneers

PUBLIC SALE

LIVESTOCK - MACHINERY DAIRY EQUIPMENT THURSDAY, MARCH 17, 1983

At 10:00 A.M.

Located in Snyder County, 1 1/2 miles west of Port Trevorton, PA., turn off Routes 11-15 at the south side of town, onto McNess Road (at Jones Trailer Sales.)

6 HEAD SORREL MULES

Team big 7 yrs. old mules, team 8 yrs. old and team 12 yrs. old. These mules have been used on this farm for several years and hitch good. 6 sets of good work harness, some misc. harness, collars, lines, bridles, etc.

31 TOP GRADE HOLSTEINS

22 milk cows, 1 bred heifer, 5 yearling heifers A-1 sired and 3 younger heifers. 2 cows fresh in Feb., a good number are due March, April and May. This is a young herd and shows a lot of production.

DAIRY EQUIPMENT

Girton 440 gals. tank, Lister 12 H.P. Dsl. engine w/automatic control panel, 500 gals. air pressure tank, 4 H.P. compressor, rotary vacuum pump, Rheem gas water heater, double S.S. tubs, 3 Surge-milker units, S.S. strainer, S.S. carrying pail, air cow clippers, mineral box, etc.

FARM MACHINERY

Fore cart w/Wisconsin 4 cyl. engine and PTO hitch, Fore cart, N.I. No. 206 spreader used 2 yrs., J.D. No. 999 corn planter, N.I. single row tomato planter, Oliver 11 and 13 disk grain drills, Walsh field sprayer, J.D. 14-T baler w/motor, J.D. No. 4 mower 7 ft. cut, N.I. 4 bar rake, C.T. wagon w/flat bed, I.H. 8 ft. grain binder, I.H. corn binder, I.H. and J.D. 2 way riding plows, 8 ft. harrow, 7 ft. disk, 2 I.H. cultivators, spring wagon w/roller bearing wheels, air compressor and hyd. pump w/8 H.P. engine, Star Round 12 hole hog feeder, several 55 gals. drums, neck yokes, single, double and triple trees, shovels, brooms, and misc. farm items.

TERMS - Cash

Lunch at Sale

Not Responsible for Accidents

ROY & NORA BRUBAKER

R.D. #1

Port Trevorton, PA.

Mark Glick - Auctioneer
Reedsville, PA.