

Public Sales Register

Closing Date - Monday, 5:00 P.M.
of each week's publication

SAT. MARCH 26 - 12 Noon. Public Sale of Farms. Located at Clearview Farms, Rt. 77, 1 mi. south of Rt. 40 intersection Abe Cotler, Owner Sickler and Scott, Auctioneers.

SAT. MARCH 26 - 9:30 AM Public Sale of Farm Equipment and Lawn and Garden Equipment Located at the West Virginia State Fair Grounds, Rt. 219 south, Lewisburg-Fairlea, WV Edgar Bohrer, Auctioneer

SAT. MARCH 26 - 10 AM Public Consignment Sale of Farm Machinery Located at Sussex Co Fairgrounds, Augusta, NJ Benefit of Livestock Building Fund 201-875-4730 Col. Fred R. Daniel, Auctioneer

SAT. MARCH 26 - 10 AM Public Sale of Livestock, Cattle, Farm Equipment and Dairy Equipment. Located 7 mi southwest of Quarryville, 3 mi west of Rt. 472, 2nd farm on left after King's Bridge, 1 mi. east of Fairmount along Noble Rd., Little Britain Twp., Lanc Co, PA John S Zook, owner Difenbach's Auctioneer

SAT. MARCH 26 - 10 AM Public Sale of Farm Machinery, Household Goods, Antiques, Hay, Straw, Oats, Ear Corn, Milking Equipment, Far-

mall A and Milk Cans. Located in Chester Co., PA on Friendship Church Rd., 3 mi. northeast of Cochranville, 4 mi. southwest of Coatesville,

from Rt. 41 turn east on Friendship Church Rd., from Rt. 30 go south on Rt. 82, at Webster's Store, go west and turn right on Friendship Church Rd. Estate of Thomas Mann. Steve Petersheim, Auctioneer.

MON. MARCH 28 - 11 AM Public Sale of Equipment. Located on Rt. 448, 1 mi. west of Kennedyville, MD,

PUBLIC AUCTION

At Rudnick's Sales Yard, Route 213, Galena, Md.

2nd SPRING FARM MACHINERY SALE SATURDAY, MARCH 26, 1983

At 11:00 A.M.

Case 1030 Diesel tractor & cab, John Deere 3010 diesel tractor, JD 3x16 mounted plow, I.H. sub soiler, Glenco chisel plow, Oliver 12' field cultivator, I.H. manure spreader, Kewanee 11' disc, 2 flat wagon, JD 494 planter, JD 30' elevator & motor, crop sprayer, N.H. 1 row 717 forage harvester, JD 14T baler, old Ontario drill, Milk tank, some misc. items...

I.H. 915 COMBINE, '81 3 row mechanical transplanter & tank, '76 Portaway tomato harvester (1 row), N.H. mechanical bale wagon, etc. etc. Plus many other pieces of farm machinery.

CONSIGNMENTS ARE BEING ACCEPTED FOR THIS SALE, PLEASE CALL FOR INFORMATION!

Harry Rudnick & Sons, Inc.,
Sale Managers & Auctioneers,
Galena, MD 21635
Phone (301) 648-5601

HOUVALE FARMS

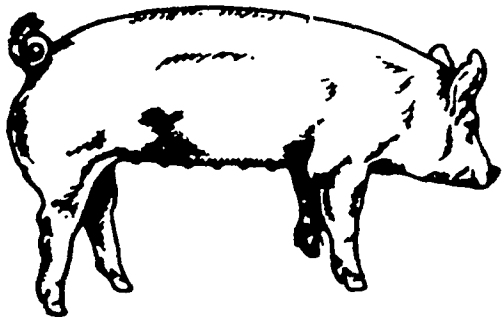
10th Yorkshire Production Sale MARCH 18, 1983

SALE 1:00 P.M.

LOCATION: Lebanon Area Fairgrounds, Evergreen Road and Cornwall Road, Rocherty Road East off of Route 72, Lebanon, Pa.

Upgrade your Sow Productivity with Purebred Hogs. The only people who really care about the future of the commercial man's quality hogs is the Purebred swine breeder. He is the commercial man's friend. Please let us fill your seedstock needs.

YORKSHIRES



Most boars and gilts selling are unrelated to other Yorkshires in the East. Bred Gilts are hand mated to fit your farrowing schedule.

SELLING APPROX. 50 BRED GILTS
30 OPEN GILTS
25 BOARS

All animals will be bled and negative to Pseudorabies and Brucellosis so they can go into any state on sale day.

For Catalogue, Write to:

ELWOOD E. HOUSER
2150 QUENTIN RD., LEBANON, PA. 17042
Phone (717) 272-5798 or (717) 273-2921

THIS IS INVESTMENT DAY

AUCTIONEER: Col. HARRY BACHMAN

Rt. 213. Carl Leonard, and Sons, Inc., Auc-
Owner. Harry Rudnick tioneers.

PUBLIC SALE OF FARM EQUIPMENT

TUESDAY, MARCH 29, 1983
At 11:00 A.M.

Located along Covered Bridge Road 1 mile west of Rt. 73 at Pleasantville, between Boyertown & Oley

Oliver Super 77 Diesel Row Crop tractor; J.D. #8250 18 disc Grain Drill w/grass Seed Attach.; J.D. 336 Hay Baler w/Thrower & Applicator; NH 256 Hay Rake; NH 479 Haybine w/Windrower; NH 790 Tandem Axle, Dbl. Beater Manure Spreader like new; NH 717 Forage Harvester w/Pick-up & 1 row Corn Head; NH 36' Bale Elevator; NH Flail Chopper; 2 ea. JD 125 Forage Wagons w/Tops, good Cond.; Pequea Haytedder; 2 Grove Hyd. Dump Wagons w/3' Sides & Bale Sides; Myers Air Blast Sprayer, 300 Gal. Tank; JD Spring Tooth Harrow, 13' Hyd.; AC High Throw PTO Blower; Midwest Buster Bar for 14' Disc; Gorman Rupp Irrigation Pump w/Chrysler Ind. Motor, 1000 Gal./min.; 1800' 5" Pipe & 1200' 6" Pipe w/Sprinkler Heads, elbows & couplings; 2 Grove Bale Wagons w/Metal Sides; 16' Bale Wagon; 3 Two Wheel Farm Trailers; Badger #BN230 3000 Gal. Tank Spreader, Tandem Axle; DBN102 Badter Manure Pump; Grain Blower; Platform Scales; 3 hp Farm Fan Aeration Fan for Grain Bin; 2 Bin Unloading Augers w/1 1/2 hp Motors; 3 pt. PTO Wikomi Cement Mixer; 2 90 Gal. Tanks for Transplanter; S.S. Simons Machine Works Carrot Reel; S.S. Simon Machine Works 18' Vegetable Washing Belt; 40' long 6" Cardinal PTO Grain Auger; Calhoun Tandem Axle Fert. Spreader, 4 ton capac.; DeLaval Milker Pump & Pipeline Equip. Come Early, not many small items. No Household Goods.

Terms by: **OMAR & MARY ZOOK**

Elton & Alvin Horning, Auctioneers
HORNING FARM AGENCY, INC.
Main Street, Morgantown, Pa. 19543
215-286-5183

The undersigned will offer for public sale the following personal property at 12680 Sandy Mount Road, Orrstown, Pa., 1 1/2 miles south of Roxbury. Watch for sale signs.

SATURDAY, MARCH 19, 1983

9:30 a.m.

40' Trailway Tandem Trailer, 14'x14' building on skids (will have to be moved), John Deere 5' bottom plows, 3 point; John Deere 8' disk on rubber tires, Ford 3 point 2-12" bottoms, Ferguson 2 row corn plows, Ferguson 15' weeder, John Deere 18" dirt bucket, rear wheel weights 3 point; Ford extension power take off; front end wheel weights for 30/20 John Deere; 15' rotary mower, 3 point hitch, like new; Ford sub-soiler, 3 point hitch; John Deere wide bucket 80" wide; John Deere long lift, 64'x40'x6' metal box, hillside hitch, 2-major diesel clutch pulleys, 10/20 tube & rim, John Deere loader stand, milk can rack, gas drum stand, 3 point hitch steel box, metal car ramp on frame, 3 point hitch tractor weight, 5th. wheel bolster for poles, chain link fence & posts, chains for 30/20 John Deere, rope & tackles, wire stretchers, 2 top links for tractor, sledges, wedges, drill chains, jacks, fire extinguisher, socket wrenches, 1" & 3" rachets, handle snache blocks, clearance lights, stop lights, 3 bar lights, turning signals, 16/850 tire chains, new; 2 pr. 16/750 used tires & tubes, copper crow foot, Coleman heater, old hand scales, hydraulic jacks, 1 new & 1 used hydraulic cylinder w/hose, 3/4 ton truck rims, milk cans, plow & cultivator points, rear wheel weights for 8N Ford, metal cross members for lift 8 ft. swivel 3 point hitch, two-way cylinder transfer to manual, canvas, iron, 1/2" cable & other items.

Guns: US revolver 38, Remington model 760 30-06 with scope, gun cabinet for 6 guns.

This is a very small listing. There are hundreds of other items for sale.

CASH. Identification required for bidders number. Not responsible for accidents. Tent in case of inclement weather. Lunch Stand reserved.

CLARK & ELVA CULBERTSON

Foust & Mentzer, Auct.
Foust & Warren, Clerks

PUBLIC SALE

SATURDAY, MARCH 26, 1983

Sale 10:00 A.M.

Located seven miles southwest of Quarryville, 3 miles west of Route 472, 2nd farm on left after King's Bridge. 1 mile east of Fairmount along Noble Road. Little Britain Twp., Lanc. Co., Pa.

LIVESTOCK

1 Palomino mare; 1 black mare; both good workers.

DAIRY CATTLE

36 head Holstein dairy cows. Many recently fresh and close springers; 4 bred heifers due May and June; 9 heifers 6 months to 18 months old; 4 heifers one to five months old.

This is a young herd of good producing dairy cows. Many sired by unit bulls.

FARM EQUIPMENT

N.H. 69 baler; McD #7 ensilage cutter with 2 sets of knives; John Deere #5 7' grass mower with hydraulics; NH crimper; JD KBA disc harrow; Brillion 2' cultipacker.

New Idea 206 manure spreader, used 2 years; Oliver 2-way sulky plow; JD weed hog spring harrow; McD ground driven corn binder; steel wheel wagon with 16' bed; McD corn planter; McD #9 grass mower; New Idea 4-bar side rake; Oliver 2 bottom plow; McD 2-way sulky plow; McD single bottom plow.

John Deere riding cultivator; two fore-trucks; two wheel cart; four calf hutches; feed cart; Minnich tobacco press; 400 tobacco lath; six sets of front gears; four sets of new harness; 1, 2, 3, 4 & 5 horse hitches; collars; bridles; lines; Lanc. Silo 8" goose neck; used lumber and tin; 3 rolls of barbed wire; wheelbarrow; 8" concrete block; 300 tomato baskets; platform scales; 30' 6" outside silo pipe; cedar posts.

DAIRYING EQUIPMENT

Leister SR-3 Diesel, Quincy 5 h.p. air compressor, milker pump, 1 year old; 1 Lehigh 3 h.p. compressor, like new; three Bou-matic milking units; good sputnik; 2 S.S. strainers, S.S. twin tubs.

Not Responsible for Accidents

Owner

JOHN S. ZOOK

Diffenbachs- Auctioneer

Lunch Available

HUNT FARM DISPERSAL SATURDAY, MARCH 19, 1983

10:30 A.M.

3 mi. South of Sabinsville, Pa. One mi. from Beechwood Lake, 6 mi. from Westfield, Pa. Tioga Co.

Selling 101 head of Home-raised Holstein livestock inc. 63 mature cows, 4 just fresh, 42 to freshen in March and April, 11 fresh in the fall and bred back. Last year's DHIA herd ave. 14,060 of milk, ind. records up to 22,869 milk and 796 bf., 7 bred heifers, 7 heifers ready to breed, 22 fancy yearlings, 1 bull calf, 2 started calves. 30 day TB and blood tested and pregnancy checked.

Equip. inc. 1980 Chev. hd. 3/4 ton pick-up w/28,000 mi.; IHC 1066 diesel w/cab, like new; IHC 444 gas utility type; IHC 460; NH 315 baler w/kicker, used 2 seasons, show-room new; NH 479 haybine; NH 717 chopper w/2 heads; NH 25 blower; NH tank spreader w/hyd. lid; NH 256 rolo-bar rake; IHC 4 row corn planter; IHC 13 hoe grain drill; IHC semi 6 bottom plows; IHC semi 4 bottom plows; Case elevator; JD wagon w/new metal kicker rack; NH wagon w/kicker rack; IHC transport drag; NH running gear; IHC running gear; IHC 110 self-unloading wagon; Badger 3 beater, self unloading wagon, like new; 30 kw generator; IHC 3 pt. blade; Myers snow plow; JD 14 ft. tandem disc; 3 stock tanks, feeder wagon, lps tank, ensilage cutter, 2 fuel tanks, wheel barrows, hyd. dump trailer, maple sugar equip. inc. evaporator, pig-line, 15 - taps, quantity of small farm tools, Milk Equip. Surge 75 Plus vacuum pump, 8 Surge units, dumping station, Farm for Sale by owners, 189 A., 130 tillable, 59 pasture and woodlot. New 3 bedroom house w/1 1/2 bath and full cellar. 72 tie stall barn w/barn cleaner. 20-60 concrete silo w/unloader, new milk house w/1,000 gal. tank, 10 T metal feed bin, new metal insulated heifer barn. Beautiful location, land is in an excellent state of cultivation, and priced to sell.

MRS. PAT PATTERSON HUNT

Owner

Sale by Beards, Knoxville, Pa.

Terms, cash or check with proper I.D. Sale in tent. Lunch available.

P.S. - Due to the tragic death of Mrs. Hunt's son, she is forced to discontinue this farming operation. Here is an outstanding herd of livestock, and a line-up of really well-kept farm machinery. Don't miss this sale.