

USDA donates surplus dairy stocks to Mexico

WASHINGTON, D.C. — Secretary of Agriculture John R. Block recently announced the United States has signed an agreement with Mexico to donate more than 30,000 tons of Commodity Credit Corporation dairy products to Mexico to assist the needy. The products were acquired

at a cost of \$80 million.

The donation will include 20,000 tons of nonfat dry milk, 6,460 tons of butteroil, 2,000 tons of processed American cheese and 2,000 tons of cheddar cheese to be delivered from March through December this year.

Block said the dairy products

will be used primarily in school breakfast and lunch programs, as dietary supplements for pregnant women and infants, and at special centers for the elderly, handicapped and mentally ill.

The Mexican government agency responsible for family assistance and social programs will carry out the distribution program for the commodities in Mexico, Block said.

He said that the U.S. products donated to Mexico under this program will not displace dairy products that would normally be purchased on the commercial market for the intended recipients.

This is the sixth donation under recent legislation which amended Section 416 of the Agricultural Act of 1949 to allow the Commodity Credit Corporation to donate its surplus dairy products to help needy people overseas. The Act also authorized domestic donations of these dairy products to help needy Americans.

Computer simplifies crop insurance risk

WASHINGTON, D.C. — Weighing the benefits of crop insurance is easy with new microcomputer software programs called ARCIE, short for All-Risk Crop Insurance Evaluation.

These programs help producers assess their individual crop production risks and evaluate how crop insurance would work for their farms," said Merritt W. Sprague, manager of the U.S. Department of Agriculture's Federal Crop Insurance Corporation.

Sprague said ARCIE is available in two forms. One is a detailed program that takes about 45 minutes to run; the other is a mini-program that takes about 10

minutes.

Farmers calculate results for a single insured unit on a planted per-acre basis.

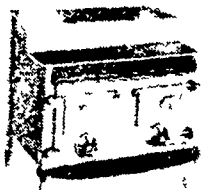
ARCIE was designed and tested by the Cooperative Extension Services at Texas A&M University and Michigan State University, in cooperation with the USDA crop insurance agency.

Franklin honors top growers



County Agent John Shearer, left, presents awards to Franklin County's top alfalfa grower, Grant Gayman, center, and top corn-silage producer, Walter Ocker for 1982. The awards were presented at the Franklin County soils and Forage Day held recently at Lemasters. Gayman, representing Gaymere Farms, Waynesboro, accepted the award for producing 7.3 tons of hay per acre in the Pennsylvania Alfalfa Grower's Program - the highest of eight Franklin County participants. Ocker, tops out of six in the Franklin County Corn Silage Club, produced 30.3 tons of corn silage per acre, utilizing the hybrid, Gutwein 2620.

S-T-R-E-T-C-H Your Dollar It Makes Sense



Thermo-Air Door Fans
Spread warm
where you need it
Mounts anywhere
on door jam



FREE DELIVERY
ALL MODELS
IN STOCK

J&A STOVE SALES

3753 East Newport Road, Gordonville, Pa. 17529
ROUTE 772 - 1/2 MILE EAST OF INTERCOURSE
717-768-8913

- ★ Conestoga
- ★ Hydro Heaters
- ★ Baker stoves
- ★ Free Standing
- ★ Inserts



WELDING



STEEL FABRICATING MACHINE WORK

Angle shearing, bending, punching, notching, coping, plate shearing and flame cutting. Reasonable rates. Check our prices for steel and pipes. Hyd. Jack repair services. **DEALERS WANTED** for custom farm gates, hog troughs, steel bale rack wagons, free stall.

NOLT'S WELDING SHOP

Just off Rt. 222, Kempsville Rd.
R#3 Box 200, Kutztown, Pa. 19530
215-683-9540

We've got your size in over 100 styles of work boots!



If your shoe size has forced you into settling for only "what's available," it's time to come to Red Wing and to enjoy a selection of work shoes in the style you want!

First Quality
Only

Red Wings

GEARY'S FAMILY SHOES

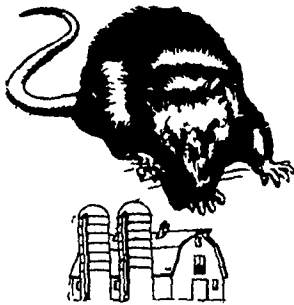
Rt. 443 Schuylkill Haven

717-385-0355

Mon., Tues., Wed. 9-5, Thurs., Fri. 9-8:30, Sat. 9-4, Closed Sunday
Our 70th Birthday!

Stop by & Register for Drawing April 2, 1983

ATTENTION FARMERS... FREE ESTIMATES ON RODENT CONTROL



RODENTS carry diseases which can endanger the health of your dairy herds. Your business is raising them. Ours is protecting them.



Since 1928

Pest control is too important
to trust to anyone else

Lancaster, PA
397-3721

Lewistown, PA
248-0983

State College, PA
237-7607



The Timpco Twins are Tough.

Got Grain? Then get the trailers that are Timpco tough... the Super Hopper or the level floor Super Grain Trailer. They're not only built to take it... they're also built to cut fuel costs. The Super Hopper and

on basis to quality

TIMPTCO

the level floor Super Grain Trailers are lightweight and aerodynamically designed to reduce wind drag. When there's grain to be hauled, Timpco does the hauling best and pulls a lot easier than the rest.

**BLUE BALL,
PA**



717-354-4971