

Hog Markets

New Holland Feeder Pigs

Wednesday, March 2
Report supplied by USDA

Today 684
Last Wednesday 501
Last Year 576

TREND: Compared to last Wednesday feeder pigs firm to 5.00 higher. All pigs weighed on arrival and sold by the hundred weight.

US 1-2: 26 head 33 lbs. 184.00; 94 head 21-39 lbs. 152.00-164.00; 141 head 40-49 lbs. 137.00-154.00; 36 head 49 lbs. 130.00; 68 head 50-59 lbs. 120.00-128.00; 14 head 65 lbs. 110.00; 12 head 85-96 lbs. 74.00-88.00

US 2-3: 47 head 34-46 lbs. 133.00-144.00; 12 head 58 lbs. 114.00.

US 3: 33 head 27-37 lbs. 110.00-116.00; 6 head 44 lbs. 98.00; 27 head 53-78 lbs. 68.00-82.00.

arrival and sold by the pound.

US #1 & 2: 73 head 25-32 lbs. 150.00-152.00; 139 head 32-39 lbs. 127.00-142.50; 181 head 45-49 lbs. 122.50-132.50; 158 head 52-59 lbs. 105.00-120.00; 175 head 60-69 lbs. 97.00-106.00; 210 head 70-79 lbs. 88.00-97.50; 64 head 80-89 lbs. 75.00-88.00; 40 head 92-95 lbs. 78.00-88.00; 19 head 105-115 lbs. 68.00-75.00.

US #2: 63 head 40-76 lbs. 80.00-102.50

US #2 & 3: 67 head 22-39 lbs. 102.00-142.50

Lancaster Hogs

Monday, Feb. 28
Report supplied by USDA

HOGS: Compared to last Wednesday barrows and gilts 1.00-1.50 lower.

BARROWS AND GILTS: US 1-2 200-245 lb. 53.75-54.10; US 1 200-250 lb. 54.25-55.50; US 1-3 220-260 lb. 53.35-53.75.

SOWS: US 1-3 300-450 lb. 46.00-48.00, 450-650 lb. 47.50-49.00, few 49.00-50.00.

Tuesday, March 1

Today 125
Last Tuesday 364
Last Year 238

TREND: Compared to Monday, small supply barrows and gilts .50-1.00.

BARROWS AND GILTS: US 1-2 200-255 lb. 52.85-53.50. US 1 Few head 205-235 lb. 55.00-56.00. US 2-3 Few lots 260-275 lb. 50.00-50.85.

Wednesday, March 2

Report supplied by USDA

Report compared to Tuesday barrows and gilts 1.00-1.25 higher, although US 1 steady.

BARROWS AND GILTS: US 1-2 200-255 lb. 54.00-54.60. US 1 205-245 lb. 55.50-56.10 US 1-3 220-265 lb. 53.00-54.00.

Westminster Feeder Pigs

Friday, Feb. 25
Report supplied by auction

1203 Pigs: Compared to last month, prices were mainly 10.00-15.00 lower. Pigs under 40 lb. were about steady. All pigs weighed on

New Holland Hogs

Monday, Feb. 28
Report supplied by USDA

Today 1492
Last Monday 1591
Last Year 1409

TREND: Not comparable, market not reported last Monday due to holiday.

BARROWS AND GILTS: US 1-2 200-250 lb. 53.00-54.25, few early 54.25-54.75; US 1 200-250 lb. 54.50-55.50, couple lots 55.75-56.10; US 1-3 200-260 lb. 53.00-53.75; US 2-3 One lot 248 lb. 52.75.

Peoria Hogs

Thursday, March 3
Report supplied by USDA

2000 - Barrows & gilts active, opening fully 1.00 instances 1.50.

BARROWS AND GILTS: US 1-2 200-240 lb. 53.50 to mostly 54.00, 150 head 54.25-54.50; US 1-3 200-250 lb. 53.00-53.50.

SOWS: 1.00-1.50 higher. (12%). US 1-3 350-450 lb. 51.00 to mostly 51.50, few 450-500 lb. 54.00-55.00, 500-650 lb. 55.50-56.25.

St. Louis Hogs

Thursday, March 3
Report supplied by USDA

3500 - Barrows & gilts fairly active, 1.50-2.00 higher.

BARROWS AND GILTS: US 1-2 200-250 lb. 53.50-54.00. US 1-3 230-270 lb. 53.00-53.75.

SOWS: 1.00-1.50 higher. (About 8%). US 1-3 300-500 lb. 50.00-52.00; 500-650 lb. 55.00-57.00.

BOARS: Over 260 lb. 44.00-44.25, 200-260 lb. 48.00.

Indianapolis Hogs

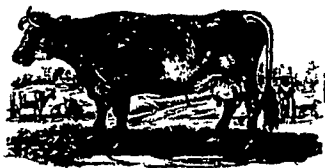
Thursday, March 3
Report supplied by USDA

800 - Barrows & gilts moderately active, .50 higher.

BARROWS AND GILTS: US 1-2 210-255 lb. 53.50-54.00.

SOWS: Under 500 lb. mostly steady with no comparison on weights over 500 lb. (10%). US 1-3 350-450 lb. 48.00-51.50, 550-600 lb. 54.50-55.00.

BOARS: 300 lb. 40.00.



U.S. Inspected Livestock Slaughter

Estimated Daily Livestock Slaughter — Thursday, Mar. 4
Report supplied by USDA

Estimated Daily Livestock Slaughter Under Federal Inspection

	CATTLE	HOGS	SHEEP
Week to Date (Est.)	502,000	1,189,000	94,000
Same Period Last Week (Est.)	471,000	1,098,000	87,000
Same Period Last Year (Act.)	473,000	1,306,000	95,000

Market courtesy of USDA.

Chicago Grain Futures

(Closing Bids as of Thursday, Mar. 3)

	Corn	Wheat	Soybeans	Soybean Meal
Mar.	2.80½	3.14	5.72	169.70
May	2.88¾	3.27½	5.86	174.60
July	2.94¾	3.38¾	5.98¾	177.70

Trend - Corn is higher, Wheat is higher, Soybeans are higher, Soybean Meal is higher.

Market Provided by Commodity Department
Dean Witter Reynolds, Inc.

Futures Trading

(Closing Bids as of Thursday, Mar. 3)

	Chicago Cattle	Chicago Hogs	New York Maine Potatoes
Apr.	65.70	52.00	5.58
June	65.90	52.45	
July		54.60	
Aug.	63.80		

Trend - Cattle are lower, Hogs are lower. Potatoes are higher.

Market Provided by Commodity Department
Dean Witter Reynolds, Inc.

New Holland Dairy

New Holland Sales Stables
Wednesday, March 3
Report supplied by auction

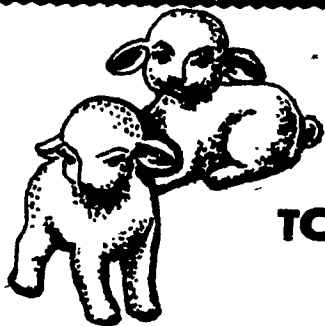
Reported receipts of 145 cows, 99 heifers and 2 bulls. Market stronger.

Load of Canadian, purebred & grade fresh cows 870.00-2000.00, springers 880.00-1275.00; Load of Pa. fresh cows 490.00-1125.00; Load of Pa. fresh cows 800.00-910.00; Load of Canadian fresh cows 685.00-990.00; Load of Pa. fresh cows 750.00-1275.00; Load of Pa. fresh cows 800.00-860.00, springers 710.00-900.00; Load of Canadian fresh cows 730.00-1075.00, springers 820.00-1100.00.

Locally consigned cows 440.00-1220.00.

Springing heifers 675.00-1075.00.
Open heifers 325.00-500.00.
Bulls 490.00-560.00.

J.M. HOOBER
LANCASTER STOCKYARDS
Livestock Marketing Consultants
Specializing in
Slaughter Cattle & Feeder Cattle
PH: (717) 397-6191 or 569-2084 (Home)



AN IMPORTANT NOTICE TO ALL CONSIGNORS OF LAMBS —

With Easter April 3 and the Greek Easter May 8th we recommend that your lambs be consigned on either Monday, March 21st, Monday, March 28th, or Monday, May 2nd. All lambs will be sold at auction beginning at noon and will be sorted and weighed upon arrival.

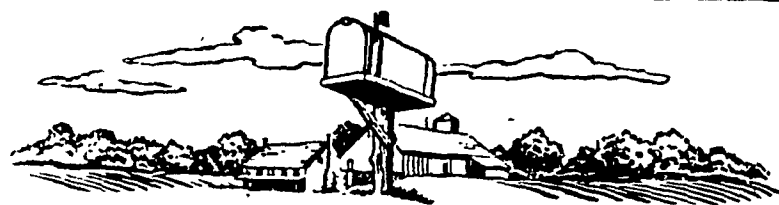
Keep in mind these 3 Mondays for consigning your lambs — March 21st, March 28th and May 2nd, and your consignments are respectfully solicited. Sorting and weighing will begin at 5 A.M.

For further information contact Ken Smoker area 215-593-2123 (residence) or area 717-397-5136 (office).

NEXT FEEDER PIG SALE
Tuesday, March 8 at 1:00 PM

Walter M. Dunlap and Sons
Lancaster Stockyards
Tel. (717) 397-5136

An old Line Commission Firm keeping abreast with the times



In this issue

Five Sections

Editorials

Editorially speaking A10

Dairy

Junior Holstein winner A21
Franklin Dec. DHIA D16
Bucks DHIA D20
Huntingdon DHIA D21
Lycoming DHIA D23
Juniata DHIA D30
Potter DHIA D33
Franklin Jan. DHIA D35
Lancaster DHIA E5

Columns

Now is the time A10
Ida's Notebook B4
Craft Corner B5
On being a farm wife B8
Ladies, have you heard? B9
Brockett's Ag Advice D10
Dairy Pipeline E4

Home and Youth

Homestead Notes B2
Home on the Range B6
Kid's Korner B10
FFA news B16
Farm Women news B23
Home canned food B28

Departments

Farm Calendar A10
Mailbox Markets B29
Classified Ads C9
Farm Business news D2
Public Sales E11

Highlights

The saga of J.D. A35
Council of Farm Organizations A29
Farm Credit lending D24
Dauphin Extension banquet E2
Adams Extension plans year E2
Terrace plow E20