

PUBLIC SALE OF FARM MACHINERY

Off Route 222, 2 miles South of Quarryville, go East on Blackburn Road. 1 mile to sale. 15 miles South of Lancaster. East Drumore Twp.

TUESDAY, MARCH 8, 1983
11:30 A.M.

John Deere 4440 Power Shift Cab, air & radio, good rubber, 800 hrs.; J.D. 4000 syncro-range trans.; J.D. 4030 quad range w/roll bar & canopy; J.D. 2630 diesel w/48 loader & 8 ft. material bucket; J.D. 7000 - 6 row narrow, dry fert. & insecticide atts & regular monitor (2 yrs.); J.D. 8300 double disc grain box & small seed drill, 21 disc; J.D. 1600 - 14 ft. chisel plow w/guage wheels; 2 J.D. F125 mounted plows trip bottoms 4 & 5 bottoms; Oliver 265 - 13 ft. heavy duty disc, 12 in. spacings; Brillion 13 ft. cultmulcher; J.D. 550 trailer sprayer w/47 ft. hyd. leveling boom w/hyd. pump; J.D. 3960 forage chopper w/hyd. - elect controls, 3 row narrow cornhead, auto oiler & 7 ft. pickup head (2 yrs.) corn head has cut 35 acres; J.D. 66 hopper blower; 2 J.D. 216 forage boxes w/roofs mounted on 1065A & 1075 gear.

20x80 Harvestore w/Goliath unloader; 26x80 Fickes Silo w/roof & Patz unloader (unloaded 2 times)

J.D. 660 manure spreader w/hyd. endgate; Van Dale 3,000 gal. liquid manure tank like new; Hesston PT10 haybine; J.D. 858A rake w/rubber teeth & 3rd wheel; AC-303 PTO baler; 2 EZ trail 872 flat bed wagons; J&M bin wagon; J.D. #78 8 ft. scraper blade.

J.D. 307 rotary mower; Van Dale 80 ft. trip bottom feeder w/5 hp motor; 2 Richie waterers; 20 ft. outside hay rack; 20 ft. outside trough; app. 30 ft. alfalfa haylage in Harvestore.

Terms by:
JAMES R. & LINDA L. GROFF
717-786-7700

J. Everett Kreider Auct.

Lunch furnished by Farm Women

AUCT. NOTE: Nearly all machinery in nice condition and ready to go. No small items on this sale. Sale will begin with farm equipment.

Public Sales Register

Closing Date - Monday, 5:00 P.M.
of each week's publication

SAT. MARCH 26 - 9 A.M. Public Sale of Farm Equip- ment, Antiques and Household Items. Located in Lykens Valley, 1 mi.

north of Berrysburg, PA, Rt. 225 to Shippen Dam Rd., go west 1 mi. to sale site. Elwood E. Boyer, Owner. Rentzel, Dockey, Dockey and Deppen, Auctioneers.

SAT. MARCH 26 - 9 AM Public Sale of Lg. Asst. of Hand and Garden Tools, Butcher Equipment, Guns and Household Goods. Located along Rt. 222 between Kutztown and Maxatawny in the village of Monterey, Berks Co., PA. Mrs. William C. Fitzgerald, Owner. Dennis F. Wagner, Auctioneer.

SAT. MARCH 26 - 10 A.M. Public Sale of Tractors, Farm Machinery and Trucks. Located 1 1/2 mi. west of the junction of US 15 and I-80, Union Co., PA. H.H. Mylin, Owner. George Detrick, Auctioneer.

SAT. MARCH 26 - 9:30 A.M. Public Consignment Sale of Equipment. Located at Flemington Fair Grounds, Rt. 31, Flemington, NJ. Kachmar Auction Service.

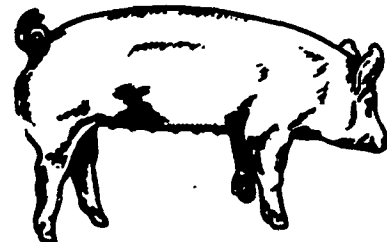
SAT. MARCH 26 - 9 AM Annual Spring Consignment Sale. Located between Mill Hill, PA and Lamar, PA on Rt. 64, Clinton Co. Ron Gilligan and Bill Tressler, Auctioneers.

SAT. MARCH 26 - Public Sale of Farm Equipment, Business Equipment, Household Goods and Antiques. Located in York County, 4 mi. south of Cross Keys along Rt. 94. Emma Wetzel Estate. Dennis J. Plukert, Auctioneer

PA. YORKSHIRE SHOW & SALE

SATURDAY, MARCH 19, 1983
1:00 P.M.

Yorkshires



BRED GILTS, OPEN GILTS, BOARS

Lebanon Fairgrounds
Lebanon, Pa.

Catalogues available. Call or write:
Leon L. Arnold, Sec'y.
R#7 Box 705
Lebanon, PA 17042
717-273-5880

PUBLIC SALE

Potato & Farm Equip. & Truck & Household Goods
FRIDAY, MARCH 11
at 9:30 A.M.

Located near the village of Brogue. Along Route 74 approx. 7 miles South of Red Lion or 15 miles South of Interstate 83 at Route 74 Exit, to Brogue Post Office & General Store turn East onto Lucky Road. First farm on left. Chanceford Twp., York Co., Pa. Watch for sale signs. Due to quit farming, will offer at Public Sale the following equipment.

IHC 1066 tractor - Serial #2610175U044913 - 715 hrs. - w.f. - 3 p.h. - steel weather cab - new batteries - excellent cond., IHC 460 tractor - gas - f.h. - pulley - tires fair, IHC 2001 loader w/hyd. dirt & snow bucket, IHC 710 auto. trip - 18" - 4 base plows w/new moldboards - shims - points & cutter disc, IHC #93 10' cut combine w/straw spreader, Lockwood #22 potato planter w/insecticide applicator on rear - stainless steel belts, IHC #510 grain drill 13 disc, IHC 2 row level bed potato digger - good webs, Haines potato cutter w/bagger, Trexler potato cutter, Troyer potato splitter, Haines 24' high-span piler w/hyd. lift, Brubaker 20' belt elevator, Boggs 18' & 12' belt conveyors, Boggs potato sorter, 375 5/8 bu. wood potato baskets, 150 (100 lb.) new potato bags & 200 used bags, 2 Grove 10 ton 7'x14' wagons w/10 ton twin cyd. hoist & heavy duty tires, 25 ton 7'x14' wagons w/hoist, IHC 370 10' transport disc - new disc in front, Gandy #410 10' disc applicator, Ezee-flow fert. spreader, IHC 7 tooth tool bar - 10' long - f.h., IHC 3 B. plow - f.h. - trip base, IHC 7' f.h. tractor mower, IHC 2 row corn planter less fert. boxes, IHC 4 section spring tooth harrow, IHC cultivators for C Farmall, Brillion 14' transport spring harrow, Speedy roto beater, Lillison 7' pull type rotary mower, Olson roto beater, J.D. 1 tooth pull type sub soiler, Brillion 9' cultipacker, Century pull type weed sprayer, 4 row f.h. weeder, 2 row weeder, New Holland front tractor mount saw - 30" blade, 12-38 hyway tractor chains, truck chains, platform scales, large roll 5/8" steel cable, 20' 4" grain auger, 275 gal. fuel tank & pump, 35 lb. grease & tubes, hyd. cylinders, Scyclone PTO clover seed sower, bushel clover seed, McCullough chain saw, 1/2 ton chain hoist, scrap iron & copper, elec. fans, elec. motors, Champion space heater, 2 rolls snow fence, lots of old wood shutters & hinges, alum. & wood doors, storm windows, lots misc. items.

1975 IHC TRUCK

Load Star 1800 truck - 446 engine - 5 & 2 rear sp. - 30,000 miles - 33,000 license tags - air brakes - air parking brakes - AM-FM radio - ziebarted - light green color - real good 10-20 tires - equip. w/18' long 4 1/2' high grain wood bed - steel sub frame w/22 ton scissors hoist - exc. cond.

HOUSEHOLD GOODS & ANTIQUES

Pine dry sink less doors, butter churn, cane bottom rocker & odd cane bottom chairs, 2 upholstered occasional chairs w/reptiles carved on top, 2 maple single bunk beds, oak double bed, school desk, treadle sewing machine, end tables, large Herr humidifier - comfort control, old lights & chandeliers, elec. rotisserie, elec. sweeper, Maytag wringer washer, rinse tub, radio - record player comb., platform rocker, wicker stands, Duotherm space heater, tricycles, quilting & dress material, books & Reader's Digest, glassware, glasses w/horseshoes. misc. items.

AUCT. NOTE: Most equip. in very nice cond. and well maintained. Not responsible for accidents. Refreshments served. Terms Cash or Approved Check.

ORDER OF SALE: Wagon items, tractors, farm machinery, truck, household goods.

MR. & MRS. JAMES C. BACON
RD#1 Box 95
Brogue, PA 17309
Ph. 717-927-6182

Reynold Burke, Auct.
Ph. 717-244-8702

LIKE NEW FARM MACHINERY AUCTION

J.D. 6620 combine - 4440 DL plus 6 other Tractors
THURSDAY, MARCH 10, 1983
at 10:30 A.M.

For A.R. Stecker & Sons, 1 mile North of Stewartville, N.J. on Prospect Str. just off RT. #57, 5 miles E. of Phillipsburg, N.J., 6 miles E. of Easton, PA. From Easton take Rt. 78-22 to Rt. 57. Arrows Posted!

10:30 A.M. - various parts, some tools, J.D. power washer, charger, wheel chains, tool shed items. 11:30 A.M. - Like New Combine and 7 Tractors! J.D. 6620 DL combine cab air loaded, 520 hrs., show room condition! 4 row #444 W.R. corn hd., #213 13 ft. grain hd. used on 20 acres. Tractors - J.D. 4440 DL Powershift cab air loaded 800 hrs., show room condition! J.D. 4020 DL. side Console Powershift cab, W.F., 2600 hrs., super clean, J.D. 4010 DL W.F. A-1, J.D. 630 gas 3 PTH, Massey Ferguson 285 DL 1500 hrs., W.F. like new, Farmall 460 gas W.F., Farmall 300 gas, Work Master #800 H.D. front loader, 1970 Dodge 1 ton cattle truck w/10 ft. body, Ford F500 12 ft. dump truck.

John Deere Equipment - #7000 4 row W.D. maxi merge corn planter w/Kasco fert. auger, #2500 5 btm. 18" semi mtd. auto reset plow, 2-F345H 5 btm. 16" semi mtd. auto reset plows, 12 ft. hyd. cultmulcher, #35 forage chopper w/1 row corn hd., 16A flail chopper, #346 hay baler w/hyd. kicker, #115 chuck wagon, 17 hole grain drill, 200 bu. PTO manure spreader, 4 row cultivator, hay crimper.

Other Makes - 3 PTH 10 ft. chisel plow, Taylor Way 14 ft. H.D. hyd. disc, White 254 16 ft. hyd. wing disc, Arts Way 425 grinder mixer, Woods 6 ft. rotary mower, 200 bu. gravity flow grain wagon, 6 kicker hay wagons on factory gear (3 are 1 yr. old), 2 - Papec chuck wagons, Farmrite 500 gal. 40 ft. boom field sprayer, Ruth 30 ft. grain elevator gas engine, N.H. 258 hay rake, N.H. 7 ft. mower, N.I. #270 cutditioner, 7 ft., N.I. 350 bu. PTO tandem manure spreader, N.H. 717 chopper, direct cut grass hd. for 717. Brady 2 row stalk shredder, 12 ft. roller packer, flat bed wagon on factory gear, Grove flat wagon body, Danuser 3 PTH post hole digger, N.H. table blower.

Auct. Note: - The above equipment has been kept in tip top working condition. Kept under cover. Many items are only a few years old and are like new! This sale offers a great opportunity to anyone engaged in the farming industry! Plan to attend this sale!

Terms - Full payment Sale Day with proper I.D. Cash or Good Checks up to \$5000.00.

ATT.: Amounts \$5000.00 and over, Cash, Cashier or Certified Checks only, or leave a good check for full amount sale day, and at removal bring a Certified Check for proper amount and receive your check back! Not responsible for accidents! Lunch available! Blizzard date March 11, 1983!

Owners,
A.R. STECKER & SONS
201-859-4989

Sale Conducted By,
Col. Fred R. Daniel, Auctioneers Inc.
Neshanic Sta., N.J. 201-369-4784

(Farm Sales Are Our Specialty)