

# Lancaster Co. DHIA

(Continued from Page E8)

Donald B. Miller	GrH	6-1	297	24,625	3.1	770
Bridgt 2						
John J. Landis	RH	6-10	305	23,787	3.2	770
Primacy						
Meadow Vista Farm	RH	4-1	305	19,983	3.9	770
Echo						
John L. Landis	RH	5-3	305	25,494	3.0	769
162						
5	RH	6-2	305	24,409	3.1	750
Richard G. Wenger	RBrSw	7-7	305	19,390	4.0	769
Jeannie						
Nathan E. Stoltzfus	RH	5-9	305	17,562	4.4	769
Kasenda						
John D. Nissley	RH	5-2	305	22,739	3.4	767
Carrie						
Eli S. King	RH		305	18,761	4.1	766
25						
77	RH	5-7	305	21,949	3.5	759
John A. King	RH	5-4	305	18,233	4.2	766
Patty						
Herbert L. Mast	GrH	3-4	305	18,542	4.1	765
67						
L. Clair Miller	RH	5-10	305	21,526	3.5	764
Vivian						
John F. Petersheim	RH	7-1	305	20,592	3.7	764
21						
Ivan Zook	RH	4-8	305	19,906	3.9	763
22						
Britain Acres Farm	RH	9-7	305	17,940	4.3	763
113						
Robert L. Sensenig	GrH	6-0	305	23,951	3.2	762
45						
Delmar H. Wenger	RH	8-2	305	20,665	3.7	762
Winnie						
John W. Martin Jr.	RH	11-4	305	19,464	3.9	762
10						
David S. Zimmerman	GrH	3-7	305	18,946	4.0	762
29						
Harry L. Troop	RH	4-8	305	22,868	3.3	761
Faith 8						
Donna 58	RH	5-4	305	25,557	3.0	760

Roy H. & Ruth H. Book	RH	5-8	305	19,344	3.9	759
Greta						
Marvin S. Nolt	RH	2-11	305	21,617	3.5	757
26						
Nelson H. Hershey	RH	6-4	289	20,309	3.7	757
35						
Ken & Nelson Stoner	RH	6-4	305	24,920	3.0	756
88 Asta						
J.E. & Shirley Hershey	RH	3-3	305	20,459	3.7	756
Lulu						
Homer G. Hess	GrH	4-3	305	22,673	3.3	755
Bee Bee						
John D. Martin	RH	10-2	305	22,150	3.4	755
Ann						
Harold L. Weiler	RH	5-1	305	20,686	3.6	755
Sharon						
Robert H. Kaufman	RH	4-5	305	17,897	4.2	754
Genia						
Earl E. Martin	RH	4-0	305	17,876	4.2	754
Wilma						
Martin H. Good	RH	5-10	305	17,843	4.2	754
Combine						
Christian G. Becker	GrH	3-5	305	15,996	4.7	753
215						
Graywood Farms	GrH	5-11	305	22,976	3.3	752
43						
J. Wade Groff	RH	3-4	305	20,688	3.6	752
Dacia						

### Columbia Co. DHIA January

Top Dozen - Rolling Herd Averages						
Frank L. Jurbala		46.9	21,322	781	271	
Richard Kriebel		43.6	20,647	746	273	
Shultz Bros.		69.2	17,979	713	226	
Pen Col Farms		116.9	18,302	701	235	
John W. Turfiski		32.0	19,100	691	230	
Richard Yule		33.1	18,995	675	230	
Robert C. Bronson		47.4	18,208	675	260	
Circle C Farms		25.3	17,639	657	205	
Richard Kriebel		21.4	14,212	656	220	

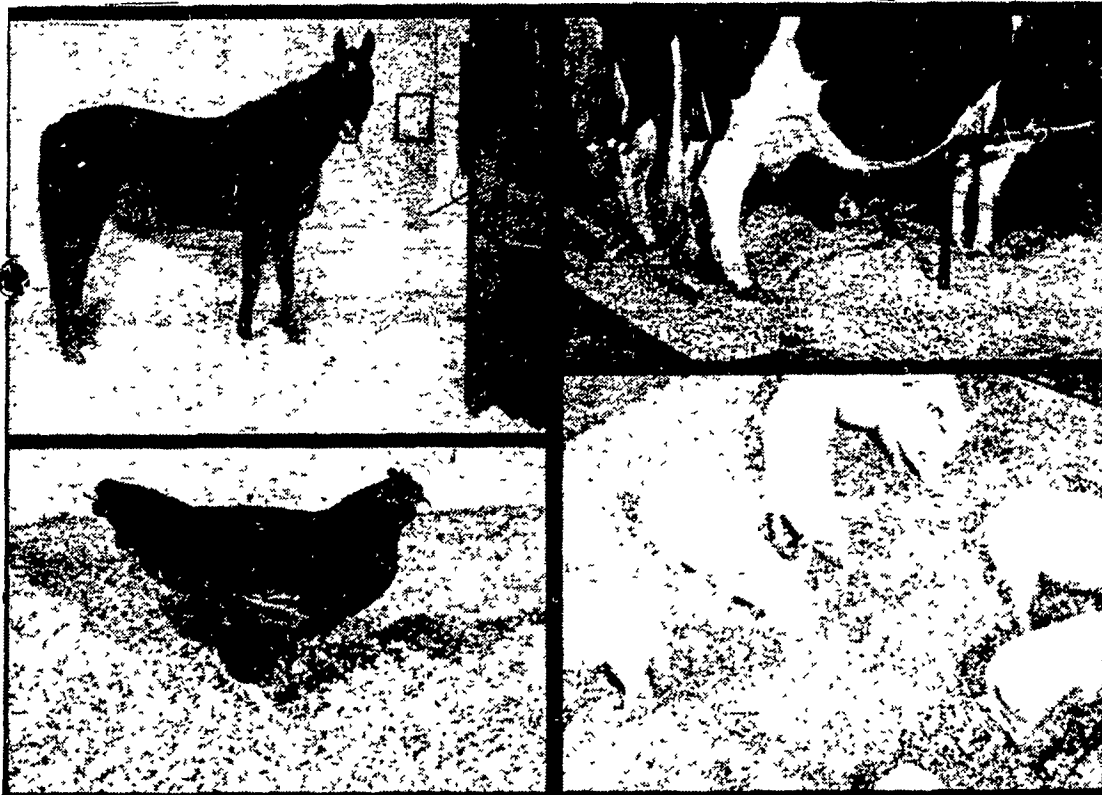
### Garrett Co. DHIA January 1983

The following dairy cows were the top 20 producers during the January 1983 testing period. The records are based on the Garrett County District Official DHIA program. Production is based on mature equivalency and 305 days in milk.

Fred Petersheim	H	122	27,070	833
Ralph Lichty	H	Jenifer	24,100	797
Ernest L. Ganoe	H	Jo	23,810	774
Ezra Schrock	H	006	23,490	694
Kenneth L. Yoder	H	Marva	23,140	658
John D. Doerr	H	782	22,940	850
Ernest L. Ganoe	H	Paullett	22,710	735
Fred Petersheim	H	99	22,560	752
Philip Beachy	H	Mindy	22,420	801
Ernest L. Ganoe	H	Joy	21,790	849
Cleland Beitzel	H	Snoboot	21,770	584
Charles Mason, Jr	H	Ellamae	21,640	779
Cleland Beitzel	H	C9A	21,470	767
Robert W. Bender	H	Rebecca	21,420	794
Ernest L. Ganoe	H	Alvie	21,020	682
Edgar R. Yoder	H	Pat	20,970	710
Ernest L. Ganoe	H	Liv	20,940	627
Charles Mason, Jr.	H	Moon	20,750	668
John D. Doerr	H	779	20,710	788
Fred W. Teter	H	Linda	20,710	719

The DHIA Monthly Summary for all dairy cows on official testing was 16,949 lbs. of milk and 595 lbs. of fat/cow. Records are based on mature equivalency and 305 days in milk.

# For Clean Living...



## Wood Shavings Are Best!

- ★ CLEAN — Fluffy shavings, fresh from the heart of a tree
- ★ DUSTLESS — Fine particles are screened out
- ★ ABSORBENT — Animals are kept clean and dry
- ★ COMFORTABLE — Insulate against cold floors; cushion animals at rest
- ★ ECONOMICAL — Each bale covers 125 square feet to a depth of one inch
- ★ LABOR SAVING — Less waste
- ★ ECOLOGICALLY COMPATIBLE — Ideal soil conditioner
- ★ CONVENIENT — Delivered in clean, sealed bales
- ★ AVAILABLE year-round



SPECIES: Southern Pine  
 PARTICLE SIZE: 3/16" - 1/8", Majority 1"  
 SAWDUST: None  
 DUST: None  
 BALE SIZE: 12 1/2 x 18 x 30" 3.9 cu. ft.  
 WEIGHT: Approx. 45 lb.  
 PACKAGED: 2 ply Multi-Wall Kraft Bag  
 COVERAGE: 125 sq. ft. 1" deep  
 TRAILER LOADS: Approx. 700 Bales

### EASTERN WOOD FIBERS, INC.

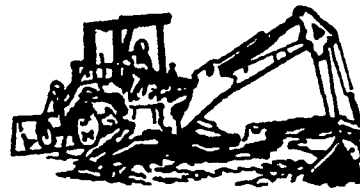
8245 Dorsey Run Rd., Jessup, MD 20794  
 (301) 498-6100  
 DEALER INQUIRIES INVITED.

Processed and  
 Packaged by:

## EXCAVATING

BACKHOES • FRONT END LOADERS

DYNAMIC  
 MASONRY  
 CONTRACTORS  
 SPECIAL FARM PRICES



GORDONVILLE  
 MIKE FISHER & LARRY HERR  
 687-6801  
 FREE ESTIMATES

- Driveway Stoning
- Fill & Topsoil
- Grading
- Septic Tanks & Drain Fields
- Snow Removal
- Manure Pits



## WHEELBARROWS

Some Available Sizes:



K10, 10 cu. ft.  
 Available In April -  
 NEW 10 cu. ft. FIBERGLASS

K8, 8 cu. ft.



M5, 5 cu. ft. reinforced

15 cu. ft.

Ideal for heavy abusive work, reinforced on legs, bearings braces and extra plate under tray for extra support

Treated redwood stain carts, 5 & 8 cu. ft. 15 cu. ft. with removable front.

### SAVE YOUR BACK!

- Let the wheels carry and balance your load
- Dual wheels can be mounted on either model
- Pneumatic & semi pneumatic or steel wheels available
- Wood or steel handles and parts available
- Reinforced models available for extra hard use
- K8 trays in steel & fiber

YOUR ONE-STOP SHOP FOR WHEELBARROWS  
 We Handle A Complete Line

BENUEL L. STOLTZFUS INC.  
 194 South Groffdale Road, Leola, PA 17540