

Livestock market and auction news

Leesport Auction

Leesport, PA
Wednesday, March 2
Report supplied by PDA

CATTLE 360. Compared with last Wednesday's market, slaughter steers steady to \$1 higher. Slaughter cows \$1 to \$2 lower. Choice 975-1315 lbs. slaughter steers 61.75-64.25, few to 64.85, few Choice No. 1 1380-1550 lbs. 57.00-58.75, Good 57.60-62.00, few to 62.75, Standard 54.00-57.75, few Utility & Low Standard 52.00-53.25. Few Choice slaughter heifers 58.00-59.50, few Good 55.00-58.00, few Standard 46.75-50.00. Utility & Commercial slaughter cows 39.10-41.00, few 41.50, Canner & Low Cutter 33.75-38.00, Shells down to 25.00. One Good slaughter bullock at 59.00, few Standard 50.00-53.50. Few Yield Grade #1 1300-1660 lbs. slaughter bulls 55.25-58.50, one at 53.35; few yield grade #2 1080-1175 lbs. 50.00-52.60. Medium Frame #1 425-640 lbs. feeder steers 60.00-62.00, lot 370 lbs. 66.00, large Frame #1 320-550 lbs. 65.00-71.00, few Large Frame #2 375-840 lbs. 46.00-49.00, few Medium frame #2 575-675 lbs. 53.00-57.50; Medium Frame #1 450-630 lbs. feeder heifers 48.00-56.50, few Medium Frame #2 280-400 lbs. 46.00-50.00, lot Large Frame #2 485 lbs. 41.50; few Large & Medium #1 400-700 lbs. feeder bulls 55.00-68.00, few Medium Frame #2 400-460 lbs. 43.50, 300-750 lbs. 37.00-40.50.

CALVES 149. Vealers steady to \$2 higher. Few Choice vealers 94.00-100.00, few Good 80.00-96.00, few Standard & Good 110-130 lbs. 60.00-85.00, 90-110 lbs. 55.00-57.00, 70-85 lbs. 45.00-54.00, few Utility 60-90 lbs. 30.00-44.00. Farm calves, holstein bulls 100-125 lbs. 70.00-87.00, some dozen to 58.00, 85-95 lbs. 55.00-58.00; f.w. beef cross bulls & Heifers 95-125 lbs. 60.00-102.50; slaughter calves,

grating Good & Choice 285-400 lbs. 55.00-69.00.

HOGS 215. Barrows & gilts \$1.25 to \$1.75 lower. US No. 1-2 205-240 lbs. barrows & gilts 53.50-53.85, few to 54.50, No. 1-3 190-260 lbs. 52.50-53.60, few down to 52.00, No. 2-3 270-300 lbs. 49.50-49.60, lot No. 1-3 170 lbs. 53.50. Sows mostly steady. Few US No. 1-3 300-650 lbs. sows 47.00-50.25, few to 51.00. Few Board 43.00-46.50, few light weights 48.50-49.50.

FEEDER PIGS 60. US No. 1-3 35-55 lbs. feeder pigs 118.00-124.00 cwt., lot No. 1-3 60 lbs. 110.00 cwt.

SHEEP 87. Choice 25-50 lbs. new crop lambs 90.00-100.00, lot 20 lbs. at 108.00, lot 60 lbs. at 86.00, 70-95 lbs. 64.00-75.00. Slaughter ewes 17.00-26.00.

GOATS 24. Large Adult goats 26.00-35.00, one at 45.00, few Large Kids 21.00-27.00, few small kids 10.00-14.00.

St. Louis Cattle

Thursday, March 3
Report supplied by USDA

Receipts This Week 5,100
Week Ago 4,500
Year Ago 4,700

Compared to the previous week, Slaughter Steers fully steady, instances .50 higher. Slaughter Heifers mostly .50 higher. Cows 1.00-2.00 lower, instances 3.00 lower. Bulls steady. Supply mainly Choice and Mixed Choice and Prime Slaughter Steers, around 35% Heifers and 10% Cows.

SLAUGHTER STEERS: Mixed Choice and Prime 2-4 1050-1275 lbs. 61.50-63.00, package early 63.50, closing sales 51.50-52.50. Choice 2-4 950-1250 lbs. 60.50-63.00, closing 60.50-61.50. Mixed Good and Choice 2-4 900-1225 lbs. 59.00-62.00. Good 2-3 900-1150 lbs. 57.00-60.00. Standard to Good 2-3 1050-1550 lbs. Holsteins 47.00-53.00, few lots 54.00.

SLAUGHTER HEIFERS: Mixed Choice and Prime 2-4 875-1075 lbs.

60.00-61.50, part load early 62.00, closing sales 60.00-60.50. Choice 2-4 800-1050 lbs. 58.50-61.00, closing 58.50-60.00. Mixed Good and Choice 2-3 800-1025 lbs. 56.50-59.50. Good 2-3 750-975 lbs. 54.50-57.50.

COWS: (Closing week sales) Utility and Commercial 2-4 37.00-40.00. Boning Utility 1-2 40.00-42.00. High-yielding Utility 1-2 42.00. Cutter 1-2 36.00-39.00. Canner and lot cutter 1-2 32.00-36.00.

BULLS: YG 1-2 1100-2450 lbs. 46.00-52.00. Couple YG 1 1050-1175 lbs. 53.50-53.75. Individual outstanding YG 1 1700 lbs. 58.00.

FEEDERS (Including around 2,000 at the regular Thursday auction) Feeder Steers and Heifers 1.00-2.00 lower. Supply mainly Medium Frame 1 400-800 lb. Steers and 350-600 lb. Heifers. Buyer attendance moderate.

FEEDER STEERS: Medium, few large frame 1: 300-500 lbs. 70.75-76.25; 500-600 lbs. 68.50-74.00; 600-700 lbs. 65.00-69.25; lot thin 615 lbs. 72.00; 700-800 lbs. 62.00-67.00. Medium Frame 1-2 and some small frame 1: 300-500 lbs. 65.00-69.75; 500-600 lbs. 62.00-67.00; 600-675 lbs. 60.00-65.00. Large Frame 2 Holsteins: lot 235 lbs. 67.50; lot 440 lbs. 60.00; several lots 525-1010 lbs. 52.00-57.00.

FEEDER HEIFERS: Medium, few Large Frame 1: 350-500 lbs. 58.50-63.00; 500-600 lbs. 58.00-61.25. Medium Frame 1-2 and some small frame 1: 300-600 lbs. 55.25-58.00.

Belknap Auction

Dayton, Pa.
Wednesday, March 2

Report supplied by PDA

CATTLE 60. Few Standard slaughter steers 52.00-56.50. Few Standard slaughter heifers 47.00-50.00. Few Utility and Commercial slaughter cows 39.25-42.25, Cutters 36.00-38.00, Canner and Low Cutters 32.00-36.00, Shells down to 25.00. One Standard

slaughter bullock at 53.00. Individual Yield Grade #2, 1125 lbs. slaughter bull at 44.25. Few Medium frame #1-2 450-680 lbs. feeder heifers 41.00-50. Few Medium and Large Frame #2, 410-800 lbs. feeder bulls 46.00-51.00.

CALVES 89. Couple Prime vealers at 110.00, few Good 83.00-93.00, few Standard and Good 90-110 lbs. 51.00-56.00, 65-85 lbs. 45.00-54, few Utility 45-55 lbs. 20.00-41.00. Farm Calves: Holstein Bulls 90-125 lbs. 57.00-80.00; Hol. Heifers 70-110 lbs. 54.00-90.00; Beef Cross Bulls and Heifers 60.00-81.00.

HOGS 173. Barrows and gilts \$3-\$4 lower. US No. 1-2 205-240 lbs. barrows and gilts 52.75-53.60, No. 1-3 2-260 lbs. 50.75-52.75, few No. 2-3 210-260 lbs. 50.00-50.80, few No. 1-3 195 lbs. at 48.50. Sows \$6 lower. US No. 1-3 300-565 lbs. sows 47.25-53.00. One Boar at 39.25.

FEEDER PIGS 57. Few US No. 1-3 20-25 lbs. feeder pigs 29.00-30 per head, No. 1-3 35-50 lbs. 40.00-55 per head.

SHEEP 6: One Choice 75 lbs. new crop lamb at 77.00, couple Good 75 lbs. at 57.00. Couple Slaughter ewes 15.00 & 16.00.

slaughter bullock at 54.25, two Standard 47.25 and 49.00. Yield grade #1 1335-1975 lbs. slaughter bulls 51.75-54.50.

CALVES 200: One Prime vealer at 109.00, few Choice 87.00-91.00, few Good 61.00-80.00, Standard & Good 90-120 lbs. 53.00-57.00, 65-90 lbs. 50.00-54.00, few Utility 50-100 lbs. 21.00-48.00. Farm calves, holstein bulls 80-125 lbs. 54.00-96.00, mostly 73.00-89.00; few holstein heifers 80-100 lbs. 75.00-96.00.

HOGS 155: US No. 1-2 205-245 lbs. barrows & gilts 53.00-53.50, No. 1-3 215-260 lbs. 52.50-53.00, lot 302 lbs. at 52.25, few No. 2-3 210-260 lbs. 52.25-52.60, lot No. 1-3 168 lbs. at 43.50. US No. 1-3 325-610 lbs. sows 44.50-48.00, few to 50.00, few No. 2-3 345-600 lbs. 43.00-44.50. One Boar at 40.25.

FEEDER PIGS 85: US No. 1-3 40-46 lbs. feeder pigs 116.00-124.00 cwt., No. 1-2 25-28 lbs. 112.00-120.00, No. 1-3 40-45 lbs. 102.00-112.00, No. 1-3 50-60 lbs. 92.00-99.00 cwt.

SHEEP 30: Choice 70-130 lbs. woolled slaughter lambs 47.00-55.00, couple 59.00 and 65.00. Slaughter sheep 15.00-30.00, one at 38.00. Ewes & Lambs - 3 sets 60.00 cwt.

GOATS 3: 39.00-43.00 per head.

Lebanon Valley Livestock

Fredericksburg, Pa.
Tuesday, March 1

Report supplied by PDA

CATTLE 198: Compared with last Tuesday's market; few Choice No. 3-4 885-1195 lbs. slaughter steers 60.60-62.85, one Good at 62.50, few Good & Choice 54.00-57.60, Standard 50.75-53.35, few Utility 44.50-51.75. Few Choice slaughter heifers 55.25-58.25, few Standard & Good 52.00-56.75, few Utility & Low Standard 42.60-48.00. Utility & Commercial slaughter cows 39.75-42.75, few to 43.75, Cutters 38.80-41.75, few to 42.00, Canner & Low Cutter 33.00-38.35, few Shells down to 26.50. One Good

Lancaster Feeder Cattle

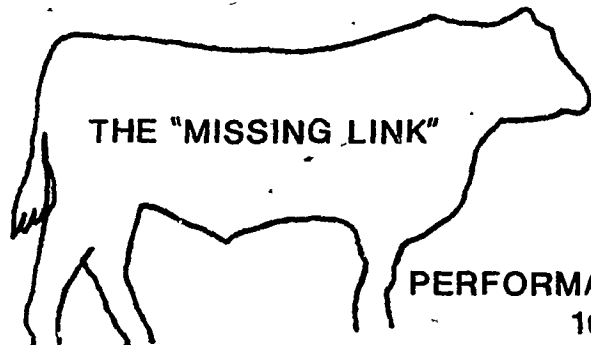
Friday, Feb. 25

Report supplied by USDA

Today 246
Last Friday 320
Last Year 174
TREND: Insufficient volume to test market trends. Supply mainly in lots of three or less with only few lots of 6-11 head.

FEEDER STEERS: Medium Frame 1: 10 head 275-305 lb. 70.10; Medium and Large Frame 1: Couple lots 1030-1160 lb. 60.35-61.50; Medium Frame 1-2: One lot 700 lb. 59.75; Large Frame 2 (Holsteins): Couple lots 710-860 lb. 46.75-48.50.

FEEDER HEIFERS: Medium Frame 1: One lot 305 lb. 54.10.



THE "MISSING LINK"

PRIVATE TREATY BULL SALE

PERFORMANCE SYMPOSIUM
10:30 AM
SATURDAY MARCH 26, 1983

AT THE FARM, DOWNINGTOWN, PA

BULL SALE OFFERING

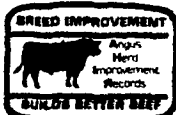
- 30 STRONG, RUGGED, GROWTHY ANGUS YEARLINGS
- SELECTED FROM OUR 60 HEAD PINPOINTER 140 DAY TEST
- BULLS WILL BE PRICED ACCORDING TO PERFORMANCE & PRACTICALITY
- GAIN-FEED CONVERSION-W/DA RIB EYE-BACK FAT-AND SEMEN QUALITY WILL BE AVAILABLE SALE DAY

SYMPOSIUM TOPICS

- PERFORMANCE TESTING & PROFITS
DR. LES BURDETTE
PENN STATE UNIV.
- FEED EFFICIENCY RELATING TO FEEDLOTS & COW SIZE
DR. HAROLD H. HARPSTER
PENN STATE UNIV.
- PERFORMANCE PEDIGREE ANALYSIS
CHESTER D. HUGHES
LANCASTER CO. EXT.

Devereux Soleil Farms

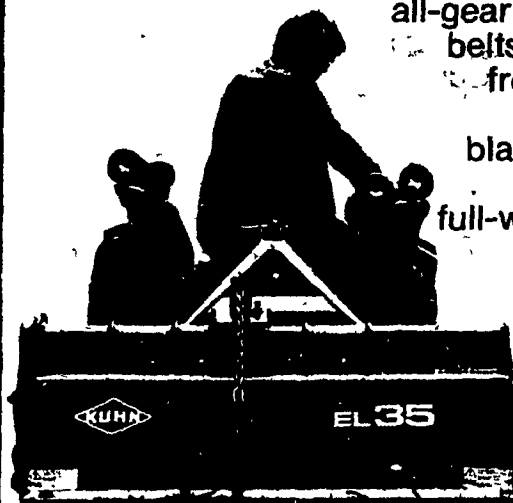
CONRAD L. GROVE TED TEAFORD
DOWNINGTOWN, PA 19335
215/942-5905. (Eve.) 942-3187



The Performer People

Do More With Your Small Tractor: Kuhn EL35 Rotary Power Tiller

Makes any Category 0 or 1 tractor an efficient tillage machine. Check out Kuhn's all-gear drive (no chains or belts!). Note HD clutch, front-mounted depth control wheels, six blades per flange, and out-facing tines for full-width tillage (30-50" width). For speed, maneuverability and control, put a Kuhn tiller on your tractor.



Kuhn FA372 Sickle Bar Mower. This ruggedly built, simply designed sickle bar mower is easy to attach and use. Auto levelling bar in 5' or 6' length to meet your needs. Gets those mowing and trimming jobs done fast.



KUHN S.A. (Bavaria, France)

PHONE 315/829-2620

Kuhn Farm Machinery, Inc.
DEPT. LFG P.O. BOX 224 VERNON, NY 13476
Dealer Inquiries Invited.