

TRUCKS & TRAILERS

'82 Chev. 6.2 heavy duty 3/4 ton pickup, auto., ps, pb, dual tanks, radial tires, 9000 GVW, 9000 mi., \$8700. 717-733-2873, 733-4884.

1974 Dodge power wagon, 318 auto., ps, 4WD, \$2195

1979 C10, V-8, auto., ps, \$3995

1978 C10, V-8, auto., ps, \$2495

1976 C10 6 cyl., 3 speed, \$2295, dealer, 717-733-4422.

1979 Int. 1854 S model, 466 diesel, 5&2 speed, PS, double frame, long wheel base; 1974 Int. 1800, 391 V8, 10.00x20 rubber, 8000 miles on new motor, air brakes, PS, 31000 GVW; 1974 Int. 2070A single axle tractor, 671 Detroit, 10 speed, 10.00x20 rubber; 1974 Int. 4200 conventional tandem tractor, 350 V8 Detroit diesel, 13 speed, PS, air conditioning, 10.00x20 rubber; 1975 Int. 4200 conventional tandem tractor, 350 V8, Detroit diesel, 13 speed, PS, air conditioning, 10.00x20 rubber. 301-877-9889.

For Sale - '73 Ford F600, 35,000 miles, asking \$4000, 215-754-7120.

1970 White 250 Cummins, 13 Sp. 38r, take 20' Body \$3500.00; 1978 Ford 225 Cat. 14' Tandem Dump 13', \$15,975...Others, 814-793-2829, Curry Supply.

For Sale - '73 White freightliner, 335 Cummins, 13 speed Road Ranger, 10.00x20 tires, air conditioning, CB, radio, PS, 3/4 plus tread on tires, three trailers available (40', 42' and 44' flatbeds). All in good condition. 717-799-5306.

'82 Chev. 3/4 ton pickup, 305 auto., ps, pb, radial tires, 5000 mi., w/balance of factory warranty, black, 717-733-2873, 733-4884.

1974 GMC 6000 16' dump-grain body, 379 engine, 5 speed with 2 speed Eaton rear, 44,000 original miles, new 900-20 tires, excell. condition, 717-458-4460, Lyc. Co.

1970 Int. Series 200 chassis and cab, frame for 20 ft. belts, 549 engine, 10 sp. trans., new paint, good rubber, excellent condition. Somerset Co. 814-445-7769.

2 axle house trailer frame for hauling hay or other use, \$475 or best offer, 215-647-8778.

1973 IH 1800 Load Star with air brakes, 5 & 2 speed rear, 16' Midwest body w/hoist, 30,000 lbs. gross. 717-784-7459.

'82 Datsun diesel pickup, long bed, 5 spd., AM-FM, bed liner, exc. cond., \$5800. 717-733-2873 or 4884.

1976 Int. 1700 V8, 404 gas, 5 speed trans., 2 speed rear, 9.20 tires w/16' Omaha grain box w/Harsh hoist. 717-949-2363.

For Sale - 1967 International 10 wheel dump truck, 478 gas \$4,000. 215-488-7328.

1956 IHC 1 1/2 ton truck, 8x12, 4' grain bed, \$475. Set of cattle racks, 8x12. 717-292-3053 or 4509.

1970 IH 1700, 30,000 lb., Midwest grain body, PS, 5 sp. w/air brakes, \$5500. 1972 GMC 6500, 33,000 lb. GVW, Midwest grain body, \$6000. Your choice. 215-536-2173.

1970 Chevrolet C30, dual wheels, custom bed w/extra fuel tank and tool box; 1980 Valley gooseneck trailer, 7 1/2'x20', truck and trailer both in very good condition, \$7500 for unit. 717-677-9658 evenings.

1970 Loadstar 1600 w/20' bed, ideal for hay hauling, no rust, \$2800 or best offer. Carbon Co. 215-377-4549.

For Sale - 1973 Int. 1700 truck with 15' bed with aluminum side and hoist with air brakes, 30,000 gross, \$7000. 717-437-2109.

TRUCKS & TRAILERS

For Sale - U model Mack twin screw, \$3900. 717-285-5345 Lancaster County.

1973 Chev. cab over 20' grain truck, 22 ton hoist, hyd. lift axle, 50,500 GVW, exc. cond. York Co. 717-225-1959.

38 ft. Strick trailer with belt in middle of floor, sloped sides, tarp and bows. Best offer. 717-665-7537.

1977 Jeep pickup, V-8, ps, pb, high and low, auto. trans., tilt steering wheel, insulated cap, 42,400 mi., like new, \$3695 or best offer. Schuykill Co. 717-739-4852.

Wanted - flatbed with dump, 14-16' long. 717-938-2596.

1980 Int. rollback DT-466, 22' bed, 40,000 miles, \$20,000. 301-848-4963 after 6 PM.

TRUCKS & TRAILERS

For Sale - 2 1/2 ton model 12,000 lb. front truck axles with air and spoke wheels. 717-733-8528.

For Sale - Dorsey Dump trailer, 34' long with 66" sides. Barn door, tall gate, good cond., \$13,000, 215-679-9609, Montg.

1976 Mack tractor, R-600, 5 spd., good cond., \$13,500. 215-822-1720.

For Sale - 1961 F600 16' flatbed, 292 V-8 engine, good cond., \$1000. 717-872-5786.

For Sale - 8' truck stake bed, and power lift gate, 717-744-2554.

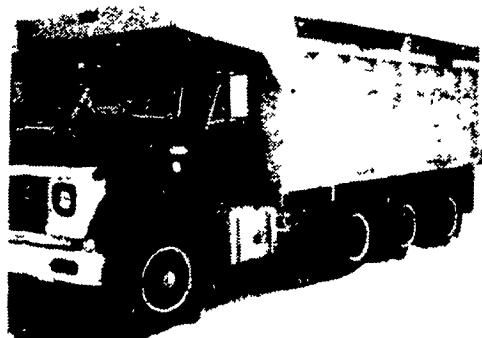
STORAGE TRAILER LEASING
Also office trailers
Delivered to your site
301-771-4529
anytime

We're Pleased To Announce
George A. Sager Is Now
Selling For Petticoffer Dodge

- *1981 B-350 Van, 9000 GVW
- *2-1980 Colts, auto. and 4 speed
- *Truck cap w/slide in camper attachment, \$695
- *1979 W 150 4x4 Club Cab
- *1980 Diplomat, 2 door, fully equipped
- *1976 VW Rabbit
- *3-1981 024 2 door hatchback Omnis

PETTICOFFER DODGE, INC.

Route 230 East Next to Shopping Center
Elizabethtown, PA
PHONE: 717-367-1808

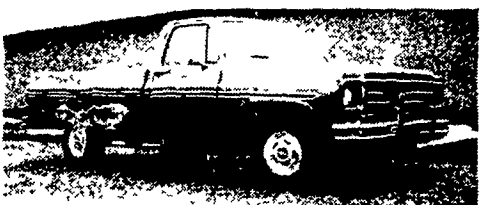


69 Ford Tri Axle 18 ft. Alum. Dump, 44 Rears, 238 Det.; 5 & 4; Jake brake, \$8500

Curry Supply

Curryville, Pa.
814-793-2829

SPECIAL OF THE WEEK



1979 CHEVY C-10 SCOTSDALE

- Diesel
- Air Conditioned
- Automatic
- 44,000 Miles

ONE OWNER - VERY CLEAN

\$4295⁰⁰

HORNING DODGE, INC.

501 East Main St.
New Holland, PA 17557
717-354-4261

TRUCKS & TRAILERS

16' combination stock horse trailer. New 6' wide heavy duty wheels and metal all extras. 215-286-5720.

TRUCKS & TRAILERS

2 used dump trailers for sale, 24' dump trailer \$4500, 26' dump trailer \$7500, aluminum, 717-859-3348.

TRUCKS & TRAILERS

1956 Ford F-600 cab and chassis, 272 V8, exc. inside and out, 4+2 and PTO, \$1200. 717-382-4830.

TRUCKS & TRAILERS

Deutz diesel, 4 cylinder truck engine and transmission, ready to install, 100 operating hrs., \$3000. 215-269-5858.

PICK UPS

- 1983 Ford Ranger XL, 2.3 Litre 4 Cyl., Auto., PS, AM-FM, Sport Wheels, 9,000 Miles, Like New \$7995
- 1982 Chevy C10 Shortbed Custom, 6 Cyl., St. Shift, PS, AM-FM, 11,000 Miles, Gauges, Cap \$7495
- 1981 GMC Sierra 305, V8, Auto., PS, PB, AM-FM, Chrome Rails, 2 Tone Red & White \$7495
- 1981 Ford F250 Custom, 351 V8, Auto., PS, PB, Digital Clock Radio, 18,000 Miles ... \$7895
- 1980 Ford F250 Super Cab, 351 V8, Auto., PS, PB, AM Radio, 2 Tone Brown & Tan, 33,000 Miles \$7995
- 1980 Chevy C10 Diesel, A, PS, PB, AM Radio, 27,000 Mi. ... \$6995
- 1979 Datsun, 4 Cyl., 4 Speed, AM-FM, 30,000 Miles \$4695
- 1979 Chevy C-20 Cheyenne, Trailer Special 454 V8, Auto., PS, PB, Air, Tilt Wheel, Dual Tanks, AM-FM, 8200 GVW, 34,000 Miles ... \$7495
- 1979 Ford F250 Ranger, Super Cab, Camper Special, 460 V8, Auto., PS, PB, Air Cond., AM-FM, Tonneau Cover, 8100 GVW, 2 Tone Blue, Tilt Wheel \$7995
- 1979 Ford F100 Short Bed Step Side, 6 Cyl., 3 Speed, St. Shift, PS, PB, AM-FM & Cassette Tape, White Spoke Wheels \$5495
- 1978 Ford F250 Custom, 351 V8, 4 Speed, PS, PB, AM Radio, 47,000 Miles, Cap ... \$3995
- 1978 Datsun Pickup, 4 Cyl., 5 Speed \$3695
- 1976 Ford F100 w/Ford Fiberglass Cap, 360 V8, 3 Spd., PS, AM Radio \$2995
- 1971 Chevy, 305 St. Shift, AM-FM Radio, 64,000 Miles \$795
- 1969 Ford F250 Custom, 360 V8, 3 Speed, Good Wood-hauling Truck \$795

STAKE BODY

- 1978 Ford F350, 12 Ft. Stake Body, 351 V8, 4 Speed, PS, PB, AM Radio, Dual Wheels, 10,000 GVW \$5995

VANS

- 1982 Chevy Conversion Van, 6 Cyl., Auto., PS, PB, Air Cond., AM-FM & Tape, CB, only 7000 Miles - Like New. \$15,900
- 1981 Ford E100 Econoline, 6 Cyl., Auto., PS, PB, AM Radio, Dual Tanks \$6895
- 1979 Ford E250 12 Pass., 351 V8, Auto., PS, PB, AM Radio, 37,000 Miles \$7495
- 1979 Dodge B200 Panel Van, 318 V8, Auto., PS, PB, AM Radio \$5495
- 1979 Ford E150 Econoline, 351 V8, 3 Speed Standard, PS, PB, AM Radio, 45,000 Miles ... \$4995
- 1977 Dodge 8 Passenger Royal Sportsman, Trailer Special, 440 V8, Auto., PS, PB, Air Cond., AM Radio \$6995
- 1977 Chevy Short Wheel Base Window Van, 5 Pass., 350 V8, 3 Speed Standard, PS, PB, AM-FM & 8-Track \$4295

SUBURBANS

- 1980 Suburban 4-Wheel-Drive 3/4 Ton, 350 V8, Auto., PS, PB, Air Cond., AM Radio, Lockout Hubs \$8495
- 1979 Chevy Scottsdale 4 Wheel Drive Suburban, 400 V8, A, PS, PB, AC, AM-FM Radio, 31 Gal. Fuel Tank, Equalizer Hitch & Brake Pkg, Dk. Brown Metallic \$8995

4 WHEEL DRIVES

- 1981 Dodge W150 Shortbed, 318 V8, 4 Speed, PS, PB, Air Cond., AM-FM Stereo & Cassette, Lockout Hubs, Roll Bar, Tonneau Cover, Turbine Wheels, Dark Blue Metallic, Sharp Truck! \$7995
- 1981 Blazer Silverado, 350 V8, Auto., PS, PB, AM-FM Stereo, CB, Posi-Traction Rear, Air Cond., 31 Gal. Tank, 17,000 Miles \$12,900
- 1980 Suburban 3/4 Ton, 350 V8, Auto., PS, PB, Air Cond., AM Radio, Lockout Hubs ... \$8495
- 1980 Chevy Scottsdale C10, 350 V8, Auto., PS, PB, Air Cond., Lockout Hubs, 2 Tone Red & Maroon \$8495
- 1980 Chevy Blazer, 6 Cyl., 4 Speed, PS, PB, AM-FM Stereo, Lockout Hubs \$8495
- 1979 Chevy Scottsdale 4 Wheel Drive Suburban, 400 V8, A, PS, PB, AC, AM-FM Radio, 31 Gal. Fuel Tank, Equalizer Hitch & Brake Pkg., Dk. Brown Metallic ... \$8995
- 1979 Jeep CJ5, 6 Cyl., 3 Speed, Hardtop, AM Radio, Lockout Hubs, PS, Only 23,000 Orig. Miles \$4995
- 1979 Jeep CJ7 Renegade, 304 V8, Auto., Quadra-Track, PS, PB, Low Range, 44,000 Miles \$4995
- 1979 Ford F250 Ranger, w/Myers Power Angle Plow, 351 V8, Auto., PS, PB, AM Radio, 2 Tone Paint, 29,000 Miles \$7995
- 1978 Subaru Brat, 4 Cyl., 4 Speed, AM Radio \$3995
- 1978 Jeep CJ-7 Renegade, 304, V8, Auto., PS, PB, AM Radio, Transmission & Transfer Case Rebuilt in Last Year, 35,000 Miles, 5 New Radial Tires, Needs Rust Repaired, As-Is. \$3700
- 1978 Ford F250 Crew Cab, 351 V8, Auto., PS, PB, AM Radio, Lockout Hubs, Tonneau Cover, 48,000 Miles \$7995
- 1978 Dodge W-150 Shortbed Stepside Adventurer, 318 V8, Auto., PS, PB, AM-FM Radio, 46,000 Miles, All Black \$5995
- 1978 Plymouth Trailduster, 360 V8, Auto., PS, PB, AM Radio, Chrome Slot Wheels, 2 Tone Maroon & Silver, 39,000 Miles \$6995
- 1977 Jeep Honcho Pickup, 401 V8, Auto., PS, PB, Air Cond., Tilt Wheel, Cruise Cont., AM-FM Stereo, Blk. w/Alum. Cap \$5995

MIKE RHODES & CO.
"THE TRUCK PEOPLE"

Rt. 663 & Swamp Pike, Gilbertsville, Pa.
Area Code 717 or 215 Call Toll Free
1-800-362-7655
or 215-327-1380