

Poultry Markets

Weekly New York Egg Market

	From Friday, Feb. 18 to Feb. 25				
	Fri.	Mon.	Tues.	Wed.	Thurs.
WHITE					
Jumbo	77		77	77	77
Ex Large	73	H	73	73	73
Large	69		69	69	69
Mediums	59	O	59	59	59
Pullets	49		49	49	49
		L			
BROWN					
Jumbo	-		-	-	-
Ex Large	83	I	83	83	83
Large	78		78	78	78
Mediums	59	D	59	59	59
Pullets					
Peewees	Unquoted				
		A			
Off Grade					
Large	62		62	62	62
Checks	36	Y	36	37	37

Breaking Stock: Friday-Tuesday 12.60-12.90; Wednesday and Thursday 12.90-13.20.

Heinsey's Poultry Market

Root's, East Petersburg
Tuesday, Feb. 22

Report supplied by auction

MUSCOVY DUCKS, DRAKES: range .80-.94 per lb.

MUSCOVY DUCKS, HENS: range .60-.76 per lb.

PEKIN DUCKS: range .66-.78 per lb.

PULLETS: 6-9 lbs. range .32-.46 per lb.

RED FOWL: 4-5 lbs. range .22-.28 per lb.

RED FOWL: 5-6 lbs. range .26-.38 per lb.

CROSSBRED ROOSTERS: 4-6 lbs. range .40-.58 per lb.

CROSSBRED ROOSTERS: 7-11 lbs. range .28-.50 per lb.

GUINEA FOWL: range 1.00-1.22 per lb.

BANTY ROOSTERS: range 1.00-2.85 ea.

BANTY HENS: range .50-1.10 ea.

GEESE: 9-15 lbs. range .30-.64 per lb.

LEGHORN HENS: range .05-.12 per lb.

CAPONS: 10-12 lbs. range .50-.55 per lb.

BROILERS: 3-7 lbs. range .20-.36 per lb.

PIGEONS: range 1.25-1.50 ea.

TURKEYS: 15-25 lbs. range .30-.38 per lb.

PIGEONS: range 1.00-1.35 ea.

WHITE PIGEONS: range 2.50-3.60 ea.

RABBITS: 4-6 lbs. range .60-1.02 per lb.

RABBITS: 7-11 lbs. range .40-.74 per lb.

GUINEA PIGS: range .50-1.75 ea.

GOATS: range 25.00-60.00 ea.

KID GOATS: range 15.00-35.00

TOTAL AMOUNT COOPS: 1,176.

New York Multiple Drop Broiler Report

Thursday, Feb. 24

Report supplied by USDA

Current broiler/fryer negotiated prices for immediate delivery includes mostly multiple-drop shipments to New York City from Delmarva.

RANGE: U.S. Grade A 45-48; 1,300 boxes; Branded U.S. Grade A 48-50; 10,305 boxes.

WTD. AVG.: U.S. Grade A 45.85; Branded 49.66.

Delmarva Poultry

Thursday, Feb. 24

Report supplied by USDA

MARKET COMMENT: RTC movement on whole birds ranges from fair to good. Parts continue to move well and clearing satisfactory. Slaughter schedules fairly heavy; live supplies fully adequate. Weights increase slightly to desirable levels at most plants.

Today's L.T.L. asking prices on U.S. Grade A at 45-48 cents.

Eastern Pa. & N.J. Poultry

Wednesday, Feb. 23

Report supplied by USDA

MARKET COMMENT: Offerings adequate for current needs but light for next week. Slaughter schedules relatively heavy.

Light Type Hens; 9-10, mostly 9 1/2-10 prices paid at farm.

F.O.B. plant: 11 1/4-12 1/2, mostly 12.

Philadelphia Eggs

Thursday, Feb. 24

Report supplied by USDA

MARKET COMMENT: Cartoned egg movement no better than fair. Floor stocks of jumbo and extra large are adequate, large fully adequate to ample; mediums ample to slightly excessive.

Prices to retailers: Sales to volume buyers, consumer grades white eggs in cartons delivered store door:

A Extra Large 67-73; A Large 65-68; A Medium 55-57.



ATTENTION FARMERS

EVERY MONDAY
HATFIELD PACKING CO. and
BAUMS MEAT PACKING

Will Receive Your
Hogs and Cattle at the

DANVILLE LIVESTOCK MARKET

RD4, Danville, PA

- We will receive your hogs from 8 AM to 12 Noon every Monday. Your hogs will be weighed and paid for immediately.
- We will also accept your sows & boars.
- Your cattle will be received from 12 Noon to 4 PM. We will either pay for your cattle immediately or you may sell them dressed weight.
- There will not be a commission or yardage fee deducted from your check.
- You may call our office Monday morning and we will be able to tell you the base price for hogs for the day.
- Please come and give us a chance to continue doing business with you through this method.

FOR INFORMATION CALL
717-275-2880

N. E. Weekly Shell Egg Report

Tuesday, Feb. 22

Report supplied by USDA

Prices paid per dozen Grade "A" Brown eggs in cartons delivered to retail stores:

	Ex. Large	Large	Medium	Small
MASS.X	85-87	82-84	70-72	52-54
Mostly	85	82	70	52
N. HAMP.	76-80	76-80	61-65	45-49
Mostly	78	78	63	47
R.I.	77-83	77-83	62-68	46-52
Mostly	80-83	80-83	61-68	50-52
VERMONT	89-98	85-95	73-78	-
Mostly	98	95	77	-
MAINE	85-86	85-86	70-71	54-55

X Includes Central and Western Sections only.

Nest Run Eggs

Prices are from Egg Clearinghouse, Inc., (ECI) Durham, N.H. and reflect trading prices for gradable nest run eggs (GNR) on ECI, a nationwide trading center for producers, packers and marketers. GNR eggs are classified by weight in 30-dozen cases, and traded in lots of either 300 or 750 cases. Prices are FOB buyers dock, and are computed Tuesday and Thursday of each week. This week's prices for each classification were:

Classification	Per Case	Tuesday	Thursday
Class 1 - Large	48 lbs.	53 1/2	53
Class 2 - Large	45 lbs.	50 1/2	50 1/2
Class 3 - Medium	42 lbs.	45 1/2	43 1/2
Class 4 - Small	39 lbs.	38 1/2	37
Breaking Stock	48 lbs.	42	42
Checks	48 lbs.	37 1/2	37 1/2

G&M Livestock

Duncansville, Pa.

Monday, Feb. 21

Report supplied by Auction

SLAUGHTER CATTLE: Steers Choice 60.00-63.85, Good 54.00-60.00, Standard 50.00-54.00, Utility 46.00-50.00; Heifers Choice 59.00-62.00, Good 52.00-59.00, Standard 49.00-52.00, Utility 44.00-48.00, Cows Choice 44.00-46.00, couple to 50.00 & 52.50, Good 42.00-44.00, Standard 40.00-42.00, Utility 38.00-40.00, Cutters 36.00-38.00, Cannors down to 34.00; Bulls 1100-1900 lbs. 50.00-57.50, 900-1100 lbs. 48.00-56.30.

FEEDER CATTLE: Steers Choice 300-600 lbs. 52.00-62.00,

Heifers Choice 300-600 lbs. 48.00-56.00.

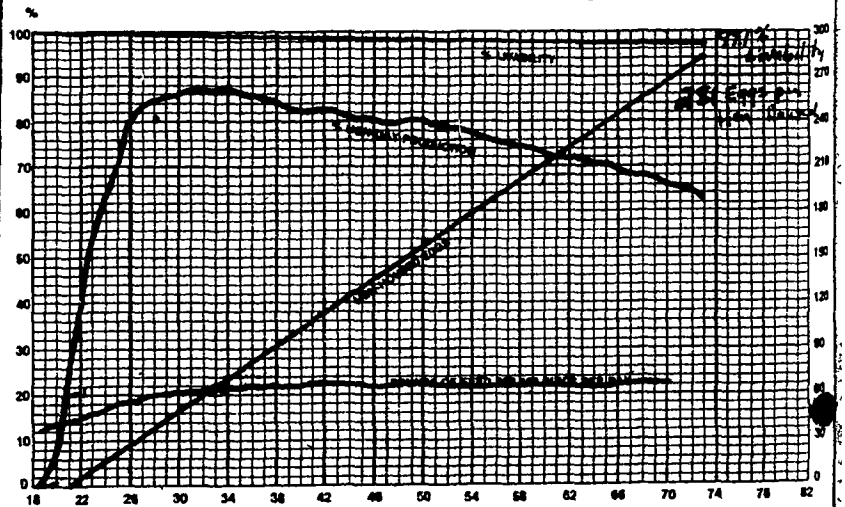
CALVES: Vealers prime and high Choice 80.00-101.00, Good and Choice 70.00-80.00, Standard 50.00-70.00, Utility down to 35.00; Farm calves Holstein bulls 90-120 lbs. 70.00-97.50, Heifers 90-120 lbs. 70.00-92.50.

HOGS: Barrows and gilts 200-240 lbs. 56.00-59.10; 170-300 lbs. 54.00-57.00, Sows 300-600 lbs. 52.00-58.50; Boars 42.00-48.00.

FEEDER PIGS: 25-35 lbs. 25.00-40.00 per head; 35-50 lbs. 40.00-58.00.

SHEEP: Slaughter Lambs None; Ewes 14.00-28.00.

THE DEKALB DK A PROVEN ALTERNATIVE



It can be done. Prove it to yourself. Here's an actual Lancaster Co. record with the following 60 week summary:

- 221.7 eggs per hen housed
- 98% livability
- 3.15 lbs. of feed per dozen eggs
- 20.27 lbs. of feed per 100 hens housed per day
- 75.9% average hen day production

CONTACT:

Mayer's CHICKS, INC.

DEKALB
BROWN & WHITE
EGG LAYERS

Quakertown, PA 18951
(215) 536-3155

HUBBARD
WHITE MT.
BROILERS

Copyright 1983 by Lancaster Farming
P.O. Box 366 - Lititz, PA 17543
Office: 22 E. Main St., Lititz, PA 17543
Record-Express Office Building
Phone: Lancaster 717-394-3047
or Lititz 717-626-1164

Robert G. Campbell, Publisher
Sheila M. Miller, Editor
Dick Anglestein, Staff Writer
Debra L. Koontz, Home Editor

NEWS CORRESPONDENTS

Donna M. Tommelleo, Adams County
Littlestown 717-632-1731

Patty Gross, Bedford, Blair, Huntingdon counties
Martinsburg 814-793-4256

Robin Phillips, Berks County
Mohrsville 215-926-1261

Jane Bresee, Bradford County
Ulster 717-358-3346

Beth Hemminger, Cumberland, Franklin
and Perry counties
Newville 717-486-5322

Sally B. Bair, Lancaster County
Columbia

Sylvia Cooper, Western Pa.
Slippery Rock 412-794-5123

Joyce Bupp, York County
Seven Valleys

Subscription Price:
\$7.50 per year; \$13.00 - 2 years
\$14.00 per year outside of
PA, NJ, MD, DE, NY, VA & WV

Established November 4, 1955
Published every Saturday
by Lancaster Farming, Lititz, PA
Second Class Postage paid at
22 E. Main St

Lititz, PA 17543 ISSN0023-7485

For address change form or new
subscription see Mailbox Markets.
Members of Newspaper Farm Editors Assn.,
Pa. Newspaper Publishers Association,
and National Newspaper Association.