

PUBLIC AUCTION
VALUABLE FARM EQUIPMENT
SATURDAY, FEBRUARY 26, 1983
 10:30 A.M.

Located just 1/2 mile west of Lititz at 24 Lime Rock Rd.

Consists of the following items: 1974 Chevy Nova 6 cyl. stick shift, David Brown 1200 tractor, Farmall C with Cultivator and Mower 4C 544 Hyd. drive with 2000 loader, IHC 450 super automatic 3-16" bottom plow, Case 1800 chisel, Broyhill sprayer, New Holland super hayliner P.T.O., 6 wheel New Idea rake, 4 row White corn planter about new, 2 row Stauffer tobacco planter, McDeering fertilizer drill, Caldwell 5' rotary mower, Cardinal 16' elevator, 519 New Holland spreader, 16'6" auger Brillion cultipacker, 3 section John Deere spring harrow, 28 disc J.H.O. disc harrow, Zimmerman bin wagon 8 ton, bin wagon, single row IHC corn picker, saw mandrel, broad sprayer, 2 rubber tire wagons, John Deere KBA disc, platform scale, hay hooks, pumpkin cutter, wooden forks, grain forks, wooden pulleys, strap hinges, milk cans, churn, hand augers, chains, tractor chains, chicken coops, single trees, wet grind stone, electric motors hand tools, air compressor, various iron troughs, 2 grain flails, Trommel hooks, butter scale, various small household items, butcher tools, small elec. slicer, iron skillet, crocks, oak kitchen cabinet, dishes, chairs, bureau, clothe trees, dishes and numerous items of value.

Sale by
HOWARD H. MARTIN AND
EMMA N. MARTIN

E.M. Murry Assoc. & Auctioneers
 Food by Lime Rock Mennonite School

E.M. Murry Associates

287 Lime Rock Road
 Lititz, PA 17543
 Elmer Murry 626-5244 - 626-2636
 Richard Murry 626-8175 - 949-2280
 Ken Miller 665-2073
 Professional Auctioneers
 Appraisers, and Advisors
 Since 1953



AUCTION SERVICE

PUBLIC AUCTION
9TH ANNUAL EQUIP. AUCTION
SAT., FEB. 26TH
 10:00 A.M.

Call Your Consignments In Now
 So We May Advertise Them. Well
 Established Auction - Last Year
 We Sold 96% Of Our Con-
 signments.

This Is Your Auction To Get The
 Job Done For You By Experienced
 Auctioneers.

CALL 301-658-6400
 8:30 A.M. til 6:30 P.M.

Accepting:
 Farm Equipment
 Tools
 Post-Wire
 Vehicles
 Tractors
 Etc.
 Phone 301-658-6400

Auctioneers: Hunter's Sale Barn, Inc.
 Rt. 276, Rising Run, MD.

Hauling Available
 Restaurant on Grounds
 "Cecil County's Leading Auction Service"

PUBLIC SALE

70 ACRE DAIRY FARM
WED. MARCH 16, 1983
 1:30 P.M.

Located in Chester Co., Lower Oxford Twp., 3 miles north of Oxford on Bethel Rd.

65 acres tillable, good productive soil was originally 85 acres, 15 acres power line which can be cultivated with farm, 4 bedroom house, 4 double Surge milking parlor, milkers and tank to go with 48x140 pole barn, 36x120 pole shed.

Owners -
CHARLES & SARA STOWE

Auctioneer - Steve Petersheim
 10% down sale day, final settlement April 15 or negotiable
 Attorney - James E. Higgins
 For appointment to see farm call 717-786-4624

PUBLIC AUCTION

ANNUAL SPRING FARM EQUIPMENT SALE

AT HARRY RUDNICK & SONS SALE PLACE
 Route 213, Galena, Md.

MONDAY, FEB. 28, 1983
 at 10:00 A.M.

JD 4030 D, AC 45 Tractor gas, JD 4-row no-till Planter, insecticide & Herbicide attach., JD 4-bottom semi-mounted plow, JD 14' Disc-good as new, JD 21 spout Drill double disc openers-new, JD 15' Spring tooth, JD 4-row Cultivator, JD 7' Chisel Plow, JD 14' Cultipacker, N.I. Spreader #12, N.I. 40' Elevator-gas motor, N.I. 7' Tractor Mower, 1963 F600 Ford Truck (cattle or grain) 40,000 miles, 2 flat Wagons, 3-section Spike Tooth Harrow, cord wood Saw, Chain Saw, Posts, gates & wire, wooden stanchions, electric motors, Antique horse equip. & lots of other Misc. things....

Consigned by:
EDGAR PRICE,
 Warwick, Md.

AC 620 Tractor (gas) w/60" belly mower, AC 185D Tractor (1980), AC 7060 Tractor w/ a/c cab (1700 hrs) 20.8 x 38 tires-couplers are on tires for duals, MKS Gleaner Combine w/6-row 30" corp head, 13' floating grain table, AC 600 6-row no till Planter, 1200 Field Cultivator, AC 17 1/2' Crust Buster Disc, 20' Dunham crow foot folding Cultipacker, AC Silage Blower & Pipe, AC Silage Wagon, AC #3000 7-bottom Plow, AC Manure Spreader, AC Bale Carrier, AC Manure Loader, AC 200 Trailer w/Cab Diesel, NH #845 round Baler, #479 Haybine, Manure Spreader, Forage Harvester, Brillion Cultipacker (crowfoot 16', Cultimulcher, N.I. Hopper Spreader, Oliver Rake, Disc Drill-17 tyne), Mohawk Chisel Plow H1688 (12 shank), roto mower, old springtooth, manure spreader, flat wagon & running gear, Lilleston Rolling Cultivator, #6620 Cultivator, Rhino Blade #900, Bridge 7/8 Roto Mower, Little Giant V Body-corn or grain, V. Body & Running Gear, Grove V Body & Running Gear, Kasten Silage Wagon....

Consigned by:
ROBERT DEPUTY,
 Kirkwood, Del.

JD #6600 Combine 4-row Corn Head #444 w/reel for down corn, 15' Grain Head on wagon, 14' 6" Disc Harrow w/Gandy granular herbicide applicator, Corn Planter-4-row w/Gandy pesticide boxes & spring tooth harrow attach., Ferguson 10' Chisel Plow w/MW lift Harrow, Brillion 4-row Cultivator, JD 4-16" bottom Plow 3-pt hitch w/leveling Harrow, fuel tank for pickup w/electric pump, '69 IH 1600 TRUCK w/grain body....

Consigned by:
ED GUSTAFSON,
 Millington, Md.

ALLIS CHALMERS 180 D Tractor, 333 no-till Planter, 10' Road Disc, and much, much more....

Consigned by:
JACK DABLER,
 North East, Md.

I.H. Gas Combine Model 503 w/cab-4R38" Corn Head-16' cutter bar, JD Gas Combine Model 105 w/cab-4R30" Corn Head - 4R38" Corn Head - 15' cutter bar, IH DSL Combine, Hydrostatic Model 915 w/ a/c cab 744 4r38" Corn Head - 13' cutter bar, IH DSL Combine, Hydrostatic Model 815 w/ a/c cab 743 4R30" Corn Head - 13' cutter bar w/Hincker flexible cutter bar, Oliver 7x16" Plows, JD #80 Gas Mower, Hay Crusher, Hay Fluffer, JD Forage Harvester #38, JD 7' Chisel Plow 3 pt., JD #122 Chuck Wagon, JD BWA 16' double Disc, MF 1106 Diesel Tractor, 8' Rhino Scraper Blades (Hyd.), MF 880 Plows 6x16", Post Hole Digger (auger), MF 17' Chisel Plow & much, much more.

Starting at 10 o'clock we will sell garage & auto repair equipment and approximately 100 boxes of automobile and truck supplies....

Consigned by:
GALENA TEXACO STATION,
 Galena, Md.

HARRY RUDNICK & SONS, INC.
 Sales Managers & Auctioneers
 of Galena, MD 21635
 Phone: (301) 648-5601

LUNCH (Come Early)

Public Sales Register

Closing Date - Monday, 5:00 P.M.
 of each week's publication

TUES MARCH 15 - 12 Noon. Complete Mar-Gra Registered Holstein Dispersal. Located 6 mi. northeast of New Holland, Rt. 23 east to Rt 625 north, approx 2 mi turn right onto Union Grove Rd., 1 mi to farm on left Marvin and Grace Reed, Owners Kline and Kreider, Auctioneers

Public Sale of Farm Machinery and Some Household Located in Mifflin Co., 3 mi northeast of Belleville, PA on Maple Grove Rd Mr and Mrs John W Spicher, Owners Mark Glick, Auctioneer

TUES MAR. 15 - 9 A M

WED MARCH 16 - Kellerdale Holstein Milking

Herd Dispersal Located on the farm, 1 mi west of Waynesboro, PA along Rt 16 Ralph Horst, Sale Manager, Horst and Stull, Auctioneers

WED. AND THURS MARCH 16 and 17 - Public Sale of Cranes and Const Material Located in Salem, NJ Vilsmeier Auction Co. Inc

WED MARCH 16 - 1 30 P.M. Public Sale of Farm Located in Chester Co., Lower Oxford Twp., 3 mi north of Oxford on Bethel Rd Charles and Sara Stowe, Owners Steve Petersheim, Auctioneer

THURS MAR 17 - 11 00 A M Monthly Cow Sale at Mel Kolb, Inc., Maryland Farm, Woodsboro, MD

THURS MARCH 17 Public Sale of Modern Farm Machinery and Personal Property Located at the farm, 572 Millway Rd, Lititz, PA, from Lititz go 1 mi north on Rt 501, turn east on Newport Rd., 2 mi to Millway Rd, turn left to farm Estate of Jesse Balmer Kline and Kreider, Auctioneers

WED. MARCH 17 - Public Sale of Holstein First Calf Heifers Located 3 mi north of Chambersburg, PA along Funk Rd Gerald and Mabel Hammond, Owners Ralph W Horst, Auctioneer

FRI MARCH 18 - Public Consignment Sale of Farm Equipment Located in the village of Reistville DJ Implementations 717-949-3074

FRI MARCH 18 - 5 30 P.M. Public Sale of Tractors, Trucks and Etc Located at the Kempton Community Center 12 Auctioneers

FRI MARCH 18 - 6 30 P.M. Consignment Sale of Feeder Cattle and Feeder Pigs by Keister's Middleburg Auction Sales, Inc Rt. 555 3 miles East of Middleburg, 5 miles west of Selinsgrove, Pa Don and Walt Keister, Owners, Ray Long and Dave Imes, Auctioneers



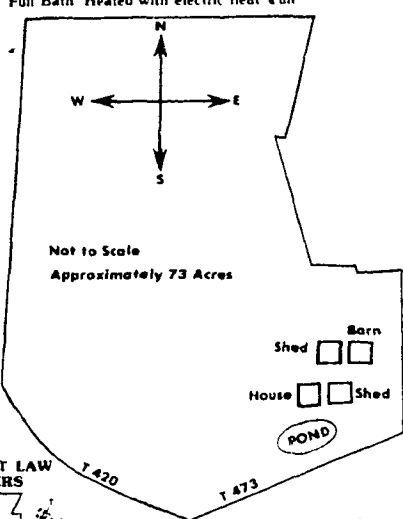
PUBLIC SALE OF VALUABLE REAL ESTATE

SATURDAY, MARCH 19, 1983
AT 2:30 P.M.

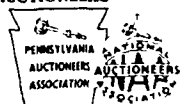
LOCATED APPROXIMATELY 4 MILES SOUTH OF SUNBURY, PENNSYLVANIA, 2.3 MILES OFF ROUTE 147. TAKE LR-49025, FOLLOW PUBLIC SALE SIGNS.

FARM

- * 73 ACRES, more or less with approximately 58 acres tillable 14 acres of woodland 1 acre for the homestead
- * Situate in Lower Augusta Township, Northumberland County
- * 2 1/2 STORY FRAME HOME, COMPLETELY REMODELED 1st Floor having Living Room with wall-to-wall carpeting, fireplace with woodburner, Kitchen Dining Area with island bar, wall to wall carpeting Laundry Room Full Bath Enclosed Porch with sliding glass doors leading to open deck 2nd Floor having 4 Bedrooms with wall to wall carpeting Full Bath Heated with electric heat Full basement with concrete floor
- * 3 Car SEMI-ATTACHED BLOCK GARAGE
- * FARM POND ADJACENT TO HOME
- * 38' x 60' METAL BUILDING BUTCHER SHOP with loft storage
- * 28 x 100' METAL BUILDING HOG BARN with automatic feeders
- * 30' x 56' BANK BARN WITH 36' x 56' ATTACHED POULTRY HOUSE
- * 20 x 50 A O SMITH / HARVESTER SILO - (2) 5 Ton and (1) 4 Ton Storage Bins (Silo will be offered for sale separately and as a unit with farm)



RICE, BOOP & STORASKA, ATTORNEYS AT LAW DOCKEY, DOCKEY & DEPPEN, AUCTIONEERS



MID-PENN BANK, OWNER