

# Livestock market and auction news

## St. Louis Cattle

Thursday, Feb. 17

Report supplied by USDA

Receipts This Week 4,700  
Week Ago 4,300  
Year Ago 5,300

Compared with the previous week, Slaughter Steers .50-1.00 lower. Slaughter Heifers weak to .50 lower. Cows fully 2.00-3.00 lower, instances 4.00 lower, most decline on boning Utility. Bulls 1.00-2.00 lower. Slaughter supply mainly Choice and Mixed Choice and Prime Slaughter Steers, around 35% Heifers and 10% Cows.

**SLAUGHTER STEERS:** Mixed Choice and Prime 2-4 1050-1250 lbs. 60.00-60.50, part load 60.75. Choice 2-4 950-1275 lbs. 59.00-60.00. Mixed Good and Choice 2-4 900-1200 lbs. 58.00-59.50. Good 2-3 900-1150 lbs. 56.00-58.00. Standard to Good 2-3 1050-1300 lbs. Holsteins 46.00-51.00.

**SLAUGHTER HEIFERS:** Mixed Choice and Prime 2-4 875-1075 lbs. 58.00-58.50, couple packages 59.00. Choice 2-4 800-1050 lbs. 56.50-58.00. Mixed Good and Choice 2-3 800-1000 lbs. 55.00-57.00. Good 2-3 750-975 lbs. 53.00-55.00.

**COWS:** (Closing week sales)

Utility and Commercial 2-4 37.00-40.00. Boning Utility 1-2 40.00-42.00, several 40.00-41.00. Few high-yielding Utility 42.00. Cutter 1-2 36.00-40.00. Canner and Low Cutter 1-2 32.00-36.00.

**BULLS:** YG 1-2 1000-1900 lbs. 46.00-52.00.

Wednesday's week sheep auction. Receipts about 350 head. Compared last Wednesday, Slaughter Lambs 2.00 to mostly 3.00 lower. Supply mainly woolled and shorn slaughter lambs. Insufficient volume other classes to test prices.

**SHORN SLAUGHTER LAMBS:** Choice and Prime 86-122 lbs. with mostly No. 1-2 pelts 58.00-61.00. Few lots Choice 65-75 lbs. 53.00-55.50.

**WOOLED SLAUGHTER LAMBS:** Choice and Prime 85-145 lbs. 54.00-56.50. Few lots Choice 65-75 lbs. 51.00-54.00.

**FEEDERS:** (including around 1,800 at the regular Thursday Auction.) Feeder Steers and Heifers firm to 3.00 higher, mostly 1.00-2.00 higher. Overall quality rather attractive with large share Medium Frame 1 350-800 lb. Steers

and 350-600 lb. Heifers. Buyer attendance fairly large.

**FEEDER STEERS:** Medium, few Large Frame 1: 350-500 lbs. 70.00-75.00; 500-600 lbs. 68.75-72.25; 600-700 lbs. 65.00-67.75; 700-875 lbs. 63.00-65.00. Medium frame 1-2 and some small frame 1: 300-600 lbs. 62.25-67.00; scattered lots fleshy 600-825 lbs. 57.00-62.00. Large Frame 2 Holsteins: lot 540 lbs. 57.50; several lots 600-875 lbs. 48.00-53.75.

**FEEDER HEIFERS:** Medium, few large fraem 1: 300-500 lbs. 60.00-64.00; 500-600 lbs. 58.75-63.00; 600-700 lbs. 57.00-59.25. Medium Frame 1-2 and few small frame 1: 350-600 lbs. 52.25-58.00.

**STOCK COWS:** Couple lots Small and Medium frame 1-2 785-795 lb. Young and Middle Aged 35.00-40.75.

## Belknap Livestock Auction

Dayton, Pa.

Tuesday, Feb. 16

Report supplied by PDA

**CATTLE 91:** Compared with last Wednesday's market; Supply included 60% cows. Few Standard

slaughter steers 48.00-52.50. Few Standard slaughter heifers 45.00-49.50. Utility & Commercial slaughter cows 40.00-42.50, couple 43.50-44.00, Cutters 36.50-40.50, Canner & Low Cutter 30.50-36.75, Shells down to 29.25. Few Standard slaughter bullock 45.00-48.00. Few Yield grade #1 1235-1645 lbs. slaughter bulls 48.00-50.75, one at 57.00. Few Medium Frame #1 350-640 lbs. feeder heifers 45.00-48.50; few Medium Frame #1 580-660 lbs. feeder bulls 50.00-54.50.

**CALVES 65:** Few Choice vealers 91.00-100.00, few Good 76.00-90.00, Standard & Good 90-110 lbs. 55.00-65.00, 65-85 lbs. 43.00-55.00. Farm calves, hositein bulls 90-125 lbs. 60.00-87.00.

**HOGS 163:** US No. 1-2 210-255 lbs. barrows & gilts 59.00-60.25, No. 1-3 210-255 lbs. 58.00-59.00, few No. 2-3 200-280 lbs. 57.00-57.50, No. 1-3 145-195 lbs. 45.00-53.00. US No. 1-3 310-625 lbs. sows 51.50-58.00, few Medium 270-360 lbs. 45.00-49.00. Boars 42.00-47.00.

**FEEDER PIGS 33:** Few US No. 1-3 30-40 lbs. feeder pigs 31.00-44.00 per head.

**SHEEP 4:** Few Slaughter ewes 18.00-18.50.

## G&M Livestock

Duncansville, Pa.

Monday, Feb. 14

Report supplied by Auction

**SLAUGHTER CATTLE:** Steers choice 60.00-64.10, good 54.00-60.00, Standard 50.00-54.00, Utility 46.00-50.20; Heifers Choice 59.00-63.95, Good 54.00-59.00, Standard 50.00-54.00, Utility 46.00-50.00; Cows Choice 46.00-49.00, Good 44.00-46.00, Standard 41.00-44.00, Utility 40.00-42.00, Cutters 39.00-40.25, Canners down to 35.00; Bulls 1100-2050 lbs. 53.00-59.50, 900-1100 lbs. 49.00-56.00.

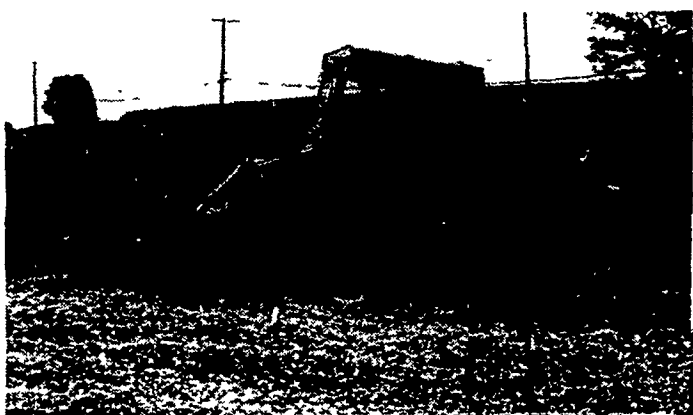
**FEEDER CATTLE:** Steers Choice 300-600 lbs. 52.00-64.00, Heifers Choice 300-700 lbs. 47.00-56.00. **CALVES:** Vealers prime and high Choice 90.00-103.50, Good and Choice 70.00-90.00, Standard 55.00-70.00, Utility down to 40.00; Farm Calves, Holstein Bulls 90-120 lbs. 90.00-104.50, Heifers 90-120 lbs. 70.00-92.50.

**HOGS:** Barrows and Gilts 200-240 lbs. 58.00-60.75; 170-300 lbs. 55.00-59.00; Sows 300-600 lbs. 55.00-60.50.

**FEEDER PIGS:** 35-50 lbs. 50.00-59.00.

**SHEEP:** Slaughter Lambs 90-100 lbs. 56.00-69.50; Ewes 12.00-26.00. Goats 15.00-39.00 per head.

# BIG FARM POWER AND EQUIPMENT



# DOES YOUR LOADER DO THIS?



**THE  
VERSATILE  
160 LOADER  
DOES...AND MORE  
MUCH, MUCH MORE.**

**...CHECK THESE FEATURES...**

- ... 85 HP Waukesha Engine
- ... 3 Point Hitch & Live PTO
- ... Bi-Directional Controls
- ... Hydrostatic Transmission
- ... Live Remote Hydraulics
- ... Cab w/Air & Heat

ALL NEW AND USED  
PRODUCTS BACKED  
BY  
**HOOBER  
PARTS  
& SERVICE**

**YOU CAN AFFORD A VERSATILE**  
**C. B. HOOBER & SON, INC.**      **HOOBER EQUIPMENT, INC.**  
INTERCOURSE, PA      MIDDLETOWN, DE  
717-768-8231      (302) 378-9555