

Poultry Markets

N. E. Weekly Shell Egg Report

Tuesday, Feb. 8
Report supplied by USDA
Prices paid per dozen Grade "A" Brown eggs in cartons delivered to retail stores:

	Ex. Large	Large	Medium	Small
MASS. X	85-87	82-84	70-72	52-54
Mostly	85	82	70	52
N. HAMP.	78-80	73-77	61-65	45-49
Mostly	78	75	63	47
R.I.	78-83	75-80	63-68	47-54
Mostly	78-79	75-78	63-64	47-52
VERMONT	89-98	85-95	73-79	-
Mostly	98	95	77	-
MAINE	83-85	80-82	68-70	52-54

X Includes Central and Western Sections only.

Nest Run Eggs

Prices are from Egg Clearinghouse, Inc., (ECI) Durham, N.H. and reflect trading prices for gradable nest run eggs (GNR) on ECI, a nationwide trading center for producers, packers and marketers. GNR eggs are classified by weight in 30-dozen cases, and traded in lots of either 300 or 750 cases. Prices are FOB buyers dock, and are computed Tuesday and Thursday of each week. This week's prices for each classification were:

Classification	Per Case	Tuesday	Thursday
Class 1 - Large	48 lbs.	48	51
Class 2 - Large	45 lbs.	43	46
Class 3 - Medium	42 lbs.	41½	42
Class 4 - Small	39 lbs.	38	38
Breaking Stock	48 lbs.	40	41
Checks	48 lbs.	35½	36½

Philadelphia Eggs

Thursday, Feb. 10
Report supplied by USDA
MARKET COMMENT: Undertone firm on larger; steady on medium. Carton egg orders irregular. Some traders report good movement generally due to retail features; others find orders generally flat. Graded large fully adequate to ample. Little interest in graded product. Some interest being shown for class I & II, but usually filled locally. Medium in surplus and difficult to clear.
Prices to retailers: Sales to volume buyers, consumer grades white eggs in cartons delivered store door:
A Extra Large 63-69; A Large 62-64; A Medium 54-57.

Eastern Pa. & N.J. Poultry

Thursday, Feb. 10
Report supplied by USDA
MARKET COMMENT: Pricing is ¼-cent lower today for next week's arrival. Supply of light-type adequate for current needs. Canner sales fair for fully adequate supply.
Light Type Hens: 9¼-10½, mostly 9¼ prices paid at farm.
F.O.B. plant: 11¼-12½, mostly 11¼.

Weekly New York Egg Market

	From Friday, Feb. 4 to Feb. 11				
	Fri.	Mon.	Tues.	Wed.	Thurs.
WHITE					
Jumbo	74	74	74	75	76
Ex Large	69	69	69	70	71
Large	65	65	65	66	67
Mediums	58	58	58	58	58
Pullets	49	49	49	49	49
BROWN					
Jumbo	-	-	-	-	-
Ex Large	82	82	82	82	82
Large	77	77	77	77	77
Mediums	58	58	58	58	58
Pullets					
Peewees	Unquoted				
Off Grade					
Large	58	58	58	59	60
Checks	33	33	33	34	34

Breaking Stock: Friday - Thursday, 12.00-12.60.

Carlisle Auction

Carlisle, Pa.
Tuesday, Feb. 8
Report supplied by auction
CATTLE: Steers were steady; Heifers were 1.00 higher; Cows were steady and Bullocks were steady. Steers: Choice 59.75-61.00; Good 57.50-58.75; Standard 53.00-57.00; Utility 50.00 down. Heifers: No Choice offered; Good 49.75-57.50; Standard 45.50-46.00; Utility 44.00 down. Cows: Very active! No High Yield cows offered; Utility & Commercial 41.75-44.85; Cutter 38.85-42.00; Canner & Low Cutter 36.35-39.00; Shells 34.75 Down. Bullocks: Standard 48.00-53.00; Utility 47.00 down.
FEEDER CATTLE: Steers were steady; Heifers were steady to 2.00 lower; Bulls were 2.00 higher. Steers: 305 lbs 63.00 individual; Medium 435-475 lbs. 48.00-49.00; Medium 555-630 lbs. 46.00-48.50; Good 580-585 lbs. 57.00-57.50; Heifers: Good 340-361 lbs. 52.00-57.00; Good 460-495 lbs. 47.00-51.50; Medium 480-495 lbs. 37.00-44.00; Good 605-710 lbs. 47.50-50.50; Medium 600-745 lbs. 37.00-43.50. Bulls: Good 450-630 lbs. 51.50-60.00.
CALVES: Active with very strong demand! Vealers were 21.00 higher! Vealers Choice 99.00-117.00; Good 85.00-95.00; Standard & Good 70.00-85.00; Standard 60.00-75.00; Standard & Light 65.00 down. Farm Calves: Hol. bulls 97.00-106.00; Hol. Heifers 80.00-85.00.
HOGS: Very active; steady to 50 higher; US No. 1-2; 59.50-62.10; US No. 1-3, 59.00-59.25; US No. 2-3, 55.25-59.00; Sows: US No. 1-3 55.00-58.50; No. 2-3 47.50-53.50; Boars: 1.50 higher! 43.50-43.74.
FEEDER PIGS: US No. 1-3, 28-32 lbs. 41.00 head. US No 1-3, 85 lbs. 65.00 head.
SHEEP: Lambs Good 64.00-65.00; Goats: 30.00-53.00 head.

Delmarva Poultry

Wednesday, Feb. 9
Report supplied by USDA
MARKET COMMENT: RTC movement on whole birds has bounced back a little with most plants having a fairly good call. Breasts and wings moving well legs spotty but slightly better in most quarters. Slaughter schedules moderate; live supplies adequate to fully adequate.
Today's L.T.L. asking prices 2-3 cents higher on U.S. Grade A at 50-52 cents.
Estimated slaughter of broiler fryers in Delmarva (000).
Estimated 2/10 1,838; Actual 2/3 1,848; Actual 2/8 1,816; Average Weights 2/8 4.19; 2/1 4.24.


New York Multiple Drop Broiler Report

Thursday, Feb. 10
Report supplied by USDA
Current broiler/fryer negotiated prices for immediate delivery includes mostly multiple-drop shipments to New York City from Delmarva.
RANGE: U.S. Grade A 50-52; 1,650 boxes; Branded U.S. Grade A 52; 7,696 boxes.
WTD. AVG.: U.S. Grade A 50.84; Branded 52.00.

ROPE IN SOME EXTRA CASH!

Advertise With A Lancaster Farming CLASSIFIED AD...

Phone: 717-394-3047 or 717-626-1164



NOTICE

Due to changes in the J.M. Hooper, Inc. hog division, consign your cattle and hogs to Louis Lyons and Son, managed by Charles Diller. They are happy to have Burnell Siegrist as their dependable buyer and seller. They offer choice service, excellent sorting and marketing of your cattle, hogs, feeder pigs and calves.

Business Phone - 394 7915
Home Phone - 626-8653

Experienced Personnel Immediate Weighing



ATTENTION FARMERS

EVERY MONDAY
HATFIELD PACKING CO. and
BAUMS MEAT PACKING

Will Receive Your
Hogs and Cattle at the

DANVILLE LIVESTOCK MARKET
RD4, Danville, PA

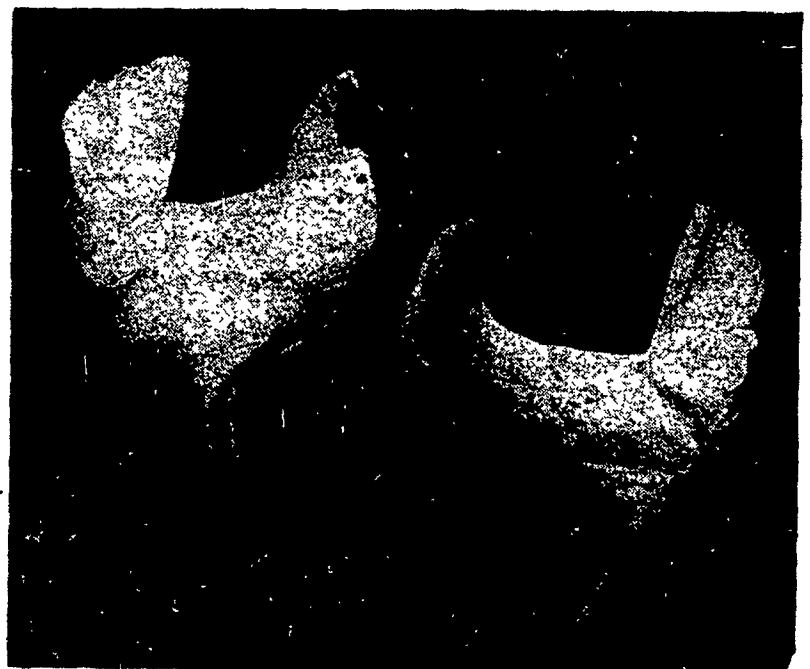
- We will receive your hogs from 8 AM to 12 Noon every Monday. Your hogs will be weighed and paid for immediately.
- We will also accept your sows & boars.
- Your cattle will be received from 12 Noon to 4 PM. We will either pay for your cattle immediately or you may sell them dressed weight.
- There will not be a commission or yardage fee deducted from your check.
- You may call our office Monday morning and we will be able to tell you the base price for hogs for the day.
- Please come and give us a chance to continue doing business with you through this method.

FOR INFORMATION CALL
717-275-2880



Two Ways To Improve Your Profit Picture XL & DK

Two layers with distinctly different characteristics... From two separate research programs.
You don't have to buy from two different companies to get the two top layers on the market.
The XL shows excellent production under many management conditions. The DK responds best to finely tuned, close management.
DEKALB Layers are bred to possess the economic traits most applicable to your operation. You do have a choice... The high productivity XL or the high efficiency DK.



Moyer's CHICKS, INC.

DEKALB Quakertown, PA 18951 HUBBARD
BROWN & WHITE (215) 536-3155 WHITE MT
EGG LAYERS BROILERS

Copyright 1983 by Lancaster Farming
P.O. Box 368 - Lititz, PA 17543
Office: 22 E. Main St., Lititz, PA 17543
Record-Express Office Building
Phone: Lancaster 717-394-3047
or Lititz 717-626-1164

Robert G. Campbell, Publisher
Sheila M. Miller, Editor
Dick Anglestein, Staff Writer
Debra L. Koontz, Home Editor

CORRESPONDENTS

Donna M. Tommelleo, Adams County
Littlestown 717-632-1731
Patty Gross, Bedford, Blair, Huntingdon counties
Martinsburg 814-793-4256
Jane Bresee, Bradford County
Ulster 717-358-3346
Beth Hemminger, Cumberland, Franklin
and Perry counties
Newville 717-486-5322
Sally B. Bair, Lancaster County
Columbia
Joyce Bupp, York County
Seven Valleys

Subscription Price:
\$7.50 per year; \$13.00 - 2 years
\$14.00 per year outside of
PA, NJ, MD, DE, NY, VA & WV

Established November 4, 1955
Published every Saturday
by Lancaster Farming, Lititz, PA
Second Class Postage paid at
22 E. Main St
Lititz, PA 17543 ISSN0023-7485

For address change form or new
subscription see Mailbox Markets.
Members of Newspaper Farm Editors Assn.,
Pa. Newspaper Publishers Association,
and National Newspaper Association.