

Livestock market and auction news

Oklahoma Cattle

Thursday, Feb. 10
 Report supplied by USDA
 Cattle and Calves 400
 Same Day Last Week 362
 Cattle Auction: Feeder Steer and Heifer trends not fully tested. Slaughter Cows steady to firm; cow demand good. Bulls scarce. Bulk supply Medium Frame 1 500-650 lb. Feeders, mostly Steers. Actual auction sales 337 head with 74 of these cows. Total sold at auction Wednesday 4460 head.
FEEDER STEERS: Medium Frame 1 500-560 lb. 67.80-69.80; 600-650 lb. 67.40-68.25; pkg. 805 lb. 65.10.
FEEDER HEIFERS: Medium Frame 1 395 lb. 64.20; 585 lb. 60.00. Small Frame 1 545 lb. 57.50. Medium Frame Mixed 1-2 500-550 lb. 54.50-58.00.
SLAUGHTER COWS: High-Cutter and Utility 2-3 Holsteins 43.75-45.00, consignment 1230 lb. Charolais 46.50, young mates 935 lb. 45.50. Cutter 970 lb. 41.00.
BULLS: Package 1075 lb. very thin 40.25. YG 1 1700-1850 lb. 53.00; 1230 lb. 50.00.
FOR THE WEEK: Compared to late last week, Feeder Steers and Heifers 1.00-3.00 higher. Mud continues to cause problems in the movement and care of livestock. Slaughter cows 1.00-3.00 higher. Utility 2-3 42.50-45.00, lot 1230 lb. Charolais 46.50; low-dressing 39.00-42.50; Cutter 1-2 40.00-43.50; Canner and low-cutter 33.75-38.75. Reduced numbers resulting in keen competition for cows. Some packers have cut back their kill levels. Bulls 1.50-2.00 higher. YG 1-2 1125-1850 lb. 49.75-53.75. Salable receipts this week near 6200 head, last week 3764 and a year ago 6765. Run near 86 percent Feeder Steers and Heifers; 14 percent Slaughter Cows and Bulls.

Four States Livestock

Hagerstown, Md.
 Wednesday, Feb. 2
 Report supplied by auction
SLAUGHTER: Fed Steers- Good Run. 2.00 higher. Choice 60.00-62.50; Good 55.00-59.00; Medium 54.00 down. Heifers- Choice 56.00-59.25; Good 51.00-55.00; Medium 50.00 Down. Cows- 1.00 higher. High Yield 42.50-44.50; Average 39.50-42.00; Big Middle 37.00-39.00; Fatty Herf. 38.00-38.00; Shelly 38.00 down. Fat Bulls- 1.50 higher. Good 50.00-54.00; Medium 46.00-49.00. Veal Calves- No Choice offered. Steady Prices. Good 80.00-93.00; Medium 70.00-79.00; Farm Hfns. 60.00-79.00; Farm Bulls 65.00-94.00; Light & Weak 50.00 Down. Lambs- Few offered. Medium and Good 54.00-56.50.
STOCKER: Steers 300-550 lbs. Very active. steady prices. Choice 61.00-65.00; Good 56.00-60.00; Medium 51.00-55.00; Culls 50.00 Down. Steers 600-850 lbs. Choice 59.00-63.00; Good 54.00-58.00; Medium 53.00 Down. Heifers (All weights) Choice 56.00-61.50; Good 50.00-55.00; Medium 49.00 down. Dairy Cows to 810.00. Pigs, hd.- Strong demand, steady prices. 20-30 lbs. 35.00-44.00; 40-60 lbs. 45.00-59.00. Shoats by lb. 50.00-70.00. Slaughter Hogs- 1.00 higher. 210-230 lbs. 59.00-60.60; 240-260 lbs. 58.50-59.85; 270-325 lbs. 55.00-58.25. Sows- 350-600 lbs. 52.50-58.00. Stock Bulls- Choice 60.00-65.50; Good 52.00-59.00; Medium 51.00 down.

G & M Livestock

Duncansville, Pa.
 Monday, Feb. 7
 Report supplied by auction
SLAUGHTER CATTLE: Steers choice 60.00 to 63.90, good 56.00 to 60.00, standard 52.00 to 56.00, utility 47.00 to 52.00; heifers choice 60.00 to 63.35, good 52.00 to 60.00, standard 42.00 to 52.00, utility 43.00 to 48.00, cows choice 44.00 to 47.00, good 42.00 to 44.00, standard 40.00 to 42.00, utility 32.00 to 40.00, cutters 36.00 to 39.00, canners down to 34.00; bulls 11.00-2120 lbs. 50.00 to 59.50, 900-1100 lbs. 46.00 to 54.00.
FEEDER CATTLE: Steers choice 300-600 lbs. 50.00 to 62.00, heifers choice 300-600 lbs. 48.00 to 56.00 medium and good.
CALVES: Vealers prime and high choice none. Good and choice 80.00 to 90.00, standard 60.00 to 80.00, utility down to 35.00; farm calves, Holstein bulls 90-120 lbs. 70.00 to 98.00, heifers 90-120 lbs. 65.00 to 87.50.
HOGS: Barrows and gilts 200-240 lbs. 58.00 to 61.90; 170-300 lbs. 55.20 to 59.00; sows 300-700 lbs. 54.00 to 59.25.
FEEDER PIGS: 25-35 lbs. 28.00 to 37.00 per head; 35-50 lbs. 37.00 to 56.00.
SHEEP: Slaughter lambs 90-110 lbs. 50.00 to 66.00.

North Jersey Livestock
 Hackettstown, N.J.
 Tuesday, Feb. 8

Report supplied by auction

959 head.
 Calves 34.00-46.00; Cows 32.75-48.00; Easy Cows 16.50-38.50; Reactor Cows 39.50; Heifers 40.00-56.50; Bulls 35.00-58.50; Steers 42.00-58.50; Hogs 55.00-61.00; Roasting Pigs, each 12.00-29.00; Kids 5.00-50.00; Boars 48.00-49.25; Sows 53.50; Sheep 21.00-45.00; Lambs, each 21.00-65.00; Lambs per lb. 47.00-80.00; Goats, each 20.00-77.50; Hides 5.00-10.00.

New Holland Dairy

New Holland Sales Stables
 Wednesday, Feb. 9
 Report supplied by auction
 Reported receipts of 98 cows, 83 heifers and 0 bulls. Market steady.
 Load of Susquehanna Co. fresh cows, 790-1120; Load of N.Y. fresh cows, 1050.00-1350.00, springers 860.00-1310.00. Load of PA fresh cows, 780.00-1150.00; Load of Pa. fresh cows, 975.00-1275.00; Load of Pa. fresh cows, 690.00-1065.00; Load of Canadian fresh cows, 670.00-1110.00, springers 870.00-970.00. Load of Pa. springers 770.00-970.00.
 Locally consigned cows 440.00-1100.00.
 Springing heifers 590.00-1070.00.
 Open heifers 225.00-1475.00.
 Purebred 1165.00-1330.00.
 Lf must Pa. Grain
 bjh

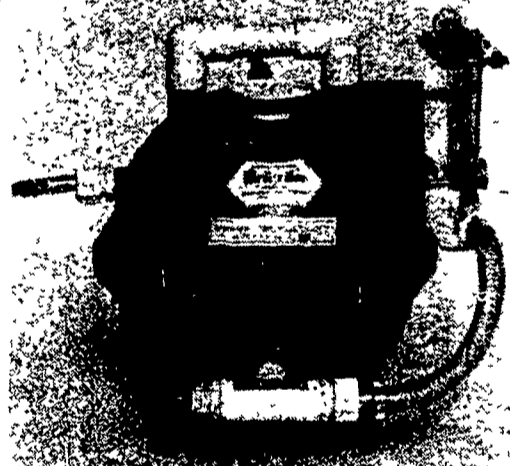
Belleville Livestock

Belleville, Pa.
 Wednesday, Feb. 9
 Report supplied by PDA
CATTLE 182: Compared with last Wednesday's market, slaughter cows 1.25-2.00 higher. Few Standard and Good slaughter steers 52.50-56.00. Couple Standard slaughter heifers 51.75 and 56.25. Utility & Commercial slaughter cows 41.50-45.50, couple 48.75, Cutters 39.50-41.75, few Canner & Low Cutters 37.00-41.10. Few Yield Grade #1, 990-1100 lbs. slaughter bulls 44.50-47.25.
CATTLE 183: Few Choice vealers 94.00-108.00, Standard and Good 70-100 52.00-60.00, Utility 50-85 lbs. 40.00-50.00. Farm Calves: Holstein Bulls 90-125 lbs. 65.00-91.00, mostly 75.00-88.00.
HOGS 184: Barrows and gilts .75-1.00 lower. US No. 1-2 206-235 lbs. barrows and gilts 59.35-59.75, 3 head at 60.00, No. 1-3 210-250 lbs. 58.75-59.50. US No. 1-3 275-550 lbs. sows 57.50-59.50. Boars 36.00-44.50.
FEEDER PIGS 241: US No. 1-3 35-45 lbs. feeder pigs 43.00-54.50 per head, No. 1-3 45-65 lbs. 53.00-68.00, Utility 25-35 lbs. 24.50-32.00 per head.
SHEEP 5: Few Slaughter ewes 16.00-18.00. **HOLSTEIN DAIRY COWS** 600.00-1320.00, **COUPLE** 1575.00; **BRED AND OPEN HEIFERS** 375.00-700.00 **PER HEAD.**

(Turn to Page A34)

MEDICATE YOUR FARM ANIMALS ACCURATELY

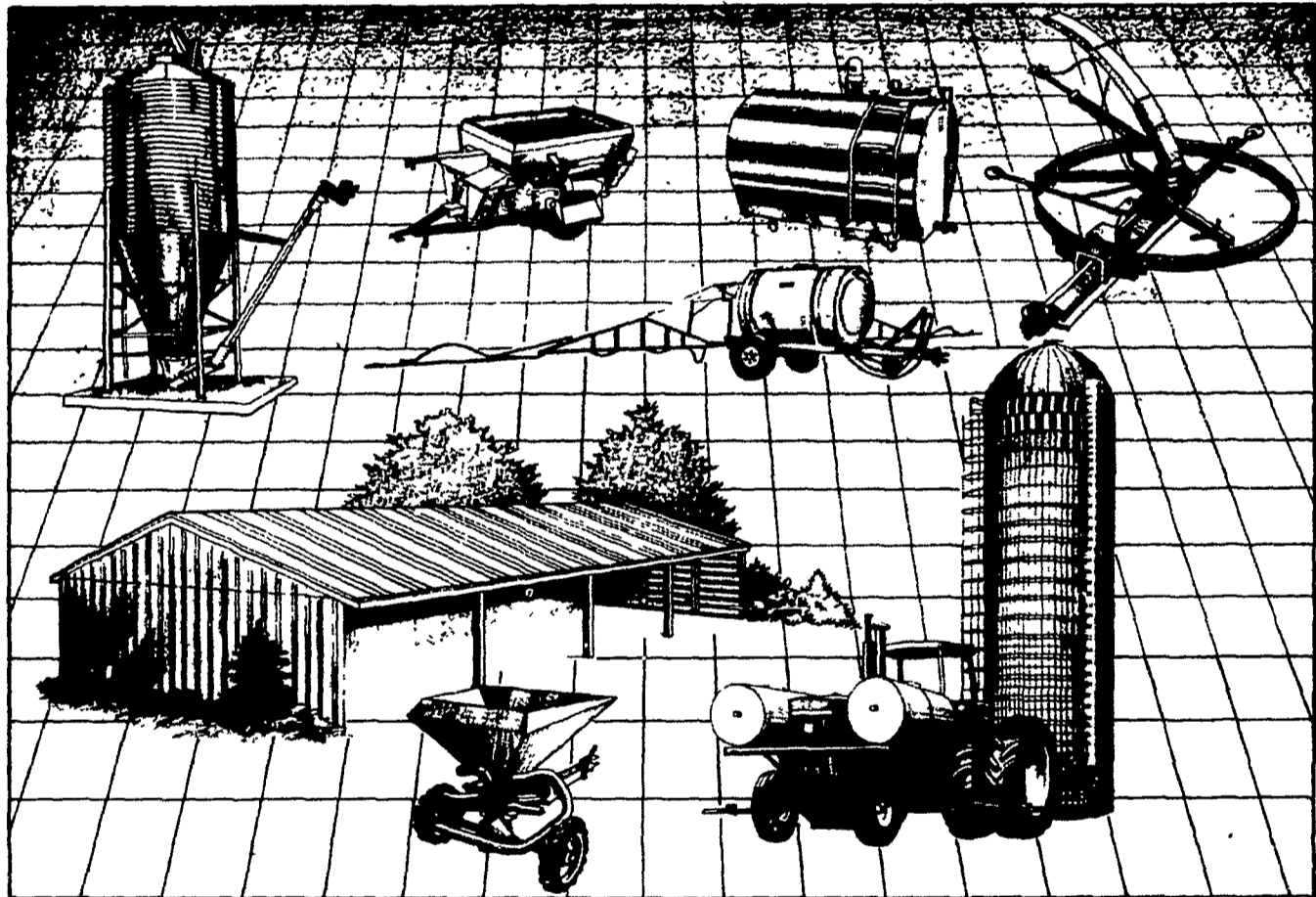
Simple valve adjustment permits wide range of proportional settings...



- ✓ **MANIFOLD METERING:** You can tell at a glance if proportioner is operating properly. NO MORE guessing or hoping. VISUAL read out scale lets you monitor treatment instantly
- ✓ **NO WATER SHUT OFF:** The Medi-cator will not stop the flow of water regardless of how little the flow.
- ✓ **TROUBLE FREE.** The most trouble free Medi-cator available. No troublesome moving parts to maintain. A simple clean water bath after using is all that is needed.
- ✓ **WARRANTY:** A full one year limited warranty against defective workmanship comes with each Medi-cator.
- ✓ **NO ELECTRICITY NEEDED:** You may move your Medi-cator from location to location if you prefer. The Medi-cator operates solely from water pressure, ranging from 3 lbs to 60 lbs
- ✓ **LOW WATER FLOW?** The Medi-cator will proportion medication with water flow as low as 1 pt per minute or as high as 4 gallons per minute. Ideal medicator for any size operation. It is totally controlled by water flow. When the flow stops the medication stops

ZIMMERMAN'S ANIMAL HEALTH SUPPLY

RD 4, Box 141 Lititz, PA 17543
 717-738-4241
 3 Miles West of Ephrata Along Wood Corner Road



An idea to keep in mind...

NEED A NEW BUILDING? A FEEDING OR OTHER SYSTEM? CROPS EQUIPMENT? LEASE IT THROUGH TELMARK

It's not the ownership but the use of equipment that produces profits. And you can have that use now... by leasing through Telmark. A Telmark Agri-Lease covers almost any type, make or model of durable equipment or farm machinery—new or used. For details, fill out and mail the coupon today to: Telmark, Box 4943, Syracuse, New York 13221.

AGRI-LEASE FAST ACTION INFORMATION REQUEST

Please have someone call me about the equipment listed below. I understand that this request for information does not commit me in any way.



NAME _____ (PLEASE PRINT)
 ADDRESS _____
 TOWN _____
 STATE _____ ZIP _____
 PHONE _____ BEST TIME TO CALL _____
 EQUIPMENT WANTED _____