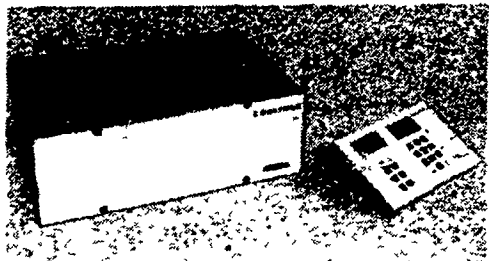


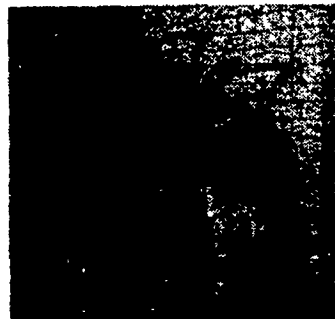
WESTFALIA

FOR PROGRESS IN MILKING TECHNOLOGY

CODATRON— The Westfalia Feeding & Control System For All Dairy Herds



- Individual dispensing of concentrate feed in the slatted unit
- Choice of one or two types of feed
- Maximum ration limit at all intervals
- Savings in concentrate feed
- Higher milk yields
- Time-saving feeding
- Higher butterfat content in the milk
- Better physical condition of the cows
- Cow calendar



Automatic Feeder

The feeders are of stainless steel, durable and easily cleaned. The feeder comprises a housing with feed inlet,

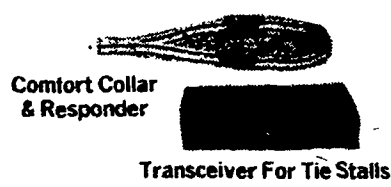
feeding trough and transmitter/receiver unit. The transmitter/receiver unit is mounted at the front of the trough.

Model F-26

- CODATRON feed program with 24-hour cycle (24 intervals)
- Input and readout of feed amounts in lbs.
- Maximum amount limit in each interval
- Simple checking of problem cows (more than 9% residual feed)
- Stored data preserved in the event of power failure
- Optional automatic or manual start of the feeding program
- Feeding program extensible to max. 999 cows
- Connections for up to 26 automatic feeders
- Printer connection
- Choice of one or two types of feed
- Additional reading of
 - contents of silo tank
 - daily consumption
 - daily consumption per feeding box (for all types of feed)
- A percental increase or reduction of the daily feed ration can be implemented for the whole herd (changes in the quality of the feed).

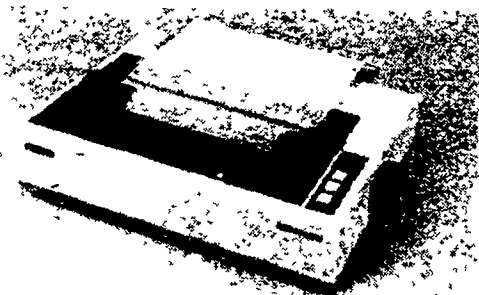


Power Supply Unit

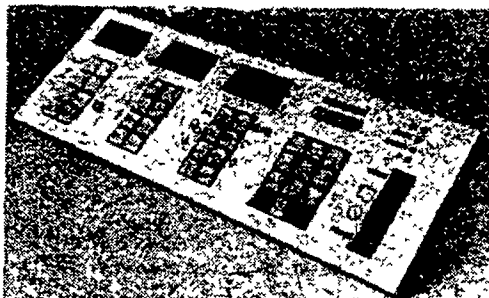


Comfort Collar & Responder

Transceiver For Tie Stalls

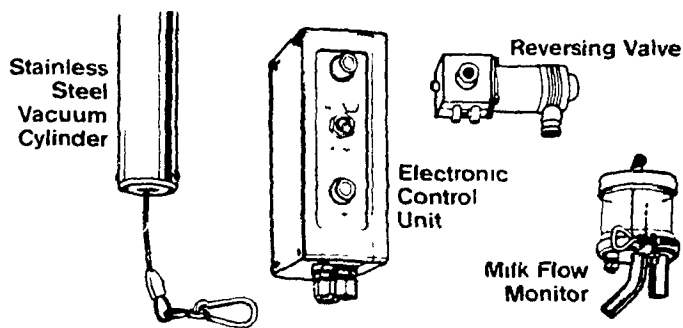


A printer can be supplied on request for the models F 26 and L which prints out the data stored in the central computer either automatically or on request. The printer is a useful extension to the cow calendar and is practically indispensable for herd management. Uses standard 8 1/2" x 11" computerized paper - not an adding machine type paper.



- Cow calendar
 - input of calving date
 - rutting season and with calving-time control
 - determination of lactation stage
 - input of date of dry time
 - start of concentrate feeding before calving
- The control panel already has the functions for milking parlour operation (storage of the various data for each cow).

Westfalia ACR Detacher



Save Up To 50% In Manhours

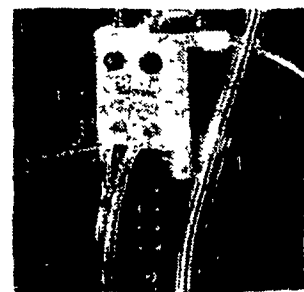
MORE FROM YOUR COWS
MORE FROM YOUR TIME
MORE FROM YOUR MONEY

Why settle for less when you can have the original?

- Precise automatic flow monitoring.
- New memory strip time.
- Positive vacuum shut-off.
- Gentle, delayed removal.
- Full flow non-plug design.
- Installs in any dairy.
- Operation is simple.

VISOTRON

A foolproof modern method of doing an old-fashioned job in stanchion barns.



Through constant upgrading and evaluation, Westfalia has developed the new Visotron Automatic Milker Control.

For total economy and efficiency, turn to Westfalia's Visotron for today's method of handling yesterday's problem!

WESTFALIA MILKING EQUIPMENT AND COMPUTER SALES CENTERS

BALLY Longacre Electric Service, Inc. 215-845-2261	COCHRANVILLE Farm Construction & Equipment Robert L. Janney 215-593-2365	LITITZ Agri-Tek 717-627-3000	PARADISE Lloyd Ranch 717-687-6361	MT. BETHEL K.C. Dairy Service Kevin Correll 717-897-5283	SPARTANBURG Brenner Dairy Equipment Albert Brenner 814-654-7309	SALES ENGINEER PA, NJ, MD, DE ROBERT E. TURNER R.D. #1, Box 11 Aspers, PA 17304 717-677-9301
BELLEVILLE Byler's Diesel & Refrig. Service Daniel Byler	COUDERSPORT Gerner Electric 814-274-9634	McALISTERVILLE Saner Farm Systems Orlyn Saner 717-463-2606	MILLVILLE Bower Surge Service Sheldon Bower 717-458-6106 717-458-6521	REBERSBURG Tim's Diesel Service Tim Stoltzfus	TROY Dairyland Sales & Service Jim Kelley 717-297-4128	SALES ENGINEER NORTHWEST PA & NY TOM MOORE 28 Petrolia St. Bradford, PA 16702 814-362-3933
CHAMBERSBURG Cumberland Farm & Dairy Supply, Inc. Larry Hughes 717-263-0826 800-692-7406	HAMBURG Shartlesville Farm Service Daniel & Dale Wenger 215-488-1025	MIFFLINBURG Wehr's Dairy Equipment Mark Wehr 717-966-1396	MONTRORSE Ted Hirsch Comm. & Farm Refrig. Service 717-278-3607	SCHWENKSVILLE Penn Valley Cropstore, Inc. Dale Stutzman 215-287-9650 215-287-7315	SYKESVILLE, MD Dairyman Inc. Mid-Atlantic Division 301-795-2727 301-781-7020	NATIONAL HEADQUARTERS WESTFALIA SYSTEMAT DIVISION of CENTRICO 1862 Brummel Dr. Elk Grove, Ill 60007 1-800-323-6723