

Livestock market and auction news

Hay Markets

New Wilmington

New Wilmington, Pa.
Friday, Jan. 21
100 loads hay, 19 loads straw.
Alfalfa 86.00-140.00, one load 152.50; Mixed hay 43.00-117.50, mostly 50.00-95.00; Timothy hay 55.00-70.00, few 90.00; Clover few 62.50-76.00; Straw 35.00-47.50; Ear Corn 3 loads 57.50-67.00; Stubble hay few 43.00-65.00; Oats 4 loads 1.70 to 2.00 per bushel.

Green Dragon Hay

Ephrata, Pa.
Friday, Jan. 21
Report supplied by PDA
122 loads hay and 33 loads straw.
Alfalfa 70.00-159.00, mostly 80.00; Mixed hay 65.00-136.00, one load 170.00; Timothy hay, 73.00-100.00, one load 115.00; Clover, few 61.00-83.00; Orchard Grass, few 61.00-75.00; Straw 67.00-93.00; Ear Corn, 14 loads 69.00-77.00, few down to 53.00; Corn Fodder, 2 loads 62.00 and 63.00; Oats, 2 loads \$2.30 per bushel.

Frederick Co. Hay

Buckeystown, Md.
Thursday, Jan. 27
Report supplied by auction
74 loads.
Alfalfa 70.00-140.00; Alfalfa mixed two 114.00 & 129.00; Timothy 70.00-102.50; Timothy Mixed 50.00-107.50; Clover 62.50-91.00; Mixed 46.00-91.00; one Bromegrass 81.00; one Sudex 50.00; load of Round Bales 41.00; Wheat Straw 58.00-74.00; one corn 74.00; Oats 9.00 three-bu. bag; two Locusts posts 1.85 & 2.30 ea.; Firewood 38.00-68.00.

New Holland Hay

New Holland Sales Stables
Monday, Jan. 24
Report supplied by auction
183 loads; Market compared to last week slow to \$10.00 lower; Straw active and fully steady.
Alfalfa choice 125.00 - 141.00, medium quality 90.00 - 125.00, few in the 80.00's with dust or off-color; Mixed choice 160.00 - 120.00, few Choice Alfalfa & Timothy up to 138.00, Clover & Timothy mostly 90.00 - 110.00, some down to 80.00; Timothy 90.00 - 100.00 few up to 110.00; some Meadowgrass & Timothy 80.00 - 90.00; some for Mulch 57.00 - 66.00; Clover 83.00 - 106.00; Straw mostly 75.00 - 85.00; several Bright Straw up to 97.00, some off-color under 70.00; Corn 71.00 - 79.00; Firewood 35.00 - 55.00; Fodder 52.00 - 62.00.

Good's Hay

Leola, Pa.
Wednesday, Jan. 26
Report supplied by auction
194 loads.
Mixed 55.00 - 132.00; Straw 59.00 - 88.00; two Oats 2.00 & 2.10 bu.; Alfalfa 71.00 - 142.00; Corn 57.00 - 70.00; Timothy 74.00 - 101.00; one Clover 88.00; Fodder 50.00 - 65.00.

Kiester's Hay

Middleburg, Pa.
Tuesday, Jan. 25
Report supplied by auction
30 loads of Hay: Timothy 60.00-77.00; Mixed 65.00-116.00; Alfalfa 90.00-116.00.
6 loads of Straw: 52.00-60.00.
3 loads of Ear Corn: 70.00-74.00.
1 load of Oats: 1.95 bu.

Regional Hay

Friday, Jan. 21
Report supplied by PDA
(All hay No. 2 and better, prices paid by the dealers at the farm and per ton.)
Hay & Straw slow & steady to \$10 lower.
Alfalfa 95.00-110.00, few to 130.00; Mixed hay 75.00-100.00; Timothy hay 75.00-95.00; Straw 50.00-55.00, few to 70.00; Mulch 25.00-45.00.

Belleville Hay

Belleville, Pa.
Wednesday, Jan. 19
Report supplied by PDA
42 loads hay, 7 loads straw.
Alfalfa 70.00-145.50; mostly 80.00-102.50; Mixed hay 68.00-92.50; Straw 55.00-66.00.

Vintage Hay

Thursday, Jan. 27
Report supplied by auction
18 loads.
Alfalfa 60.00-88.00; Mixed 56.00-67.00; Timothy 69.00-76.00; Orchardgrass 80.00-73.00; Fodder 49.00-53.00; Straw 62.00-82.00.

Leinbach's Hay

Shippensburg, Pa.
Wednesday, Jan. 26
Report supplied by auction
35 loads.
Alfalfa 85.00-137.00; Mixed 85.00-96.00; Clover 86.00-96.00; one Timothy 85.00; Straw 50.00-55.00; Fodder 32.50-41.00; one Ear Corn 73.00.

Hagerstown Auction

Hagerstown, Md.
Wednesday, Jan. 26
Report supplied by auction
29 loads.
Alfalfa \$95 - \$172.50; Alfalfa & Grass \$82.50 - \$125; Clover & Timothy \$50 - \$100; Clover \$80 - \$110; Timothy \$90; Orchardgrass \$55; Straw \$55 - \$60; Ear Corn \$70.00.

Pa. Grain

Monday, Jan. 24
Report supplied by PDA
Compared with last Monday's market for Southeastern, Central and South Central Pa. Corn, steady to 5 cents higher. Wheat steady to weak, instances 15 cents lower. Barley & Oats steady to strong. Ear Corn steady to \$3 higher.
Prices paid delivered to dealers dock - (All prices per bushel, except Ear Corn per ton.)
Southeastern Pa.
Corn No. 2-y range 2.50-2.75, average 2.61, New Crop 2.73-2.80; Wheat No. 2 range 3.30-3.53, average 3.41, New Crop 3.30-3.40; Barley No. 3 range 1.80-2.20, few reported 2.30, average 2.08, New Crop 1.70-2.00; Oats No. 2 1.69-1.92, average 1.80; Soybeans No. 1 range 5.55-5.80, average 5.68, New Crop 5.75-5.95; Grain Sorghum #2 range 2.00, average 2.00; Ear Corn range 63.00-68.00, average 64.40.
Central Pa.
Corn No. 2-y range 2.45-2.65, average 2.55; Wheat No. 2 range 3.00-3.40, average 3.19; Barley No. 3 range 1.80-1.85, few reported down to 1.70, average 1.79; Oats No. 2 range 1.50-1.70, average 1.58; Soybeans No. 1 range few reported 5.55, average 5.55; Ear Corn 55.00-66.00, average 61.30.
South Central Pa.
Corn No. 2-y range 2.35-2.65,

average 2.45; Wheat No. 2 range 2.85-3.00, few reported 3.00, average 3.01; Barley No. 3 range 1.70-1.80, average 1.78; Oats No. 2 range 1.60-1.75, few reported 1.95, average 1.69; Ear Corn range 62.00-75.00, average 66.63.

Southeastern Central & South Central Summary
Corn No. 2-y range 2.40-2.75, average 2.56; Wheat No. 2 range 3.00-3.50, average 3.25; Barley No. 3 range 1.75-2.15, average 1.89; Oats No. 2 range 1.50-1.85, average 1.67; Ear Corn range 57.00-68.00; average 63.93.

Western Pa.
Corn No. 2-y range 2.40-2.55, few reported 2.70, average 2.51; Wheat No. 2 range 2.80-3.00, average 2.94; Barley No. 3 range few reported 1.85, average 1.85; Oats No. 2 range 1.55-1.70, average 1.61; Ear Corn range 60.00-68.00, average 64.00.



ATTENTION YORK CO. FARMERS
Looking!!! For Quality Hogs

Every Monday
HATFIELD PACKING CO.
BUYING STATION AT
SECHRIST SALES CO.
LIVESTOCK AUCTION
R.D. 1 Stewartstown, PA

- .. Top Select Price on #1 & 2 Hogs 215 - 245 lbs.
- .. We will receive your hogs from 6 AM until ???
- .. Your hogs will be weighed & paid for immediately
- .. There will not be a commission or yardage fee
- .. You may call our office Monday morning for base price
- .. Please give us a chance to market your hogs

FOR INFORMATION CALL
717-993-6130

Porkland Industries, Inc.



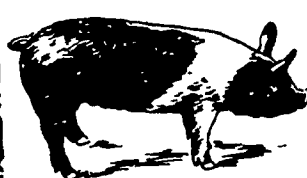
Attention:
HOG PRODUCERS

WHY GET LESS MONEY - SHIP YOUR HOGS DIRECT TO PACKER

- Your hogs will be weighed and paid for immediately at market prices.
- No commission or yardage deducted from check.
- Receiving hogs from 5 AM - 9 A.M.
- Call (717) 393-0416 for the price of hogs each day.

Ship Hogs To:
E.W. MARTIN CO.

Division of
PORKLAND INDUSTRIES, INC.
1625 Old Philadelphia Pk.
Lancaster, PA 17602



EMERY'S BUYING STATION

OPEN TO RECEIVE YOUR MARKET HOGS

AT THE GREEN DRAGON MARKET
RD 4, EPHRATA, PA 17522
1 MILE NORTH OF EPHRATA
ON NORTH STATE STREET.

HOURS
MONDAY, TUESDAY, and WEDNESDAY
6:00 A.M. to 11:30 A.M.

215-458-5677 Residence
717-733-9648 Office

YOU ARE PAID FOR YOUR HOGS IMMEDIATELY

Ken & Lois Emery, Proprietors



Be Wise...
Check our prices before you buy!!

SPRAY MATERIALS

- | | |
|------------------|-----------------|
| * ATRAZINE | * SUTAN + |
| * AATREX 90 | * BLADIX |
| * DUAL 8E | * PRINCEP |
| * BICEP | * FURADAN |
| * LASSO | * COUNTER |
| * LASSO-ATRAZINE | * DYFONATE ETC. |

MELVIN R. WEAVER

2213 Leabrook Road, Lancaster, PA 17601
Ph: 717-898-8354 or 569-6576

FRIDAY, FEBRUARY 18 ON THE FARM MONTHLY BRED GILT SALE

Sale to Start Promptly at 1:00 Every 4 Weeks

Located 18 miles south of Lancaster, Pa., 6 miles south of Quarryville, take Rt. 272 to Little Britain, turn north, follow Little Britain Road to Jackson Road, Old farm, OR take Rt. 222, out of Quarryville to Cedar Hill Road to Little Britain Road to Jackson Road. Watch for sale arrows.

50 to 60 Head

Now selling our new hybrid gilts representing mostly York & Hampshire & Landrace cross. Bred for easier & less trouble over farrowing and better weight gains.

Validated Brucellosis Free Herd #169
Qualified Pseudorabies Free Herd #55

Local Trucker Available.
No Hogs Sold On Commission.

CHRIST A. BEILER
R.D. 2, Quarryville, Pa
JOHN B. STOLTZFUSS
R.D. 1, Kirkwood, Pa

Abe Diffenbach, Auctioneer

NEXT SALE DATE MARCH 18