

PUBLIC AUCTION

**FARM EQUIP.; DAIRY CATTLE; MILK TANK
FRIDAY, FEBRUARY 11, 1983
At 11:00 A.M.**

2 miles West of Easton, turn N of US Rt. 22 onto Rt. 33 for ¼ miles to Hecktown Rd. exit, go West on Hecktown 2 blocks, turn S. on Country Club Rd. cross over Rt. 22 to Green Pond Rd. turn R. to farm in Northampton Co., Pa.

CATTLE & MILKING EQUIPMENT

(19) mixed breeds of milch cattle in various stages of production, mostly home raised & high producers, (11) heifers, bulls or steers 10 to 12 mon. of age, (2) Jersey bulls 14 mon. old, individual health papers furnished; Muller 300 gal. milk tank; Surge SP-22 compressor; (2) Surge milker units; dbl. rinse tubs; 50 gal. hw heater.

FARM EQUIPMENT

Farmall 460 diesel w/TA; Farmall 400 diesel w/TA & new rubber; Farmall H tractor; front end loader & culti for same; (2) JD three bot plows 14" & 16"; MD #16 three bot. 16" pl; Int. 10' transport disc; JD 10' roller harrow; JD 290 corn planter; MD 245 corn planter; Ontario 13 disc grain drill on rubber; NH 478 haybine; NH semi mt. 7' grass mower; NH 55 rake; JD 214 baler; (4) four wheel trailers; N Idea 310 one row corn husker; Little Giant 28' bale elev.; JD 32B trailer type weed sprayer; NH 33 flail chopper; Meyers single beater pto manure spreader used 2 yrs; 30" barn fan; 38' ext. ladder; approx. 100 ton cow manure; plus other items too numerous to mention.

Terms - Cash or acceptable check Refreshments available

Ordered by
JOSEPH GROLLER

Conducted by
Ralph W. Zettlemoyer Auction Co. Inc.

PUBLIC SALE

**HOLSTEIN HERD - FARM MACHINERY
SATURDAY, FEBRUARY 19, 1983
10:00 A.M.**

Located in Chester County, PA - 3 miles north of Oxford on Bethel Road. From Route 1 by-pass go north on Route 472, bear left at intersection, follow to sale.

45 Head HOLSTEIN HERD AT 12:30 45 Head Approx. 17 head fresh Dec., Jan., Feb., March, balance in all stages of lactation. Sired and bred to pure bred bulls. Pregnancy checked - 30 day charts.

Auctioneer's Note: This herd is a little on the rough side, an opportunity to buy cows with potential.

FARM MACHINERY

John Deere 3020 gas tractor, power shift, overhauled last fall, good rubber; John Deere 720 gas; Great Bend heavy duty loader fits 3020 and 720; New Holland 479 haybine; New Holland 256 rake with rubber attached teeth; New Holland 271 baler with thrower, completely overhauled in 1982; 5 high side bale wagons; 3 grain bin wagons; John Deere 4 bottom, 14" plow, 3 pt.; John Deere 8 ft. transport disc harrow; John Deere 4 row 495A corn planter; John Deere 34 forage harvester; New Holland No. 3 forage wagon, needs work; 6 ft. Woods rotary mower, pull type; New Idea tandem axle 375 bu. manure spreader; 1956 GMC truck with Grove silage box; 1957 Chevrolet stake body; 29,000 original miles, 2 speed transmission, both run good; wagon load small items.

Farm Machinery sold between 10 a.m. and 12:30 p.m.

Terms by:
CHARLES STOWE

Auctioneer: Steve Petersheim
717-786-4624

Lunch on Premises

Public Sales Register

Closing Date - Monday, 5 00 P M of each week's publication

FRI MARCH 11 - 9 A.M. - Consignment Sale of Farm Equipment by Keister's Middleburg Auction Sales, Inc. Rt. 555 3 miles East of Middleburg, 5 miles west of Selinsgrove, Pa. Don and Walt Keister, Owners, Ray Long and Dave Imes, Auctioneers

SAT. MARCH 12 - Public Sale of Farm Equipment, Located at 61 Clay Rd., Lititz, PA. Clarence W Weaver, Owner. John E and Paul E Martin, Auctioneers.

SAT. MARCH 12 - Public Sale of Farm Equipment. Located near Lees crossroad, 6 mi. east of Shippensburg. Charles Strohn, Owner. Nevin Martin and Melvin Senseng, Auctioneers

SAT. MARCH 12 - Public Sale of Farm Equipment located between Mt. Joy and Mastersonville along Meadow Road (1 mile SW of Mastersonville) near Chiques Church of the Brethren. Sale by Guy Stauffer, Rufus K. Geib and Raymond Miller, Auctioneers.

SAT. MARCH 12 - 8 30 A.M. Public Sale of Household Goods, Farm Machinery, Livestock, An-

tiques and Quilts. 15th Annual Sale for Gordonville Fire Co Local Auctioneers.

SAT. MAR. 12 - 10 A.M. Public Sale of Good Machinery Located in Centre Co ½ mi. north of Potters Mills, PA on Rt. 144, turn east on Lower Georges Valley Rd., 1½ mi to farm. Dick and Lucille Fuller, Owners Mark Gluck, Auctioneers.

SAT. MARCH 12 - 11 A.M. 50 Registered Holstein Calves and Heifers Located at Hunter's Sales Barn, Rising Sun, MD Eastern Shore Showcase Calf Sale For more information contact Robert Knutsen, 301-658-6325.

MON. MARCH 14 - Public Sale of Farm Equipment located along School House Road just east of the Middletown exit of Rt. 283. Sale by J Allen Dehmev estate. Raymond Miller and Rufus Geib, Auctioneers

TUES. MARCH 15 - 12 Noon. Complete Mar-Gra Registered Holstein Dispersal Located 6 mi northeast of New Holland, Rt. 23 east to Rt. 625 north, approx. 2 mi turn

right onto Union Grove Rd., 1 mi. to farm on left. Marvin and Grace Reed, Owners. Kline and Kreider, Auctioneers

TUES. MAR 15 - 9 A.M. Public Sale of Farm Machinery and Some Household Located in Millfin Co., 3 mi northeast of Belleville, PA on Maple Grove Rd. Mr. and Mrs. John W. Spicher, Owners Mark Gluck, Auctioneer

THURS MAR 17 - 11 00 A.M. Monthly Cow Sale at Mel Kolb, Inc., Maryland Farm, Woodsboro, MD

THURS. MARCH 17 - Public Sale of Modern Farm Machinery and Personal Property. Located at the farm, 572 Millway Rd., Lititz, PA, from Lititz go 1 mi north on Rt. 501, turn east on Newport Rd., 2 mi. to Millway Rd., turn left to farm Estate of Jesse Balmer. Kline and Kreider, Auctioneers

FRI. MARCH 18 5 30 P.M. Public Sale of Tractors, Trucks and Etc Located at the Kempton Community Center. 12 Auctioneers

FRI. MARCH 18 - 6 30 P.M. Consignment Sale of Feeder Cattle and Feeder Pigs by Keister's Middleburg Auction Sales, Inc. Rt. 555 3 miles East of Middleburg, 5 miles west of Selinsgrove, Pa. Don and Walt Keister, Owners, Ray Long and Dave Imes, Auctioneers

PUBLIC SALE

**SATURDAY, FEB. 19, 1983
9:30 A.M.**

Location: Brickerville Fire Hall, off Route 322 in Brickerville, Lanc. Co., Pa.

Household Goods; Jessie French & Sons Piano; 5 pc. Bedroom Suite, Spring & Mattress; Single Bed, Spring & Mattress; 3 pc. Bed Room Suite, Box Spring & Mattress; 2 Sofa Beds; Breakfast Set, 6 Chairs; Corner Cupboard; Kneehole Desk; Extension Table, 4 Boards & 6 Chairs; Vanity; Chairs; Rockers; Lounge Chair; Window Air Conditioner; Large & Small Fans; Philco Chest Freezer; G.E. Washer; Kenmore Dryer; Hoover Tank Sweeper & Attachments; Magazine Racks; Ice Chest; Metal Cabinets; 2 Quilt Frames; Serving Table; Hand Sweeper; 32 Rifle; 12 ga. Shot Gun; Shoe Maker Outfit; Table & Floor Lights; Rugs; Books; Yarn; Wash Boiler; Electric Clipper; Toaster; Roasting Pan; Coffee Maker; Trays; Variety of What Nots; Pillows; Set of Ovenware; Variety of Dishes; Variety of Cooking Utensils, Knives & Forks; Porch Furniture & Glider.

Antiques

2 Chest with 4 Drawers & Glass Knobs; Jelly Cupboard with 2 Drawers; Oak Drop Leaf Table; Small Tables, 1 with Claw Feet; Small Drop Leaf Table; Bucket Bench; Spinning Wheel; Chests; Cupboard with Mirror; Library Table; Dough Tray & Stand; Foot Stools; High Chair; Cane Seat Chairs & Rocker; Set of 6 Chairs; 2 Reed Rockers; Benches; Demastes Treadle Sewing Machine; Wooden Fork & others; WOOLEN SPREAD SIGNED PETER LEISEY, LANC. CO., COCALICO TWP.; QUILT; Clothes Trees; Flail; Large Tin Sterling Coffee Can; Baskets; Large Mirror; Wooden Boxes; Wooden Paddles; 3 Clocks, 2 Eight Day; Brass Bucket; Variety of Small Iron Kettles; Sad Irons; Wooden Bowl; Butter Mold; Horse Tie; Wooden Measures; Water Kegs; Wooden Crock Lids; Picture Frames; Coal Bucket; Dryer; Scales; Meat Saw; Ladles; Forks; Crimper; Earthen Pie Plates; Jugs; Crocks; Salt Crock; Candle Mold; Camera; German & English Bible; Milk White Majolica; English Blue Willow; Variety of Vases; Compote; Depression Glass; Shaving Mugs; Luster Pitchers; Coal Oil Lights; Tea Pots; Cake Stand; Ironstone; Adams; variety of Glass; 8 Glasses & Pitcher; Cuspidor; Scoops; 3 Prong Fork & Knives; Cookie Cutters; Skillet; Old Calendars; Pair Buggy Lights; Variety of Tools; Axes; Hammers; Plane; Level; Buck Saw; Jack; Horse Collar; Garden Tools; Shovels; Rakes; Step Ladder; Power Mower; Lawn Sweeper.

Articles can only be viewed day of sale. Many other articles not mentioned.

PUBLIC SALE

**OF OF REAL ESTATE
FRI. EVE., MARCH 4, 1983**

At 7:00 P.M.

Location: Along Route 322 and Wood Corner Road in Clay Twp., Lanc. Co., Pa., between Lincoln & Clay.

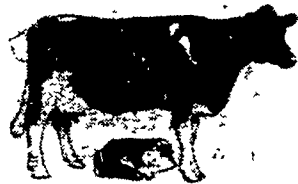
**LARGE LOT ON WHICH IS ERRECTED A
2½ Story Brick Dwelling
with 2 Car Garage Attached**

4 rooms and full bath upstairs; 3 rooms and modern kitchen with built-in stove & refrigerator and ½ bath, open stairway; lot of closet space. Enclosed porch, large attic, full basement, hot water oil heat, cistern well. If you are looking for a well built home, don't miss this sale. To view property Saturday, February 26 from 10:00 A.M. to 4:00 P.M. or by appointment call 733-6618 in the evening. Thank you.

Terms By
RAYMOND EDWARDS

Frank & Paul Snyder, Aucts. - 859-2688 - 733 - 7052
K. L. Shirk, Atty.
Fasnacht, Clerks
No Out of State Checks

Not Responsible for Accidents
Refreshments by Fire Co.



COMPLETE HERD DISPERSAL OF NELSON MUSSER

**FRIDAY FEBRUARY 4, 1983
at 10:30 A.M.**

At Shady Lane Dairy Sales, Inc. ¼ Mile West of Quarryville off Rt. 372 on Oak Bottom Rd.

100 HEAD OF REGISTERED AND HIGH GRADE HOLSTEINS

This herd consists of 35 mature cows, 2 springing heifers, 5 bred heifers, 13 open heifers over 1 year old, 8 four to six month old heifers and 4 started calves.

OFFICIAL DHIA 2X 305 14,677 lbs. 3.7% 541 fat
CURRENTLY AVERAGING 50.0 lbs. Milk In The Tank

This is a clean herd with a future, 9 fresh in Dec., 1 in Jan., 1 due in Feb., 2 in March, 5 in April, 2 in May, Balance in all stages of lactation.

Special mention of 1 Brown Swiss and 1 R & W Holstein.

Also selling 1 load of local springers due in February and March. Purchased this fall from herd dispersals. Plus some fresh and springing cows and heifers from local overstocked herds.

This is an excellent opportunity to buy from a good local herd, in good health and production.

TB and Blood Tested.

Health Charts Sale Day
Preg. Examined by Vet.

SHADY LANE DAIRY SALES, INC.

Owners

Glenn D. Fite
717-786-2750

David L. Fite
717-786-1725

Lancaster Co. Amish: For Free Transportation Call by Thurs. Eve.

SNOW DATE Saturday February 5, 10:30 A.M.