

Livestock market and auction news

Lancaster Co. Weekly

(Continued from Page A2)

BULLS: Yield Grade 1 1200-2000 lbs. 51.75-56.50, few 57.00-60.00, 10 head 60.50-64.25; Yield Grade 2 1000-1450 lbs. 48.00-52.50.

VEAL CALVES: Vealers firm to 5.00 higher, some sales Choice and Prime 5.00-7.00 higher. Very good demand for holstein bulls to return to farm.

VEALERS: Prime special fed 220-325 lbs. 116.00-125.00; Choice 160-300 lbs. 100.00-112.00, few 112.00-116.00; high Good and low Choice 140-260 lbs. 80.00-106.00, 115-140 lbs. 60.00-85.00, 80-115 lbs. 50.00-60.00, few 65-80 lbs. 45.00-52.00.

SLAUGHTER CALVES: Good and Choice 275-450 lbs. 52.00-70.00, few Choice 70.00-80.00.

RETURN TO FARM: 10 head 110-115 lb. holstein heifers 126.00; bulk 95-115 lbs. 90.00-106.00; bulk 90-125 lb. holstein bulls 90.00-111.00, several 111.00-120.00; bulk 85-90 lbs. 80.00-85.00, few small frame 85-100 lbs. 60.00-80.00.

Belknap Auction

Dayton, Pa.

Wednesday, Jan. 19

Report supplied by PDA

CATTLE 68. Compared with last Wednesday's market; one Good slaughter steer at 53.50, one Standard at 48.00. Few Good & Choice slaughter heifers 50.00-53.00, Standard 43.00-48.00. Utility & Commercial slaughter cows 40.00-44.00. Cutters 37.00-40.00, few Canner & Low Cutter 32.00-36.00. Few Medium Frame #1 385-740 lbs. feeder steers 53.50-59.50; few Medium Frame #1 350-755 lbs. feeder heifers 43.25-52.00, few Medium Frame #2 345-695 lbs. 38.25-42.50.

CALVES 48. Few Choice vealers 94.00-96.00, one Good at 86.00, Standard & Good 90-110 lbs. 52.00-60.00, 65-85 lbs. 40.00-52.00. Farm calves, holstein bulls 90-125 lbs. 56.00-65.00, few to 80.00.

HOGS 188. Barrows & gilts .25 to .50 higher. US No. 1-2 220-240 lbs. barrows & gilts 58.00, few 58.50-59.00, No. 1-3 200-260 lbs. 56.50-57.75, one lot No. 1-3 195 lbs. at 53.75. Sows #1 to #2 higher. US No. 1-3 290-690 lbs. sows 47.50-54.50, few

Medium 300-340 lbs. 44.50-46.75. Few Boars 43.50-45.00.

FEEDER PIGS 34. US No. 1-3 35-40 lbs. feeder pigs 33.00-43.00 per head, one lot No. 1-3 70 lbs. 52.50 per head.

SHEEP 2. Slaughter sheep 14.00 and 16.50.

Belleville Livestock

Belleville, Pa.

Wednesday, Jan. 19

Report supplied by PDA

CATTLE 120: Compared with last Wednesday's market, slaughter cows .75-1.25 higher. One Good slaughter steer at 56.00, couple Standard 49.75 and 50.35. Few Standard slaughter heifers 47.50-54.50. Utility & Commercial slaughter cows 38.75-42.50, couple 44.10, Cutters 36.75-39.50, Canner & Low Cutter 34.50-37.00. Few Yield Grade #1 1035-2165 lbs. slaughter bulls 47.10-50.10.

CALVES 135: Few Choice vealers 88.00-92.00, few Good 81.00-89.00, Standard & Good 70-100 lbs. 52.00-62.00, few Utility 50-85 lbs. 40.00-46.00. Farm calves, holstein bulls 90-125 lbs. 70.00-105.00, mostly 90.00-102.00.

HOGS 133: Barrows & gilts .75-1.00 higher. US No. 1-2 220-230 lbs. barrows & gilts 59.50-60.00, No. 1-3 210-240 lbs. 57.35-59.00, No. 1-3 180-190 lbs. 54.75-55.75. US No. 1-3 270-515 lbs. sows 48.25-53.50.

FEEDER PIGS 130: US No. 1-3 20-35 lbs. feeder pigs 34.00-41.00 per head, No. 1-3 35-50 lbs. 40.00-45.00, one lot No. 1-3 60 lbs. 54.00 per head.

SHEEP 12: Few Choice 90-105 lbs. woolled slaughter lambs 48.00-61.00. Few Slaughter ewes 17.50-20.50.

HOLSTEIN DAIRY COWS \$620 to \$1135 PER HEAD, COUPLE \$1385 PER HEAD.

Oklahoma Cattle

Thursday, Jan. 20

Report supplied by USDA

FOR THE WEEK: Feeder Steers steady to 1.00 lower. Feeder Heifers 1.00 lower. Inclement weather including bad road conditions had an effect on livestock demand and movement. Slaughter Cows 2.00-2.50 higher. Utility and Commercial 2-3 few 4 35.50-38.40; low-dressing and Y.G. 3-4 33.30-36.60. Cutter 1-2 35.00-37.90. Canner

and low Cutter 30.75-35.00. Slaughter Bulls 4.00-5.00 higher; however outlets narrow to this advance late. Y.G. 1 few 2 1200-1600 lbs. 47.50-51.25; package 1812 lbs. 52.80; 1525-1545 lbs. high-dressing 53.25-54.60. Salable receipts this week near 14,000 head compared to 23,835 head last week and 23,759 head last year. Feeder Steers and Heifers made up 87% of the weeks total run; Cows and Bulls near 13%.

New Holland Horse

New Holland Sales Stables

Monday, Jan. 17

Report supplied by auction
Reported receipts of 229 head of horses, mules, and ponies.
Market: steady.

Local Better horses 450.00-750.00; Driving horses 350.00-650.00; Riding horses 325.00-650.00; Lightweight killers 325.00-450.00; Heavyweight killers 475.00-565.00; Mare ponies 50.00-75.00; Pony Colts 15.00-30.00; Geldings 50.00-75.00; Larger ponies 125.00-250.00.

Stop By Our Booth When You Visit

CATTLE FEEDERS' DAY

Tuesday, January 25th at the Farm & Home Center, Lancaster

New from young's...

A FEED ADDITIVE FOR FINISHING CATTLE



Bovatec

in your cattle feed gets two jobs done.

Bovatec® is the only feed additive of its kind that improves both feed efficiency and average daily gain. As a result, cattle reach market weight sooner on less feed — and you'll cut costs by about \$15 per head.

If you're looking for a way to reduce the cost of feeding your cattle, now is the time to ask us about Bovatec.



young's

Livestock Nutritional Services

Your young's representative has all the details on the two new premixes containing Bovatec — CATTLE POW'R and CATTLE SAV'R. If you don't know the representative in your area call collect at (814) 224-5111.

© 1982 Young's

Patz

★ Barn Cleaners, Manure Pumps, Manure Stackers, Silo Unloaders, Bunk Feeders, Feed Conveyors

MARVIN J. HORST

DAIRY EQUIPMENT

1950 S. 5th Avenue, Lebanon, Pa. 17042
Phone: 717-272-0871

CONTACT US

For

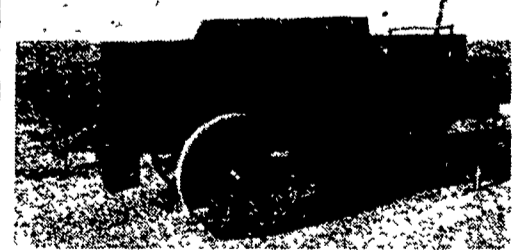
MANURE HANDLING EQUIPMENT

Semi- and Liquid Spreaders - Ground Driven - Easy Running
Priced Reasonably

PIT ELEVATORS

ALLIS CHALMERS AND WISCONSIN POWER UNITS

COMPACT ROTO BEATERS



Equipped with rubber mounted axle shocks

HYD. POWERED BARN YARD SCRAPERS - EXCELLENT FOR GRADING - SNOW REMOVAL

PLATE SHEARING & PRESS BRAKE WORK

SMUCKER

WELDING & MANUFACTURING

2110 Rockvale Road
Lanc., PA 17602
PH: (717) 687-9198