

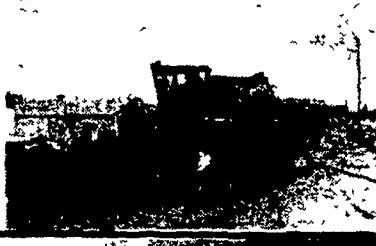
**JOHN DEERE DESIGN, DEPENDABILITY AND DEALERS MAKE THE DIFFERENCE**

**JOHN DEERE USED TRACTORS**

1010 RU Dsl.	3010 SYR. Dsl.
4620 P. Shift Cab	3010 SYR. - Gas w/Side
4010 Dsl. W.F.E.	Mtd. Mower
4020 Dsl. W.F.E.	630 Gas R.C.
4030 SYR. 4 Post R.G.	70 Gas R.C.

**OTHER FARM TRACTORS**

2 - 135 White-Cab, Low Hrs. Oliver 550 Gas w/Sauder Loader  
 M Farmall  
 460 IHC Gas  
 MF 65 Dsl.  
 AC 7045 w/Cab, Low Hrs.  
 2000 Ford, Dsl., PS (Blade), Excellent



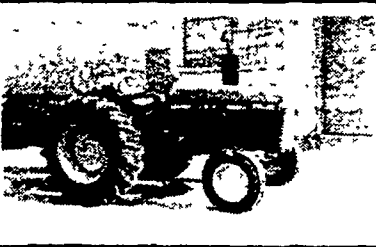
**JOHN DEERE 7700 COMBINE**

DSL. w/Cab, w/14 Ft. Platform  
 Priced At **\$19,900**  
 444 Corn Head  
 Priced At **\$3,950**  
 JDFF Financing Available  
 Waiver To Sept. 1-83 For Corn



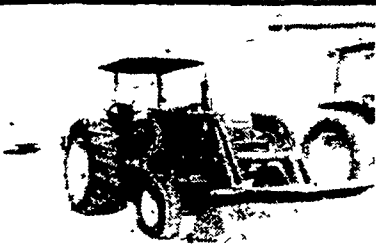
**JOHN DEERE 2940 TRACTOR**

w/MFWD - 300 Hours  
 Dual Hydraulic Outlets  
 Priced At **\$19,900**  
 JDFF Financing Available  
 Waiver To June 1-83



**JOHN DEERE 2240 TRACTOR**

w/Hi/Lo Trans.  
 Low Hours  
 Priced At **\$12,500**  
 JDFF Financing Available  
 Waiver To June 1-83



**JOHN DEERE 2640 HU DIESEL TRACTOR**

w/Roll Guard & Canopy  
 w/JD 146 Loader w/84" Bu.  
 Priced At **\$16,500**  
 JDFF Financing Available  
 Waiver To June 1-83

**SALE -- RECONDITIONED USED EQUIPMENT PRICES REDUCED**

**PTO MANURE SPREADERS**

Tag 318	NI 224 w/Endgt & Top Btr.	Reduced '500 to '3295
Tag 327	NI 218 w/Endgt	Reduced '595 to '3000
Tag 300	NI 213 Sngl Btr w/Endgt	Reduced '200 to '1595
Tag 313	NI 213 Sngl Btr	Reduced '50 to '750
Tag 294	NH 214 Flail Type	Reduced '400 to '1595
Tag 296	NH 365 Flail Type Spreader	Reduced '400 to '995
Tag 287	JD 40 w/Endgt	Reduced '100 to '1450

**GROUND DRIVEN SPREADERS**

Tag 328	NI 206 (hubs only)	Reduced '100 to '1100
Tag 299	NI 206 steel whls	Reduced '525 to '1250
Tag 283	NI 206 (hubs only) w/dgate	Reduced '400 to '1095
Tag 214	NI 206 stl whl AS-IS	Reduced '50 to '350
Tag 305	NI 10A stl whl AS-IS	Reduced '120 to '175

**CORN PLANTERS - Subject to interest waiver To April 1, 1983, JDFF**

Tag 169	JD 7000 6R Cons. dry fert., insect. pop. monitor	Reduced '500 to '8495
Tag 151	JD 1440 Zero Till 4R 80 plateless, dry fert. insect.	Reduced '145 to '2850
Tag 149	JD 1250 6R plateless w/dry fert., insect., insect. pop monitor	Reduced '500 to '2450
Tag 143	JD 1240 4R 38" plateless w/ fert., insect. monitor	Reduced '400 to '2050
Tag 146	JD 1240 4R plateless w/ fert., insect.	Reduced '300 to '1650
Tag 171	JD 1240 4R Plateless liquid fert.	Reduced '1000 to '500
Tag 153	AC 500 4RW, dry fert., insect.	Reduced '700 to '750
Tag 164	AC 500 4R, fert., AS-IS	Reduced '345 to '250

**CHECK THESE SPECIALS — CALL RIGHT AFTER 7 A.M. FOR INFORMATION & PRICE NEW EQUIPMENT SPECIALS**

JD 2440 RU 28" whls-Hi/Lo  
 JD 4240 quad w/sound body  
 "40" Series close out specials. New Customer cash rebates and finance waiver until June 1, 1983 or cash in lieu of waiver.  
 JD 327 Baler w/#30 ejector  
 JD 337 Baler w/#30 ejector, JD waiver to May 1, 1983

JD 7000 4&6 row planters  
 JD money bonus & waiver to April 1, 1983  
 JD 125 Dsl. skid steer loader  
 JD 90 skid steer loader  
 JD 6500 forage blower  
 JD 465 flail spreader  
 NI 325 2RN picker  
 NI 272 7' cut/ditcher

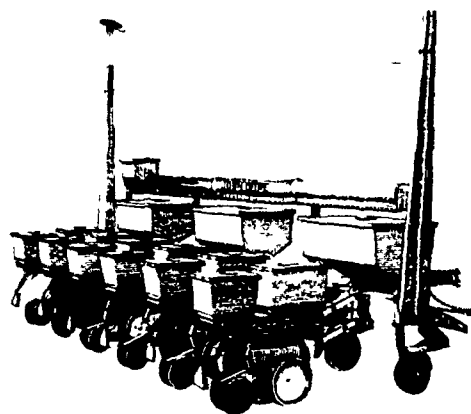
**NI 206 SPREADERS SPECIAL TERMS NOW BEING OFFERED WITH DOWN PAYMENT BALANCE CAN BE EXTENDED TO MAY 1, 1983**

**NEW IDEA 95 BU. GROUND DRIVEN SPREADERS**

**OVERSTOCKED! MUST REDUCE INVENTORY! PRICES AT COST!**

206 New Idea Spreader Available With or Without Steel Wheels With or Without Endgate Att.

**SPECIAL PLANTER DISCOUNTS**



**NEW PLANTERS - LOW PRICES ON HAND FOR IMMEDIATE DELIVERY**

JD 7000 6R narrow, drawn max-emerge planters, with dry fert. attach., insect. attach., regular down pressure springs and regular monitor.

SPECIAL "CASH" PRICE **\$8700**  
 LESS JOHN DEERE BONUS **\$800**  
**\$7900**

OPTION: Dry fert. auger fill attach. \$650.  
 PLUS: Interest Waiver to April 1, 1983, on approved JDFF financing

**WINTER REPAIR SPECIAL**

**FREE ENGINE OIL CHANGE WITH TRACTOR REPAIR WORK \$100 MINIMUM**



**10% OFF**

**On all John Deere Service Work On Farm Tractors and Farm Machinery - No Minimum-Thru March 1, 1983**

DISCOUNT APPLIES TO ALL SERVICE WORK DONE IN OUR SHOP INCLUDING HAULING, LABOR, AND JOHN DEERE PARTS USED PERFORMING THE JOB.  
 \* FIELD SERVICE EXCLUDED

Make all your farm machinery repairs now to avoid wasting valuable time and money in the busy Spring. Our mechanics are experts...call soon! - (717) 291-1046.

By Appointment Only  
 Sorry we cannot offer discounts on credit sales

**LANDIS BROS., INC.**

1305 Manheim Pike, Lancaster, PA 17601

Phone -717-291-1046

