

FARM EQUIPMENT

FARM EQUIPMENT

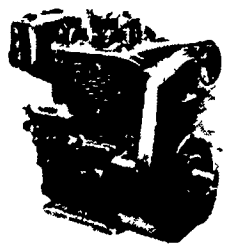
FARM EQUIPMENT

FARM EQUIPMENT

FARM EQUIPMENT

FARM EQUIPMENT

FARM EQUIPMENT



Let Us Know
Your Service Problems
HOOVER
DIESEL SERVICE
PH 717 656 6133
2998 West Newport Rd
Ronks PA 17572

USED EQUIPMENT

AC D15 Tractor
Used D15 diesel tractor
NI 708 power unit and 702 power unit
737 husking bed
717 combine
713 combine
AC 7045 tractor w/cab
AC 680 tractor
AC 460 loader
AC 5050 4WD tractor w/loader
890 NH forage harvester
3 rw head
2 rw head
pick-up head
731 corn head
NH forage harvesters:
(2) 770 w/heads
(1) 717 and (1) 718
NH Super 68 baler
315 NH baler
479 NH haybine
2 bale wagons

Special Sale
Low Acreage Machine
AC Model L
Gleaner combine w/4 row corn head and 15' grain platform

Oliver semi-mounted
4 bottom plow

Used corn pickers:
NI 324 2 row corn picker
NI 324 picker sheller, 2 row

NEW EQUIPMENT

802 Uni power unit
767 Uni chopper
766 pickup head
768 corn head
1 7020 Hesston forage harvester
1 7140 Hesston forage harvester
2 7316 Hesston forage boxes
1 Hesston round balers
2 323 NI corn pickers
NI 213, 214, 244 and 245 manure spreaders
AC Tractors:
6060 4 wheel drive
6140 4 wheel drive
8010
(1) 5050

AIRVILLE EQUIPMENT, INC.
P.O. BOX 37
Airville, PA
717-862-3967

Sweigard Brothers

RD #3
Halifax, PA 17032
717-896-3414



FORD TRACTORS
New TW 20 w/cab, 4wd, air
New 7700 w/cab, air
New 6600
1300 w/front wheel drive
NEW HOLLAND
New TR70 Combine w/cab, air, heater, w/cat. engine and lots of extras
13' flotation header and cutter bar, w/hume reel



962 N4 corn head
Used 13' NH grain head w/hume reel
New NH harvesters - 707, 718, 782
New NH 892 w/metal detector
New L35 gas, L55 diesel, L775 diesel skid loaders
Used 469 NH haybine
Used 479 NH haybine



NEW IDEA
New 456 large round baler \$7500
New 299 9'3" mow conditioner \$4000
NI 404 and 406 rakes
NI 323 one row corn pickers

Used IH 550 harvester w/pickup head and 2 row corn head



SNOW BLOWERS



- * High Volume
- * Efficient
- * Dependable
- * Proven
- * Rugged
- * Aggressive
- * Discount Prices

MOVE MORE SNOW WITH LESS HP!!

7½ Ft. Wide 8½ Ft. Wide And Big 10 Ft. Wide

USED BELTING MATERIAL RUBBER MATS FOR

**Comfort Stalls Free Stalls Horse Stalls
Horse and Cattle Trailers
Hog Houses**

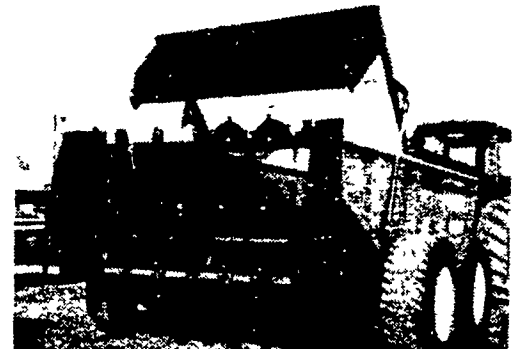
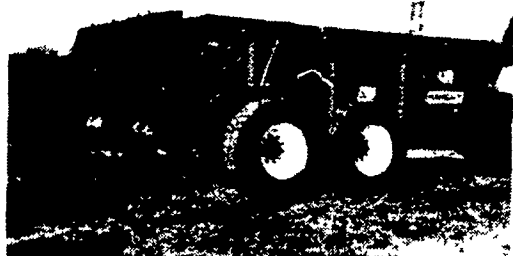
Paul N. Brubaker

215-286-5298

LOOK AT THIS! We Have Just Received The Heaviest 500 Bushel Manure Spreader Ever Built

NEW KNIGHT FEATURES YOU WILL LIKE

1. Double Gratz Web Chain
2. Lower Beater To Break Up Chunks
3. Hydraulic Cylinders On Each Side Of End Gate
4. Tandem Axles With 16.5x22 Tires
5. Special Copper Bearing Steel Alloy To Inhibit Corrosion
6. Heavy Duty Frame Extending All The Way To Rear Axle
7. Worm Driven Web
8. Heavy Duty Beaters With Some Of The Heaviest Bearings You Have Ever Seen On A Manure Spreader



SAVE on HEAVY DUTY MANURE SPREADERS



Look At This...UNLOAD YOUR LIQUIDS FASTER, JUST RAISE THE DUMP "410 and 350 SOUPeR SOLID"

Manure Spreaders In Stock

The Growing Number 1! No Ratchets or Belts to Trouble You

- Wide spreader beaters are made of heavy auger type with ripper prongs which eliminates chunks of unpulverized manure piles laying around in the field.



The combination of the hydraulic tilt, hydraulic rear gate, and lower spinner beater allows for a controlled spread and fast unloading.

TRADE-UP TIME IS NOW...Call & Make A Deal

THESE MODELS IN STOCK

Model 500 - Regular	350 - Regular
Model 410 - SOUPeR SOLID	252 - Regular
Model 350 - SOUPeR SOLID	180 - Regular

COMPARE...If You Can Find A Better Spreader Than KNIGHT.. Buy It!

FINANCING AVAILABLE AT 15% FIXED RATE TRADE-IN FOR QUALITY YOU'LL NEVER REGRET

BINKLEY & HURST BROS., INC.

133 Rothsville Station Rd., Lititz, PA 17543 Ph: (717) 626-4705
Business Hours: Mon. - Fri. 7 AM to 5 PM; Sat: 7 AM til 11:30 AM