

**JOHN DEERE DESIGN, DEPENDABILITY AND DEALERS MAKE THE DIFFERENCE**

**JOHN DEERE USED TRACTORS**

- 1010 RU Dsl.
- 4620 P. Shift Cab
- 4010 Dsl. W.F.E.
- 4020 Dsl. W.F.E.
- 4030 SYR. 4 Post R.G.
- 3010 SYR. Dsl.
- 3010 SYR. - Gas w/Side Mtd. Mower
- 630 Gas R.C.
- 70 Gas R.C.

**OTHER FARM TRACTORS**

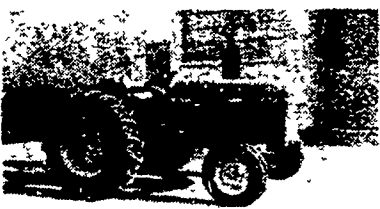
- 2 - 135 White-Cab, Low Hrs.
- Oliver 550 Gas w/Sauder Loader
- 460 IHC Gas
- MF 65 Dsl.
- AC 7045 w/Cab, Low Hrs.



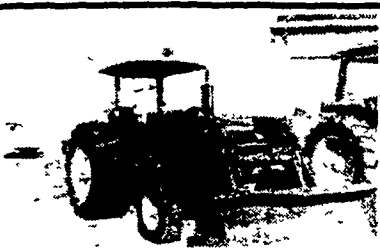
**JOHN DEERE 7700 COMBINE**  
 DSL. w/Cab, w/14 Ft. Platform  
 Priced At **\$19,900**  
 444 Corn Head  
 Priced At **\$3,950**  
 JDFF Financing Available  
 Waiver To Sept. 1-83 For Corn



**JOHN DEERE 2940 TRACTOR**  
 w/MFWD - 300 Hours  
 Dual Hydraulic Outlets  
 Priced At **\$19,900**  
 JDFF Financing Available  
 Waiver To June 1-83



**JOHN DEERE 2240 TRACTOR**  
 w/Hi/Lo Trans.  
 Low Hours  
 Priced At **\$12,500**  
 JDFF Financing Available  
 Waiver To June 1-83



**JOHN DEERE 2640 HU DIESEL TRACTOR**  
 w/Roll Guard & Canopy  
 w/JD 146 Loader w/84" Bu.  
 Priced At **\$16,500**  
 JDFF Financing Available  
 Waiver To June 1-83

**SALE - RECONDITIONED USED EQUIPMENT PRICES REDUCED**

- PTO MANURE SPREADERS**
- Tag 318 NI 224 w/Endgt & Top Btr. . . . . Reduced '500 to '3295
  - Tag 327 NI 218 w/Endgt . . . . . Reduced '595 to '3000
  - Tag 300 NI 213 Sngl Btr w/Endgt . . . . . Reduced '200 to '1595
  - Tag 313 NI 213 Sngl Btr. . . . . Reduced '50 to '750
  - Tag 294 NH 214 Flail Type . . . . . Reduced '400 to '1595
  - Tag 296 NH 365 Flail Type Spreader . . . . . Reduced '400 to '995
  - Tag 287 JD 40 w/Endgt. . . . . Reduced '100 to '1450

**GROUND DRIVEN SPREADERS**

- Tag 328 NI 206 (hubs only) . . . . . Reduced '100 to '1100
- Tag 299 NI 206 steel whls. . . . . Reduced '525 to '1250
- Tag 283 NI 206 (hubs only) w/dgate . . . . . Reduced '400 to '1095
- Tag 214 NI 206 stl whl AS-IS. . . . . Reduced '50 to '350
- Tag 305 NI 10A stl whl AS-IS. . . . . Reduced '120 to '175

**CORN PLANTERS - Subject to interest waiver**

- To April 1, 1983, JDFF
- Tag 169 JD 7000 6R Cons, dry fert., insect. pop. monitor . . . . . Reduced '500 to '8495
  - Tag 151 JD 1440 Zero Till 4R 80 plateless, dry fert. insect. . . . . Reduced '145 to '2850
  - Tag 149 JD 1250 6R plateless w/dry fert., insect., insect. pop monitor . . . . . Reduced '500 to '2450
  - Tag 143 JD 1240 4R 38" plateless w/fert., insect. monitor . . . . . Reduced '400 to '2050
  - Tag 146 JD 1240 4R plateless w/fert., insect. . . . . Reduced '300 to '1650
  - Tag 171 JD 1240 4R Plateless liquid fert. . . . . Reduced '1000 to '500
  - Tag 153 AC 500 4RW, dry fert., insect. . . . . Reduced '700 to '750
  - Tag 164 AC 500 4R, fert., AS-IS . . . . . Reduced '345 to '250

**CHECK THESE SPECIALS — CALL RIGHT AFTER 7 A.M. FOR INFORMATION & PRICE NEW EQUIPMENT SPECIALS**

JD 2440 RU 28" whls. Hi/Lo  
 JD 4240 quad w/sound body  
 "40" Series close out specials. New Customer cash rebates and finance waiver until June 1, 1983 or cash in lieu of waiver.  
 JD 327 Baler w/#30 ejector  
 JD 337 Baler w/#30 ejector, JD waiver to May 1, 1983

JD 7000 4&6 row planters  
 JD money bonus & waiver to April 1, 1983  
 JD 125 Dsl. skid steer loader  
 JD 90 skid steer loader  
 JD 6500 forage blower  
 JD 465 flail spreader  
 NI 325 2RN picker  
 NI 272 7' cut/ditioner

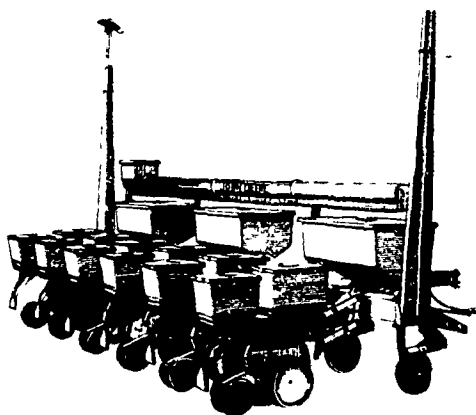
**NI 206 SPREADERS SPECIAL TERMS NOW BEING OFFERED WITH DOWN PAYMENT BALANCE CAN BE EXTENDED TO MARCH 1, 1983**

**NEW IDEA 95 BU. GROUND DRIVEN SPREADERS**

**OVERSTOCKED! MUST REDUCE INVENTORY! PRICES AT COST!**

206 New Idea Spreader Available With or Without Steel Wheels With or Without Endgate Att.

**SPECIAL PLANTER DISCOUNTS**



**NEW PLANTERS - LOW PRICES ON HAND FOR IMMEDIATE DELIVERY**

JD 7000 6R narrow, drawn max-emerge planters, with dry fert. attach., insect. attach., regular down pressure springs and regular monitor.

**SPECIAL "CASH" PRICE \$8700 LESS JOHN DEERE BONUS \$800**

OPTION: Dry fert. auger fill attach. \$650.  
 PLUS: Interest Waiver to April 1, 1983, on approved JDFF financing

**WINTER REPAIR SPECIAL**

**FREE ENGINE OIL CHANGE WITH TRACTOR REPAIR WORK**



**10% OFF**

**On all John Deere Service Work On Farm Tractors and Farm Machinery - No Minimum-Thru March 1, 1983**

DISCOUNT APPLIES TO ALL SERVICE WORK DONE IN OUR SHOP INCLUDING HAULING, LABOR, AND JOHN DEERE PARTS USED PERFORMING THE JOB.  
 ☆ FIELD SERVICE EXCLUDED ☆

Make all your farm machinery repairs now to avoid wasting valuable time and money in the busy Spring. Our mechanics are experts...call soon! - (717) 291-1046.  
 By Appointment Only  
 Sorry we cannot offer discounts on credit sales

**LANDIS BROS., INC.**

1305 Manheim Pike, Lancaster, PA 17601

Phone -717-291-1046

