

Lancaster Co. siblings, Southdowns make champion wins look easy

FARM SHOW — Twelve-year-old Barbara Rohrer and brother 16-year-old Gerald Rohrer of Quarryville, Lancaster County, proved Sunday that showing Southdown sheep to grand champion honors is more than just "child's play" — it's hard work.

Keeping hold of a jumping, wooly sheep taxes muscles and concentration; but all the while they're in the show ring, the Rohrers make their show ring efforts seem easy, working smoothly and in unison with their sheep.

After a grueling five minutes or so of squatting next to their class entries on the damp, dark tanbark, the Rohrers' crisp, clean show garb suddenly becomes a washing task for mother Ann who accompanies her youngster sheep showmen to local and national shows.

With their winnings from Sunday's open breeding sheep competition, the Rohrer children will be able to "pay their cleaning bills," having captured three of the four championship purses in the Southdown show.

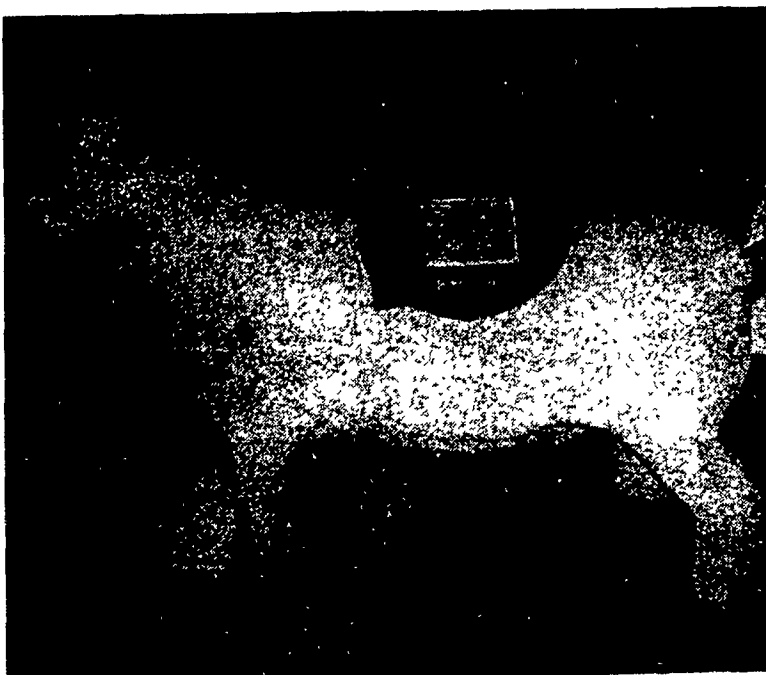
It was the first show experience for Gerald and Barbara's champion ram, the first place spring lamb. After leaving the show ring, Barbara explained that the ram has "championships" in his blood, having been sired by a Howard ram that was a national champion's offspring. The ram's dam, a Wedel ewe, also has championships of her own to boast, including several at Farm Shows in the past.

Barbara also exhibited the grand champion ewe of this year's Farm Show Southdown competition. Another homebred entry of the Howard-Wedel combination, Ann Rohrer recalled how the lamb almost died after it reacted adversely to a tetanus vaccine. "I held her for a half hour, and then all of a sudden she snapped out of it," said a grateful and proud Ann.

Brother Gerald was at the head of the reserve grand champion ram, and together the Lancaster County youths showed the blue-ribbon pen of lambs and flock of the Southdown show.

H. James Shearer of Mountville, Lancaster County, showed the reserve grand champion Southdown ewe, a spring lamb. Shearer proudly explained that his homebred champion Southdown was special — having an "all-American" Southdown sire and an "all-New Zealand" dam.

Shearer, who lives on a small, 15-acre farm in western Lancaster County, is a long-time sheep breeder, having had as many as



Lancaster Countians Barbara and Gerald Rohrer showed their Southdown sheep ram entries to grand and reserve grand honors respectively during Sunday's Open Breeding Sheep Show. The two youths who from Quarryville also exhibited the grand champion Southdown ewe. Barbara poses with champion ram.



Gerald Rohrer with sister Barbara led another of the Lancaster siblings' Southdowns to reserve grand champion ram honors.

six breeds of sheep at one time during the 1950s. But today, due to urbanization pressures from nearby developments, Shearer said he has cut his flock back to seven Southdown ewes and their six ewe lambs.

Although he formerly raised Hampshires, Suffolks, Oxfords, Lincolns, Cheviots and Shropshires, along with roughly 30 head

of Southdowns, Shearer explained he stayed with the "teddy bear" breed of sheep for several reasons: ease of handling; ease of fencing; feed efficiency; and dressing percentage which he termed "the best."

Today, said Shearer, he has more Border Collies on his farm than sheep.



Barbara Rohrer poses with her grand champion Southdown ewe while brother Gerald holds plaque at Farm Show.



The reserve grand champion Southdown ram was shown by Lancaster Countian H. James Shearer, Mountville. The long-time sheep breeder says he now owns more Border Collies than sheep, having cut his flock down to seven Southdown ewes and six ewe lambs.

Show results follow:

- Ram, 1 to 2 Yrs.**
1, 2 Gerald and Barbara Rohrer, Quarryville, 3 Darlene McConaughy, Smicksburg
- Ram, Under 1 Yr.**
1, 2 Gerald and Barbara Rohrer, grand and reserve grand champion, 3 Darlene McConaughy
- 2 Ram Lambs**
1 Gerald and Barbara Rohrer, 2 Darlene McConaughy, 3 David L. Harpster, Boalsburg
- Ewe, 1 to 2 Yrs.**
1, 2 Gerald and Barbara Rohrer, 3 Darlene McConaughy

- Ewe, Under 1 Yr.**
1 Gerald and Barbara Rohrer, grand champion, 2 Mr. and Mrs. H. James Shearer, Mountville, res. grand champion, 3 Jeff Calvert, Berlin.
- 2 Ewe Lambs**
1 Darlene McConaughy, 2 Gerald and Barbara Rohrer, 3 David L. Harpster.
- Breeders Young Flock**
1 Gerald and Barbara Rohrer, 2 Darlene McConaughy, 3 David L. Harpster
- Get of Sire**
1 David L. Harpster, 2 Darlene McConaughy, 3 David Harpster
- Flock**
1 Gerald and Barbara Rohrer, 2 Darlene McConaughy, 3 David Harpster

Menhennett's Shropshires notch champion titles



This Shropshire lamb got the winning nod and earned the Grand Champion Ram title for owners Shober-Clavert Farms, Berlin, Somerset County. Tom Calvert of Berlin joins his winning animal.

FARM SHOW — Farm Show championships have eluded Annette Menhennett for the last seven years. But on the small arena tanbark, Sunday evening, the streak was broken for the Shropshire breeder.

When the dust settled, Menhennett's show string walked off with two champion titles.

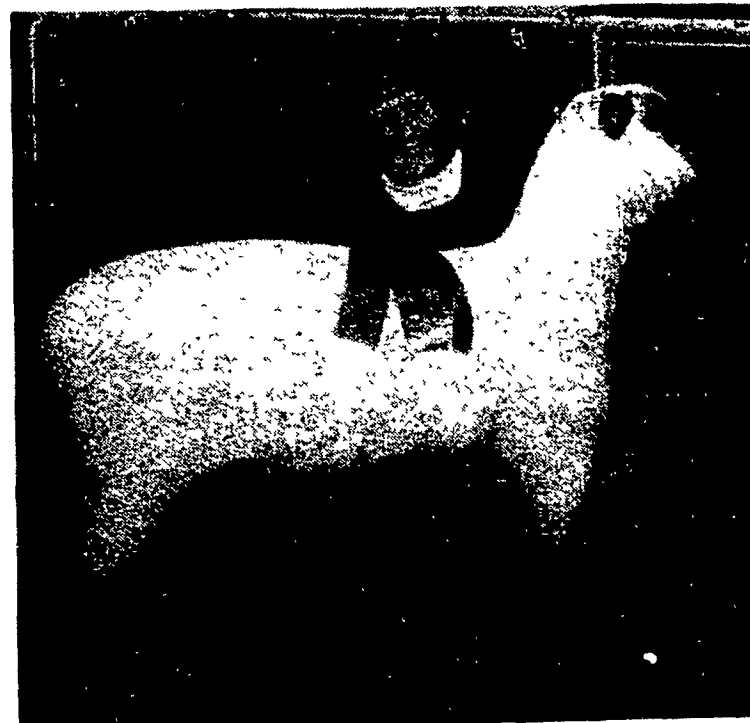
Judge Leroy Boyd, Extension specialist at Mississippi State, went with Menhennett's two-year-old ewe for Grand Champion.

The Chester County exhibitor collected a second rosette when her lamb ram notched the Reserve Grand Champion spot.

Menhennett's registered Shropshire home flock includes 75 breeding ewes and 30 replacement ewes.

Both champions will return to the tanbark for the National Shropshire Show held during the Keystone International Livestock Exposition. Menhennett explained the 1983 National Show will debut experimental classes and judging techniques. A "Shear 'em and

(Turn to Page D4)



Lancaster County Shropshire breeder Sarah Fleener collects the Reserve Champion Ewe rosette with this ewe lamb entry.