

Fertilizer Sale

Prices FOB East Liverpool, Ohio (PA-Ohio State Line)
Prices hold until January 15, 1983

Analysis	Bulk Price
12-12-12.....	\$129.00
15-15-15.....	\$148.00
16-16-16.....	\$154.00
19-19-19.....	\$174.00
5-20-20.....	\$142.00
6-24-24.....	\$160.00
12-24-24.....	\$173.00
9-23-30.....	\$174.00
10-20-20.....	\$153.00
8-32-16.....	\$173.00
0-14-42.....	\$150.00
0-26-26.....	\$160.00
46-0-0 Urea	\$160.00 off barge
18-46-0 DAP.....	\$185.00 off barge
11-53-0 MAP	Call off barge
0-0-62 Potash Calcium.....	\$113.00 off barge

Custom Mixing

Bagging - \$15 on blended fertilizer
\$20 on straight goods

Also - Ammoniated & Pelletted Fertilizer
Rail Service — Trucking

**\$3.00 Discount to Purchasers
of more than 25 tons**

Jerry A. Hoover

110 Seneca Trail Apt. H Hartville, OH 44632
216-877-1031 evenings

Tobacco exhibit brings 'yesteryear' to Farm Show

BY SALLY BAIR
Staff Correspondent

LANDIS VALLEY — In Lancaster County, tobacco is king of the cash crops and this year the Pennsylvania Farm Museum of Landis Valley will be taking an educational exhibit to the Farm Show telling the history of this lucrative crop.

Each year the Farm Museum staff prepares an exhibit based on themes in rural life. Nadine Steinmetz, a curator for the Museum, says she chose tobacco for this year's display because of easy access to material and early tools used in its production.

She says, "Tobacco became a cash crop here in the mid-nineteenth century when the wheat belt moved west. The fact that tobacco became a cash crop just sort of happened. The soil is very rich for it and it is the best climate. Tobacco took over."

"Technological advances lagged far behind other crops where time and labor-saving implements were introduced. "People did try to patent new machinery, but a lot of it was not effective," Steinmetz says. Tobacco remains one of the most labor intensive crops today.

"Tobacco began as a family activity. It does require the most manual labor, with each plant handled individually several times," Steinmetz points out.

Tobacco needs only a 60-75 day growing period from transplanting to harvest, but because of the work of preparing seedbeds, and the final work of stripping and baling the finished product, it is

sometimes referred to as a 13-month crop. German sectarians raised a lot

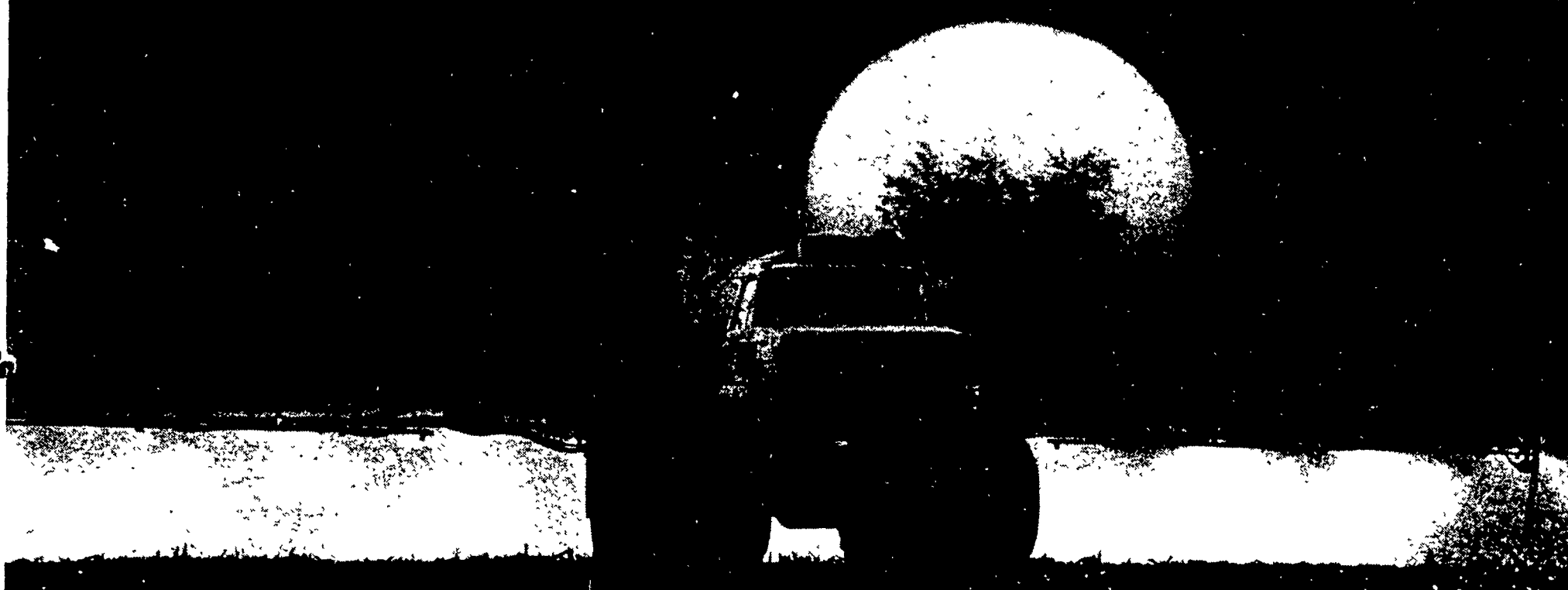
of tobacco, and it is still a lucrative crop for the Amish. "They have the (Turn to Page A17)



A table was used in the making of cigars, and this one is well worn from long hours of work. Nadine Steinmetz, curator for the Museum, has assembled many of the tools used in tobacco harvest and the manufacture of cigars. Cigar making was carried out in many homes and factories in the county.

Begin with Bladex...

For superior weed control in reduced/no-till.



Bladex® herbicide for corn has proven its excellent broad spectrum performance in reduced/no-till acres. Used alone or tank mixed with atrazine or other herbicides, Bladex stops both grasses and broadleaves.

Bladex controls foxtails and fall panicum after they've germinated and emerged. It provides effective burndown activity on emerged weeds, especially when applied with liquid fertilizer or contact herbicides. Residual control lasts up to 12 weeks.

This year, begin with Bladex for broad spectrum weed control performance in reduced/no-till acreage. Follow label directions.

Shell Chemical Co.,
P.O. Box 3871,
Houston, TX 77001.

