

Poultry Markets

Nest Run Eggs

Prices are from Egg Clearinghouse, Inc., (ECI) Durham, N.H. and reflect trading prices for gradable nest run eggs (GNR) on ECI, a nationwide trading center for producers, packers and marketers. GNR eggs are classified by weight in 30-dozen cases, and traded in lots of either 300 or 750 cases. Prices are FOB buyers dock, and are computed Tuesday and Thursday of each week. This week's prices for each classification were:

Classification	Net Weight Per Case	Dec. 14		Dec. 16	
		Tuesday	Thursday	Tuesday	Thursday
Class 1 - Large	48 lbs.	55	57	57	57
Class 2 - Large	45 lbs.	48	50	50	50
Class 3 - Medium	42 lbs.	39	41½	41½	41½
Class 4 - Small	39 lbs.	31	31	31	31
Breaking Stock	48 lbs.	38	39	39	39
Checks	48 lbs.	33½	34	34	34

Weekly New York Egg Market

	From Friday, Dec. 10 to Dec. 16				
	Fri.	Mon.	Tues.	Wed.	Thurs.
WHITE					
Jumbo	72	73	74	75	76
Ex Large	67	69	70	72	73
Large	64	66	67	69	70
Mediums	54	54	55	57	59
Pullets	44	44	44	45	45
BROWN					
Jumbo	-	-	-	-	-
Ex Large	84	84	84	84	86
Large	79	79	79	79	81
Mediums	61	61	61	61	61
Pullets					
Peewees	Unquoted				
Off Grade					
Large	53	55	56	58	59
Checks	27	28	28	28	28

N. E. Weekly Shell Egg Report

Tuesday, Nov. 2
Report supplied by USDA
Prices paid per dozen Grade "A" Brown eggs in cartons delivered to retail stores:

	Ex. Large	Large	Medium	Small
MASS.X	85-88	82-85	70-75	46-52
Mostly	86	83	72-73	48-50
N. HAMP.	80-86	77-83	65-71	42-47
Mostly	82-85	79-82	67-70	43-46
R.I.	76-84	73-81	63-69	40-46
Mostly	76-86	73-77	63-65	40-42
VERMONT	86-94	80-91	70-80	-
Mostly	87-90	84-85	72-75	-
MAINE	84-88	81-85	71-73	48-49

X Includes Central and Western Sections only.

Heinsey's Poultry Market

Root's, East Petersburg
Tuesday, Dec. 14
Report supplied by auction
MUSCOVY DUCKS, DRAKES: range .80-.92 per lb.
MUSCOVY DUCKS, HENS: range .70-.82 per lb.
PEKIN DUCKS: range .40-.52 per lb.
PULLETS: 6-8 lbs. range .47-.56 per lb.
RED FOWL: 4-5 lbs. range .08-.16 per lb.
RED FOWL: 5-6 lbs. range .15-.28 per lb.
CROSSBRED FOWL: 5-9 lbs. range .20-.32 per lb.
CROSSBRED ROOSTERS: 4-6 lbs. range .40-.70 per lb.
CROSSBRED ROOSTERS: 7-11 lbs. range .20-.56 per lb.
GUINEA FOWL: range .95-1.14 per lb.
BANTY ROOSTERS: range 1.00-2.50 ea.
BANTY HENS: range .25-1.25 ea.
LEGHORN ROOSTERS: range .20-.34 per lb.
LEGHORN HENS: range .06-.10 lb.
CAPON: 9-14 lb. range .62-.82 per lb.
GEESE: 7-18 lbs. range .30-.82 per lb.
TURKEYS: 15-19 lbs. range .46-.54 per lb.
PIGEONS: range 1.00-1.55 ea.
WHITE PIGEONS: range 1.25-2.25 ea.
RABBITS: 4-6 lbs. range .80-1.26 per lb.
RABBITS: 7-10 lbs. range .60-.92 per lb.
GUINEA PIGS: range .25-.75 ea.
GOATS: range 20.00-37.50 ea.
KID GOATS: range 16.00-28.00 ea.
TOTAL AMOUNT COOPS: 987.

Philadelphia Eggs

Friday, Dec. 16
Report supplied by USDA
Prices to retailers: Sales to volume buyers, consumer grades white eggs in cartons delivered store door:
A Extra Large 63-67; A Large 61-64; A Medium 50-52.

Belleville Livestock

Belleville, PA
Wed., December 15, 1982
Report supplied by PDA
CATTLE 98: Compared with last Wednesday's market, slaughter cows steady to 75 cents lower. One Standard slaughter steer at 48.60. Few Standard slaughter heifer 42.75-45.50. Utility & Commercial slaughter cows 35.00-39.00, Cutters 33.00-35.00, Canner & Low Cutter 30.25-33.00, Shells down to 15.50. One Yield Grade #1 1220 lbs. slaughter bull at 50.60. One small lot Large Frame #1 350 lbs. feeder heifers at 49.50.
CALVES 171: Few Good & Choice vealers 71.00-75.00, Standard & Good 70-100 lbs. 40.00-48.00, Utility 50-80 lbs. 30.00-40.00. Farm calves, holstein bulls 85-130 lbs. 50.00-79.00, mostly 55.00-75.00.
HOGS 131: Barrows & gilts \$1.75 to \$3 higher. US No. 1-2 220-250 lbs. barrows & gilts 58.00-58.85, No. 1-3 215-270 lbs. 55.00-58.00, one lot No. 2-3 350 lbs. at 51.50. US No. 1-3 290-525 lbs. sows 45.00-50.00. Few Boars 28.25-43.25.
FEEDER PIGS 290: US No. 1-3 15-20 lbs. feeder pigs 30.00-39.50 per head, No. 1-3 20-35 lbs. 39.00-48.00, No. 1-3 35-55 lbs. 46.00-60.50 per head.
SHEEP 15: Few Good & Choice 65-115 lbs. woolled slaughter lambs 41.00-49.00. HOLSTEIN DAIRY COWS \$680-\$1200, one at \$1440 per head.

Delmarva Poultry

Thursday, Dec. 16
Report supplied by USDA
Today's L.T.L. asking prices are lower on U.S. Grade A at 43-47 cents with most new trading at or under the low side of this range.
Estimated slaughter of broiler fryers in Delmarva (000).
Estimated 12/16 1,581; Actual 12/9 1,940; Actual 12/14 1,819; Average Weights 12/14 4.28; 12/7 4.42.

New York Multiple Drop Broiler Report

Thursday, Dec. 16
Report supplied by USDA
Current broiler/fryer negotiated prices for immediate delivery includes mostly multiple-drop shipments to New York City from Delmarva.
RANGE: U.S. Grade A 44-47; 1,340 boxes; Branded U.S. Grade A 47-47½; 9,646 boxes.
WTD. AVG.: U.S. Grade A 45.70; Branded U.S. Grade A 47.06.

Eastern Pa. & N.J. Poultry

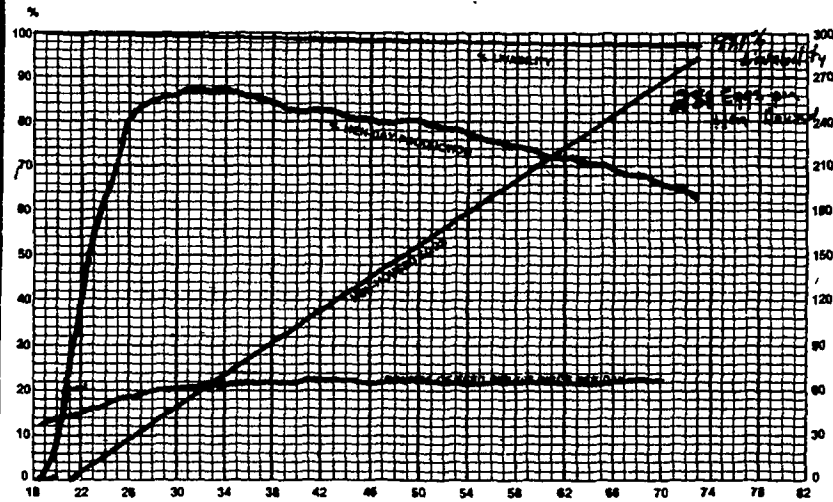
Wednesday, Dec. 15
Report supplied by USDA
Light-Type Hens: 8-9, prices paid at farm.
F.O.B. plant: 10-11, mostly 10.
Heavy Type Hens: TFTR.

Frederick Co. Hay

Thursday, Dec. 16
Report supplied by auction
21 loads.
Alfalfa 98.00-160.00; Timothy 109.00-115.00; Timothy stems 60.00; Timothy mixed 91.00-97.50; Round bales 30.00; Straw 60.00-74.00; Locust posts 2.70 each; Oats 2.95-3.20 per bushel. Note: The auction will be open for business next week.



THE DEKALB DK A PROVEN ALTERNATIVE



It can be done. Prove it to yourself. Here's an actual Lancaster Co. record with the following 60 week summary:

- 221.7 eggs per hen housed
- 98% livability
- 3.15 lbs. of feed per dozen eggs
- 20.27 lbs. of feed per 100 hens housed per day
- 75.9% average hen day production

CONTACT:

Moyer's CHICKS, INC.

DEKALB
BROWN & WHITE
EGG LAYERS

Quakertown, PA 18951
(215) 536-3155

HUBBARD
WHITE MT.
BROILERS

Copyright 1982 by Lancaster Farming
P.O. Box 366 - Lititz, PA 17543
Office: 22 E. Main St., Lititz, PA 17543
Record-Express Office Building
Phone: Lancaster 717-394-3047
or Lititz 717-626-1164

Robert G. Campbell, Publisher
Sheila M. Miller, Editor
Dick Anglestein, Staff Writer
Debra L. Koontz, Home Editor
Donna M. Tommelleo, Staff Writer

CORRESPONDENTS

Patty Gross, Bedford, Blair, Huntingdon counties
Martinsburg 814-793-4256
Jane Bresee, Bradford County
Ulster 717-358-3346
Beth Hemminger, Cumberland County, Franklin
and Perry counties
Newville 717-486-5322
Sally B. Bair, Lancaster County
Columbia
Joyce Bupp, York County
Seven Valleys

Subscription Price.
\$7.50 per year, \$13.00 - 2 years
\$14.00 per year outside of
PA, NJ, MD, DE, NY, VA & WV

Established November 4, 1955
Published every Saturday
by Lancaster Farming, Lititz, PA
Second Class Postage paid at
22 E. Main St.
Lititz, PA 17543 ISSN0023-7485

For address change form or new
subscription see Mailbox Markets.

Members of Newspaper Farm Editors Assn.,
Pa. Newspaper Publishers Association,
and National Newspaper Association.



ATTENTION FARMERS

EVERY MONDAY
HATFIELD PACKING CO. and
BAUMS MEAT PACKING
Will Receive Your
Hogs and Cattle at the

DANVILLE LIVESTOCK MARKET

RD4, Danville, PA

- We will receive your hogs from 8 AM to 12 Noon every Monday. Your hogs will be weighed and paid for immediately.
- We will also accept your sows & boars.
- Your cattle will be received from 12 Noon to 4 PM. We will either pay for your cattle immediately or you may sell them dressed weight.
- There will not be a commission or yardage fee deducted from your check.
- You may call our office Monday morning and we will be able to tell you the base price for hogs for the day.
- Please come and give us a chance to continue doing business with you through this method.

FOR INFORMATION CALL
717-275-2880