

FARM EQUIPMENT

FARM EQUIPMENT

FARM EQUIPMENT

FARM EQUIPMENT

FARM EQUIPMENT

FARM EQUIPMENT

FARM EQUIPMENT

KEENER EQUIPMENT INC.

1531 Manheim Pike
Lancaster, Penna. 17601 717-569-9861
Intersection of Route 72 & 283

USED FARM MACHINERY SPECIALS

END OF YEAR SAVINGS

John Deere 3010, 4010, M
Vermeer Round Baler, Gehl Grinder
Mixer
AC 180, D19, D17, D14
IH 1468, 2606, 656, 1466, 966, 450,
A, C

Manure Spreaders, Transport discs
Post Driver, 6 Row IH #500 Air Corn
Planter with monitor, Long 55"
tiller, Cultimulchers, Field
Cultivators, Snow Blades, Wood
Saws, Scraper Boxes, Pulverizers,
Chisel Plows, Wagons.

Crawlers - Case 310 diesel, John Deere
440, AC 655 with Ripper and bucket
Leader Tractors - JD 440, Ford 3550,
Nuffield, Ferguson 40

Ph. 717-569-9861



WISCONSIN ENGINES

SALES & SERVICE



ADAPTABLE
TO MOST
APPLICATIONS

**SALES & SERVICE
MILLER'S REPAIR**

1 Mile North of Bird-in-Hand
8 Miles East of Lancaster
RD 1, Bird-in-Hand, PA Ph: 717-656-6109

RINGTOWN FARM EQUIPMENT

NEW EQUIPMENT

- 5088
- 3288 w/air
- 584 RC
- 284D
- 244 FWD
- 1420 combine
- 370 disc
- 401 harrow 12'
- 720 plow 4 btm.
- 2250 loader
- 45 vibre shank
- 4500 vibre shank
- 41 cultimulchers
Dunham Lehr
- 40 cultimulchers
Dunham Lehr
- 40 cultimulchers
Dunham Lehr
- 1302 Holland trans-
planter
- Gyrostar, tedder and
rake
- M-5 Woods mower
- Woods scraper blades
- Hesston 245

USED EQUIPMENT

- NH 479 mower cond.
- Farmall 656D
- 2 Super C's
- IH 574
- Super AV
- IH potato planter
- IH 455 corn planter
- 45 vibre shank
- Haines bulk bodies
- Mayrath auger 6"x27"
- 1500 Schwartz loader
- Meyers 400 gal. spray
- Troyer elevator
- 100" Howard rototiller
- 800 Workmaster load-
er
- JD 2 row potato digger
- Lockwood 2 rw. potato
harvester
- Owatona self-propelled
windrower Model
25G, 10'
- Owatona self-propelled
windrower Model
30, 10', w/crimper
rolls

USED EQUIPMENT

- IH 3200A, Skid Steer
Loader

NEW EQUIPMENT

- SPERRY-NEW HOLLAND
- 488 mower cond.
- 519 spreader
- 442 disc mower
- 258 rake
- 256 rake
- 782 harvester

WINTER SPECIALS

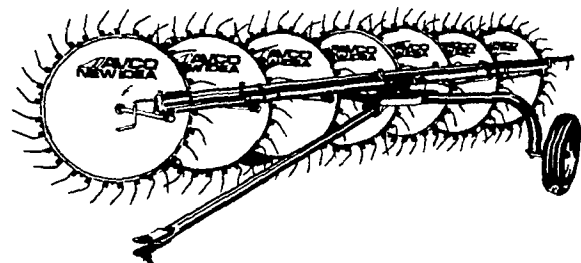
- Hydro 84 Row
Crop
- 720 5 btm. auto
reset plow 18"
- 770 deep till disk
13'9" \$6895
- L445 NH Loader

RD 1, Ringtown, PA
717-889-3184

Your Full Service Dealer

Winter Specials...

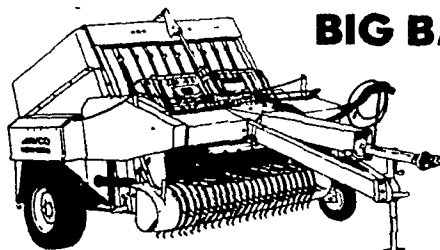
NEW IDEA MODEL 404 SPEED WHEEL RAKE



The 404 Wheel Rake is a high
quality rake at a reasonable price.
Rakes fast and clean in any field...
smooth, uneven, contoured or
hilly. Plus, it costs less to buy and
less to maintain.

Was
\$7,150

**TRUCKLOAD \$ 1050
SPECIAL**



BIG BALER SPECIAL

**BUY NOW AT
DISCOUNT
OR
RENT FOR \$5
PER BALE!**

**ZIMMERMAN'S
FARM SERVICE**
Bethel, PA
Phone 717-933-4114



STORAGE SHEDS



Built to order with all
wood construction

- Built on 4x4 pressure treated skids
- With 5/8" under layment plywood on floor
- T-111 exterior siding
- 2x4 joist 16" on center
- 2x3 rafters
- #240 shingles; choice of 6 colors
- 9 exterior colors
- awning windows
- free delivery to prepared site within
25 miles from shop - cost charged
thereafter
- Cottage type 20% more

Compare Our Prices!

6'x8' . . . \$340.00	10'x16' . . \$680.00
8'x8' . . . \$390.00	12'x14' . . \$755.00
8'x10' . . \$440.00	12'x16' . . \$825.00
8'x12' . . \$475.00	12'x20' . . \$940.00
8'x14' . . \$520.00	12'x24' . \$1075.00
10'x12' . . \$585.00	12'x28' . \$1205.00
10'x14' . . \$630.00	

Built & Manufactured by
Green Tree Structures

(Elam S. Zook)
RD #3 Box 351B
Quarryville, Pa. 17566
leave message at
717-786-4036
NO SUNDAY BUSINESS

TRIPLE H EQUIPMENT

Peach Bottom, Pa.
717-548-3775 or 717-548-2094



VERMEER EQUIPMENT

- 2-new 605H bale ~~SOLD~~
- 3-used 504F balers
- 1-used 605F baler
- 1-demo 504 Super G
- 2-new R23B twin rakes (Special)
- 1-8' heavy duty blade
- 1-7'6" disc mower-conditioner
- 2-F100 bale feeders and trailer
- 1-#340 irrigation traveler and dual hose reel

TRACTORS & SKID LOADERS

- 1-new Agri Power 9000, 113 hp, \$16,700
- 1-new Agri Power 4000, 48 hp, \$7000
- 1-new Lahman 30 hp, 2 buckets, \$10,000



VICON EQUIPMENT

- 2-8 wheel V rakes, new and used
- 2-6 wheel rakes, new and used
- 2-5 wheel rakes, new
- 1-2400 lb. spreader
- 3-1900 lb. spreaders
- 2-1400 lb. spreaders
- 2-1100 lb. spreaders
- 2-600 lb. spreaders
- 2-8' disc mower, new and demo
- 2-8' mower-cond., new and demo
- 1 ea.-10' and 15' power harrows
- 1-RP 1200 round baler, demo
- 1-RP 1500 round baler, demo

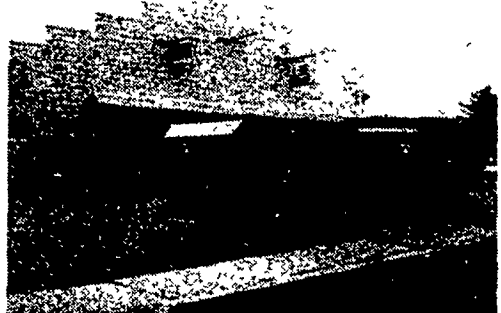
MISC. EQUIPMENT

- 2-Sunmaster 60" rotary mowers, new
- 2-36" log splitters
- 1-Woods 10' rotary mower, used
- 1-Hesston 10' hydro swing, used
- Zimmerman Wagons

**COME TO WHERE THE MIXERS
ARE IN STOCK
SEE THE NEW MODEL 115 Cu. Ft.**

Make every bite right.

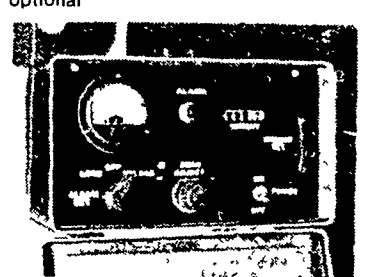
Combine
Ensilmixer®
feed mixer,
with scales,
and a
Jamesway®
TMR system.



You can increase production. Reduce feed costs. And improve labor efficiency. All, when you use an Ensilmixer feed mixer, with scales, by Oswalt® to round out your Jamesway Total Mixed Ration (TMR) feeding system (including silage distributor-unloaders, conveyors and cattle feeders) Or, use it with any mechanized feeding system. Whether you prefer the stationary, trailer-mounted or truck-mounted model, it's a real profit-building management tool.

Precisely weighs ingredients. Accurate weighing means consistent, balanced rations; eliminates waste. Lets you calculate the amount of feed needed and mix that much. Weigh bar system is standard, electronic scales optional.

Unique mixing pattern blends feed thoroughly. Three augers move feed from front to back and side to side. Reverse flighting at both ends lets feed fall freely for recirculation or discharge by the bottom auger. Uniformly mixes even partial loads.



That's why the Ensilmixer feed mixer, with scales, and TMR feeding system are right for you as well as your cattle. And, can help make farming just a little bit better. Ask your Jamesway Power Choring dealer.

**We Have Models In Stock - Available At:
DEPENDABLE MOTOR CO.**

East Main St., Honey Brook, PA
215-273-3131 — 273-3737



The performance leader... making the good life better