

## York Co. DHIA

(Continued from Page D18)

Cher	3	2 4	305	13,449	3 8	512
Crisie	3	2 9	305	17,198	3 8	653
Richard Staner						
Meknes	2	8 8	302	11,431	5 0	576
Eirhart	2	3 2	305	12,818	4 6	596
Chasity	2	5 4	305	13,749	3 9	539
Connie	2	4 3	305	11,882	4 2	500
Walnut Hill Farm						
Bambi	2	5 2	305	13,086	4 7	617
Linda	3	6 1	305	16,098	4 1	665
Fawn Meadow Holstein						
87	3	5 3	305	17,507	3 8	658
85	3	5 4	305	23,392	3 4	786
75	3	5 7	300	16,971	3 9	663
117	3	4 2	305	18,704	4 2	785
119	3	4 2	305	17,155	3 5	598
135	3	3 3	305	22,077	3 6	791
115	3	2 5	305	18,897	3 7	693
45	3	2 0	305	14,819	3 7	547
69	3	2 2	305	14,603	3 7	534
140	3	2 4	305	16,736	3 7	622
My-T Farms						
Pris	3	6 1	289	15,625	3 8	597
David Gemmill						
105	3	3 2	305	14,827	3 6	529
Double D Farm						
D80	3	6 2	289	12,614	4 6	581

D-89	3	7 3	276	14,752	4 1	602
D-93	3	9 3	280	19,022	4 1	776
D-104	3	8 1	305	15,995	3 6	569
Y-22	3	6 2	280	18,734	3 4	630
D-144	3	0 0	281	15,569	3 8	598
D-165	3	1 11	293	16,259	3 6	590
D-164	3	1 11	305	13,164	3 9	511
Dale Clymer						
Andrea	3	6 4	305	14,898	4 0	596
Grace	3	5 7	305	15,960	3 2	507
Amy	3	4 8	305	16,347	3 9	645
Deal Holsteins Farm						
52	3	5 2	305	14,454	3 6	524
96	3	3 4	305	12,787	4 0	517
98	3	3 5	292	16,312	3 9	634
154	3	6 2	277	13,966	3 7	512
177	3	6 2	275	14,472	4 3	621
191	3	6 3	305	14,399	3 5	511
121	3	2 9	305	13,712	3 6	500
Barrens View Fm						
Dee	3	7 10	292	13,155	4 0	522
Heidi	3	8 5	265	14,585	3 6	530
Jenny	3	5 1	305	18,364	3 3	602
Kathy	3	3 10	242	12,864	4 0	509
Cool Branch Farm						
Harriet	3	6 1	305	17,129	4 1	706
Raven	3	3 1	305	15,711	3 8	602
Spook	3	7 1	305	14,021	3 6	500
Molly	3	4 5	305	15,194	3 7	558
Susie	3	3 2	305	18,897	4 0	748
Whitie	3	5 3	305	18,458	4 2	768
Joanne	3	4 7	304	16,219	4 0	656

John P Bortner						
28	3	0 0	305	18,676	3 8	703
Juliann	3	6 3	278	13,034	4 2	542
Jim McCaffree						
Lottie	3	4 4	303	23,169	3 7	850
Lass	3	4 8	305	26,748	3 3	893
Kate	3	5 3	305	28,093	3 6	1007
Brite	3	4 3	305	19,581	4 3	838
Kelly	3	4 7	305	22,277	2 9	650
Glory	3	3 8	305	23,917	3 6	864
Faith	3	3 2	305	24,202	3 5	846
Belle	3	4 1	304	21,947	3 2	701
Nippy	3	2 2	305	19,440	3 3	648
William Myers						
Bonny	3	6 9	305	23,055	4 2	960
Jackie	3	6 4	305	23,733	3 4	799
Peggy	3	5 7	302	21,454	4 0	868
Fanny	3	4 5	305	22,647	4 6	1052
Belle	3	3 10	305	19,539	3 7	729
Edna	3	3 1	305	21,645	3 2	695
Tina	3	1 11	305	16,583	3 8	634
Carol	3	2 4	305	17,477	3 9	676
Gay	3	2 2	305	16,717	3 7	623
David M. Emig						
30	3	7 1	305	14,573	4 0	578
11	3	5 1	305	17,882	3 8	688
17	3	4 11	305	15,532	3 8	595
25	3	5 1	305	12,851	4 2	535
60	3	2 11	305	18,018	4 1	741
62	3	2 8	305	14,715	3 8	566
McRai Dairy Farm						
347	3	8 2	290	19,787	3 2	640
445	3	5 4	305	25,433	3 1	790

(Turn to Page D21)

### Boosting yields

LANCASTER — The control of weeds is vital to the success of no-till farming. Controlling these weeds may boost yields, such as wheat, up to 10 to 15 bushels an acre in areas with an average rainfall of 18 to 22 inches.



**Old Guard**  
Mutual Insurance Company

Lancaster, PA 717-569-5361

"Friend of Farmers since 1896."

How recently have you evaluated your buildings, machinery and livestock? Our agent in your area can help you and will gladly propose proper insurance coverage for all your fire and casualty needs.

#### MILLER INSURANCE AGENCY

Cor. Long Lane & Rt. 272, Willow Street, PA

#### THE C.J. HARTMAN AGENCY

R.D. #2, Dillsburg, PA

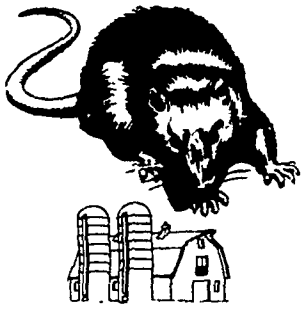
#### GARLIGHT INSURANCE MGT. CORP.

701 N. Eleventh Ave., Lebanon, PA

#### ROBERT T. HOSSLER

R.D. #1, Manheim, PA

ATTENTION FARMERS...  
FREE ESTIMATES ON RODENT CONTROL



RODENTS carry diseases which can endanger the health of your dairy herds. Your business is raising them. Ours is protecting them.



Since 1928

Pest control is too important to trust to anyone else

Lancaster, PA  
397-3721

Lewistown, PA  
248-0983

State College, PA  
237-7607

**Feterl Rufeeder**  
versatile - economical - feeder

DON'T WASTE IT  
FEED IT !!!!



**Rufeeder** Designed for all types of roughage. It is ideal for silage, baled hay, cubed hay, ground hay, field green chopping and chaff. The new RUFEEDEER is 20 feet long, and on a free choice basis can handle approximately 70 head. • Feed capacity— 375 cubic feet. • Mounted on special low profile heavy-duty gear. Made of quality steel and plywood.



**Feterl**

Sale Price **\$1995.00** while they last, List Price \$2470.00

### REIFF'S FARM SERVICE

Shippensburg, Pa. 17257

For delivery call 717-532-8601

AVAILABLE NOW!

**ROTEC**



A VARIETY OF AGRI-TANKS FOR CHEMICAL STORAGE, TRANSPORT & APPLICATION:

- UNION CARBIDE'S NEW RESIN FOR THE AGRICULTURAL 80's
- CIBA-GEIGY U V STABILIZER
- ALL SHAPES & SIZES
- STRONG, ONE-PIECE CONSTRUCTION
- MADE TO LAST FOR YEARS & YEARS
- 1-YEAR LIMITED (BUT NOT VERY) WARRANTY

Call Today or Stop In and Let Us Solve Your Agri-Tank Needs —

Distributed in your area by

MARTIN'S AG SERVICE  
R.D. 1 - Gristmill Rd.  
New Holland, PA 17557

PH. 717-354-4996  
Dealer Inquiries Invited!



The Timp Twins are Tough.

Got Grain? Then get the trailers that are Timp tough... the Super Hopper or the level floor Super Grain Trailer. They're not only built to take it... they're also built to cut fuel costs. The Super Hopper and

"Hitch on to quality"

**TIMPTE**

the level floor Super Grain Trailers are lightweight and aerodynamically designed to reduce wind drag. When there's grain to be hauled, Timp does the haulin' best and pulls a lot easier than the rest.

BLUE BALL, PA



717-354-4971