

Livestock market and auction news

Chambersburg Livestock Chambersburg, Pa. Thursday, Dec. 2

Report supplied by PDA

CATTLE: 401. Sl. steers: one Prime at 61.75; low to average Choice No. 2-4, 1025-1300 lbs. 56.00-58.75; Good 52.50-56.25, couple to 57.35; Standard 47.25-52.00; few Utility 38.00-46.00. Sl. heifers: Choice 51.75-55.85; few Good 47.75-50.00; few Standard 43.50-45.00. Sl. cows: Utility & Commercial 37.50-41.10, few 43.25; Cutters 36.00-38.75; Canner & L. Cutter 32.50-36.00; Shells down to 29.00. Sl. bullocks: Couple Standard 46.75 & 47.00; few Utility 40.75-44.00. Sl. bulls: Yield Grade No. 1, 1190-1690 lbs. 46.35-55.00, couple down to 41.25.

FEEDER CATTLE: Steers, few Medium Frame No. 1, 375-975 lbs. 43.75-50.00.

CALVES: 616. Few Prime 111.00-113.00; Choice 78.00-103.00; few Good 70.00-80.00; few Standard & Good 100-120 lbs. 55.00-65.00; 70-100 lbs. 45.00-51.50; Utility 50-90 lbs. 40.00-45.00.

FARM CALVES: Hol. Bulls 85-130 lbs. 53.00-73.00, few to 80.00; Hol. Heifers 90-120 lbs. 50.00-72.00.

HOGS: 46. Few lots No. 1-3 230-250 lbs. 54.00-55.25; one lot No. 1-3 195 lbs. at 52.00; Sows US No. 1-3 350-600 lbs. 48.00-51.00. Few Boars 40.00-40.75.

FEEDER PIGS: 16. One lot US No. 1-3 15 lbs. at 21.00 per head; one lot 45 lbs. at 45.00 per head.

SHEEP: 22. Few Good & Choice 75-110 lbs. 43.00-48.00.

GOATS: 2.

Belknap Livestock Auction

Dayton, PA
Wednesday, Dec. 1

Report Supplied by PDA

CATTLE 90. Compared with last Wednesday's market, few Standard slaughter steers 43.25-45.50. Couple Choice slaughter heifers 48.00-49.50, few Standard 40.00-42.50. Utility & Commercial slaughter cows 37.00-41.25, couple 43.00 and 43.75, Cutters 35.00-38.00, Canner & Low Cutter 25.00-34.75, Shells down to 23.00. Few Yield Grade #1 1030-2105 lbs. slaughter bulls 43.00-50.00; few yield grade #2 875-1185 lbs. 37.25-42.00.

CALVES 105. Choice vealers 76.00-87.00, one 95.00, Good 66.00-80.00, Standard & Good 90-110 lbs. 46.00-50.00, 65-85 lbs. 36.00-48.00, Utility 40-70 lbs. 24.00-34.00. Farm calves, holstein bulls 95-135 lbs. 48.00-70.00.

HOGS 230. US No. 1-2 200-235 lbs. barrows & gilts 55.00-56.50, couple head 56.75, No. 1-3 200-245 lbs. 54.00-55.50, No. 2-3 200-280 lbs. 52.00-54.00, No. 1-3 190-195 lbs. US No. 1-3

270-660 lbs. sows 45.00-51.25, few No. 2-3 275-680 lbs. 42.00-43.25. Few Boars 35.00-38.00.

FEEDER PIGS 91. US No. 1-3 20-30 lbs. feeder pigs 11.00-26.00 per head, No. 1-3 35-50 lbs. 32.00-37.00, few No. 1-3 50-70 lbs. 33.00-40.00 per head.

SHEEP 1. One Slaughter ewe at 5.00.

Belleville Livestock Auction

Wednesday Dec. 1
Report Supplied PDA

CATTLE 142. Compared with last Wednesday's market, slaughter cows mostly steady to strong. Few Good slaughter steers 53.00-53.75, few Standard 43.60-47.10. One Good slaughter heifer at 46.75. Utility & Commercial slaughter cows 37.00-41.10, couple 41.75, Cutters 35.00-38.00, Canner & Low Cutter 32.50-35.00, Shells down to 30.00. One Yield Grade #1 1200 lbs. slaughter bull at 46.10. One lot

Medium Frame #1 425-675 lbs. feeder steers at 61.75, one lot Medium Frame #1 300 lbs. at 50.25.

CALVES 181. Few Choice vealers 83.00-93.00, Standard & Good 70-110 lbs. 42.00-50.00, few Utility 50-80 lbs. 24.00-37.00. Farm calves, holstein bulls 90-130 lbs. 50.00-77.00; few holstein heifers 100-120 lbs. 54.00-59.00.

HOGS 147. Barrows & gilts \$2.50 to \$3 lower. US No. 1-2 230-245 lbs. barrows & gilts 54.35-55.25, No. 1-3 200-265 lbs. 52.00-53.60. Few US No. 1-3 325-615 lbs. sows 47.50-50.00. Few Boars 42.50-48.00.

FEEDER PIGS 133. US No. 1-3 25-40 lbs. feeder pigs 25.00-43.50 per head, No. 1-3 50-65 lbs. 48.50-55.50, one lot No. 1-3 150 lbs. 68.00 per head.

SHEEP 29. Choice 85-100 lbs. wooled slaughter lambs 44.00-50.00, few Good 60-90 lbs. 33.00-43.00.

GOATS 11. 15.00-38.50 per head.
HOLSTEIN DAIRY COWS \$570-\$1170, couple 1300 per head.

BROCK BIN FEATURES YOU'LL WANT TO KNOW MORE ABOUT

When you see our special slide presentation, here are a few of the outstanding BROCK grain bin features you'll find out about:

1 Our exclusive Cam-Lock Door has patented, hand-operated latches — so you don't need wrenches or special tools to open the door "boards".

2 High strength boron Grade #8.2 bin seal bolts are used on all bins. You get choice of either black polypropylene-coated truss head design or traditional zinc and yellow di-chromate-coated bolts.

3 Because you want a nearly air-tight seal between body sheets, we use non-hardening rope-type caulk to protect your grain.

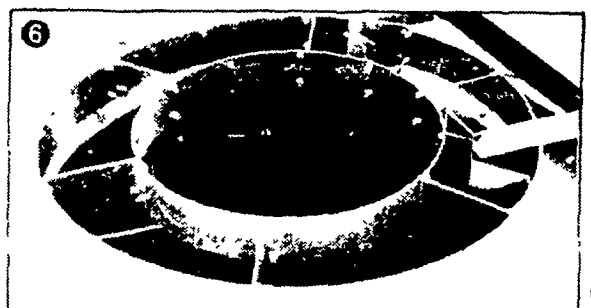
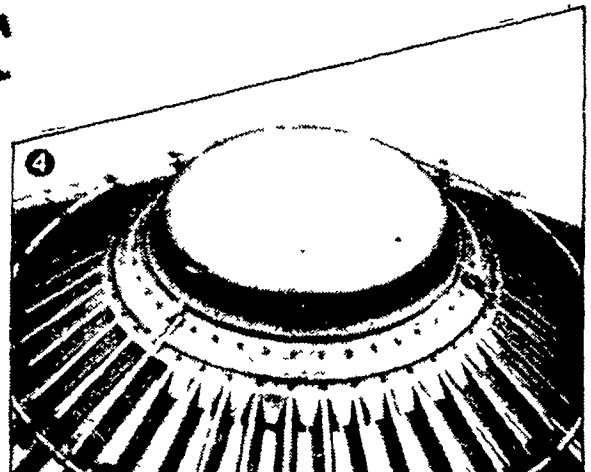
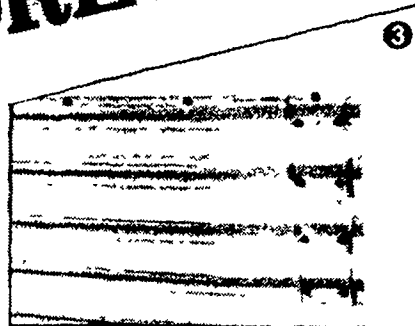
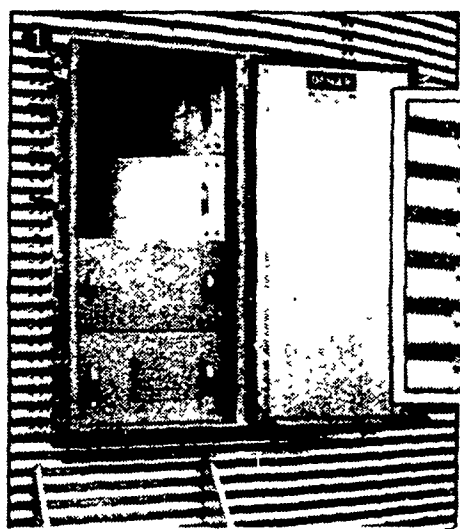
4 For grain protection, BROCK's fill hole lid is a one-piece, "spun" steel, fully galvanized, warp-resistant structure.

5 To make sure the lid stays put in any kind of weather, each comes with 3 positive-lock galvanized lid latches.

6 Giant fill hole (nearly 40 inches) permits greater air flow. Rigid 24-inch diameter center ring is strong enough to mount any accessory you're likely to use.

7 BROCK bins all come with complete walk rings for safety. And midway in the roof are stiffener rings (shown) to eliminate roof sag common in many other bins.

8 Standard on all BROCK bins — but not on any competitor's we know of — is a sturdy tubular handrail.



...and there are 42 other features and benefits we'll show you.
Arrange for your free slide showing and find out
WHY BROCK SHOULD BE YOUR BIN

**EARLY ORDER DISCOUNTS and ADDITIONAL DISCOUNT SPECIAL
On Brock Bins — Call Now**



H
**HERSHEY EQUIPMENT
COMPANY, INC.**

SYCAMORE IND. PARK
255 PLANE TREE DRIVE
LANCASTER, PA 17603
(717) 393-5807

Route 30 West at the
Centerville Exit.

Designers of Quality Systems for Poultry, Swine and Grain Handling.