

# Poultry Markets

## Nest Run Eggs

Prices are from Egg Clearinghouse, Inc., (ECI) Durham, N.H. and reflect trading prices for gradable nest run eggs (GNR) on ECI, a nationwide trading center for producers, packers and marketers. GNR eggs are classified by weight in 30-dozen cases, and traded in lots of either 300 or 750 cases. Prices are FOB buyers dock, and are computed Tuesday and Thursday of each week. This week's prices for each classification were:

Classification	Net Weight Per Case	Nov. 18	
		Tuesday	Thursday
Class 1 - Large	48 lbs.	53	52
Class 2 - Large	45 lbs.	48	48
Class 3 - Medium	42 lbs.	45	43½
Class 4 - Small	39 lbs.	39	37
Breaking Stock	48 lbs.	37	38
Checks	48 lbs.	32	31½

## N. E. Weekly Shell Egg Report

Tuesday, Nov. 16

Report supplied by USDA

Prices paid per dozen Grade "A" Brown eggs in cartons delivered to retail stores:

	Large		Medium	Small
	Ex. Large			
MASS.X	93-1.00	89-96	75-77	50-56
Mostly	96-98	92-94	75-76	54-56
N. HAMP.	86-93	82-89	70-77	44-50
Mostly	88-90	84-86	72-74	46-48
R.I.	87-94	83-90	71-78	44-51
Mostly	87-89	83-85	71-73	45-47
VERMONT	95-1.02	89-99	75-88	-
Mostly	96-98	90-92	80-82	-
MAINE	95-98	91-92	79-80	52-54

X Includes Central and Western Sections only.

## New York Multiple Drop Broiler Report

Thursday, Nov. 18

Report supplied by USDA

Current broiler/fryer negotiated prices for immediate delivery includes mostly multiple-drop shipments to New York City from Delmarva.

RANGE: U.S. Grade A 40-44; 1,175 boxes; Branded U.S. Grade A 43½-46; 7,320 boxes.

WTD. AVG.: U.S. Grade A 41.85; Branded U.S. Grade A 45.67.

## Delmarva Poultry

Thursday, Nov. 18

Report supplied by USDA

Today's LT.L. asking prices 1 cent-2 cents lower on U.S. Grade A at 41-45 cents.

Estimated slaughter of broiler fryers in Delmarva (000).

Estimated 11/18 1,168; Actual 11/11 1,616; Actual 11/16 1,670; Average Weights 11/16 4.26; 11/9 4.24.

## Heinsey's Poultry Market

Root's, East Petersburg  
Tuesday, Nov. 16

Report supplied by auction

MUSCOVY DUCKS, DRAKES: range .62-.86 per lb.

MUSCOVY DUCKS, HENS: range .50-.66 per lb.

PEKIN DUCKS: range .35-.46 per lb.

PULLETS: 6-8 lbs. range .38-.58 per lb.

RED FOWL: 4-5 lbs. range .12-.20 per lb.

RED FOWL: 5-6 lbs. range .15-.30 per lb.

CROSSBRED FOWL: 6-10 lbs. range .20-.32 per lb.

CROSSBRED ROOSTERS: 4-6 lbs. range .30-.62 per lb.

CROSSBRED ROOSTERS: 7-12 lbs. range .20-.58 per lb.

GUINEA FOWL: range 1.00-1.40 per lb.

BANTY ROOSTERS: range 1.00-2.25 ea.

BANTY HENS: range .35-1.00 ea.

LEGHORN ROOSTERS: range .20-.32 per lb.

LEGHORN HENS: range .06-.09 lb.

CAPON: 9-12 lb. range .62-.80 per lb.

GEESE: 7-9 lbs. range .30-.44 per lb.

GEESE: 10-15 lbs. range .62-1.02 per lb.

TURKEYS: 9-31 lbs. range .42-.56 per lb.

PIGEONS: range .90-1.20 ea.

WHITE PIGEONS: range 1.00-1.50 ea.

RABBITS: 4-6 lbs. range .70-1.04 per lb.

RABBITS: 7-11 lbs. range .40-.76 per lb.

GUINEA PIGS: range .25-.75 ea.

GOATS: range 15.00-47.00 ea.

KID GOATS: range 18.00-29.00 ea.

TOTAL AMOUNT COOPS: 1,018.

## Weekly New York Egg Market

From Friday, Nov. 12 to Nov. 18

	Fri.	Mon.	Tues.	Wed.	Thurs.
<b>WHITE</b>					
Jumbo	83	83	81	81	81
Ex Large	75	75	75	75	75
Large	71	71	71	71	71
Mediums	63	69	63	63	63
Pullets	49	49	49	49	49
<b>BROWN</b>					
Jumbo	-	-	-	-	-
Ex Large	94	94	94	94	94
Large	89	89	89	89	89
Mediums	69	69	69	69	69
Pullets					
Peewees	Unquoted				
<b>Off Grade</b>					
Large	63	61	61	61	61
Checks	30	30	29	28	28

Breaking Stock - Friday - Tuesday 10.80-11.00; Wednesday & Thursday 10.50-10.80.

Copyright 1982 by Urner-Barry

## Philadelphia Eggs

Thursday, Nov. 18

Report supplied by USDA

Prices to retailers: Sales to volume buyers, consumer grades white eggs in cartons delivered store door:

A Extra Large 69-75; A Large 68-70; A Medium 59-61.

## Eastern Pa. & N.J. Poultry

Wednesday, Nov. 17

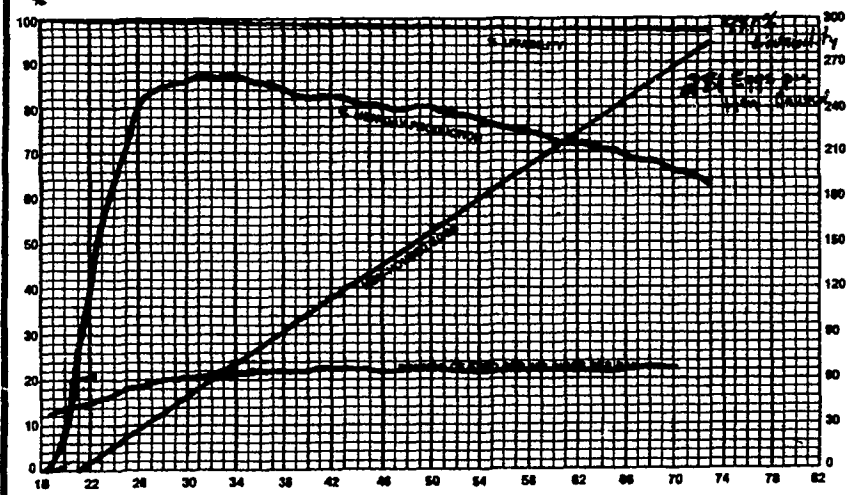
Report supplied by USDA

Light Type Hens: 11-12, prices paid at farm.

F.O.B. plant: 13-14, mostly 13½. Heavy Type Hens: TFTR.

# Give Eggs a Break

## THE DEKALB DK A PROVEN ALTERNATIVE



It can be done. Prove it to yourself. Here's an actual Lancaster Co. record with the following 60 week summary:

- 221.7 eggs per hen housed
- 98% livability
- 3.15 lbs. of feed per dozen eggs
- 20.27 lbs. of feed per 100 hens housed per day
- 75.9% average hen day production

**CONTACT:**

*Moyer's* CHICKS, INC.

**DEKALB**  
BROWN & WHITE  
EGG LAYERS

Quakertown, PA 18951  
(215) 536-3155

HUBBARD  
WHITE MT.  
BROILERS

Copyright 1982 by Lancaster Farming  
P.O. Box 366 - Lititz, PA 17543  
Office: 22 E. Main St., Lititz, PA 17543  
Record-Express Office Building  
Phone: Lancaster 717-394-3047  
or Lititz 717-626-1164

Robert G. Campbell, Publisher  
Sheila M. Miller, Editor  
Dick Angistein, Staff Writer  
Debra L. Koontz, Home Editor  
Donna M. Tommeleo, Staff Writer

### CORRESPONDENTS

Patty Gross, Bedford, Blair, Huntingdon counties  
Martinsburg 814-793-4256

Jane Breese, Bradford County  
Ulster 717-358-3346

Beth Hemminger, Cumberland County, Franklin  
and Perry counties  
Newville 717-486-5322

Sally B. Bair, Lancaster County  
Columbia

Joyce Bupp, York County  
Seven Valleys

Subscription Price:  
\$7.50 per year; \$13.00 - 2 years  
\$14.00 per year outside of  
PA, NJ, MD, DE, NY, VA & WV

Established November 4, 1955  
Published every Saturday  
by Lancaster Farming, Lititz, PA  
Second Class Postage paid at  
Lititz, PA 17543 USPS 304-040

For address change form or new  
subscription see Mailbox Markets.

Members of Newspaper Farm Editors Assn.,  
Pa. Newspaper Publishers Association,  
and National Newspaper Association.



## ATTENTION FARMERS

**EVERY MONDAY**  
**HATFIELD PACKING CO. and**  
**BAUMS MEAT PACKING**  
Will Receive Your  
Hogs and Cattle at the  
**DANVILLE LIVESTOCK MARKET**  
RD4, Danville, PA

- We will receive your hogs from 8 AM to 12 Noon every Monday. Your hogs will be weighed and paid for immediately.
- We will also accept your sows & boars.
- Your cattle will be received from 12 Noon to 4 PM. We will either pay for your cattle immediately or you may sell them dressed weight.
- There will not be a commission or yardage fee deducted from your check.
- You may call our office Monday morning and we will be able to tell you the base price for hogs for the day.
- Please come and give us a chance to continue doing business with you through this method.

**FOR INFORMATION CALL**  
**717-275-2880**