

Livestock market

Indiana Livestock

Homer City, PA
Thurs., Nov. 18

Report supplied by PDA

CATTLE 310: SL Steers (few) 49.00-51.00. SL heifers: Good & Choice 49.00-53.00; Standard 43.00-46.00; Utility 38.00-42.00. SL cows Utility & Commercial 36.00-39.50, few to 42.00; YG 4&5 36.00-39.00; Cutters 33.25-36.50; Canner & L. Cutter 28.00-33.50; Shells down to 18.00. SL bulls: Yield Grade No. 1, 1000-1700 lbs. 44.00-48.00; Yield Grade No. 2, 950-1500 lbs. 41.00-44.50.

FEEDER CATTLE: Steers, Medium Frame No. 1, 300-700 lbs. 46.00-51.75. Heifers, Medium Frame No. 1, 300-650 lbs. 39.00-45.00.

CALVES 121: Few Choice 75.00-82.00; Good 62.00-75.00 Standard & Good 90-120 lbs. 45.00-53.00; 60-85 lbs. 38.00-45.50.

FARM CALVES: Hol. Bulls 90-125 lbs. 58.00-68.00.

HOGS: 85 Barrows & gilts US No. 210-250 lbs. 58.00-59.00 No. 1-3 200-280 lbs. 55.25-57.00; (few) No. 2-3 280-300 lbs. 51.75-54.00; US No. 1-3 350-600 lbs. 52.00-56.50, one 640 lbs. at 49.75. Boars 40.50-47.00.

FEEDER PIGS 16: US No. 1-3 20-35 lbs. 14.00-25.00 per head.

SHEEP 29: Woolled sl. lambs (few) Choice 85-95 lbs. 46.00-47.00; (few) Good 75-120 lbs. 40.00-46.75.

SL. SHEEP 15: 15.00-25.75.

New Holland Dairy

New Holland Sales Stables
Wednesday, Nov. 17

Report supplied by auction

Reported receipts of 83 cows, 130 heifers, and 5 bulls. Market lower.

Load of Wisconsin fresh cows 1350.00-1425.00; Load of Pa. fresh cows 910.00-1075.00; Load of Pa. fresh cows 970.00-1075.00, springers 985.00-1170.00; Load of Franklin Co. fresh cows 710.00-1320.00; Load of Pa. fresh cows 975.00-1450.00.

Locally consigned cows 420.00-1125.00; Springing heifers 690.00-1110.00; Open heifers 265.00-490.00; Bulls 390.00-830.00.

New Holland Hay

New Holland Sales Stables
Monday, Nov. 15

Report supplied by auction

148 loads.
Alfalfa 89.00-151.00; Timothy 89.00-140.00; Mixed 41.00-150.00; Straw 42.00-120.00; Corn 55.00-89.00.

Good's Hay

Leola, Pa.

Wednesday, Nov. 17

Report supplied by auction

98 loads.
Mixed 58.00-132.00; Alfalfa 111.00-172.50; Straw 50.00-97.00; New Corn 63.00-64.00; Old Corn 61.00-90.00; Timothy 68.00-100.00; Corn Fodder 42.00-50.00; Clover 104.00; Oats 2.33 bu.

Lancaster Weekly

(Continued from Page A2)

lbs. 49.35-54.00, few 55.50-60.00, individual 61.75; Yield Grade 2 950-1400 lbs. 45.25-50.50.

VEAL CALVES: Vealers weak to 5.00 lower. Demand good for holstein bulls to return to farm.

VEALERS: Few Prime special fed 270-340 lbs. 100.00-121.00; high Good and low Choice 160-280 lbs. 70.00-90.00, 110-150 lbs. 60.00-75.00, 80-110 lbs. 43.00-55.00, 65-80 lbs. 35.00-43.00.

SLAUGHTER CALVES: Good and Choice 180-400 lbs. 37.00-52.00, few Choice 55.00-65.00.

RETURNED TO FARM: Few 100-115 lb. holstein heifers 100.00-116.00, several 90-105 lbs. 55.00-80.00; bulk 90-120 lb. holstein bulls 68.00-83.00, several 85-95 lbs. 53.00-65.00.

Weekly Summary

Harrisburg, PA
Fri., Nov. 19

Report supplied by PDA

CATTLE 7314: Compared 5817 head last week, and 5726 head a year ago. Compared with last week's market: Slaughter steers & bulls steady to 1.00 lower; SL heifers & SL cows .50-1.00 lower. SL steers: High Choice & Prime 61.00-63.25; Choice 56.50-62.00 Good 52.00-57.50; Standard 45.00-53.00. SL heifers Choice 52.00-58.00; Good 48.00-54.00; Standard 43.00-49.00. SL cows Utility & Commercial 36.00-41.50; Shells down to 18.00. SL bullocks few Choice 57.00-62.00; Good 51.00-57.00. SL bulls Yield Grade No. 1, 1200-2100 lbs. 46.00-54.00; Yield Grade No. 2, 900-1400 lbs. 40.00-48.00.

FEEDER CATTLE: Steers,

Medium & Large Frame No. 1 300-700 lbs. 45.00-60.00. Heifers, Medium & Large Frame No. 1, 300-600 lbs. 35.00-50.00. Bulls few Medium & Large Frame No. 1, 400-700 lbs. 45.00-57.00.

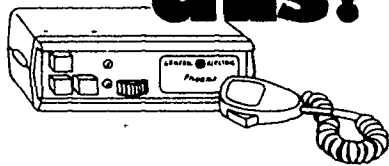
CALVES 4662: Compared with 4229 head last week and 4584 head a year ago. Vealers steady to 5.00 lower. Few Prime 100.00-110.00; Choice 75.00-104.00; Good 60.00-85.00 Standard & Good 90-110 lbs. 43.00-55.00; 70-90 lbs. 35.00-48.00; Utility 50-100 lbs. 20.00-40.00.

FARM CALVES: 90-130 lbs. 50.00-83.00; Hol. Heifers 90-140 lbs. 55.00-116.00.

HOGS 6337: Compared with 5085 head last week and 7885 head a year ago. Barrows and gilts steady to 2.00 higher, instances 3.00 higher, most advance latter part of

(Turn to Page A28)

Now hear this!

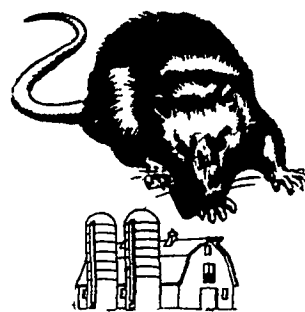


Let us show you how FM professional Two-Way Radio can pay for itself in reduced fuel, personnel and vehicle costs, and give you better control of your business to boot.

MOBILE RADIO

Authorized Sales & Service
TRIANGLE COMMUNICATIONS, INC.
RD 3, Rt. 23 West, New Holland, PA 17557
PH: 717-656-2211

ATTENTION FARMERS...
FREE ESTIMATES ON RODENT CONTROL



RODENTS carry diseases which can endanger the health of your dairy herds. Your business is raising them. Ours is protecting them.

Ehrlich

Since 1928
Pest control is too important to trust to anyone else

Lancaster, PA 397-3721
Lewistown, PA 248-0963
State College, PA 237-7607

ANDERSON FERTILIZER

Fall 1982 Fertilizer Price List

Select your fertilizer blend, schedule delivery by date shown above price column, lock in the confirmed price per ton with full payment by 11/27/82.

BLEND	Nov. 27 \$/ton	Dec. 4 \$/ton	Dec. 11 \$/ton	Dec. 18 \$/ton
10-20-20	167.00	168.00	169.00	170.00
12-24-24	186.00	187.00	188.00	189.00
12-12-12	145.00	146.00	147.00	148.00
16-16-16	171.00	172.00	173.00	174.00
19-19-19	191.00	192.00	193.00	194.00
20-10-10	168.00	169.00	170.00	171.00
28-13-13	202.00	203.00	204.00	205.00
8-32-16	185.50	186.50	187.50	188.50
10-30-10*	181.00	182.00	183.00	184.00
6-24-24	171.00	172.00	173.00	174.00
5-20-20	154.00	155.00	156.00	157.00
5-10-10*	119.00	120.00	121.00	122.00
0-26-26*	170.00	171.00	172.00	173.00
0-14-42	155.00	156.00	157.00	158.00

* May require 5 ton minimum order

BULK DISCOUNT - \$7.50 per ton

	Bag	Bulk
46-0-0	208.00	196.00
0-46-0	186.50	172.50
0-0-60	142.25	128.25
18-46-0	226.50	214.50
13-52-0	—	228.00

Delivery Rates, Field Seeds, Chemicals & Baler Twine Prices Available...

CALL TOLL FREE

No order too small if our truck is coming your way.

Custom Mixing Service Available

FERTILIZER SALES

Star Rt. Box 51
Latrobe, PA 15650

CALL TOLL FREE
800-442-6822
412-539-2689

ask for Frank
(answering service late
eves. & Sun.)

Prices subject to change without notice

We Trade Choppers



We Trade Choppers

THE BEST NOW EVEN BETTER

US Farm Systems bedding choppers are now available with controlled cutting length. We also have a recutter, if necessary, of those barns using grates over the gutters. This unit can give a consistent cut that will make every piece of bedding the length you desire. Available in gas engines, electric motors, or P.T.O. units. We also have special strawberry mulchers with 2 rotors that chop at a rate of 3 bales per minute.

Write US Farm Systems, 3053 Barren Rd., Oxford, PA 19363 or call (301) 398-2948.

US FARM SYSTEMS
of Pennsylvania
Your Manure and Feed Equipment Distributor