

Poultry Markets

Weekly New York Egg Market

	From Friday, Nov. 5 to Nov. 11				
	Fri.	Mon.	Tues.	Wed.	Thurs.
WHITE					
Jumbo	83	83	83	83	H
Ex Large	75	75	75	75	
Large	71	71	71	71	O
Mediums	63	69	63	63	L
Pullets	48	48	48	49	I
BROWN					
Jumbo	—	—	—	—	—
Ex Large	94	94	94	94	
Large	89	89	89	89	D
Mediums	69	69	69	69	
Pullets					
Peewees	Unquoted				
Off Grade					
Large	63	63	63	63	A
Checks	34	34	34	32	Y

Copyright 1982 by Urner-Barry

N. E. Weekly Shell Egg Report

Tuesday, Nov. 9
Report supplied by USDA
Prices paid per dozen Grade "A" Brown eggs in cartons delivered to retail stores:

	Ex. Large	Large	Medium	Small
MASS. X	93-1.00	89-96	75-77	50-56
Mostly	96-98	92-94	75-76	54-56
N. HAMP.	86-93	82-89	70-77	44-50
Mostly	88-90	84-86	72-74	46-48
R.I.	87-94	83-90	71-78	44-51
Mostly	87-91	83-89	71-75	44-48
VERMONT	95-1.02	89-99	75-88	—
Mostly	96-98	90-92	80-82	—
MAINE	95-96	91-92	79-80	52-54

X Includes Central and Western Sections only.

Nest Run Eggs

Prices are from Egg Clearinghouse, Inc., (ECI) Durham, N.H. and reflect trading prices for gradable nest run eggs (GNR) on ECI, a nationwide trading center for producers, packers and marketers. GNR eggs are classified by weight in 30-dozen cases, and traded in lots of either 300 or 750 cases. Prices are FOB buyers dock, and are computed Tuesday and Thursday of each week. This week's prices for each classification were:

Classification	Net Weight Per Case	Nov. 9		Nov. 11	
		Tuesday	Thursday	Tuesday	Thursday
Class 1 - Large	48 lbs.	53½	53½		
Class 2 - Large	45 lbs.	51	50		
Class 3 - Medium	42 lbs.	45	45		
Class 4 - Small	39 lbs.	38	38		
Breaking Stock	48 lbs.	41	41		
Checks	48 lbs.	38½	36½		

Heinsey's Poultry Market

Root's, East Petersburg
Tuesday, Nov. 9
Report supplied by auction
MUSCOVY DUCKS, DRAKES: range .70-.84 per lb.
MUSCOVY DUCKS, HENS: range .52-.72 per lb.
PEKIN DUCKS: range .35-.42 per lb.
PULLETS: 6-8 lbs. range .48-.50 per lb.
RED FOWL: 5-6 lbs. range .30-.32 per lb.
RED FOWL: 5-6 lbs. range .30-.38 per lb.
CROSSBRED FOWL: 6-9 lbs. range .30-.38 per lb.
CROSSBRED ROOSTERS: 4-6 lbs. range .25-.72 per lb.
CROSSBRED ROOSTERS: 7-11 lbs. range .30-.48 per lb.
GUINEA FOWL: range 1.22-1.50 per lb.
BANTY ROOSTERS: range 1.00-2.50 ea.
BANTY HENS: range .50-1.10 ea.
LEGHORN ROOSTERS: range .25-.36 per lb.
LEGHORN HENS: range .06-.11 lb.
GEESE: 8-17 lbs. range .22-.74 per lb.
TURKEYS: 12-22 lbs. range .42-.62 per lb.
PIGEONS: range .75-1.10 ea.
WHITE PIGEONS: range 1.00-1.50 ea.
RABBITS: 4-6 lbs. range .30-.78 per lb.
RABBITS: 7-11 lbs. range .42-.58 per lb.
GUINEA PIGS: range .25-.60 ea.
GOATS: range 24.00-50.00 ea.
KID GOATS: range 15.00-26.00 ea.
TOTAL AMOUNT COOPS: 932.

Philadelphia Eggs

Wednesday, Nov. 10
Report supplied by USDA
Prices to retailers: Sales to volume buyers, consumer grades white eggs in cartons delivered store door:
A Extra Large 69-75; A Large 68-70; A Medium 59-61.

Eastern Pa. & N.J. Poultry

Wednesday, Nov. 10
Report supplied by USDA
Light Type Hens: 11-12, prices paid at farm.
F.O.B. plant: 13-14, mostly 13½.
Heavy Type Hens: TFTR.

New York Multiple Drop Broiler Report

Thursday, Nov. 10
Report supplied by USDA
Current broiler/fryer negotiated prices for immediate delivery includes mostly multiple-drop shipments to New York City from Delmarva.
RANGE: U.S. Grade A 43-45; 1520 boxes; Branded U.S. Grade A 45½-46; 8,436 boxes.
WTD. AVG.: U.S. Grade A 44.08; Branded U.S. Grade A 45.93.

Delmarva Poultry

Wednesday, Nov. 4
Report supplied by USDA
Today's L.T.L. asking prices exchanged on lower on U.S. Grade A at 43-46 cents.
Estimated slaughter of broiler fryers in Delmarva (000).
Estimated 11/10 1,771; Actual 11/3 1,868; Actual 11/8 1,806; Average Weights 11/8 4.32; 11/1 4.33.

New Holland Horse

New Holland, Pa.
Monday, Nov. 8
Report supplied by auction
Reported receipts of 252 head of horses, mules, and ponies. Market: steady.
Local Better horses 450.00-1100.00; Driving horses 350.00-700.00; Riding horses 350.00-425.00; Lightweight killers 325.00-375.00; Heavyweight killers 425.00-500.00; Mare Ponies 35.00-90.00; Colts 15.00-35.00; Geldings 35.00-90.00; Larger ponies 110.00-150.00.

New Holland Hay

New Holland Sales Stables
Monday, Nov. 8
Report supplied by auction
Alfalfa 81.00-159.00; Timothy 81.00-140.00; Mixed 60.00-150.00; Straw 40.00-120.00; Corn 57.00-94.00.

Good's Hay

Leola, Pa.
Wednesday, Nov. 10
Report supplied by auction
Mixed 86.00-130.00; Old Corn 66.00-96.00; New Corn 64.00-69.00; Straw 79.00-89.00; Alfalfa 95.00-108.00; Corn Fodder 45.00-64.00; one Clover 94.00.



SADDLE UP!
To Better Equipment...
Find It In Lancaster Farming's CLASSIFIEDS!

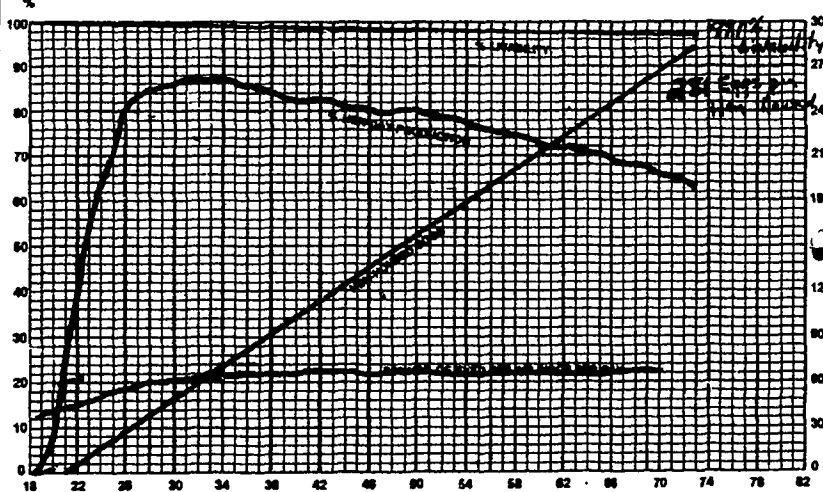


ATTENTION FARMERS

EVERY MONDAY
HATFIELD PACKING CO. and
BAUMS MEAT PACKING
Will Receive Your
Hogs and Cattle at the
DANVILLE LIVESTOCK MARKET
RD4, Danville, PA

- We will receive your hogs from 8 AM to 12 Noon every Monday. Your hogs will be weighed and paid for immediately.
 - We will also accept your sows & boars.
 - Your cattle will be received from 12 Noon to 4 PM. We will either pay for your cattle immediately or you may sell them dressed weight.
 - There will not be a commission or yardage fee deducted from your check.
 - You may call our office Monday morning and we will be able to tell you the base price for hogs for the day.
 - Please come and give us a chance to continue doing business with you through this method.
- FOR INFORMATION CALL
717-275-2880**

THE DEKALB DK A PROVEN ALTERNATIVE



It can be done. Prove it to yourself. Here's an actual Lancaster Co. record with the following 60 week summary:

- 221.7 eggs per hen housed
- 98% livability
- 3.15 lbs. of feed per dozen eggs
- 20.27 lbs. of feed per 100 hens housed per day
- 75.9% average hen day production

CONTACT:

Moyer's CHICKS, INC.

DEKALB
BROWN & WHITE
EGG LAYERS

Quakertown, PA 18951
(215) 536-3155

HUBBARD
WHITE MT.
BROILERS

Copyright 1982 by Lancaster Farming
P.O. Box 386 - Lititz, PA 17543
Office: 22 E. Main St., Lititz, PA 17543
Record-Express Office Building
Phone: Lancaster 717-394-3047
or Lititz 717-626-1164

Robert G. Campbell, Publisher
Sheila M. Miller, Editor
Dick Anglstein, Staff Writer
Debra L. Koontz, Home Editor
Donna M. Tommelleo, Staff Writer

CORRESPONDENTS

Patty Gross, Bedford, Blair, Huntingdon counties
Martinsburg 814-793-4256
Jane Bresee, Bradford County
Ulster 717-358-3346
Beth Hemminger, Cumberland County, Franklin
and Perry counties
Newville 717-486-5322
Sally B. Bair, Lancaster County
Columbia
Joyce Bupp, York County
Seven Valleys

Subscription Price:
\$7.50 per year; \$13.00 - 2 years
\$14.00 per year outside of:
PA, NJ, MD, DE, NY, VA & WV

Established November 4, 1955
Published every Saturday
by Lancaster Farming, Lititz, PA
Second Class Postage paid at
Lititz, PA 17543 USPS 304-040

For address change form or new
subscription see Mailbox Markets.

Members of Newspaper Farm Editors Assn.,
Pa. Newspaper Publishers Association,
and National Newspaper Association.